

# 9-201/301-0847 Evo 8/9 Fuel Pump Installation Guide

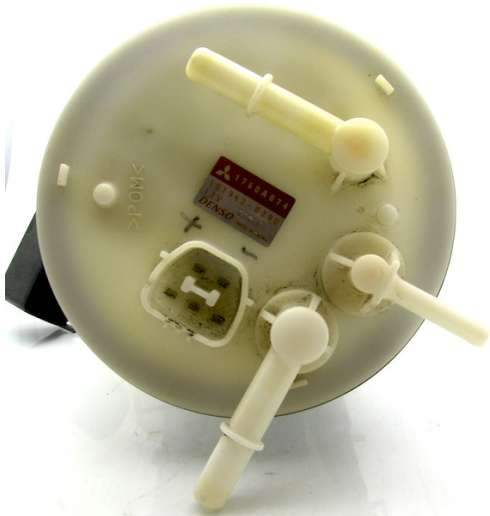


#### Parts List:

- DW200/300, 9-201/9-301
- Fuel Sock
- 3-100 O-Rings (x2)
- Fuel Sock Retainer Clip
- Super Lube

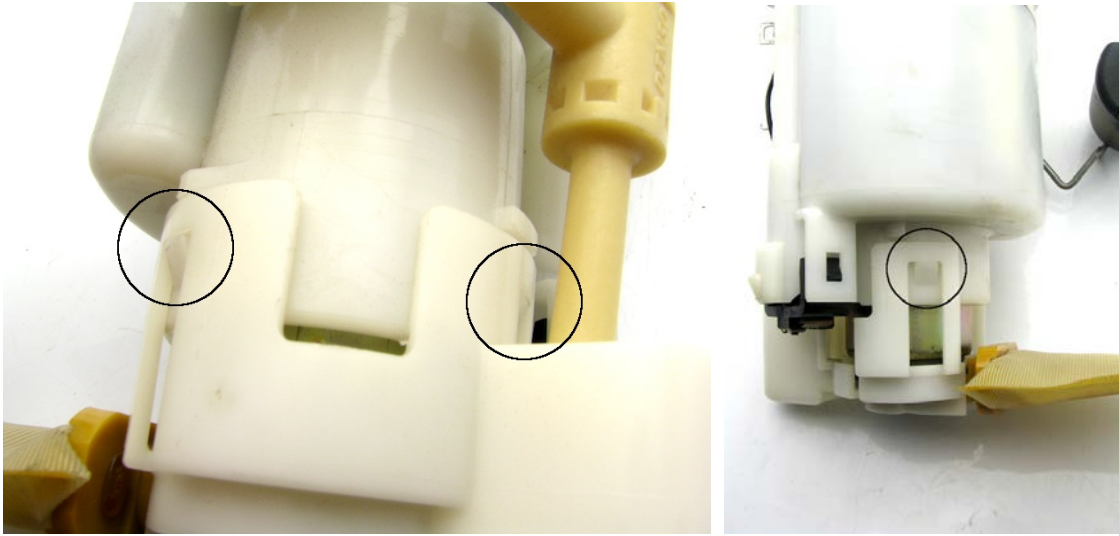
DeatschWerks  
Evo 8/9 Fuel Pump Installation Guide

Evo 8/9 Fuel Pump Install

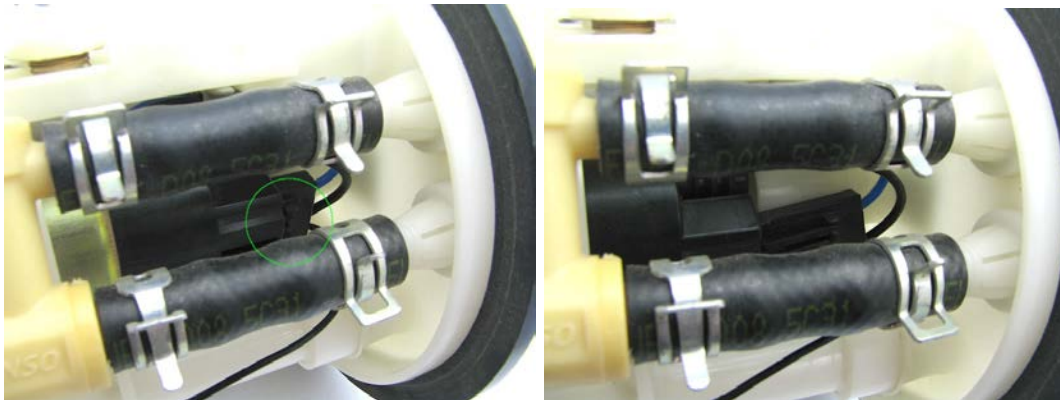


DeatschWerks  
Evo 8/9 Fuel Pump Installation Guide

1 – unclip the 3 tabs for the fuel pump retaining cap



2 – unplug the stock fuel pump using a flat-head screw driver by pressing the tab in and twisting

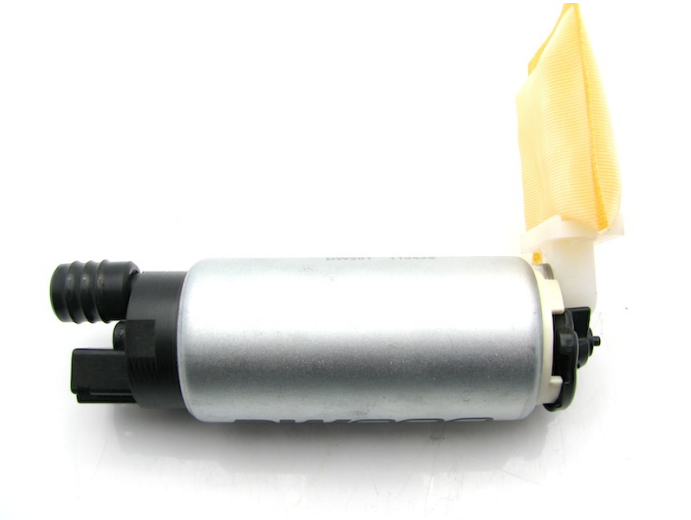


DeatschWerks  
**Evo 8/9 Fuel Pump Installation Guide**

3 – pull the stock fuel pump out of the assembly and remove these parts, they will be installed on the DW200/300



4 – prep DW200/300



DeatschWerks  
**Evo 8/9 Fuel Pump Installation Guide**

4a – if the OE grommet for the pump outlet is not in useable condition, the o-rings supplied in kit 9-0847 may be used

5 – install DW200/300 into the pump assembly while connecting the electrical connector and snapping the pump retainer in place



6 – after the assembly is installed into the fuel tank, connect the electrical connector to the assembly

7 – install a length of hose to the outlet of the pump assembly allowing it to drain into a fuel safe container

8 – crank the engine for a period of time long enough to prime the pump assembly and evacuate the air introduced during the pump installation process

9 – attach supply line to the outlet of the pump assembly