



*Truck and Jeep Accessories*

**KC09101BK  
FRONT 2" COIL SPRING SPACER KIT  
1994 - 2001 DODGE RAM 4WD 1500  
2005 - 2012 RAM MEGA CAB 4WD 1500**



# Introduction



is your number one source for Made In The USA quality, Comfort Ride™ leveling kits. Now backed with our exclusive *Go Everywhere* © Lifetime Limited Warranty. To assure your safety and proper installation of this product, take a moment to read all instructions and Product Safety Information before trying to install your Daystar® product. Current OEM suspension design is complex: meaning safe and proper installation requires understanding OEM service techniques for disassembly and assembly of the components indicated together with the instructions and warnings set out below and in the OEM service manual and your owner's manual. *Daystar® strongly recommends seeking advice from or having this product installed by a professional mechanic who can inspect your suspension, confirm compatibility with your tire and wheel choice and, if needed, reset alignment to optimize your steering and the features of your Daystar® Comfort Ride kit.* We are here to help if you have remaining technical questions after reading these instructions.

## **Product Safety Information**

Throughout these instructions important safety information is generally preceded by one of three signal words indicating the relative risk of injury. The signal words mean:

**! WARNING** A hazardous situation which, if not avoided, could result in death or serious injury. You can be Killed or Seriously Hurt if you don't follow instructions.

**! CAUTION** A hazardous situation which, if not avoided, could result in minor or moderate injury. You can be moderately HURT and also may suffer property damage if you don't follow instructions.

**NOTICE** Careful attention is required to this instruction or operation but does generally not relate to personal injury. Damage to your product or other property may result if you don't follow instructions.

### **!WARNING**

Familiarize yourself with all vehicle manufactures and Daystar warnings, instructions and limited warranties before driving your modified suspension vehicle. Also be aware many states / countries have laws governing on-road vehicle heights and modifications. You are responsible for assuring the safety and legality of your vehicle.

## Tools Needed

Quantity	Description
2	Frame Jack
1	Floor Jack
1	Metric tools
2	Wheel Chocks
1	1/2" Ratchet
1	1/2" Drive Sockets set
1	1/2" Short socket extension
1	1/2" Long socket extension
1	Spring compressor

## Part list Bill of Materials

Quantity	Part Number	Description
2	M02785	Coil Spring Spacers
1	BU3001	Hardware Kit
1	P10474	Warning Decal

**!Warning: Always work with appropriate personal safety gear including safety glasses, gloves and hearing protection if using air powered tools.**

Begin by inspecting the components & hardware for damage. Then compare components & hardware to the bill of materials for completeness.

**!Caution: Vehicle front end must be raised to install leveling kit. Using a hydraulic chassis lift will greatly ease installation. If another jack is used, assure vehicle is level on a firm surface, in park (1st gear), rear wheels blocked and jack stands in place to support vehicle in case jack or vehicle shifts.**

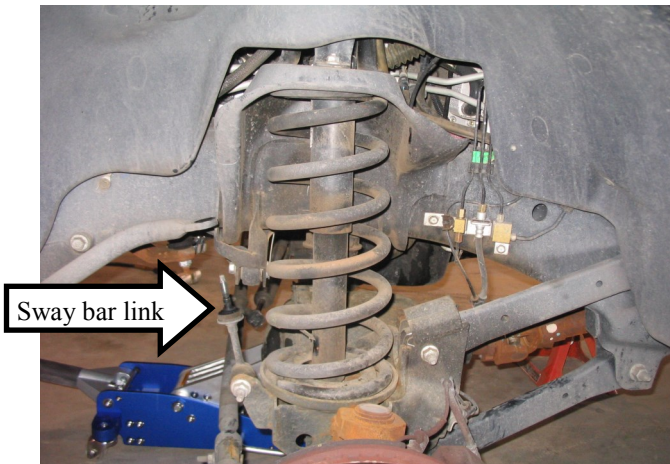


## Installation Instructions

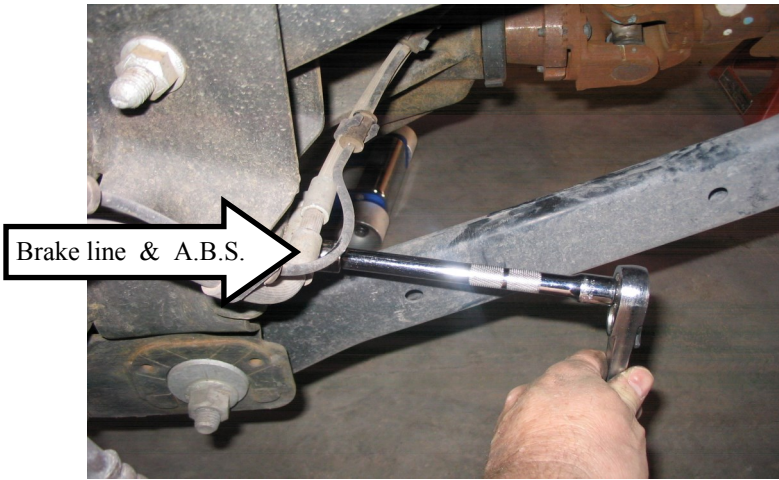
1. Place the vehicle in Park and set the parking brake. Block the rear tires.
2. Raise the front of the vehicle and place jack stands under the frame allowing the front suspension to be lowered. Leave a jack under the axle.
3. Remove the front wheels.



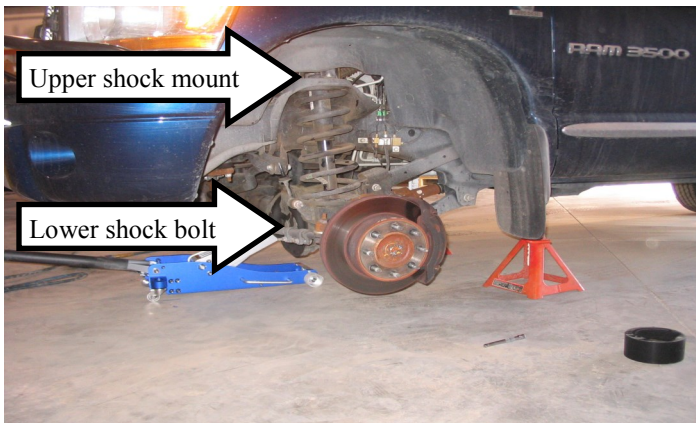
4. Disconnect the upper sway bar link mount at the axle.
5. Push the sway bar up and out of the way.



6. Disconnect the A.B.S. ( Antilock Brake System) brake line bracket from the axel housing.

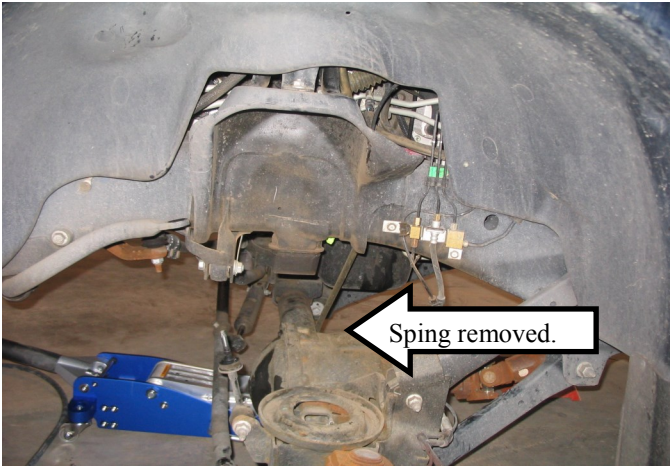


7. Jack up the axle so the coil is compressed . **NOTICE:** do not Raise vehicle off of the jack stands,
8. Disconnect the upper shock mount.
9. Disconnect the lower shock mount nut and bolt.
10. You may have to disconnect the track bar on the axle side to get To lower shock bolt.



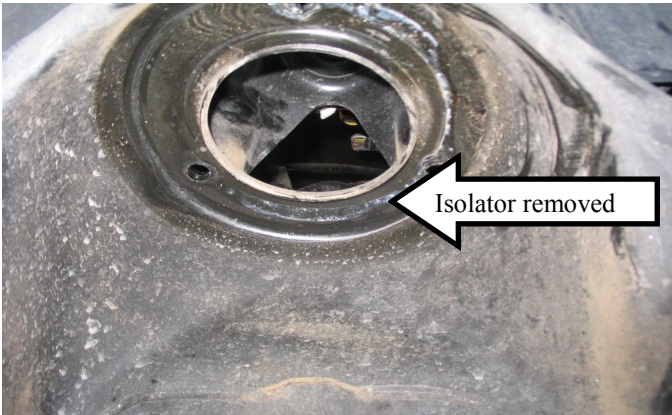
11. Lower down the axle so the coil springs will drop out.
12. Don't mix up the left and right side coils; they are side-

**!CAUTION: Coil spring maybe compressed even with axle/ suspension at full travel. Use spring compressor for safety during removal. Keeping hands and other body parts clear at**

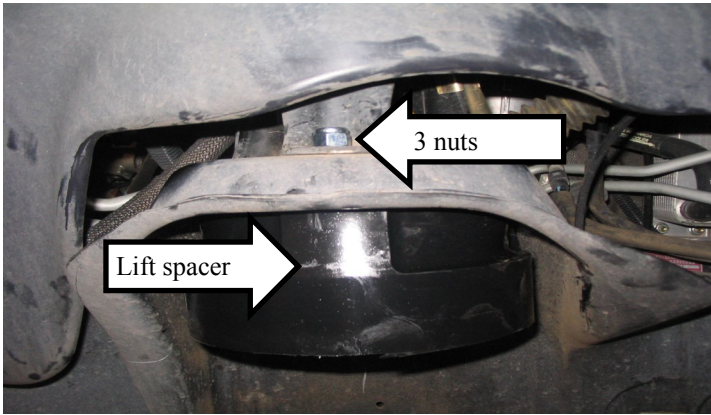


13. Remove the upper spring isolators

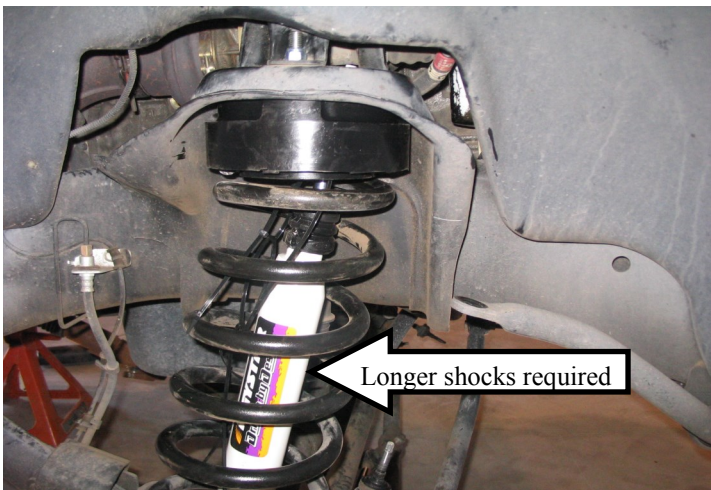
**Photo of inside of front spring pocket with isolator removed**



14. Install the Daystar lift spacers into the stock isolator mounting position and install the mounting nuts. ( 3 per side ). Torque to factory specs.

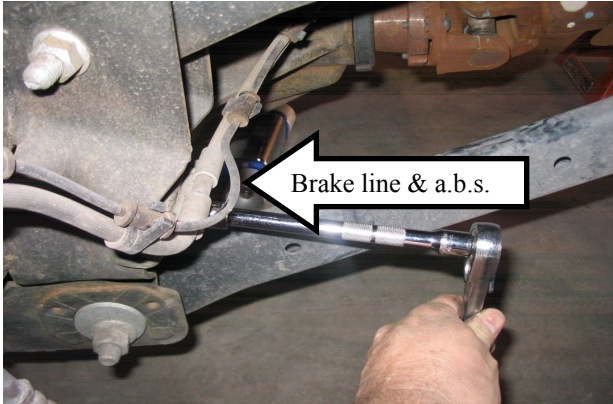


15. Position coil spring and shock absorbers in the upper spring mounts and shock mounts. **NOTE:** You will need longer shocks.
16. Install the upper shock mount fist.
17. Place the coil in the lower axel spring mount and jack up the axel to install the lower shock bolts and nuts.
18. Lower the jack down to full drop. **NOTE** the shock should





19. Jack up the axle and reconnect the sway bar end link.
20. Re-attach the ABS (Anti Lock Brake System) cable and  
and brake



**NOICE:** Then double check the installation.

21. Reinstall driver and passenger tires and wheels.
22. Remove jack stands and lower the truck back on the ground.  
Remove all jacks and jack stands from under vehicle.
23. Torque the lug nuts to 85 ft.lbs. using an X pattern.
24. Center the steering wheel.

**!CAUTION:** Have an alignment professional check and adjust the alignment to factory specifications.



25. With the vehicle on the ground cycle the steering wheel side to side and inspect suspension components, brake lines and tires to ensure there are not any clearance issues. Jounce the suspension to assure front suspension operates freely, brake lines retain proper slack at full extension and that they remain clear of springs or other obstructions.
26. Install **“Warning to Driver”** decal on the vehicle’s sun visor or dash. The decal must be placed in a conspicuous location. Anyone that operates the vehicle must be made aware of the changes made.
27. After 25 miles of driving re-torque the lug nuts to 85 ft.lbs..
28. After 500 miles of driving re-torque all of the hardware associated with the leveling spacer installation to factory