

Installation Instructions

PORSCHE® 964 Tail Lamp Glass



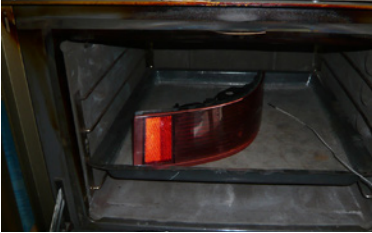
JP no. 1695350970
96463190710 (LEFT)



JP no. 1695350980
96463190810 (RIGHT)



1 Demount the glass from the tail lamp unit

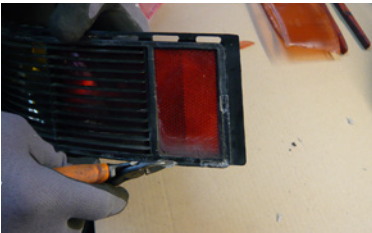


a. Heat up an electrical oven to 130-135°C (important to be max this temperature in order not to melt the part)



b. Place in the oven for a few minutes – max 5 min. During this short period try now and then to separate the glass from the housing with a screwdriver. After max 5 min. it will be possible to carefully separate the glass from the tail lamp unit.

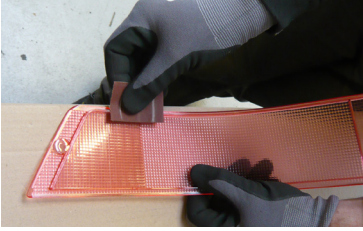
2 Clean prior to glueing



a. Remove the remaining old glue with a diagonal cutter and/or utility knife.



b. Use sandpaper to smoothen the surfaces around the edge on the housing where it has to be glued.



c. Use sandpaper to make a rough surface around the edge of the tail lamp glass.

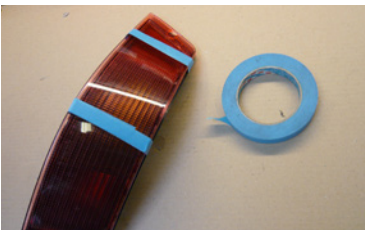


d. Apply glue along the edge on both the tail lamp glass and the tail lamp housing.

d2. We recommend using transparent sealer 2K MS Polymer



e. Carefully and precisely attach the glass to the housing.



f. Fasten the two units precisely to each other and lock it into this position by using tape around the assembled parts.

g. Leave the unit with the tape on until the sealer is cured.

h. Demount the tape and clean. Now you have a nice result.



Learn more about custom and factory tail lights we have.