



- Installation Manual -

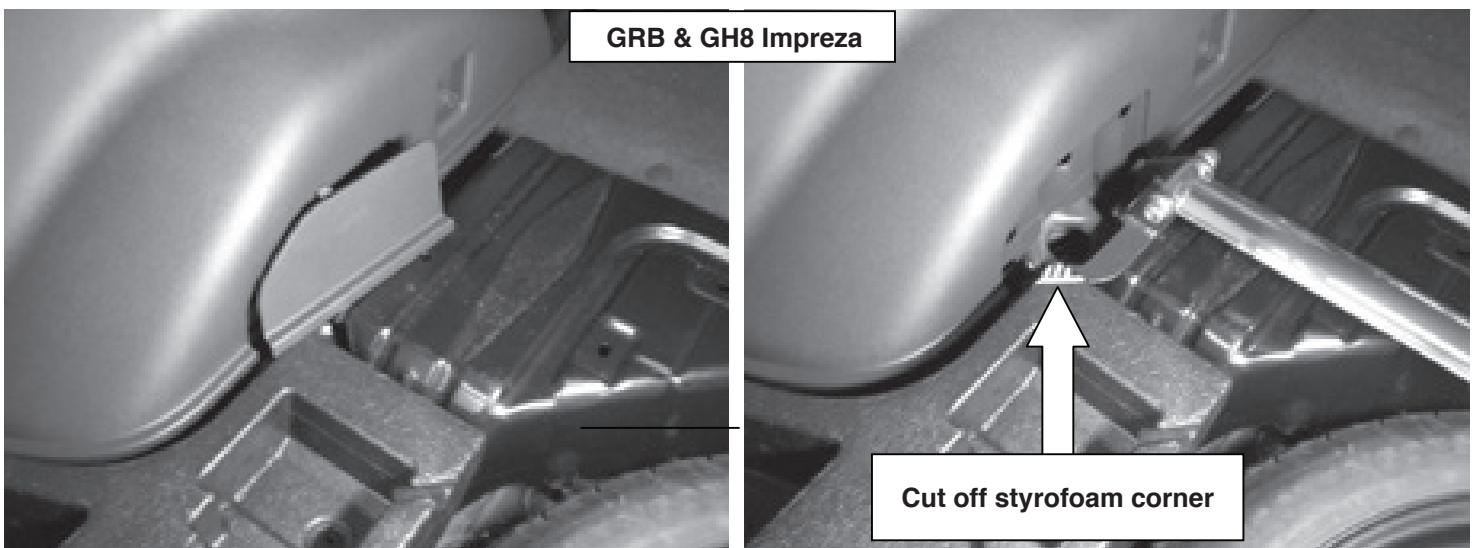
692 541 A
[Strut Tower Bar](#)

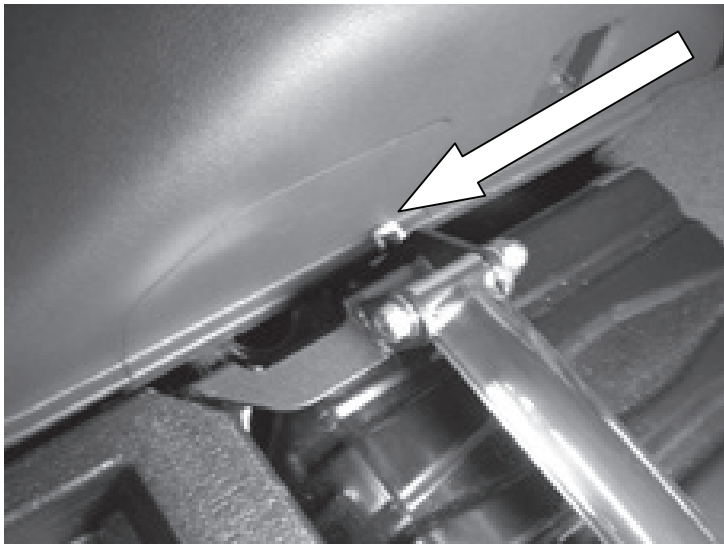
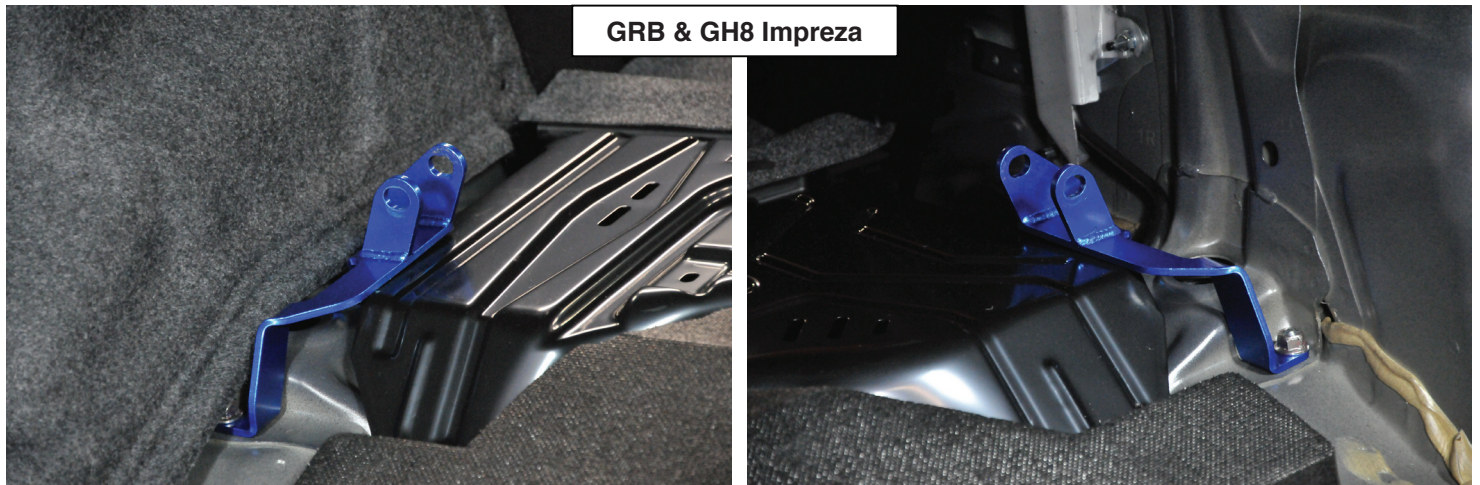
[Part Number]	692 541 A
[Application]	SUBARU IMPREZA STI [GRB, GVB] SUBARU IMPREZA [GH8] SUBARU FORESTER Turbo & NA [SH5] SUBARU LEGACY WAGON [BR9] SUBARU LEGACY [B4]
[Product]	Type-OS Strut Tower Bar
[Description]	Rear Type-OS Strut Tower Bar
[Contents]	Strut Tower Bar x1

Note: This product requires modification of the rear interior trunk panels. The modifications differs between the Legacy, Forester, and Impreza.

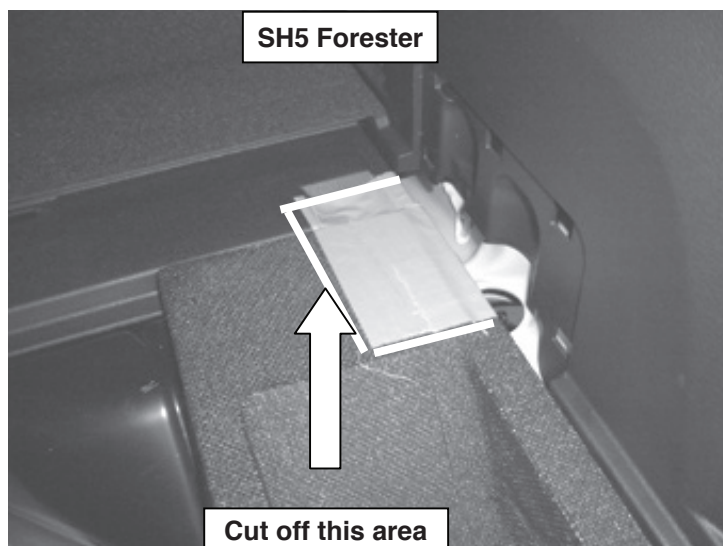
[Procedure for GRB, GVB, GH8, GE8 Impreza & SH5 Forester]

- 1.) Remove the interior trunk panel and side covers.
- 2.) Disassemble the end brackets from the strut bar assembly, and place on the strut tower location like below. hand-tighten the nuts to hold down the strut brackets. (Driver side pictured)

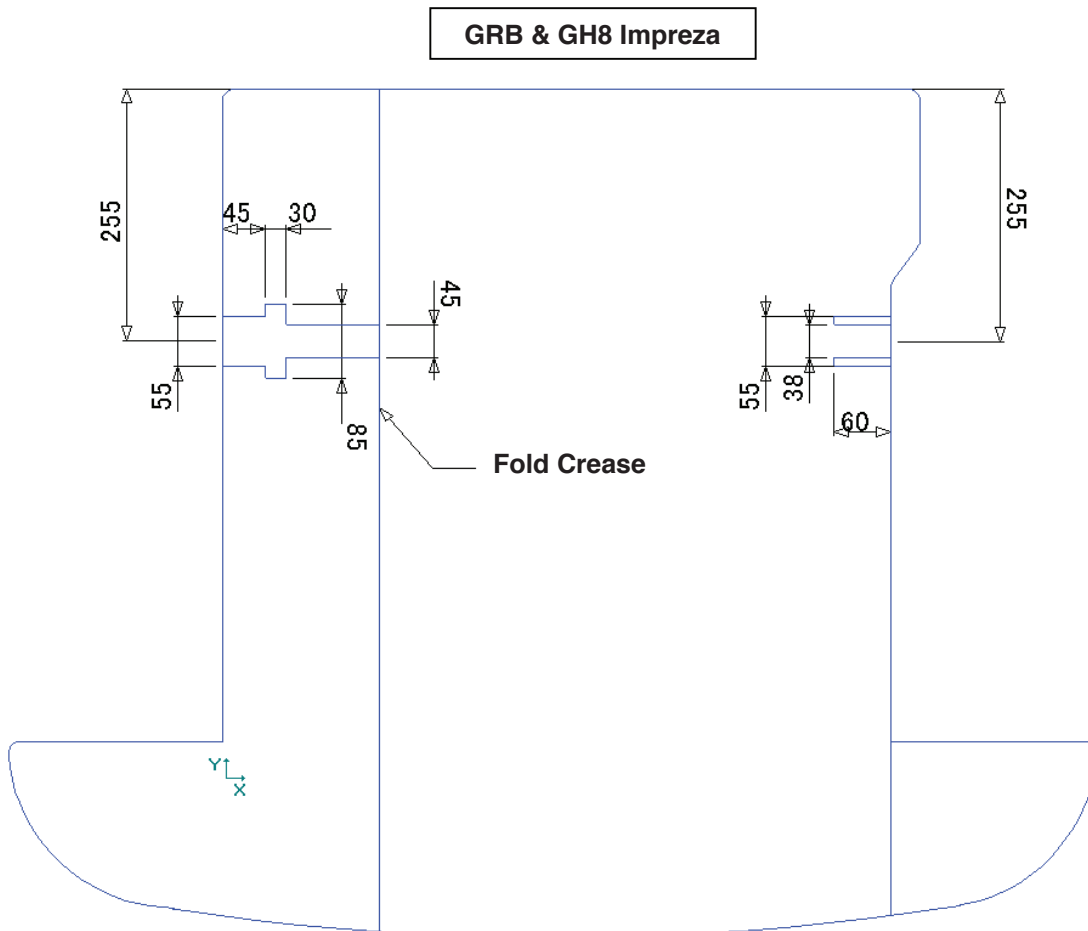




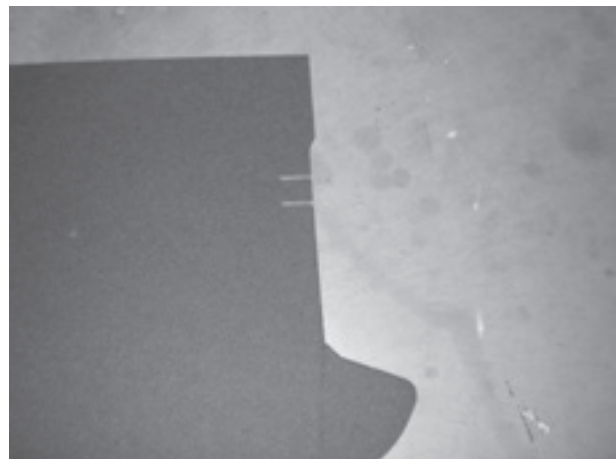
- 3.) Tighten the strut bolts according to the factory service manual torque specification.
- 4.) Put back side covers. (If applicable)



- 5.) The basic template for the trunk board is as follows. (specs displayed in millimeters)
*Every application is different so please cut the board according to your own specification. This template is for reference only.



Left



Right

**Periodically check and re-torque all nuts and bolts after operating vehicle.