

56148 NISSAN NV

WIRING LOCATION GUIDE



MUST READ FIRST!

All steps must be followed to ensure correct function of the T-Connector. To verify proper installation once installed, test by connecting a test light or properly wired trailer.

1. Open the rear cargo doors.

2. Starting on the driver side locate the vehicle's taillight wiring harness connector (B). The connector will be similar to those on the T-Connector harness and is located inside one of the access pockets inside the cargo area. Separate the connectors taking care not to damage the locking tabs. Insert the T-Connector end with the yellow wire between the separated connectors (C). Make sure the connectors are fully inserted with locking tabs in place.

WARNING!

Verify miscellaneous items that may be hidden behind or under any surface before drilling to avoid damage and/or personal injury.

4. Locate a suitable grounding point near the connector such as an existing screw with nut in the vehicle's frame or drill a 3/32" hole and secure white ground wire using ring terminal and screw provided.

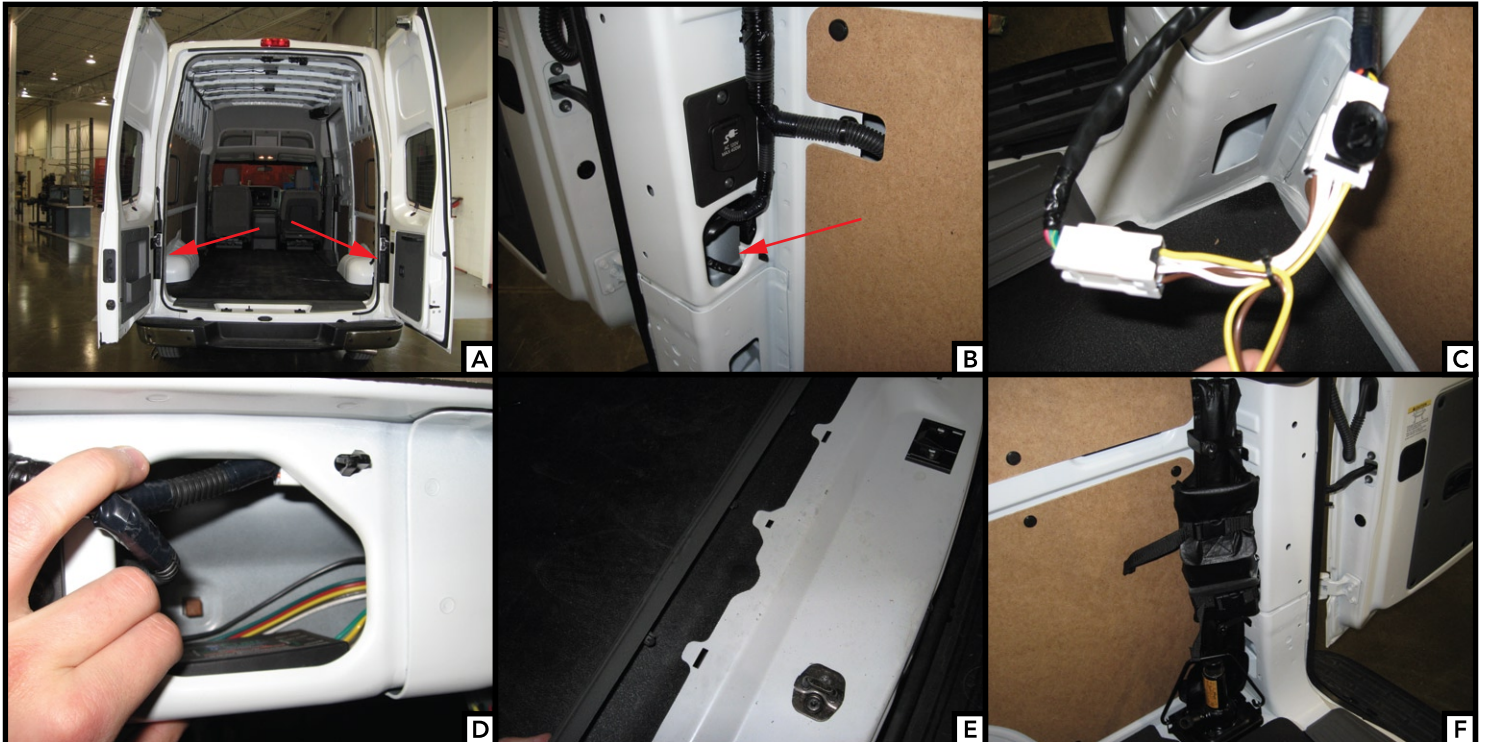
5. Review the CME-PCL-INS instruction sheet and route the black power wire from the battery to the converter as shown.

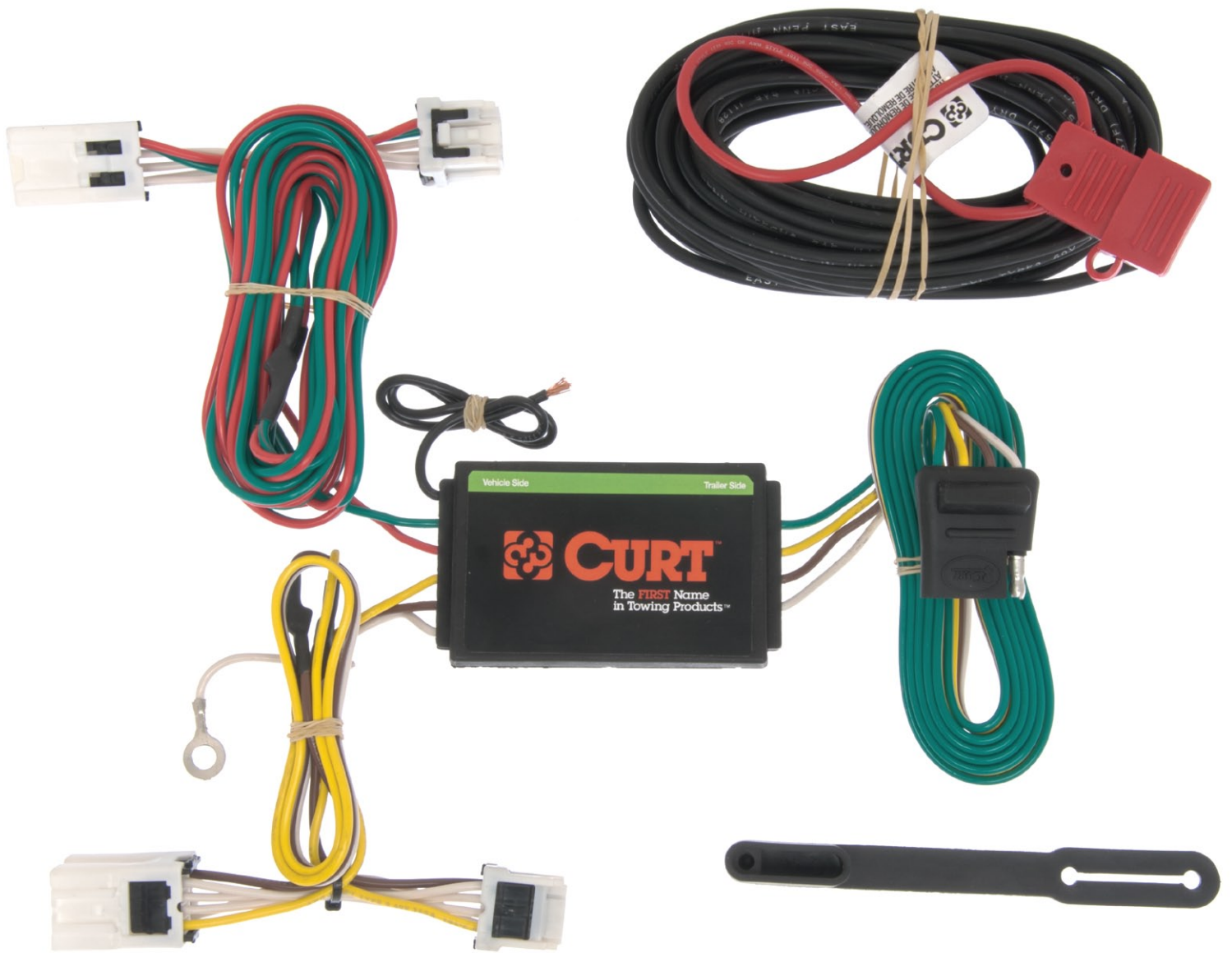
6. Adhere the black converter box inside the access hole near the connectors.

7. Remove the rear scuff panel (D) and route the T-Connector end with the red & green wire to the passenger side under the removed scuff panel. On the passenger side remove the jack for ease of installation. Repeat Step 2 on the passenger side using the T-Connector end with the red & green wire.

8. Route the 4-flat wire to the center of the vehicle and out of the cargo doors when in use. When not in use roll up and store on the driver side in an out of the way location.

9. Reinstall all items removed during install.





Looking for dependable trailer hitches and towing? Rely on CURT for quality and long-lasting products.