

56093

FORD TAURUS

FORD TAURUS SHO

WIRING LOCATION GUIDE



MUST READ FIRST!

All steps must be followed to ensure correct function of the T-Connector. To verify proper installation once installed, test by connecting a test light or properly wired trailer.

1. Open the trunk and remove the rear scuff panel by pulling up (A). On both sides of the vehicle remove plastic fasteners holding the felt trunk liner in place (B). Pull back on the trunk liner to locate the vehicles taillight wiring harness (C). The harness will have connectors similar to those on the T-Connector harness.

2. On the driver's side separate the connectors taking care not to damage the locking tabs (D). Insert the T-Connector end with the yellow wire between the separated connectors. Make sure the connectors are fully inserted with locking tabs in place.

WARNING!

Verify miscellaneous items that may be hidden behind or under any surface before drilling to avoid damage and/or personal injury.

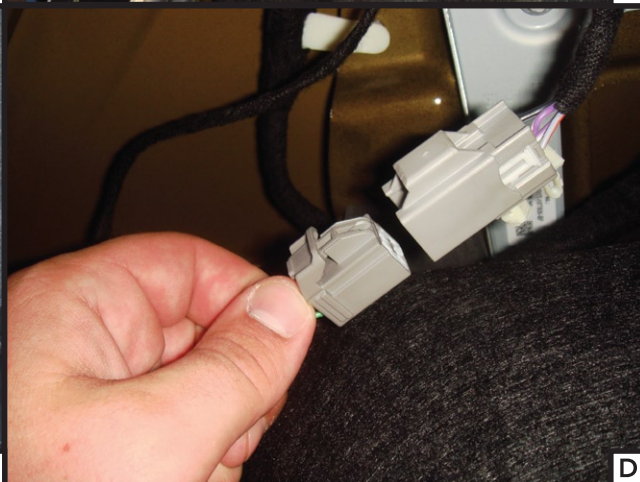
3. Locate a suitable grounding point near the connector such as an existing screw with nut in the vehicle's frame or drill a 3/32" hole and secure white wire using eyelet and screw provided.

4. Route the T-Connector end with the green wire along the removed scuff panel to the passenger side. Repeat Step 2 on the passenger side using the green wire.

5. Adhere the black converter box to the frame of the car using the double-sided tape provided. Secure any loose parts of the T-connector with the cable ties provided. Re-assemble anything removed during installation.

6. Route the black power wire from the battery as shown on the CME-PCL-INS sheet included. Route the black wire through any rubber grommet in the trunk area if applicable to the black converter.

7. Route the 4-flat wire to the center of the vehicle and out the trunk when in use. When not in use roll up and store in an out of the way location in the trunk.



56093 FORD EXPLORER

WIRING LOCATION GUIDE



MUST READ FIRST!

All steps must be followed to ensure correct function of the T-Connector. To verify proper installation once installed, test by connecting a test light or properly wired trailer.

1. Open the tailgate and fold the third row seats forward. Remove the rear scuff panel by pulling up (A). Remove the cargo mount covers (B). Remove the plastic fasteners securing the side panels (C). Pull on the side panels to access the vehicle's taillight wiring harness and connectors (D). The connectors will be similar to those on the T-Connector harness.

2. On the driver's side separate the connectors taking care not to damage the locking tabs. Insert the T-Connector end with the yellow wire between the separated connectors. Make sure the connectors are fully inserted with locking tabs in place (E).

WARNING!

Verify miscellaneous items that may be hidden behind or under any surface before drilling to avoid damage and/or personal injury.

3. Locate a suitable grounding point near the connector such as an existing screw with nut in the vehicle's frame or drill a 3/32" hole and secure white wire using eyelet and screw provided.

4. Route the T-Connector end with the green wire along the removed scuff panel to the passenger side. Repeat Step 2 on the passenger side using the green wire.

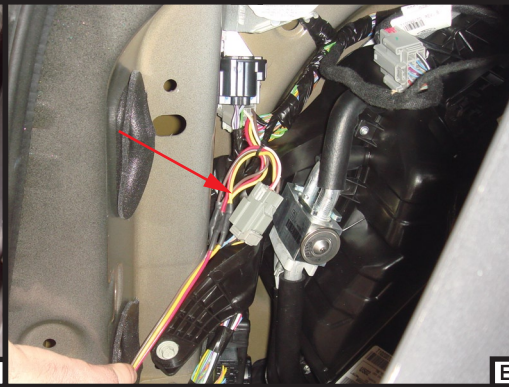
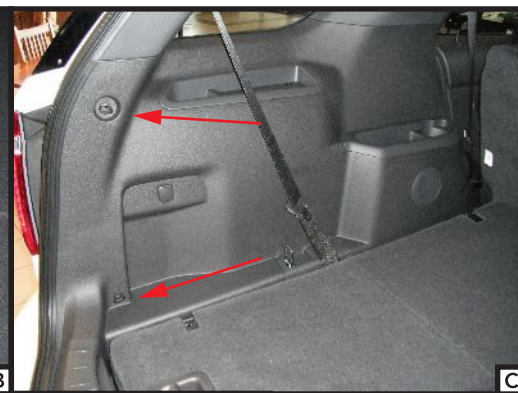
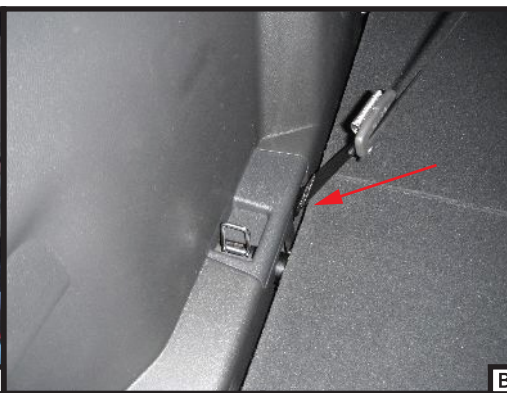
5. Adhere the black converter box to the vehicle's frame using the double-sided tape provided.

6. Route the black power wire from the battery as shown on the CME-PCL-INS sheet included.

7. Secure any loose parts of the T-Connector with the cable ties provided.

8. Reinstall all items removed during installation.

9. Route the 4-flat wire to the center of the vehicle and out the tailgate when in use. Store in an out of the way location in the trunk when not in use.





56093