

56008

ACURA RDX

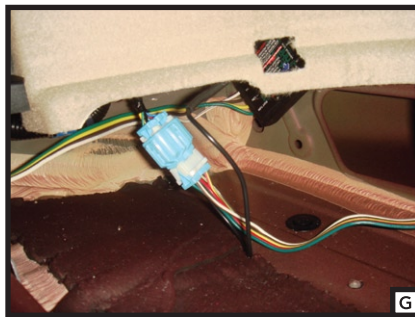
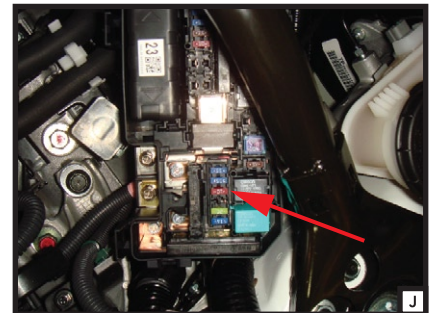
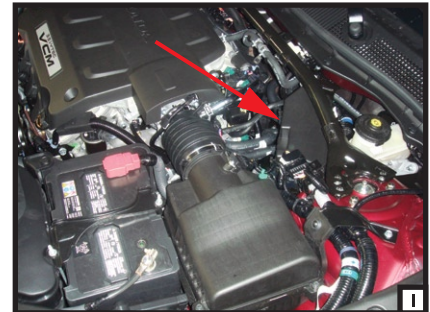
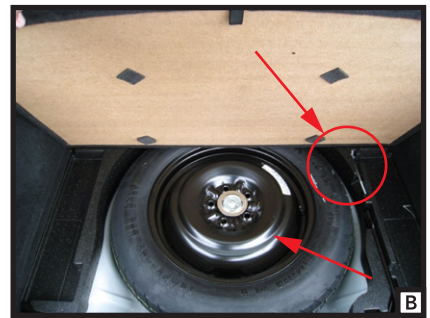
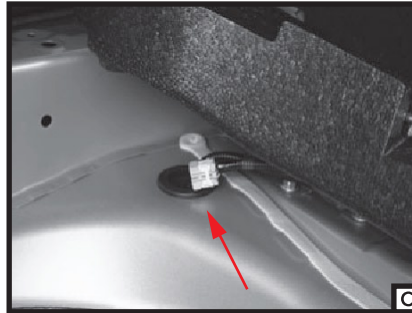
HONDA ACCORD CROSSTOUR

WIRING LOCATION GUIDE



MUST READ FIRST!

All steps must be followed to ensure correct function of the T-Connector. To verify proper installation once installed, test by connecting a test light or properly wired trailer.



ACURA RDX:

1. Open the rear hatch and remove cargo area cover, cargo area floor, cargo area lid (four clips), spare tire(A,B). Remove the two clips securing the right side trim panel and right floor spacer, remove the right floor spacer by gently pushing in at the back edge, and pulling out at the front edge to clear the vehicle bracket.

2. Locate the female connector under the passenger side floor spacer, near the back seat (B,C). Insert the harness connector into the vehicle's connector. Make sure the connectors are fully inserted with locking tabs in place.

3. Adhere the black converter box to the frame of the car using the double-sided tape provided. Route the 4-flat wire to the center of the vehicle and out the hatch when in use. Store 4-flat in spare tire storage area when not in use. Reinstall all items removed during install.

WARNING!

Verify miscellaneous items that may be hidden behind or under any surface before drilling to avoid damage and/or personal injury.

HONDA ACCORD CROSSTOUR:

1. Open the rear hatch and remove cargo area cover. Remove the cargo tray on the driver side by removing 10 mm bolts holding it in place (D,E). In the corner under the driver side trim panel locate the vehicle's trailer wiring harness connector (F). The connector will mate with the connector on the harness.

2. Insert the harness connector into the vehicles connector. Make sure the connector is fully inserted with locking tabs in place (G).

3. Adhere the black converter box to the frame of the car using the double-sided tape provided (H). Route the 4-flat wire to the center of the vehicle and out the hatch when in use. Store 4-flat in spare tire storage area when not in use. Reinstall all items removed during install.

4. Locate the vehicle's fuse panel under the hood on the driver's side near the firewall (I). Remove fuse panel cover and locate Trailer Tow fuse at position 10. Insert the 10 amp fuse (included) into fuse location (J).

WARNING!

Verify miscellaneous items that may be hidden behind or under any surface before drilling to avoid damage and/or personal injury.



56008