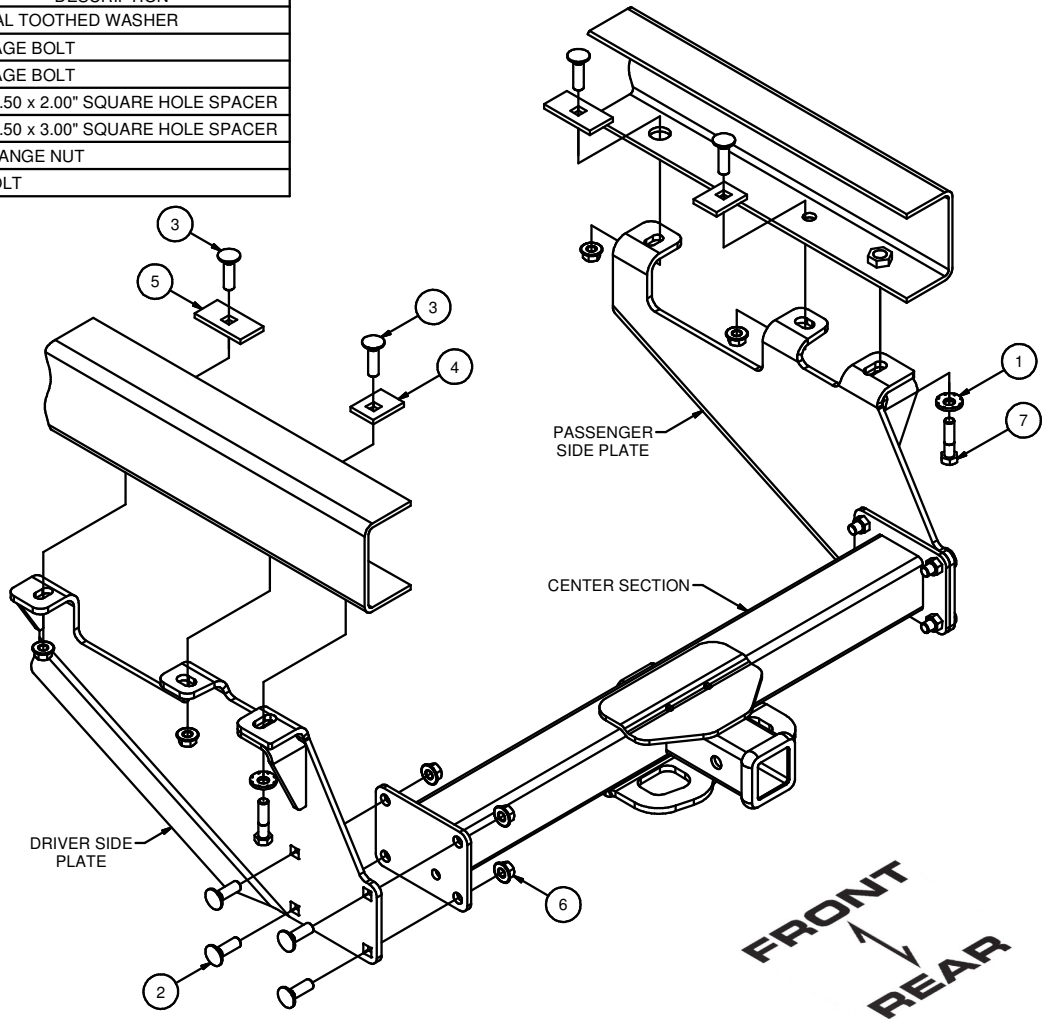
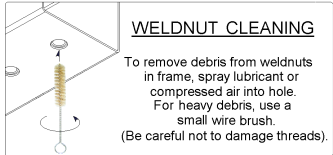


15317

1988-2000 CHEVROLET / GMC FULL SIZE PICKUPS  
WITH 10" STEP BUMPER

Parts List			
ITEM	QTY	PART NUMBER	DESCRIPTION
1	2	1/2	CONICAL TOOTHED WASHER
2	8	1/2-13 x 1 1/2, GR8	CARRIAGE BOLT
3	4	1/2-13 x 1 3/4	CARRIAGE BOLT
4	2	CM-SP1	.250 x 1.50 x 2.00" SQUARE HOLE SPACER
5	2	CM-SP4	.250 x 1.50 x 3.00" SQUARE HOLE SPACER
6	12	HFN 1213, GR8	HEX FLANGE NUT
7	2	M12 - 1.75 x 50mm	HEX BOLT



TOOLS REQUIRED
RATCHET
3/4" SOCKET
19mm SOCKET
TORQUE WRENCH
SAFETY GLASSES

**HITCH WEIGHT:** 69 LBS.  
**INSTALL TIME**  
PROFESSIONAL: 30 MINUTES  
NOVICE (DIY): 60 MINUTES  
**INSTALL NOTES:**  
- NO DRILLING REQUIRED  
- LOWER SPARE TIRE  
- REMOVE FACTORY BOLTS

**INSTALLATION STEPS**

- Loosely secure the center section to the driver and passenger side plates with 1/2" x 1-1/2 carriage bolts and hex flange nuts as shown.
- Lower spare tire for ease of installation.
- Remove existing bumper bracket bolts from both frame rails. Return hardware to vehicle owner.
- Align rearmost holes in side plates with the bolt holes from Step 3.
- Secure hitch with supplied M12 hex bolts and conical toothed washers into rearmost hole. Install 1/2" x 1-3/4 carriage bolts and SP1 spacers into middle holes and secure with 1/2" flange nuts. Install 1/2" x 1-3/4 carriage bolts and SP4 spacers into forwardmost holes and secure with 1/2" flange nuts.
- Torque all 1/2" fasteners to 110 ft-lbs.  
Torque all 12mm fasteners to 87 ft-lbs.
- Reinstall spare tire.

**PERIODICALLY CHECK THIS RECEIVER HITCH TO ENSURE THAT ALL FASTENERS ARE TIGHT AND THAT ALL STRUCTURAL COMPONENTS ARE SOUND.**