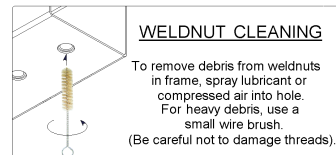


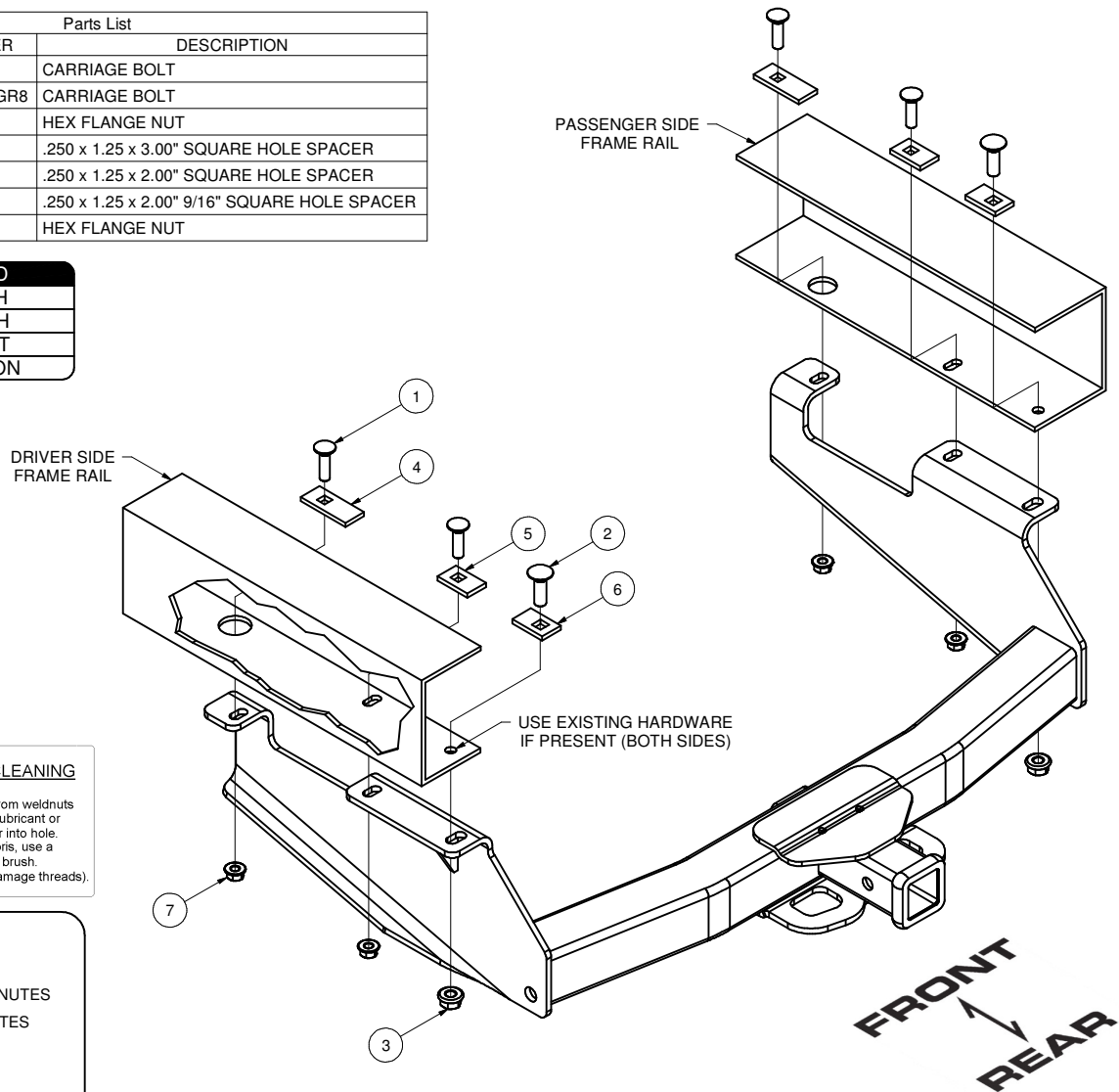
15313**2001-10 CHEVROLET/GMC 2500HD AND 3500HD, LONG BED, FULL SIZE PICKUP
WITH 10" STEP BUMPER, NOT INCLUDING 34" FRAME**

Parts List			
ITEM	QTY	PART NUMBER	DESCRIPTION
1	4	1/2-13 x 1 3/4	CARRIAGE BOLT
2	2	9/16-12 x 1 3/4, GR8	CARRIAGE BOLT
3	2	9_16-12, GR8	HEX FLANGE NUT
4	2	CM-SP19	.250 x 1.25 x 3.00" SQUARE HOLE SPACER
5	2	CM-SP3	.250 x 1.25 x 2.00" SQUARE HOLE SPACER
6	2	CM-SP73	.250 x 1.25 x 2.00" 9/16" SQUARE HOLE SPACER
7	4	HFN 1213	HEX FLANGE NUT

TOOLS REQUIRED
SOCKET WRENCH
TORQUE WRENCH
7/8" & 3/4" SOCKET
SOCKET EXTENSION



HITCH WEIGHT: 63 LBS.
 INSTALL TIME:
 PROFESSIONAL: 30 MINUTES
 NOVICE (DIY): 60 MINUTES
 INSTALL NOTES:
 - LOWER SPARE TIRE
 - NO DRILLING REQUIRED



INSTALLATION STEPS

1. Remove spare tire for ease of installation.
2. Raise hitch and align with existing holes in frame rails.
3. Install 1/2-13 carriage bolts and SP19 spacers in the forwardmost holes. Install 1/2-13 carriage bolts and SP3 spacers in the center holes. Install 9/16-12 carriage bolts and SP73 spacers in the rearmost holes.
Note: If existing hardware and weldnuts are present in the rearmost holes, use the existing hardware in place of the 9/16" hardware in this kit.
4. Torque all 1/2" hardware to 110 ft-lbs.
Torque all 9/16" hardware to 150 ft-lbs.
5. Reinstall spare tire.

PERIODICALLY CHECK THIS RECEIVER HITCH TO ENSURE THAT ALL FASTENERS ARE TIGHT AND THAT ALL STRUCTURAL COMPONENTS ARE SOUND.