



Safety glasses should be worn at all times while installing this product.

YEARS: 2012-PRESENT

MAKE: SCION

MODEL: iQ

STYLE: COMPACT

**WARNING: NEVER EXCEED YOUR VEHICLE MANUFACTURER'S RECOMMENDED TOWING CAPACITY**

**WEIGHT CARRYING:**  
 TRAILER WEIGHT: 1,000 LBS.  
 TONGUE WEIGHT: 150 LBS.

**INSTALLATION TIME: 20 MIN.**  
 THE INSTALL TIME LISTED IS FOR PROFESSIONAL INSTALLERS. IF YOU ARE HESITANT TO UNDERTAKE THIS TASK ON YOUR OWN, CONTACT AN AUTHORIZED CURT INSTALLER FOR ADDITIONAL ASSISTANCE.

**INSTALLATION TIPS:**

- BEFORE YOU BEGIN INSTALLATION, READ ALL INSTRUCTIONS THOROUGHLY.
- TO EASE INSTALLATION, 2 PEOPLE MAY BE REQUIRED.
- USING PROPER TOOLS WILL GREATLY IMPROVE THE QUALITY OF THE INSTALL AND REDUCE THE TIME REQUIRED.

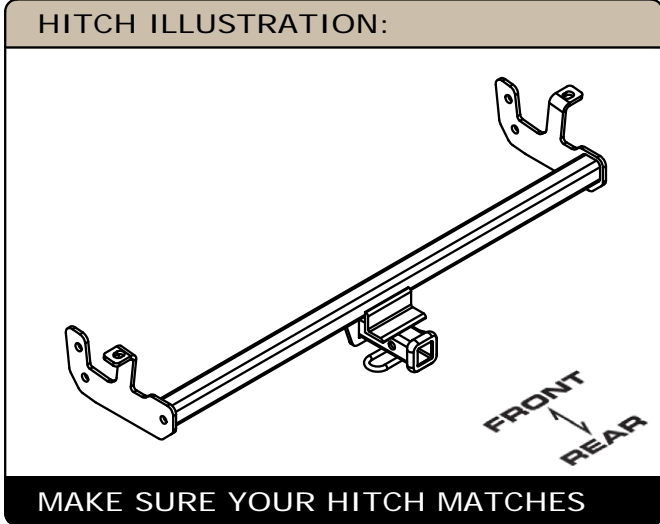


**INSTALLATION REQUIRES:**

RATCHET	TORQUE WRENCH	6" SOCKET EXTENSION
DIE GRINDER	9/16" 11/16" SOCKET	SAFETY GLASSES

**LEVEL OF DIFFICULTY: MODERATE**

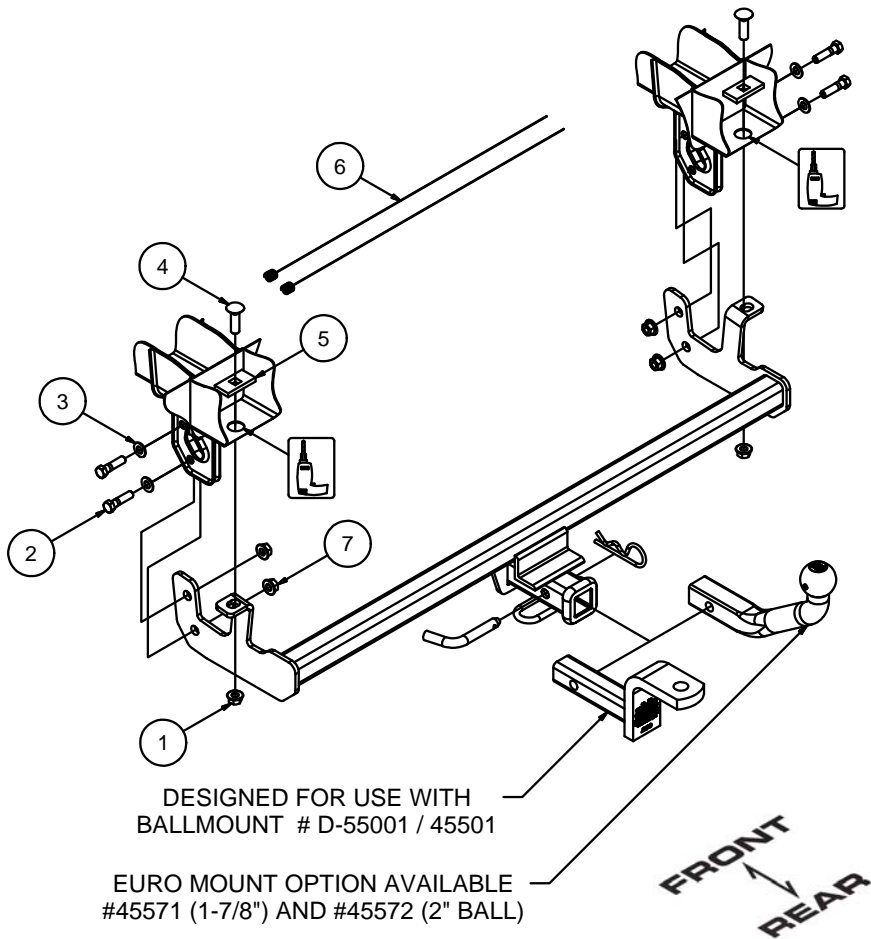
<i>EASY</i>	<i>MODERATE</i>	<i>CHALLENGING</i>
- HOLE ENLARGEMENT		
- FISHWIRE HARDWARE		



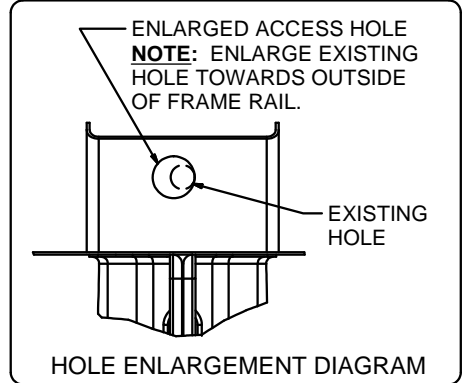
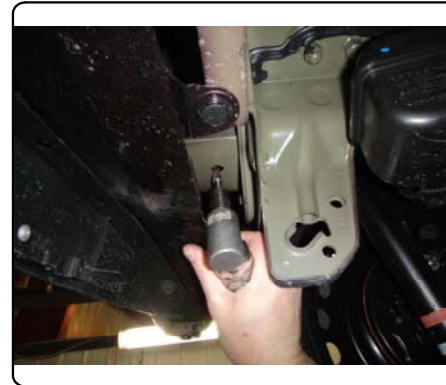
**PERIODICALLY CHECK THIS RECEIVER HITCH TO ENSURE ALL FASTENERS ARE TIGHT AND ALL STRUCTURAL COMPONENTS ARE SOUND**  
 CURT Manufacturing LLC. warrants this product to be free of defects in material and/or workmanship at the time of retail purchase by the original purchaser. If the product is found to be defective, Curt Manufacturing LLC. may repair or replace the product at their option, when the product is returned, prepaid, with proof of purchase. Alteration to, misuse of, or improper installation of this product voids the warranty. Curt Manufacturing LLC.'s liability is limited to repair or replacement of products found to be defective, and specifically excludes liability for incidental or consequential loss or damage.

# INSTALLATION WALKTHROUGH:

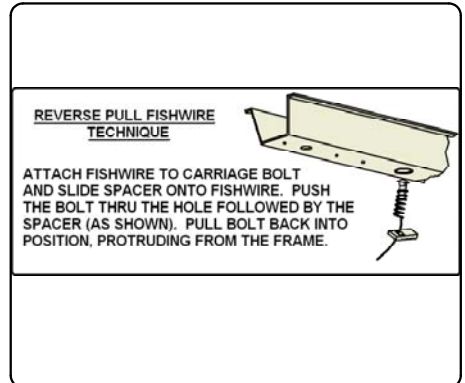
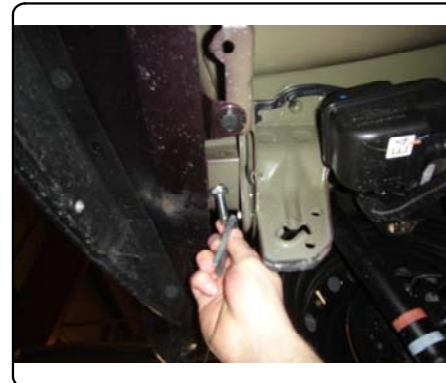
Parts List			
ITEM	QTY	PART NUMBER	DESCRIPTION
1	2	7/16-14	HEX FLANGE NUT
2	4	3/8-16 X 1 1/2	HEX BOLT
3	4	3/8"	WASHER
4	2	7/16-14 x 1 1/2	CARRIAGE BOLT
5	2	CM-SP7	.250 x 1.00 x 2.00" SQUARE HOLE SPACER
6	2	7_16 FISHWIRE	7/16" FISHWIRE
7	4	HFN3816	HEX FLANGE NUT



1. Enlarge existing hole to allow 7/16" carriage bolts and SP7 spacers to pass through, both sides.

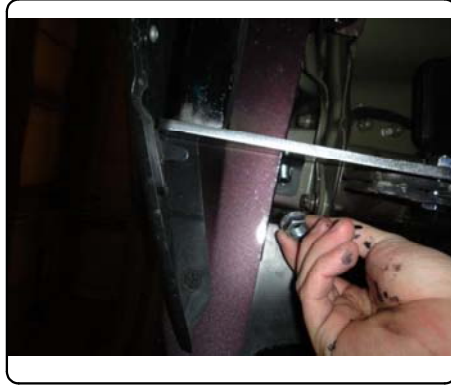


2. Reverse fishwire 7/16" carriage bolts and SP7 spacers through enlarged access holes, both sides.

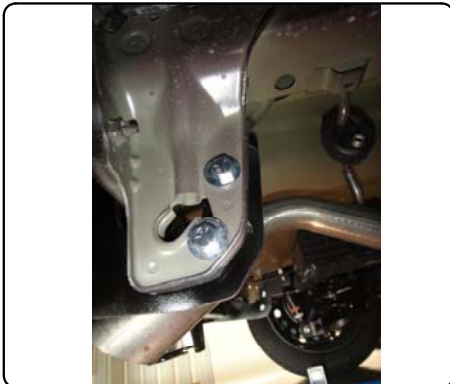


## INSTALLATION WALKTHROUGH:

3. Raise hitch into position and loosely secure to carriage bolts using 7/16" hex flange nuts. **Note:** The side plates will slide between the inside of the tow loops.



4. Align holes in side plates with holes in tow loops and secure using 3/8" hex bolts, 3/8" washers and 3/8" hex flange nuts, as shown.



5. Torque all 7/16" hardware to 50 ft-lbs.  
Torque all 3/8" hardware to 30 ft-lbs.



**GROSS LOAD CAPACITY WHEN USED AS A WEIGHT CARRYING HITCH: 1,000 LBS. TRAILER WEIGHT & 150 LBS. TONGUE WEIGHT.**

\*\*\*DO NOT EXCEED VEHICLE MANUFACTURER'S RECOMMENDED TOWING CAPACITY.\*\*\*

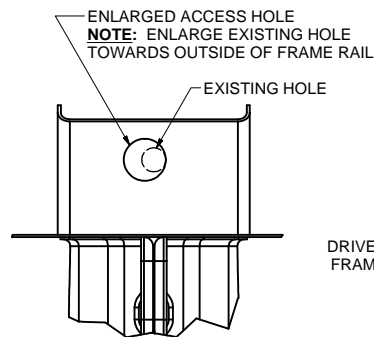
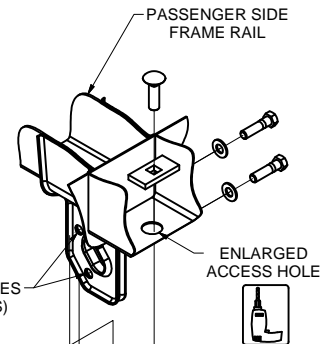
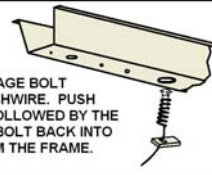
**WARNING: ALL NON-TRAILER LOADS APPLIED TO THIS PRODUCT MUST BE SUPPORTED BY 18050 STABILIZING STRAPS.**

\*\* FAILURE TO PROPERLY SUPPORT NON-TRAILER LOADS WILL VOID PRODUCT WARRANTY\*\*

Parts List				
ITEM	QTY	PART NUMBER	DESCRIPTION	
1	2	7/16-14	HEX FLANGE NUT	
2	4	3/8-16 X 1 1/2	HEX BOLT	
3	4	3/8"	WASHER	
4	2	7/16-14 x 1 1/2	CARRIAGE BOLT	
5	2	CM-SP7	.250 x 1.00 x 2.00" SQUARE HOLE SPACER	
6	2	7_16 FISHWIRE	7/16" FISHWIRE	
7	4	HFN3816	HEX FLANGE NUT	

#### REVERSE PULL FISHWIRE TECHNIQUE

ATTACH FISHWIRE TO CARRIAGE BOLT AND SLIDE SPACER ONTO FISHWIRE. PUSH THE BOLT THRU THE HOLE FOLLOWED BY THE SPACER (AS SHOWN). PULL BOLT BACK INTO POSITION, PROTRUDING FROM THE FRAME.



HOLE ENLARGEMENT DIAGRAM

TOOLS REQUIRED	
	RATCHET
	TORQUE WRENCH
	6" EXTENSION
	DIE GRINDER
	9/16" SOCKET
	11/16" SOCKET
	SAFETY GLASSES

HITCH WEIGHT: 22 LBS.

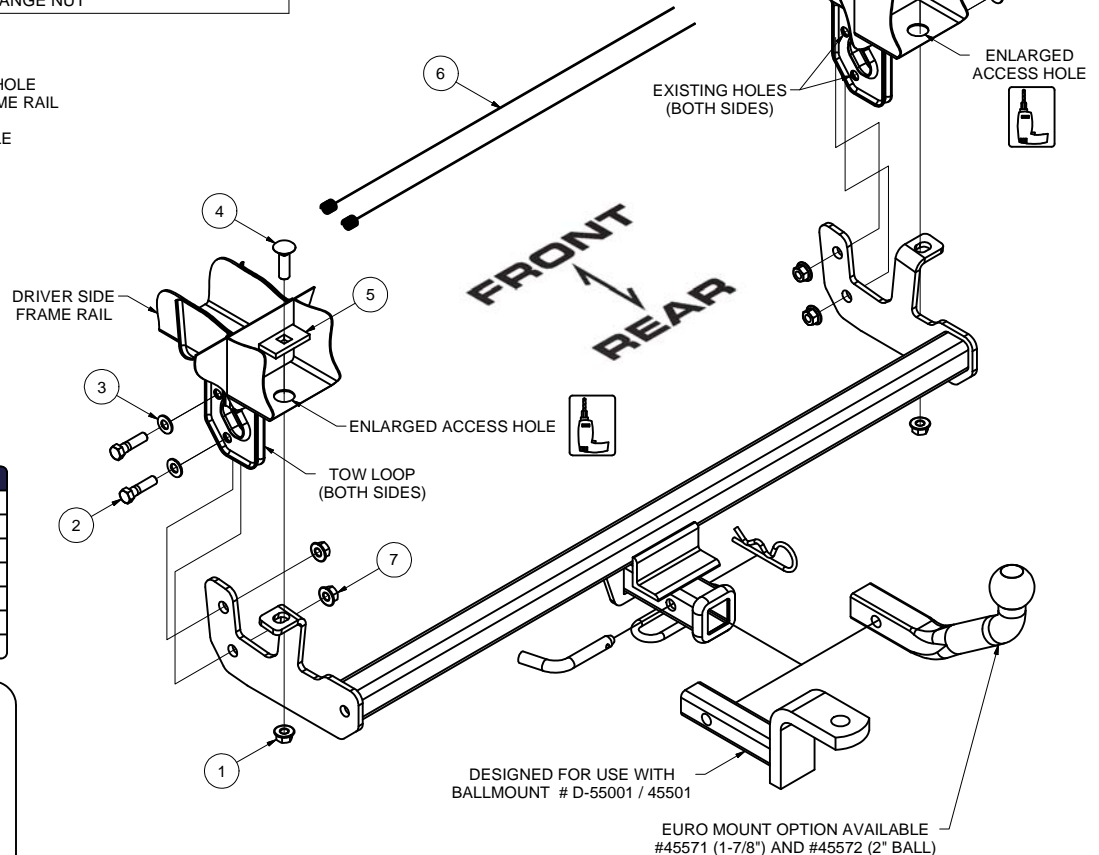
#### INSTALL TIME

PROFESSIONAL: 20 MINUTES

NOVICE (DIY): 40 MINUTES

#### INSTALL NOTES:

- HOLE ENLARGEMENT
- FISHWIRE HARDWARE



## INSTALLATION STEPS

1. Enlarge existing hole to allow 7/16" carriage bolts and SP7 spacers to pass through, both sides. See Hole Enlargement Diagram.
2. Reverse fishwire 7/16" carriage bolts and SP7 spacers through enlarged access holes, both sides. See Reverse Pull Fishwire Technique
3. Raise hitch into position and loosely secure to carriage bolts using 7/16" hex flange nuts.  
**Note:** The side plates will slide between the inside of the tow loops.
4. Align holes in side plates with holes in tow loops and secure using 3/8" hex bolts, 3/8" washers and 3/8" hex flange nuts, as shown.
5. Torque all 7/16" hardware to 50 ft-lbs.  
Torque all 3/8" hardware to 30 ft-lbs.

PERIODICALLY CHECK THIS RECEIVER HITCH TO ENSURE THAT ALL FASTENERS ARE TIGHT AND THAT ALL STRUCTURAL COMPONENTS ARE SOUND.

Curt Manufacturing LLC., warrants this product to be free of defects in material and/or workmanship at the time of retail purchase by the original purchaser. If the product is found to be defective, Curt Manufacturing LLC., may repair or replace the product, at their option, when the product is returned, prepaid, with proof of purchase. Alteration to, misuse of, or improper installation of this product voids the warranty. Curt Manufacturing LLC.'s liability is limited to repair or replacement of products found to be defective, and specifically excludes liability for incidental or consequential loss or damage.