

# 56174 FIAT 500

## WIRING LOCATION GUIDE



### MUST READ FIRST!

All steps must be followed to ensure correct function of the T-Connector. To verify proper installation once installed, test by connecting a test light or properly wired trailer.

1. Open the rear hatch. Remove the two Phillips screws securing the rear scuff panel (A). Lift up the rear portion of the felt floor covering for access to the lower lip of the rear scuff panel (B). Remove the rear scuff panel by pulling out on the bottom and then up.
2. On both sides of the trunk remove the plastic fastener and cargo loop holding the felt trunk liner in place (C).
3. Remove the two 10mm hex bolts securing the taillight housing and remove it from the vehicle (D). The connectors for the taillight will look similar to those on the T-Connector. Taking care not to damage the locking tab, separate the housings and place the taillight in a safe place. Remove the rubber grommet from its hole in chassis (E).
4. On the driver's side, pull back on the felt trunk liner to locate the hole for the rubber grommet that the taillight's wiring is routed through (F). Route the T-Connector end with the yellow wire through the hole in the chassis. Cut a slit in the grommet and route the end of the T-Connector through it.
5. Insert the T-Connector end with the yellow wire between the separated connectors. Make sure the connectors are fully inserted with locking tabs in place.
6. Locate a flat spot inside the vehicle behind the felt liner of the trunk and adhere the black converter box to the frame of the vehicle using the double-sided tape provided.

### WARNING!

Verify miscellaneous items that may be hidden behind or under any surface before drilling to avoid damage and/or personal injury.

7. Locate a suitable grounding point near the converter such as an existing screw with nut in the vehicle's frame or drill a 3/32" hole and secure the eyelet of the white ground wire using the screw provided.
8. Review the CME-PCL-INS instruction sheet and route the black power wire from the battery to the converter as shown.
9. Route the T-Connector end with the green wire to the passenger side behind the removed scuff panel. Repeat Steps 3-5 on the passenger side using the T-Connector end with the green wire. Use the cable ties provided to secure wires to an existing wiring harness.
10. Route the 4-flat out from under the felt trunk liner and to the center of the vehicle when in use. Roll up and store in an out of the way location when not in use.
11. Reinstall all items removed during install.

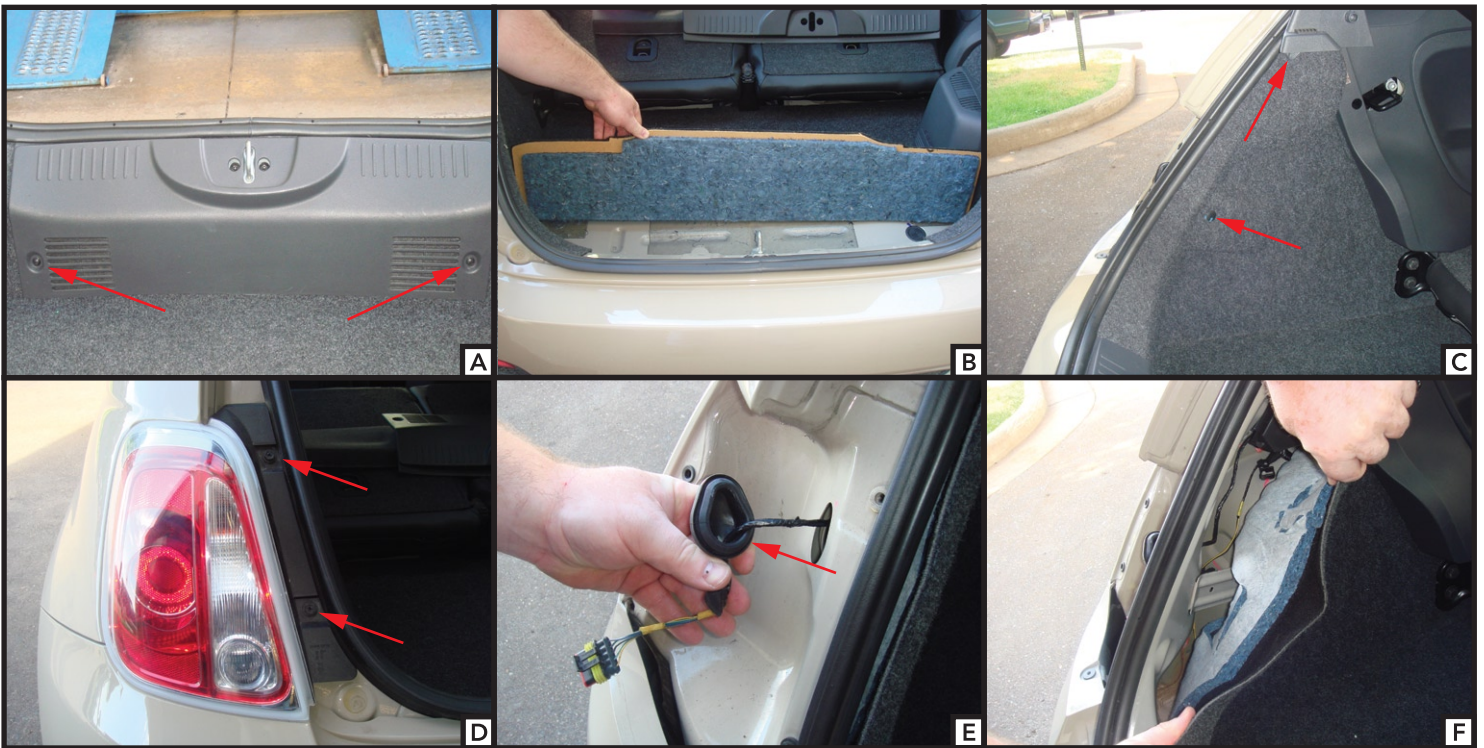
### IMPORTANT!

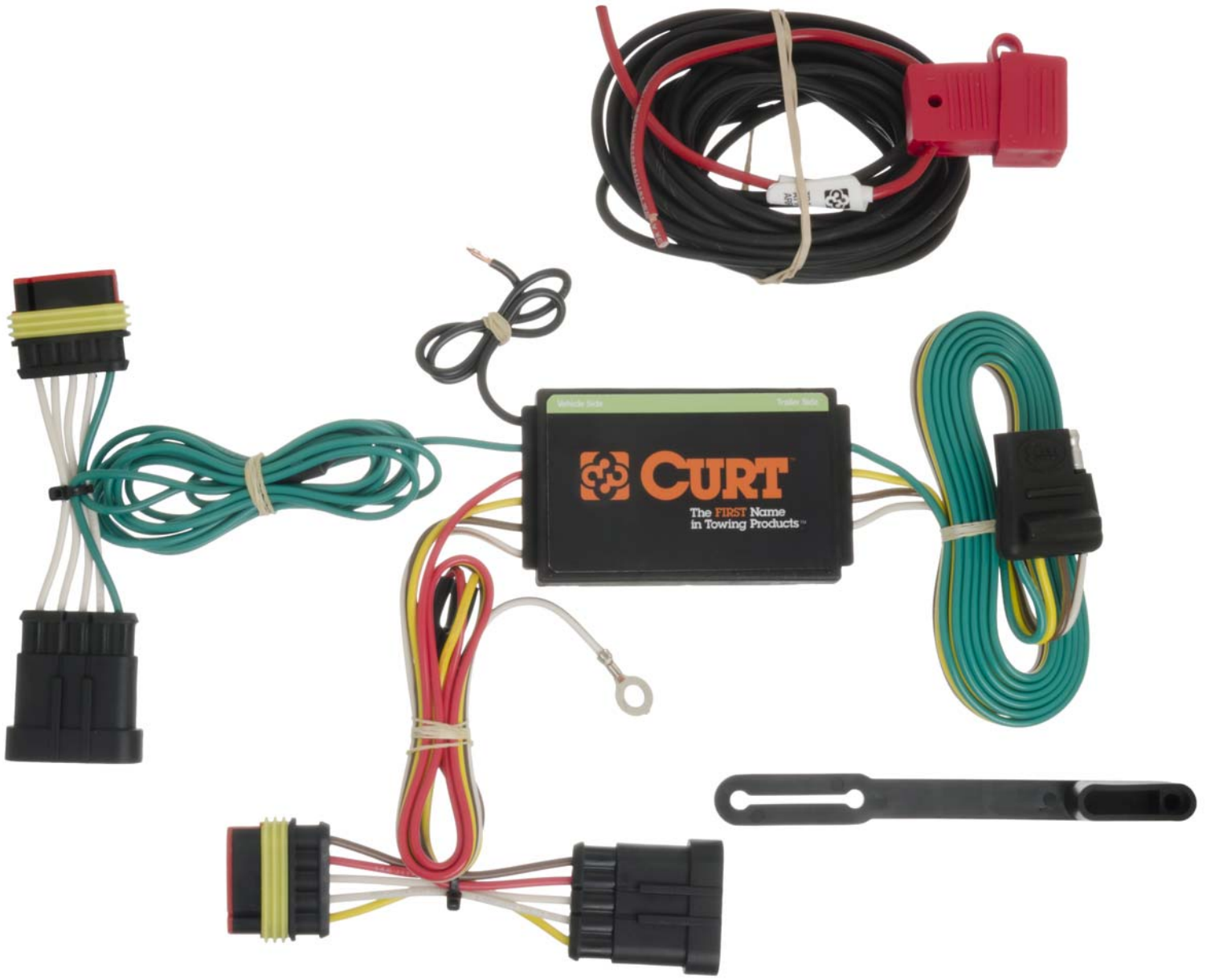
The battery connection must be fuse protected, 10 amp max. Exceeding the product rating can cause loss of warranty, overheating and potential fire. Do not exceed the tow vehicle's lamp load rating or the product rating, whichever is lower:

Signal Circuits - 3.0 amps per side

Tail/Running Circuits - 6.0 amps total

Check vehicle owner's manual or contact the vehicle manufacturer for more information.





Find more CURT products on our website.

Learn more about trailer hitches and towing we have.