

INSTALLATION INSTRUCTIONS

WARNING: NEVER EXCEED YOUR VEHICLE MANUFACTURER'S RECOMMENDED TOWING CAPACITY

E16 / Q16 WEDGE KIT



16991 PARTS LIST

Item#	Qty	Description
1	1	E16 wedge weldment
2	2	Hex bolt
3	2	Helical lock washer, 5/8"

16992 PARTS LIST

Item#	Qty	Description
1	1	Q16 wedge weldment
2	2	Hex bolt
3	2	Helical lock washer, 5/8"

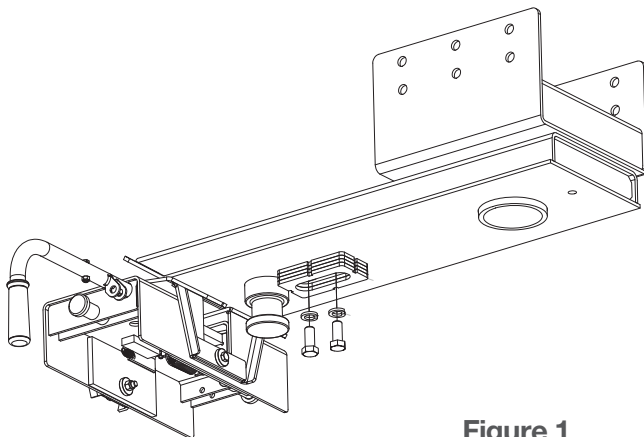
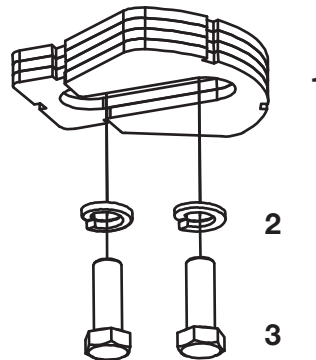
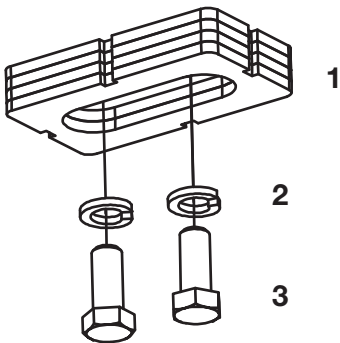


Figure 1

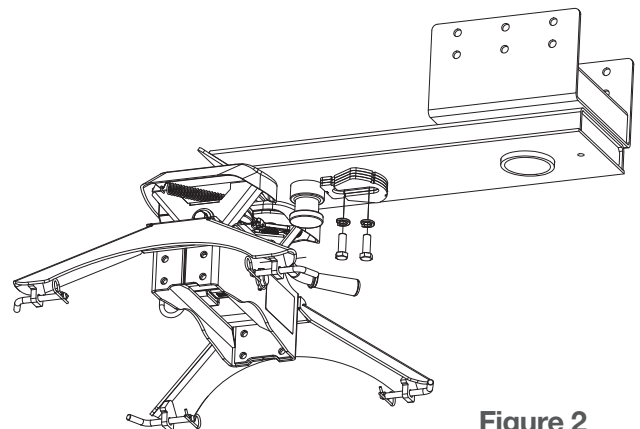


Figure 2

ASSEMBLY

Step 1

Attach appropriate wedge (#1) to pin box using 5/8" bolts (#2) and washers (#3). Tighten until lock washer begins to engage.

Step 2

Apply grease to both sides of the wedge and skid plate.

Step 3

Couple the trailer following the owners manual for the 5th wheel hitch and pin box.

Note: 5th wheel hitch and pin box shown for reference only. See figures, 1 and 2.

Step 4

Tap wedge with a rubber mallet into skid plate as much as possible. Tighten one or both bolts if accessible.

Step 6

Uncouple the trailer following 5th wheel hitch manual.

Step 7

Tighten both 5/8" bolts to 150 ft. lbs. torque.

BEFORE TOWING EVERY TIME

Ensure all fasteners are tight and that all structural components are sound. **Note:** Do not tow trailer with worn or damaged parts.

Ensure the trailer weight does not exceed any part of the towing system. Be sure load is heavier towards front of the trailer while not exceeding the hitch vertical weight rating. Be sure trailer load is secured to prevent shifting and centered from left to right. **Note:** Never load the trailer heavier behind the trailer axle(s).

Check tires to ensure they are inflated to the proper specification. Follow vehicle and trailer recommendations.

Verify trailer lights, electric brakes and breakaway switches are working properly.

Visually confirm the 5th wheel jaws are locked around the trailers king pin.

Always ensure the safety pin is installed on the 5th wheel locking handle before towing.