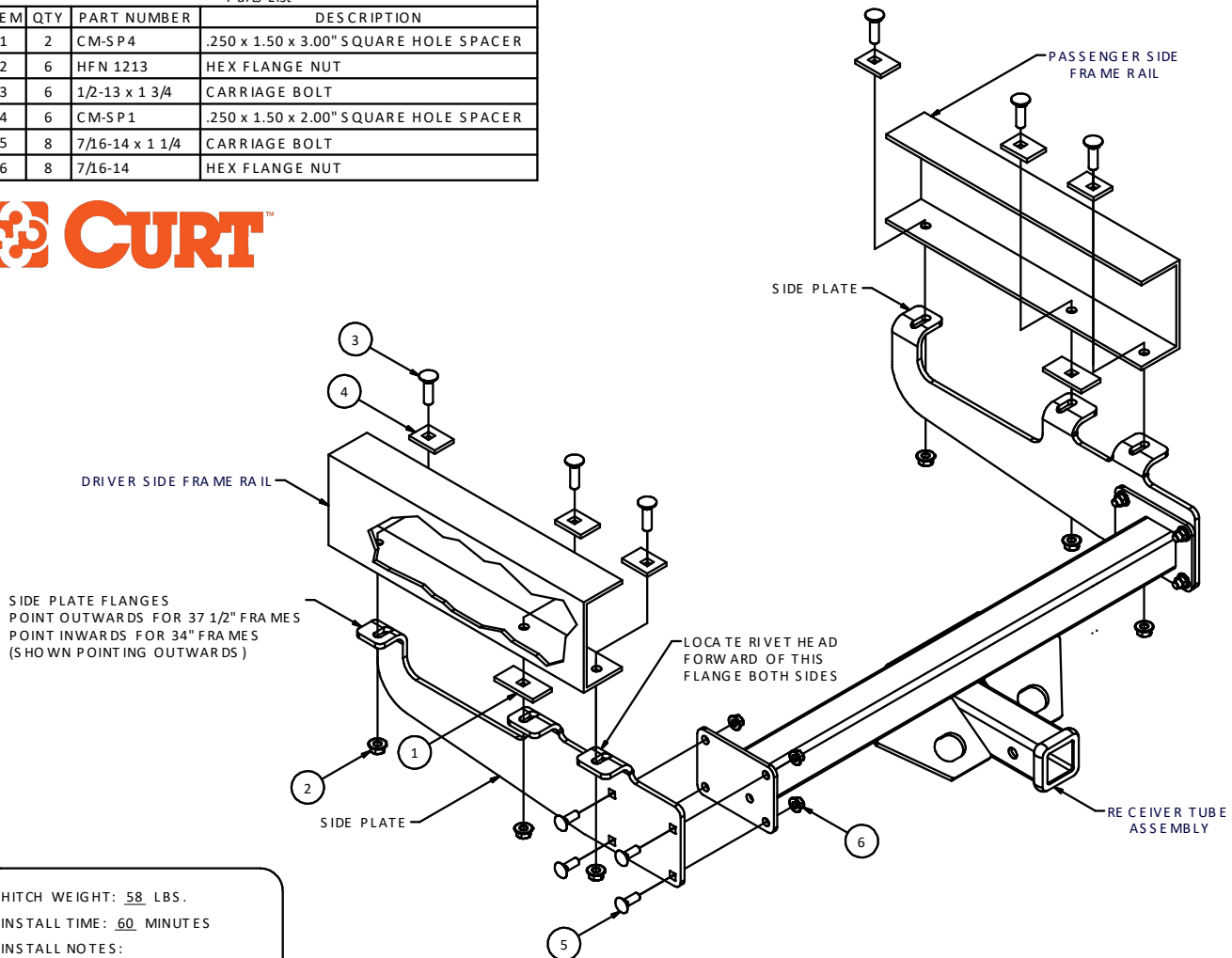


155101967-1999 FOR D PICKUP, FULL SIZE, OLD BODY STYLE
1999 FOR D F-450 CAB & CHASSIS, 2WD ONLYGROSS LOAD CAPACITY WHEN USED AS A WEIGHT CARRYING HITCH: 15,000 LBS. TRAILER WEIGHT & 1,500 LBS. TONGUE WEIGHT.
GROSS LOAD CAPACITY WHEN USED AS A WEIGHT DISTRIBUTION HITCH: 16,000 LBS. TRAILER WEIGHT & 1,600 LBS. TONGUE WEIGHT*****DO NOT EXCEED VEHICLE MANUFACTURER'S RECOMMENDED TOWING CAPACITY.*****

| Parts List | | | |
|------------|-----|-----------------|--|
| ITEM | QTY | PART NUMBER | DESCRIPTION |
| 1 | 2 | CM-SP4 | .250 x 1.50 x 3.00" SQUARE HOLE SPACER |
| 2 | 6 | HFN 1213 | HEX FLANGE NUT |
| 3 | 6 | 1/2-13 x 1 3/4 | CARRIAGE BOLT |
| 4 | 6 | CM-SP1 | .250 x 1.50 x 2.00" SQUARE HOLE SPACER |
| 5 | 8 | 7/16-14 x 1 1/4 | CARRIAGE BOLT |
| 6 | 8 | 7/16-14 | HEX FLANGE NUT |



HITCH WEIGHT: 58 LBS.
 INSTALL TIME: 60 MINUTES
 INSTALL NOTES:
 - DRILLING REQUIRED

INSTALLATION STEPS

1. Bolt receiver tube assembly to driver and passenger side plates with 7/16" carriage bolts and hex flange nuts. Side plate flanges should point outwards for 37 1/2" frames and inwards for 34" frames.
2. Loosen spare tire bracket to allow room for positioning the hitch. Position hitch so that the rivet head in the frame rails are located just forward of the rear most side plate flange.
3. Using hitch as a template drill (6) 1/2" holes through frame rails
4. Slide the CM-SP4 spacer in between the hitch side plate and frame rail as shown.
5. Install 1/2" carriage bolts, CM-SP1 spacers and hex flange nuts as shown.
6. Retighten spare tire bracket. Torque 1/2" hardware to 110 lb-ft and 7/16" to 70 lb-ft.

PERIODICALLY CHECK THIS RECEIVER HITCH TO ENSURE THAT ALL FASTENERS ARE TIGHT AND THAT ALL STRUCTURAL COMPONENTS ARE SOUND.

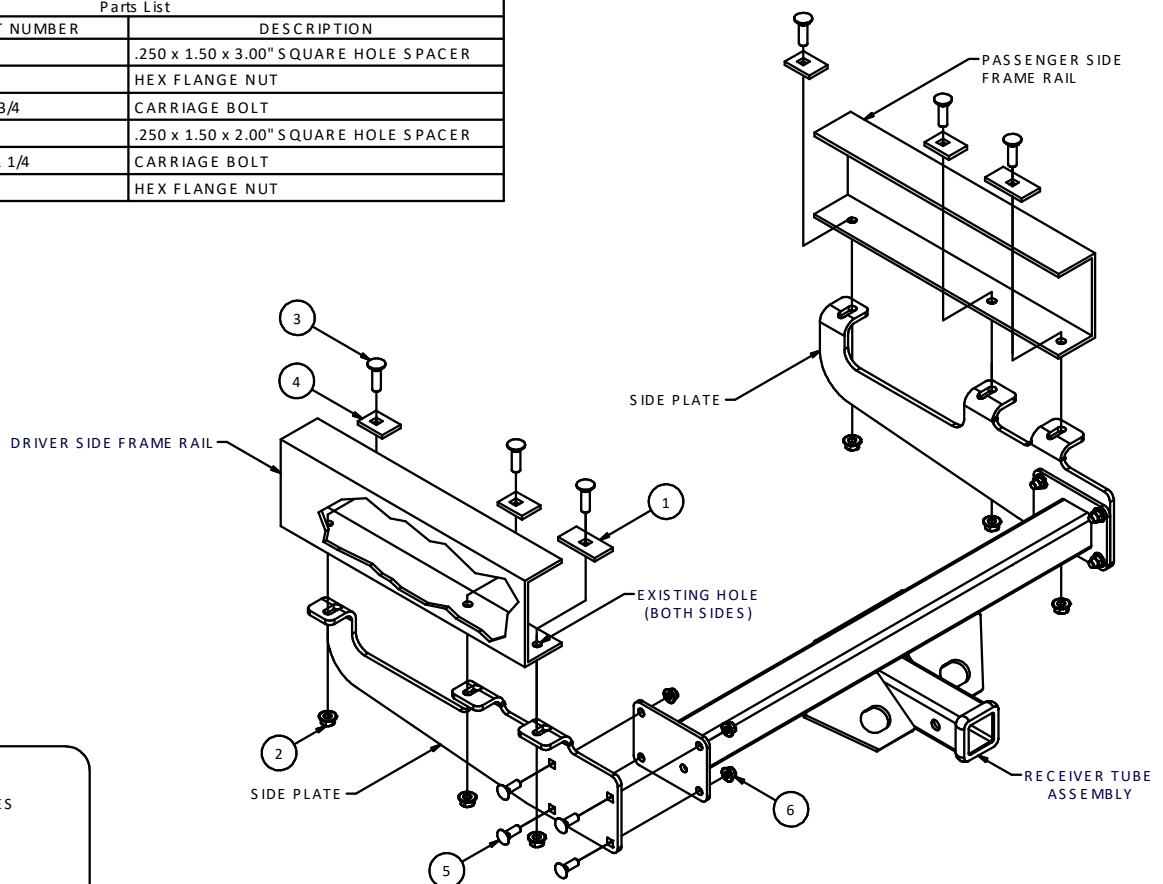
15510

DODGE PICKUP, FULL SIZE

GROSS LOAD CAPACITY WHEN USED AS A WEIGHT CARRYING HITCH: 15,000 LBS. TRAILER WEIGHT & 1,500 LBS. TONGUE WEIGHT.
 GROSS LOAD CAPACITY WHEN USED AS A WEIGHT DISTRIBUTION HITCH: 16,000 LBS. TRAILER WEIGHT & 1,600 LBS. TONGUE WEIGHT

DO NOT EXCEED VEHICLE MANUFACTURER'S RECOMMENDED TOWING CAPACITY.

| Parts List | | | |
|------------|-----|-----------------|--|
| ITEM | QTY | PART NUMBER | DESCRIPTION |
| 1 | 2 | CM-SP4 | .250 x 1.50 x 3.00" SQUARE HOLE SPACER |
| 2 | 6 | HFN 1213 | HEX FLANGE NUT |
| 3 | 6 | 1/2-13 x 1 3/4 | CARRIAGE BOLT |
| 4 | 4 | CM-SP1 | .250 x 1.50 x 2.00" SQUARE HOLE SPACER |
| 5 | 8 | 7/16-14 x 1 1/4 | CARRIAGE BOLT |
| 6 | 8 | 7/16-14 | HEX FLANGE NUT |



HITCH WEIGHT: 58 LBS.

INSTALL TIME: 60 MINUTES

INSTALL NOTES:

- DRILLING REQUIRED
- REMOVE SPARE TIRE
- REMOVE EXHAUST HANGER BRACKET

INSTALLATION STEPS

1. For 1972-1993 vehicles, remove spare tire and hanger bolt. For 1994-1996 vehicles remove rear exhaust hanger bracket.
2. Bolt receiver tube assembly to side plates with 7/16" carriage bolts and nuts. Side plate flanges should point outwards.
3. Locate hitch with the slot of the rear most side plate flange aligned with the large hole in the rear of the vehicle frame rail.
4. Install 1/2" carriage bolt, CM-SP4 spacers, and hex flange nut into the existing hole.
5. Using the hitch as a template, drill 1/2" holes for the remaining hardware.
6. Install remaining 1/2" carriage bolts, CM-SP1 spacers, and hex flange nuts as shown.
7. Torque 1/2" hardware to 110 lb-ft and 7/16" hardware to 70 lb-ft. Reinstall exhaust hanger bracket or spare tire with hanger bolt removed in Step 1. Spare tire cannot be replaced with Dodge 1 ton dually.

PERIODICALLY CHECK THIS RECEIVER HITCH TO ENSURE THAT ALL FASTENERS ARE TIGHT AND THAT ALL STRUCTURAL COMPONENTS ARE SOUND.

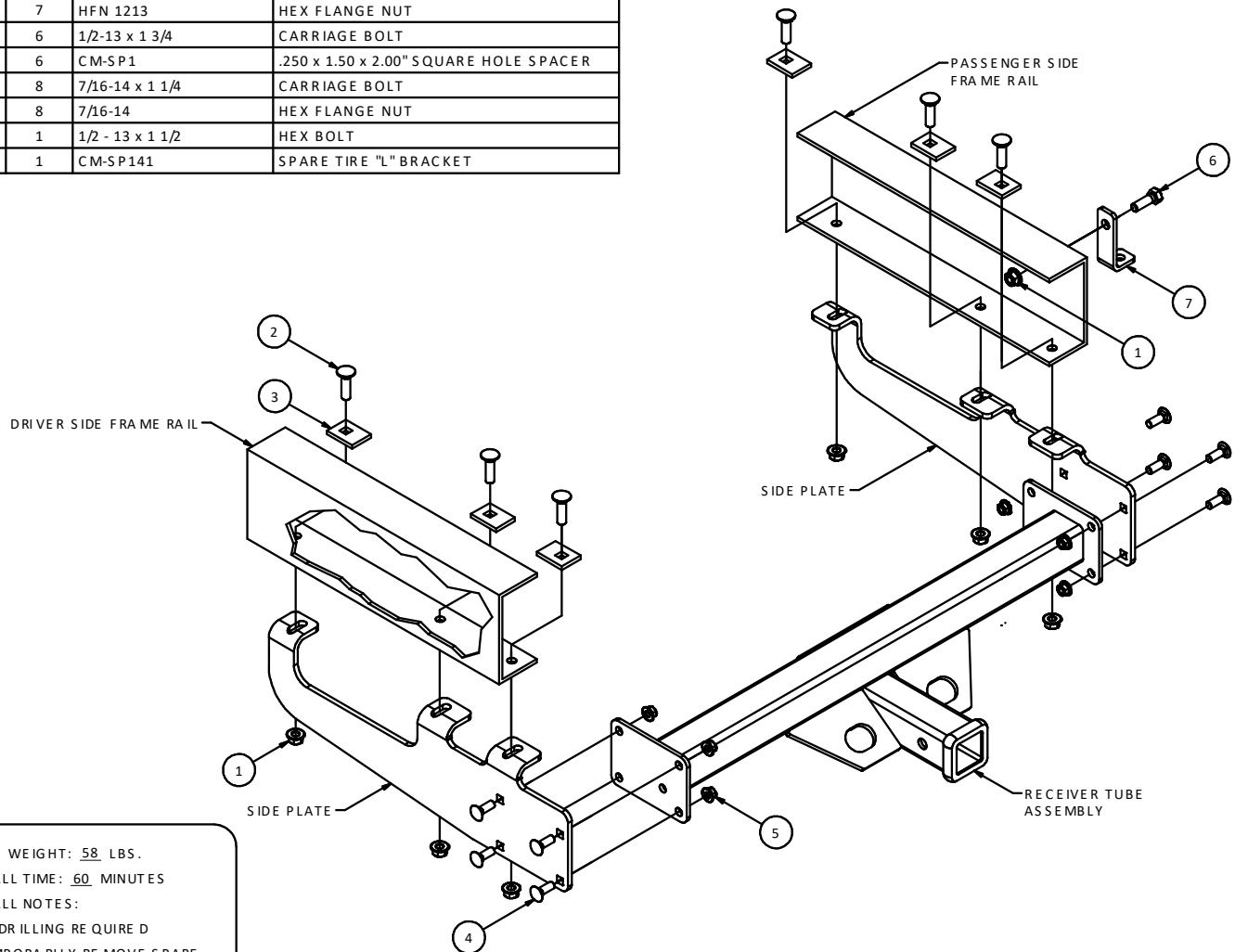
15510

1962-1987 CHEVROLET/GMC PICKUP, FULL SIZE, NOT SHORT BOX
 1988-1999 CHEVROLET/GMC LONG AND SHORT CAB & CHASSIS, WITH 34" FRAME

GROSS LOAD CAPACITY WHEN USED AS A WEIGHT CARRYING HITCH: 15,000 LBS. TRAILER WEIGHT & 1,500 LBS. TONGUE WEIGHT.
 GROSS LOAD CAPACITY WHEN USED AS A WEIGHT DISTRIBUTION HITCH: 16,000 LBS. TRAILER WEIGHT & 1,600 LBS. TONGUE WEIGHT

***** DO NOT EXCEED VEHICLE MANUFACTURER'S RECOMMENDED TOWING CAPACITY.*****

| Parts List | | | |
|------------|-----|------------------|--|
| ITEM | QTY | PART NUMBER | DESCRIPTION |
| 1 | 7 | HFN 1213 | HEX FLANGE NUT |
| 2 | 6 | 1/2-13 x 1 3/4 | CARRIAGE BOLT |
| 3 | 6 | CM-SP1 | .250 x 1.50 x 2.00" SQUARE HOLE SPACER |
| 4 | 8 | 7/16-14 x 1 1/4 | CARRIAGE BOLT |
| 5 | 8 | 7/16-14 | HEX FLANGE NUT |
| 6 | 1 | 1/2 - 13 x 1 1/2 | HEX BOLT |
| 7 | 1 | CM-SP141 | SPARE TIRE "L" BRACKET |



HITCH WEIGHT: 58 LBS.
 INSTALL TIME: 60 MINUTES
 INSTALL NOTES:
 - NO DRILLING RE QUIRE D
 - TEMPORARILY RE MOVE SPARE
 TIRE

INSTALLATION STEPS

1. Temporarily remove spare tire. Remove and discard bumper reinforcement brackets.
2. Bolt receiver tube assembly to side plates with 7/16" carriage bolts and hex flange nuts. Side plate flanges should point inwards.
3. Insert 1/2" carriage bolts, CM-SP1 spacers, and hex flange nuts as shown.
4. Install CM-SP141 "SPARE TIRE "L" BRACKET" with 1/2" hex bolt and hex flange nut, then install spare tire carrier bolt.
5. Torque 1/2" hardware to 110 lb-ft.
6. Replace spare tire.

PERIODICALLY CHECK THIS RECEIVER HITCH TO ENSURE THAT ALL FASTENERS ARE TIGHT AND THAT ALL STRUCTURAL COMPONENTS ARE SOUND.

Learn more about trailer hitches and towing we have.