



Safety glasses should be worn at all times while installing this product.

YEARS: 2012

MAKE: LEXUS

MODEL: LS 460

STYLE: SEDAN

WARNING: NEVER EXCEED YOUR VEHICLE MANUFACTURER'S RECOMMENDED TOWING CAPACITY

WEIGHT CARRYING:
 TRAILER WEIGHT: 3500 LBS.
 TONGUE WEIGHT: 350 LBS.

PRO INSTALL TIME: 90 MIN.
NOVICE INSTALL TIME: 180 MIN.

IF YOU ARE HESITANT TO UNDERTAKE THIS TASK ON YOUR OWN, CONTACT AN AUTHORIZED CURT INSTALLER FOR ADDITIONAL ASSISTANCE.

INSTALLATION REQUIRES:

	10mm 12mm SOCKET	
6" SOCKET EXTENSION		

INSTALLATION TIPS:

- BEFORE YOU BEGIN INSTALLATION, READ ALL INSTRUCTIONS THOROUGHLY.
- TO EASE INSTALLATION, 2 PEOPLE MAY BE REQUIRED.
- USING PROPER TOOLS WILL GREATLY IMPROVE THE QUALITY OF THE INSTALL AND REDUCE THE TIME REQUIRED.

LEVEL OF DIFFICULTY: CHALLENGING

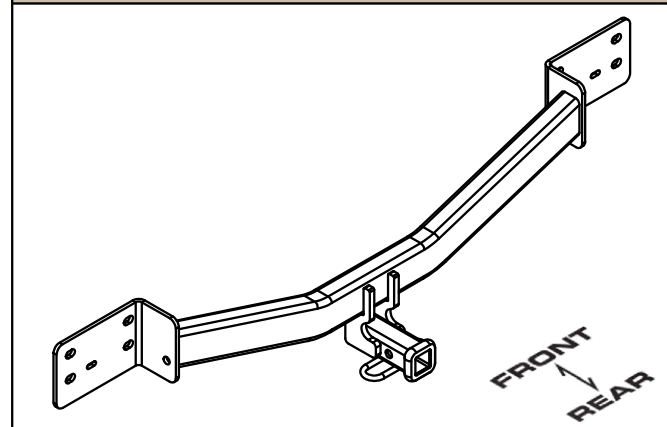
EASY	MODERATE	CHALLENGING
	TRIM UNDERBODY PANEL	
	REMOVE BUMPER	
	NO DRILLING REQUIRED	

VEHICLE PHOTO:



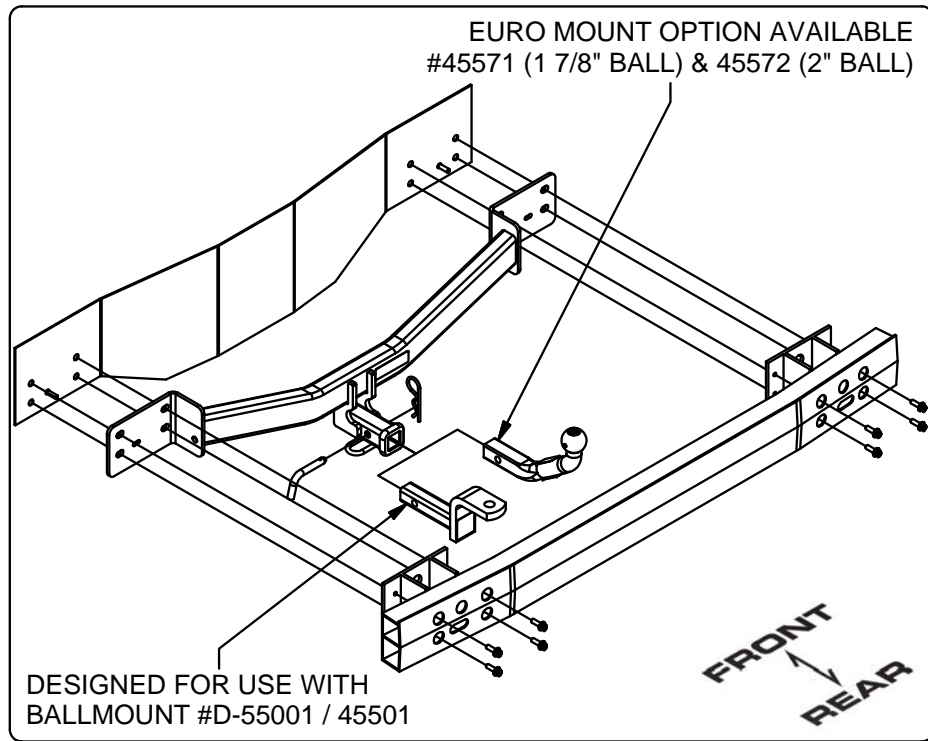
REPRESENTATIVE PHOTO

HITCH ILLUSTRATION:



MAKE SURE YOUR HITCH MATCHES

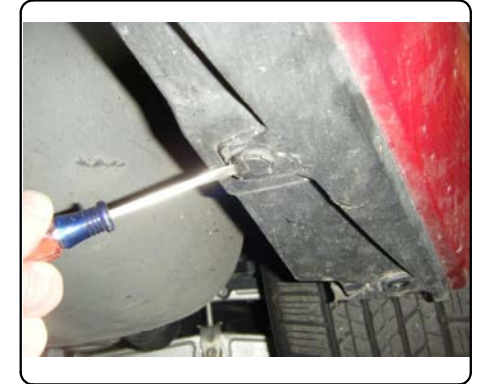
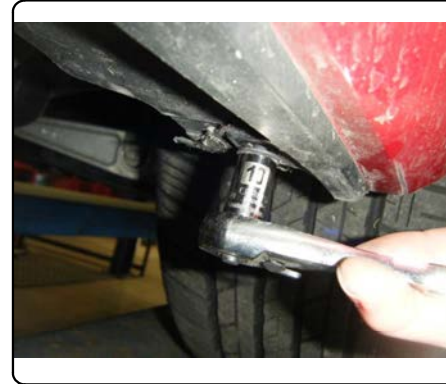
INSTALLATION WALKTHROUGH:



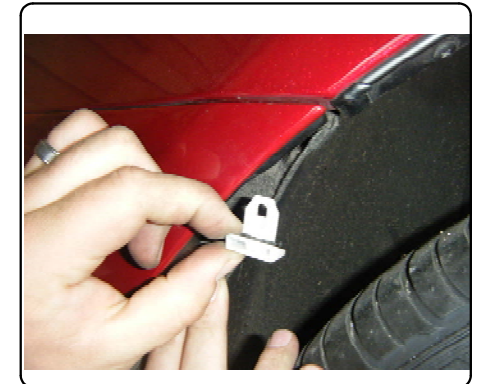
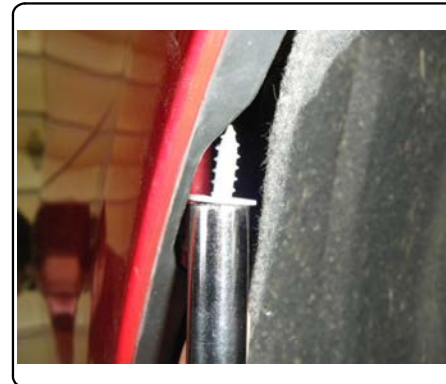
1. Remove underbody panel by removing (5) nuts and (5) push fasteners.



2. Begin bumper cover removal process by removing (1) screw and (1) push fastener from behind rear tire.



3. Remove (1) screw hidden behind the wheel well at the top of the fascia. Remove the plastic clip by prying it out with a flat head screw driver.



INSTALLATION WALKTHROUGH:

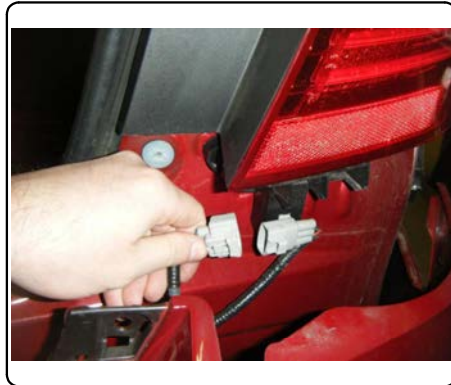
4. Remove small plastic panel between tail light and trunk opening. Remove exposed screw.

Repeat STEPS 2-4 on the other side of the vehicle.



5. Carefully remove bumper cover. Pop sides off first and then pull straight back.

NOTE: Disconnect electrical connector under passenger side tail light.



6. Remove foam and set aside for reinstall later.



7. Remove plastic blocks from bumper beam and set aside for reinstall later.



INSTALLATION WALKTHROUGH:

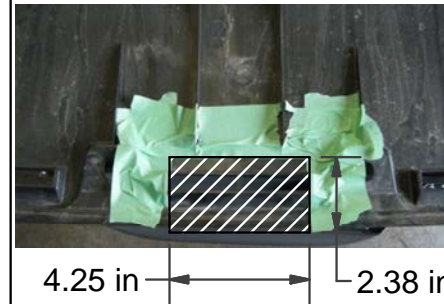
8. Remove bumper beam by removing (8) M8 bolts.



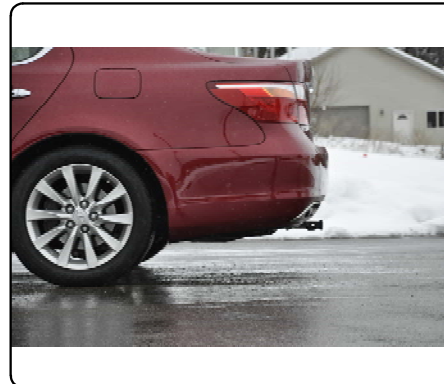
9. Raise hitch and bumper beam into position and secure to the vehicle with the M8 bolts removed in STEP 9. Torque all M8 hardware to 23 ft-lbs.



10. Reinstall bumper cover by reassembling components removed in STEPS 2-7 in reverse order. Trim underbody panel and reinstall.



11. Install is now complete.



12114

2012 LEXUS LS 460

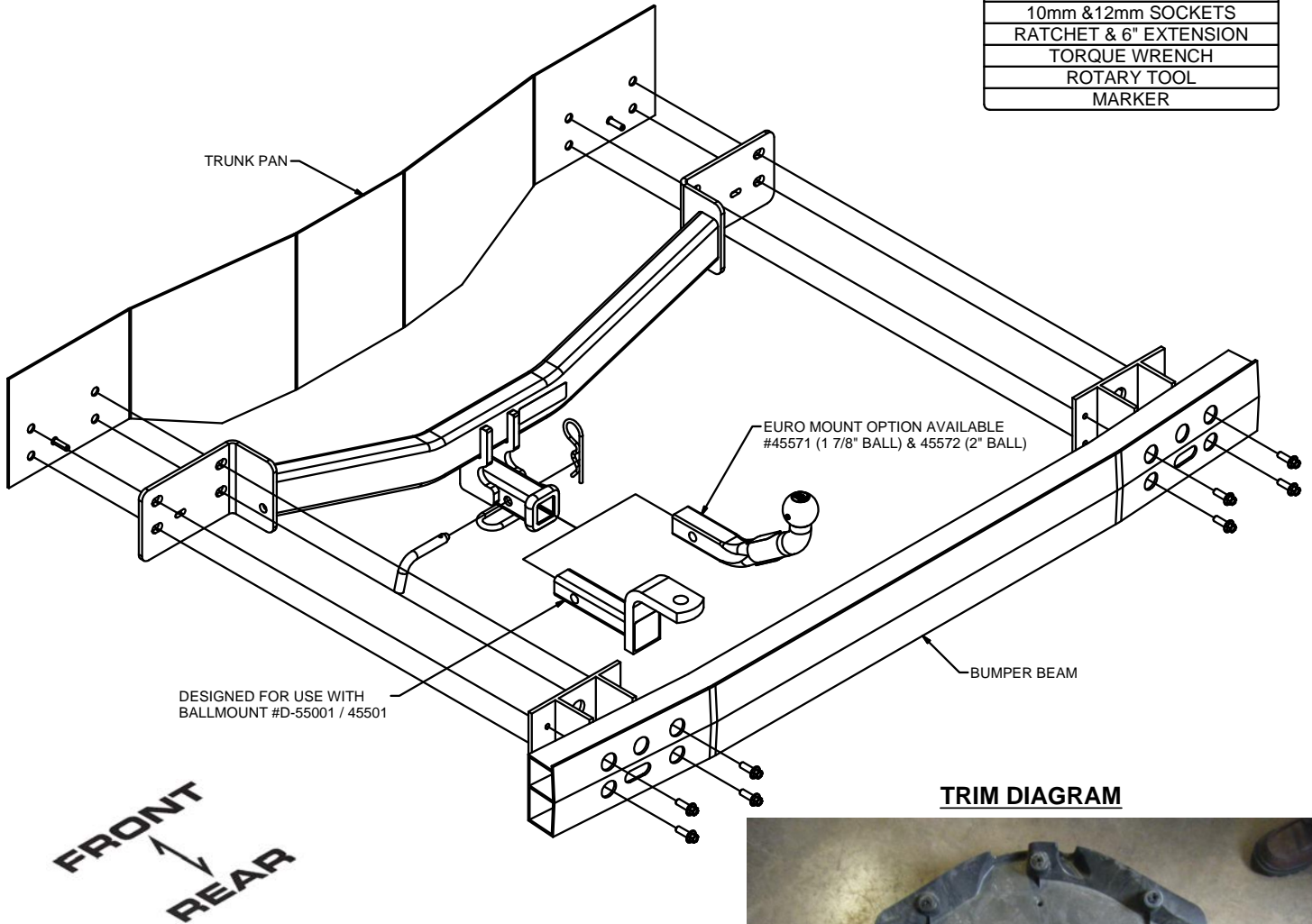
GROSS LOAD CAPACITY WHEN USED AS A WEIGHT CARRYING HITCH: 3500 LBS. TRAILER WEIGHT & 350 LBS. TONGUE WEIGHT.

DO NOT EXCEED VEHICLE MANUFACTURER'S RECOMMENDED TOWING CAPACITY.

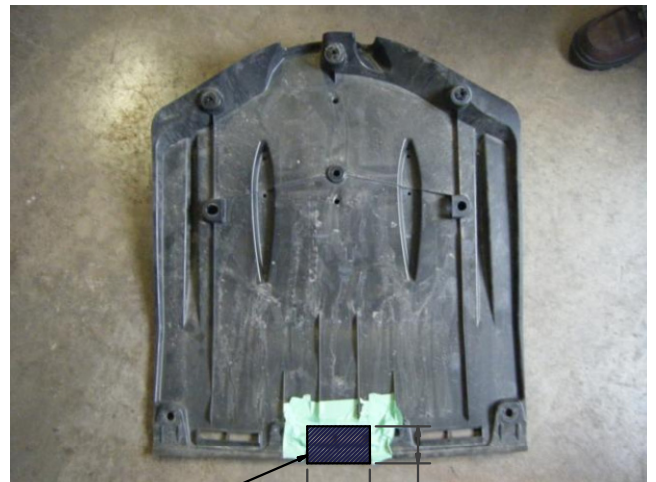
WARNING: ALL NON-TRAILER LOADS APPLIED TO THIS PRODUCT MUST BE SUPPORTED BY 18050 STABILIZING STRAPS.

** FAILURE TO PROPERLY SUPPORT NON-TRAILER LOADS WILL VOID PRODUCT WARRANTY**

TOOLS REQUIRED
FLAT & PHILLIPS SCREW DRIVER
10mm & 12mm SOCKETS
RATCHET & 6" EXTENSION
TORQUE WRENCH
ROTARY TOOL
MARKER



TRIM DIAGRAM



TRIM 4.25 in 2.38 in

HITCH WEIGHT: 22 LBS.
 INSTALL TIME
 PROFESSIONAL: 90 MINUTES
 NOVICE (DIY): 180 MINUTES
 INSTALL NOTES:
 -REMOVE BUMPER
 -TRIM UNDERBODY PANEL
 -NO DRILLING REQUIRED

PERIODICALLY CHECK THIS RECEIVER HITCH TO ENSURE THAT ALL FASTENERS ARE TIGHT AND THAT ALL STRUCTURAL COMPONENTS ARE SOUND.

INSTALLATION STEPS

1. Remove underbody panel by removing (5) nuts and (5) push fasteners.
2. Begin bumper cover removal process by removing (1) screw and (1) push fastener from behind rear tire.
3. Remove (1) screw hidden behind the wheel well at the top of the fascia. Remove the plastic clip by prying it out with a flat head screw driver.
4. Remove small plastic panel between tail light and trunk opening. Remove the exposed screw.
5. Repeat STEPS 2 -4 on the other side of the vehicle.
6. Carefully remove bumper cover. Pop sides off first and then pull straight back.
Note: Disconnect electrical connector under passenger side tail light.
7. Remove foam and set aside for reinstall later.
8. Remove plastic blocks from bumper beam and set aside for reinstall later.
9. Remove bumper beam by removing (8) M8 bolts.
10. Raise hitch and bumper beam into position and secure to the vehicle with the M8 bolts removed in STEP 9.
11. Torque all M8 hardware to 23 ft-lbs.
12. Reinstall bumper cover by reassembling components removed in STEPS 2-8 in reverse order.
13. Trim underbody panel and reinstall. See TRIM DIAGRAM.

PERIODICALLY CHECK THIS RECEIVER HITCH TO ENSURE THAT ALL FASTENERS ARE TIGHT AND THAT ALL STRUCTURAL COMPONENTS ARE SOUND.