



Safety glasses should be worn at all times while installing this product.

YEARS: 2015-PRESENT

MAKE: HONDA

MODEL: FIT

STYLE: HATCHBACK






**WARNING: NEVER EXCEED YOUR VEHICLE MANUFACTURER'S RECOMMENDED TOWING CAPACITY**

**WEIGHT CARRYING:**  
 TRAILER WEIGHT: 2,000 LBS.  
 TONGUE WEIGHT: 200 LBS.

**PRO INSTALL TIME: 15 MIN.**  
**NOVICE INSTALL TIME: 30 MIN.**

IF YOU ARE HESITANT TO UNDERTAKE THIS TASK ON YOUR OWN, CONTACT AN AUTHORIZED CURT INSTALLER FOR ADDITIONAL ASSISTANCE.


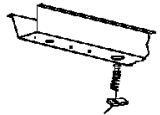

**INSTALLATION REQUIRES:**

 RATCHET	 TORQUE WRENCH	 6" SOCKET EXTENSION
 9/16" 11/16" SOCKET	 SAFETY GLASSES	

**INSTALLATION TIPS:**

- BEFORE YOU BEGIN INSTALLATION, READ ALL INSTRUCTIONS THOROUGHLY.
- TO EASE INSTALLATION, 2 PEOPLE MAY BE REQUIRED.
- USING PROPER TOOLS WILL GREATLY IMPROVE THE QUALITY OF THE INSTALL AND REDUCE THE TIME REQUIRED.

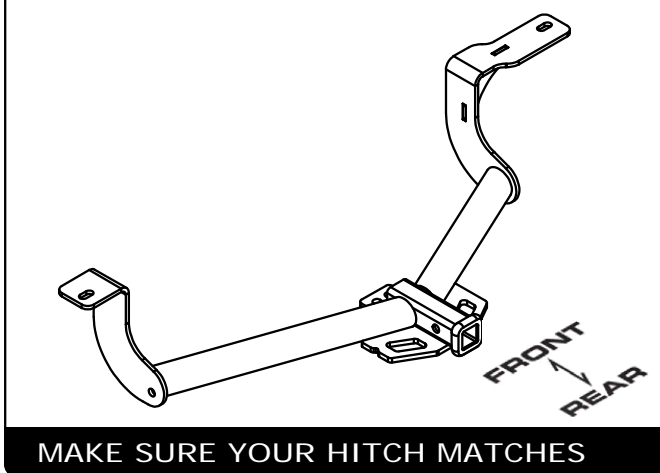
**LEVEL OF DIFFICULTY: EASY**

EASY	MODERATE	CHALLENGING
	- NO DRILLING	
	- FISHWIRE HARDWARE	
	- LOWER EXHAUST	

**VEHICLE PHOTO:**

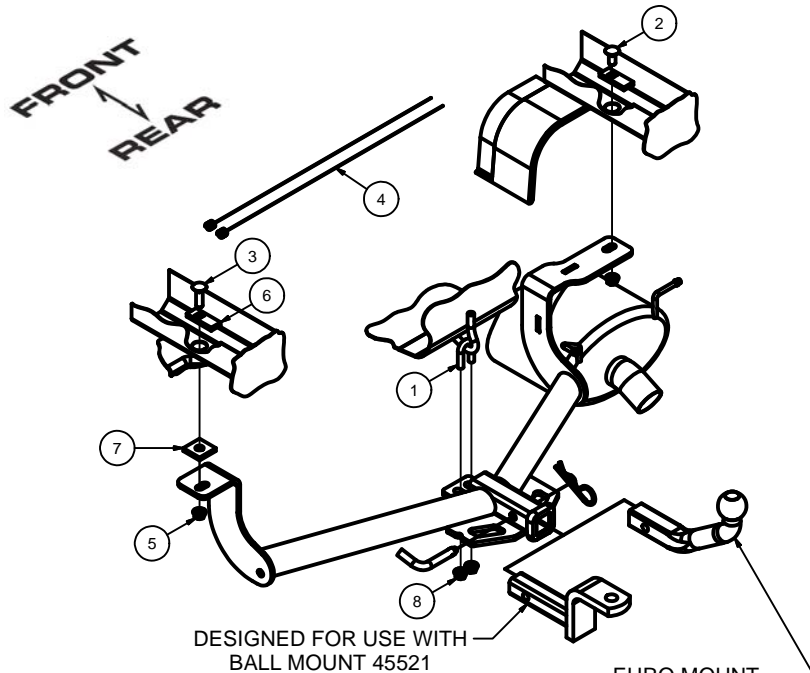


**HITCH ILLUSTRATION:**



## INSTALLATION WALKTHROUGH:

Parts List			
ITEM	QTY	PART NUMBER	DESCRIPTION
1	1	3_8 - 16 x 1.00 x 1.88	U-BOLT
2	1	7/16-14 x 1	CARRIAGE BOLT
3	1	7/16-14 x 1 1/2	CARRIAGE BOLT
4	2	7_16 FISHWIRE	7/16" FISHWIRE
5	2	7/16-14	HEX FLANGE NUT
6	2	CM-SP2	.250 x .88 x 2.25" SQUARE HOLE SPACER
7	1	CM-SP22	.250 x 1.50 x 1.50" ROUND HOLE SPACER
8	2	HFN3816	HEX FLANGE NUT



### RUBBER ISOLATOR REMOVAL DIAGRAM

This technique can be used if an Exhaust Hanger Removal Pliers is not available.

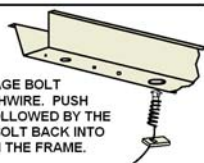
Using a 5/8" open end wrench, slide the wrench up to the rubber isolator, cradling the hanger rod as shown. Next place the flat edge of a pry bar between the wrench and the hanger stop or hanger rod. Then simply rotate the pry bar toward the wrench to remove the rubber isolator.

Note: Using a spray lubricant or soapy water on the hanger rod and the rubber isolator helps removal.

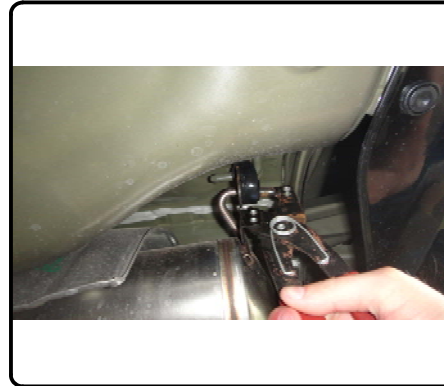


### REVERSE PULL FISHWIRE TECHNIQUE

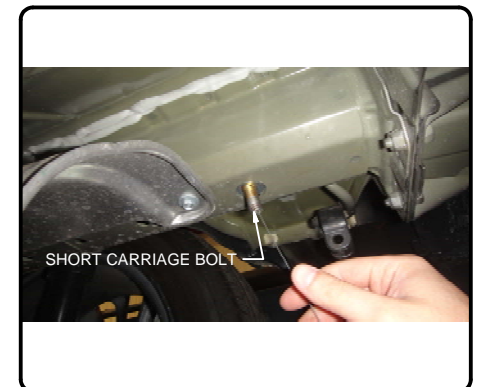
ATTACH FISHWIRE TO CARRIAGE BOLT AND SLIDE SPACER ONTO FISHWIRE. PUSH THE BOLT THRU THE HOLE FOLLOWED BY THE SPACER (AS SHOWN). PULL BOLT BACK INTO POSITION, PROTRUDING FROM THE FRAME.



1. Lower the exhaust by removing the (2) rear-most rubber isolators from the muffler.



2. On the driver side, reverse fishwire a 7/16-14 x 1 1/2" carriage bolt and SP2 spacer through the existing hole. On the passenger side, reverse fishwire a 7/16-14 x 1" carriage bolt and SP2 spacer through the existing hole. **Note:** The longer carriage bolt **must** be installed on the driver side.



## INSTALLATION WALKTHROUGH:

3. Insert the 3/8" U-bolt through the tow loop. Raise hitch into position and loosely secure to the U-bolt using 3/8" flange nuts.



- ↓
4. Place the SP22 spacer on top of the driver side plate and secure hitch to the frame rails using 7/16" flange nuts.



5. Torque all 7/16" hardware to 70 ft-lbs.  
Torque all 3/8" hardware to 45 ft-lbs.  
Raise and secure exhaust back into position.



**INSTALLATION COMPLETE**



11406

HONDA FIT

7/02/2014

GROSS LOAD CAPACITY WHEN USED AS A WEIGHT CARRYING HITCH: 2,000 LBS. TRAILER WEIGHT & 200 LBS. TONGUE WEIGHT.

\*\*\*DO NOT EXCEED VEHICLE MANUFACTURER'S RECOMMENDED TOWING CAPACITY.\*\*\*

WARNING: ALL NON-TRAILER LOADS APPLIED TO THIS PRODUCT MUST BE SUPPORTED BY 18050 STABILIZING STRAPS.

\*\* FAILURE TO PROPERLY SUPPORT NON-TRAILER LOADS WILL VOID PRODUCT WARRANTY\*\*

Parts List			
ITEM	QTY	PART NUMBER	DESCRIPTION
1	1	3_8 - 16 x 1.00 x 1.88	U-BOLT
2	1	7/16-14 x 1	CARRIAGE BOLT
3	1	7/16-14 x 1 1/2	CARRIAGE BOLT
4	2	7_16 FISHWIRE	7/16" FISHWIRE
5	2	7/16-14	HEX FLANGE NUT
6	2	CM-SP2	.250 x .88 x 2.25" SQUARE HOLE SPACER
7	1	CM-SP22	.250 x 1.50 x 1.50" ROUND HOLE SPACER
8	2	HFN3816	HEX FLANGE NUT

REVERSE PULL FISHWIRE TECHNIQUE

ATTACH FISHWIRE TO CARRIAGE BOLT AND SLIDE SPACER ONTO FISHWIRE. PUSH THE BOLT THRU THE HOLE FOLLOWED BY THE SPACER (AS SHOWN). PULL BOLT BACK INTO POSITION, PROTRUDING FROM THE FRAME.

RUBBER ISOLATOR REMOVAL DIAGRAM

This technique can be used if an Exhaust Hanger Removal Pliers is not available.

Using a 5/8" open end wrench, slide the wrench up to the rubber isolator, cradling the hanger rod as shown. Next place the flat edge of a pry bar between the wrench and the hanger stop or hanger rod. Then simply rotate the pry bar toward the wrench to remove the rubber isolator.

Note: Using a spray lubricant or soapy water on the hanger rod and the rubber isolator helps removal.

TOOLS REQUIRED

- RATCHET
- TORQUE WRENCH
- 6" EXTENSION
- 9/16" SOCKET
- 11/16" SOCKET
- SAFETY GLASSES

HITCH WEIGHT: 19 LBS.

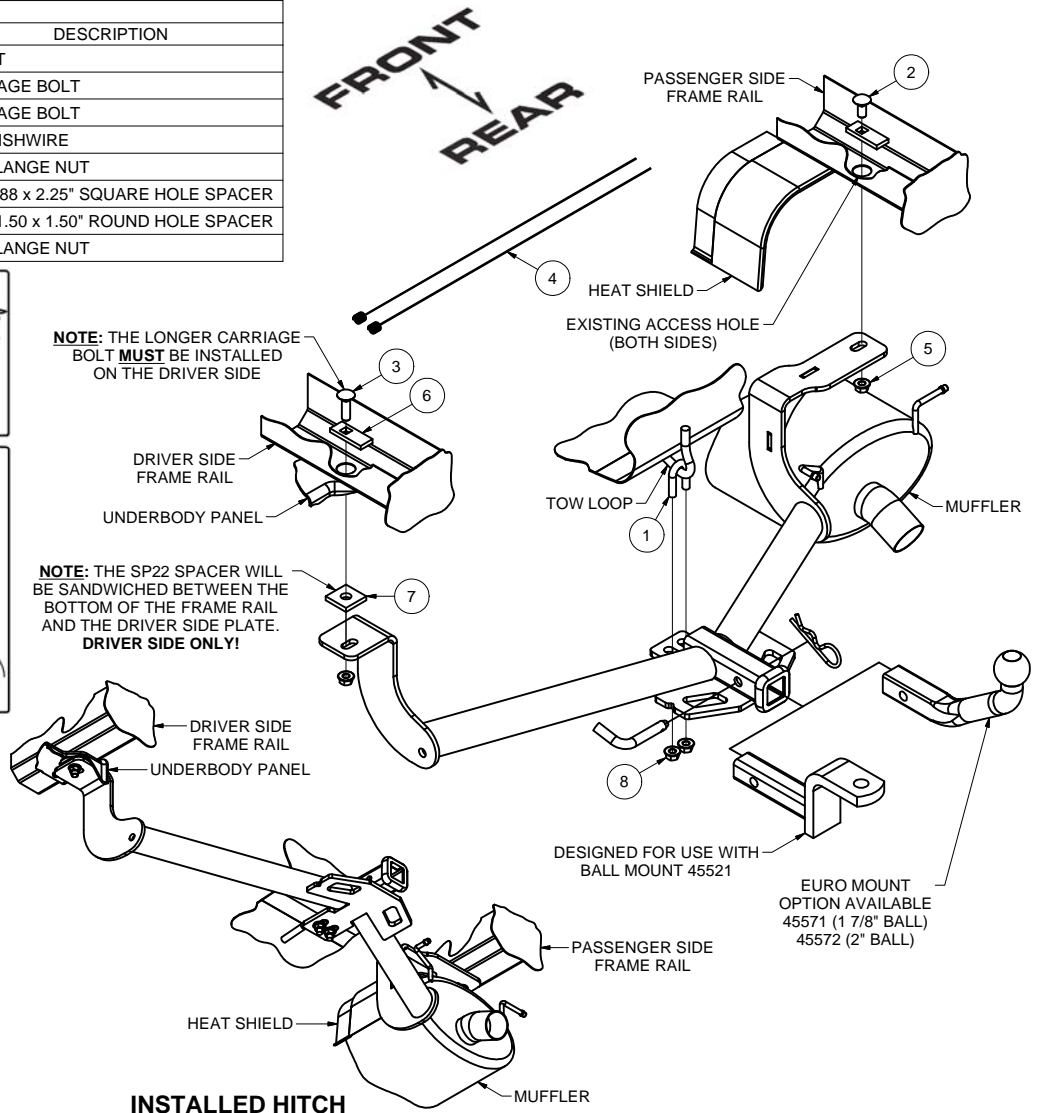
INSTALL TIME

PROFESSIONAL: 15 MINUTES

NOVICE (DIY): 30 MINUTES

INSTALL NOTES:

- NO DRILLING
- FISHWIRE HARDWARE
- LOWER EXHAUST



INSTALLED HITCH

INSTALLATION STEPS

1. Lower the exhaust by removing the (2) rear-most rubber isolators from the muffler. See Rubber Isolator Removal Diagram
2. On the driver side, reverse fishwire a 7/16-14 x 1 1/2" carriage bolt and SP2 spacer through the existing hole. On the passenger side, reverse fishwire a 7/16-14 x 1" carriage bolt and SP2 spacer through the existing hole. **Note:** The longer carriage bolt **must** be installed on the driver side. Leave fishwires attached to prevent loss of hardware inside of frame rail. See Reverse Fishwire Technique Diagram
3. Insert the 3/8" U-bolt through the tow loop, as shown.
4. Raise hitch into position and loosely secure to the U-bolt using 3/8" flange nuts. Place the SP22 spacer on top of the driver side plate and secure hitch to the frame rails using 7/16" flange nuts.
5. Torque all 7/16" hardware to 70 ft-lbs. Torque all 3/8" hardware to 45 ft-lbs.
6. Raise and secure exhaust back into position.

PERIODICALLY CHECK THIS RECEIVER HITCH TO ENSURE THAT ALL FASTENERS ARE TIGHT AND THAT ALL STRUCTURAL COMPONENTS ARE SOUND.