

YEARS: 2014

MAKE: FIAT

MODEL: 500L

STYLE: HATCHBACK

WARNING: NEVER EXCEED YOUR VEHICLE MANUFACTURER'S RECOMMENDED TOWING CAPACITY

WEIGHT CARRYING:
 TRAILER WEIGHT: 2,000 LBS.
 TONGUE WEIGHT: 200 LBS.

PRO INSTALL TIME: 45 MIN.
NOVICE INSTALL TIME: 90 MIN.

IF YOU ARE HESITANT TO UNDERTAKE THIS TASK ON YOUR OWN, CONTACT AN AUTHORIZED CURT INSTALLER FOR ADDITIONAL ASSISTANCE.

INSTALLATION REQUIRES:

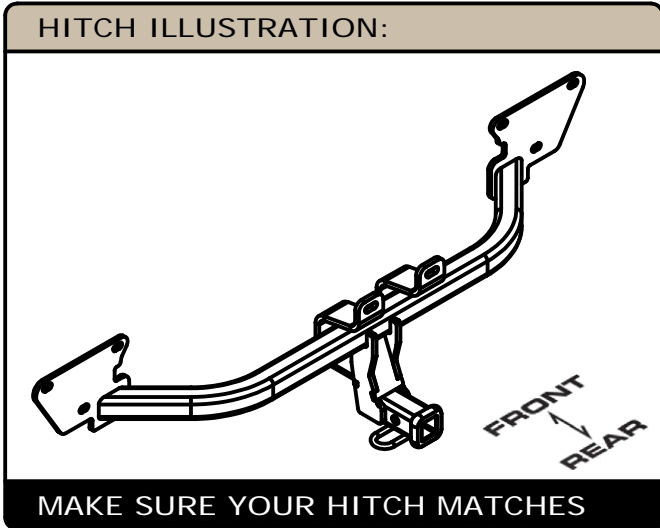
| | | |
|----------------|----------------------------------|------------------------|
| | | |
| SAFETY GLASSES | SCREW DRIVER | T30 TORXBIT SOCKET |
| | | |
| RATCHET | SOCKET 13mm 11mm | SOCKET EXTENSION 9" |
| | | |
| POWER DRILL | DRILL BIT 13/64 | TAPE MEASURE |
| | | |
| MASKING TAPE | AVIATION SHEARS CUT-OFF WHEEL | |

INSTALLATION TIPS:

- BEFORE YOU BEGIN INSTALLATION, READ ALL INSTRUCTIONS THOROUGHLY.
- TO EASE INSTALLATION, 2 PEOPLE MAY BE REQUIRED.
- USING PROPER TOOLS WILL GREATLY IMPROVE THE QUALITY OF THE INSTALL AND REDUCE THE TIME REQUIRED.

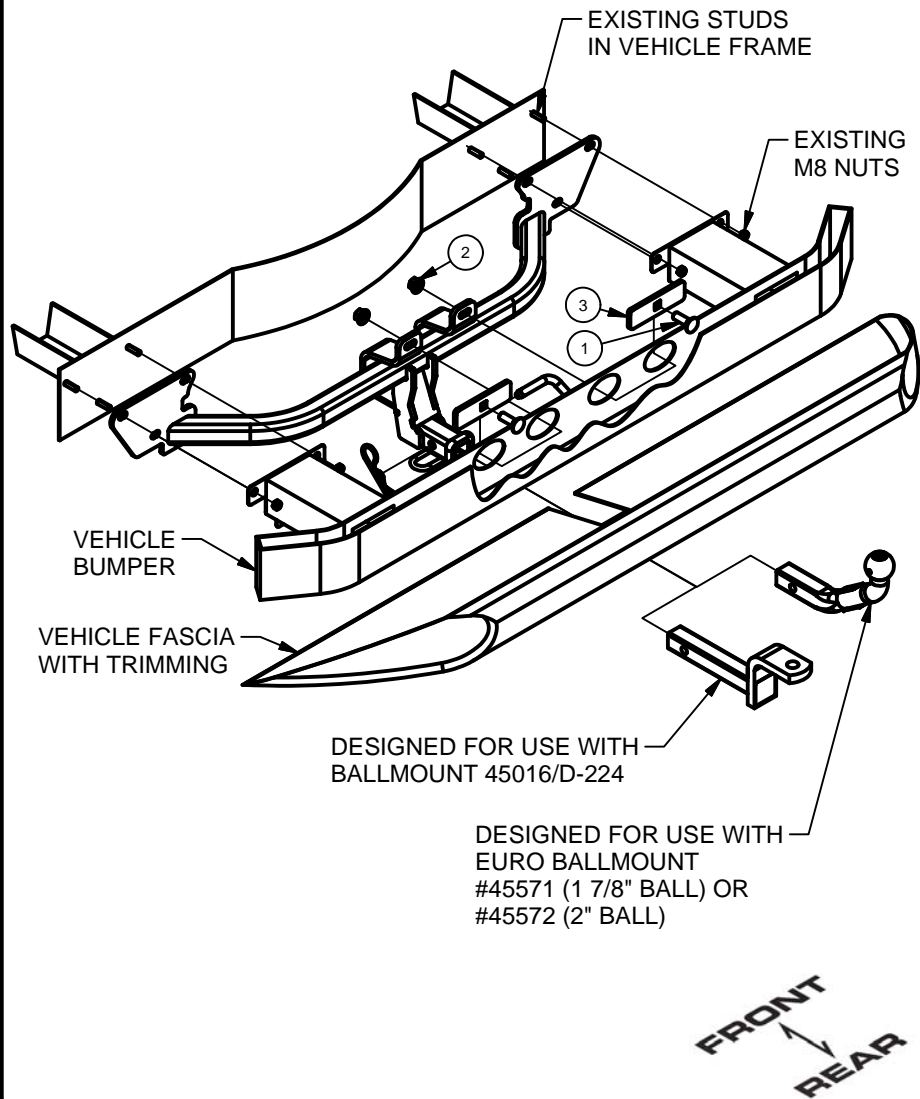
LEVEL OF DIFFICULTY: CHALLENGING

| EASY | MODERATE | CHALLENGING |
|------|------------------------|-------------|
| | DRILLING REQUIRED | |
| | TEMPORARY PART REMOVAL | |
| | FISHWIRING REQUIRED | |
| | FASCIA TRIMMING | |
| | | |

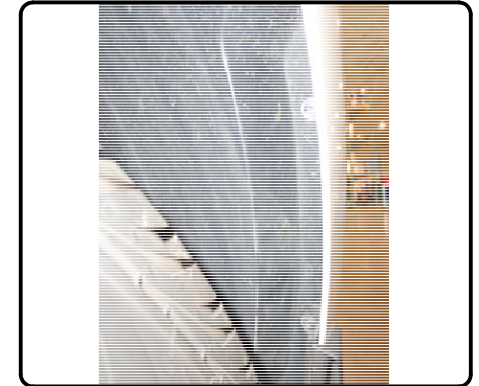


INSTALLATION WALKTHROUGH:

| Parts List | | | |
|------------|-----|---------------------|----------------|
| ITEM | QTY | PART NUMBER | DESCRIPTION |
| 1 | 2 | 1/2-13 x 1 1/2, GR8 | CARRIAGE BOLT |
| 2 | 2 | HFN 1213, GR8 | HEX FLANGE NUT |
| 3 | 2 | 11364-SP | .250" PLATE |



1. Open liftgate to expose rear fascia attachment points. Remove (2) screws and (1) T30 torx bolt from each side under the wheel well. Remove the bottom (3) T30 Torx and (5) phillips screw fascia attachment points. Save hardware for reassembly.



2. Disconnect fascia clips from under taillights to remove fascia. Gently pull fascia away from vehicle, making sure to carefully disconnect electrical connectors during removal. Set aside parts for reassembly.

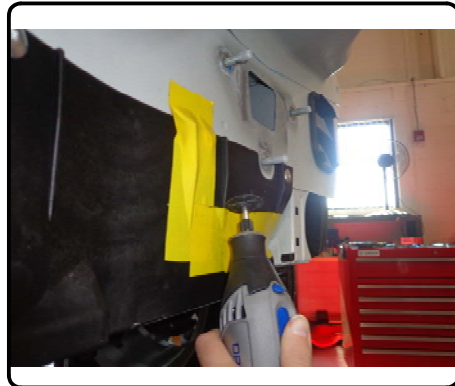


INSTALLATION WALKTHROUGH:

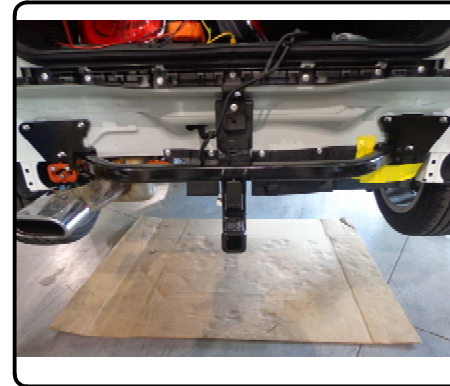
3. Once bumper beam is exposed, remove by loosening (3) M8 nuts from the frame studs on each side of the vehicle. Carefully pull the bumper beam away from the vehicle and disconnect harness attachments, set aside for reassembly.



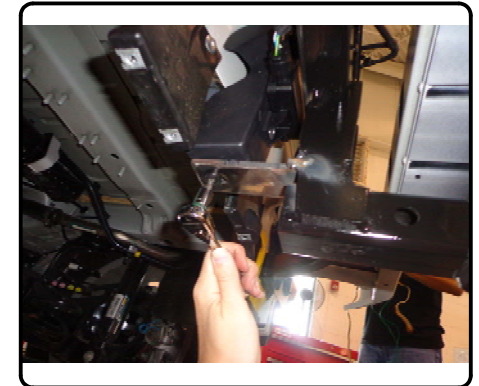
4. Drill out outboard passenger side rivet with 13/64" bit and trim 2 1/2" x 6" plastic area with shears or a rotary tool as shown. This will allow passenger side plate to sit flush when mounted.



5. Raise hitch into position onto the (6) vehicle frame studs. Reposition the vehicle bumper beam onto the hitch, sandwiching the hitch between the frame and the bumper. Tighten existing M8 vehicle hardware back onto mounting studs.



6. Fishwire 1/2" carriage bolts and spacers through bumper access holes and out center support brackets. Tighten 1/2" nuts to secure center support. Locate front mounting plate to secure electrical housing bracket and secure with T30 torx bit that was removed from vehicle in Step. 1.



INSTALLATION WALKTHROUGH:

7. Torque the M8 hardware to 25 ft-lbs.

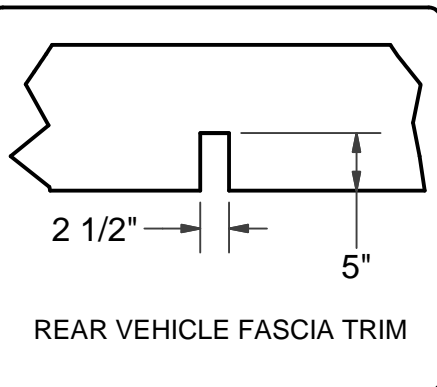
Torque the 1/2" hardware to 110 ft-lbs.



Installation complete



8. Trim approximately 5" x 2 1/2" area at the center of the fascia as shown in the trim diagram. Reassemble the rear fascia by following Steps 1-2 in reverse.
(2 bottom fascia mounting locations will now have been removed due to trim areas)



11364

FIAT 500L

GROSS LOAD CAPACITY WHEN USED AS A WEIGHT CARRYING HITCH: 2,000 LBS. TRAILER WEIGHT & 200 LBS. TONGUE WEIGHT.

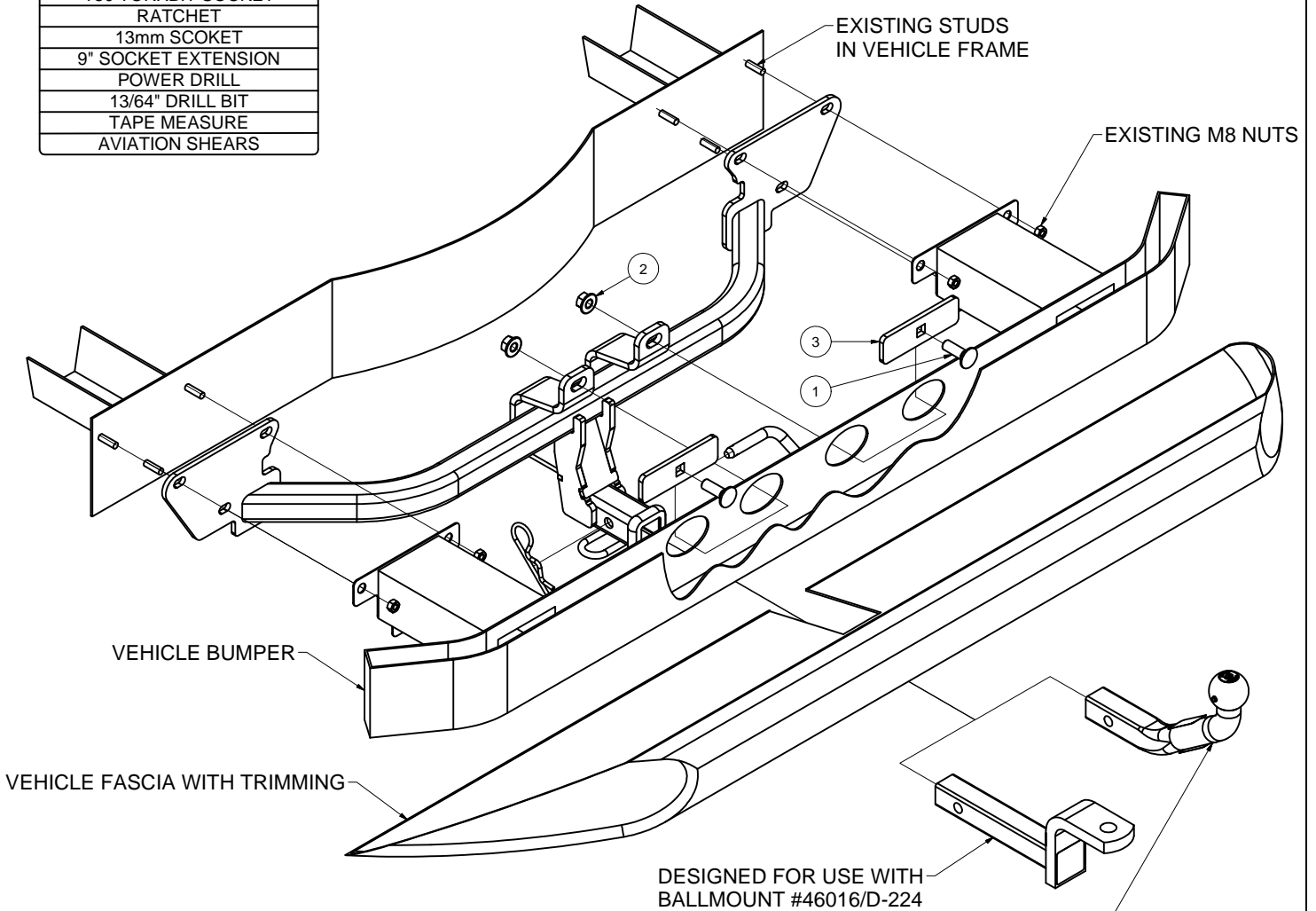
DO NOT EXCEED VEHICLE MANUFACTURER'S RECOMMENDED TOWING CAPACITY.

WARNING: ALL NON-TRAILER LOADS APPLIED TO THIS PRODUCT MUST BE SUPPORTED BY 18050 STABILIZING STRAPS.

** FAILURE TO PROPERLY SUPPORT NON-TRAILER LOADS WILL VOID PRODUCT WARRANTY**

| Parts List | | | |
|------------|-----|---------------------|----------------|
| ITEM | QTY | PART NUMBER | DESCRIPTION |
| 1 | 2 | 1/2-13 x 1 1/2, GR8 | CARRIAGE BOLT |
| 2 | 2 | HFN 1213, GR8 | HEX FLANGE NUT |

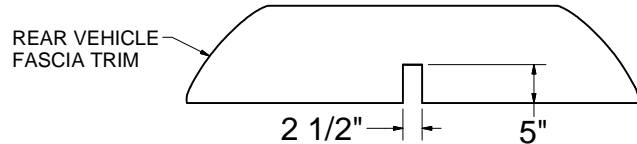
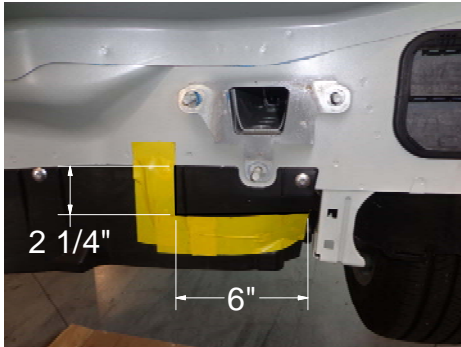
| TOOLS REQUIRED |
|---------------------|
| SCREWDRIVER |
| T30 TORXBIT SOCKET |
| RATCHET |
| 13mm SOCKET |
| 9" SOCKET EXTENSION |
| POWER DRILL |
| 13/64" DRILL BIT |
| TAPE MEASURE |
| AVIATION SHEARS |



HITCH WEIGHT: .30 LBS.
INSTALL TIME
 PROFESSIONAL: 45 MINUTES
 NOVICE (DIY): 90 MINUTES
INSTALL NOTES:
 - DRILLING REQUIRED
 - PART REMOVAL
 - FASCIA TRIMMING



PERIODICALLY CHECK THIS RECEIVER HITCH TO ENSURE THAT ALL FASTENERS ARE TIGHT AND THAT ALL STRUCTURAL COMPONENTS ARE SOUND.



INSTALLATION STEPS

1. Open liftgate to expose rear fascia attachment points. Remove (2) screws and (1) T30 torx bolt from each side under the wheel well. Remove the bottom (3) T30 Torx and (5) phillips screw fascia attachment points. Save hardware for reassembly.
2. Disconnect fascia clips from under taillights to remove fascia. Gently pull fascia away from vehicle, making sure to carefully disconnect electrical connectors during removal. Set aside parts for reassembly.
3. Once bumper beam is exposed, remove by loosening (3) M8 nuts from the frame studs on each side of the vehicle. Carefully pull the bumper beam away from the vehicle and disconnect harness attachments, set aside for reassembly.
4. Drill out outboard passenger side rivet with 13/64" bit and trim 2 1/2" x 6" plastic area with shears or a rotary tool. This will allow passenger side plate to sit flush when mounted.
5. Raise hitch into position onto the (6) vehicle frame studs. Reposition the vehicle bumper beam onto the hitch, sandwiching the hitch between the frame and the bumper. Tighten existing M8 vehicle hardware back onto mounting studs.
6. Fishwire 1/2" carriage bolts and spacers through bumper access holes and out center support brackets. Tighten 1/2" nuts to secure center support. Locate front mounting plate to secure electrical housing bracket and secure with T30 torx bit that was removed from vehicle in Step. 1.
7. Torque the M8 hardware to 25 ft-lbs. Torque the 1/2" hardware to 110 ft-lbs.
8. Trim about a 5" x 2 1/2" cutout at the center of the fascia for receiver tube clearance. Reassemble the rear fascia by following Steps 1-2 in reverse (2 bottom fascia mounting locations will now have been removed due to trim areas)

PERIODICALLY CHECK THIS RECEIVER HITCH TO ENSURE THAT ALL FASTENERS ARE TIGHT AND THAT ALL STRUCTURAL COMPONENTS ARE SOUND.