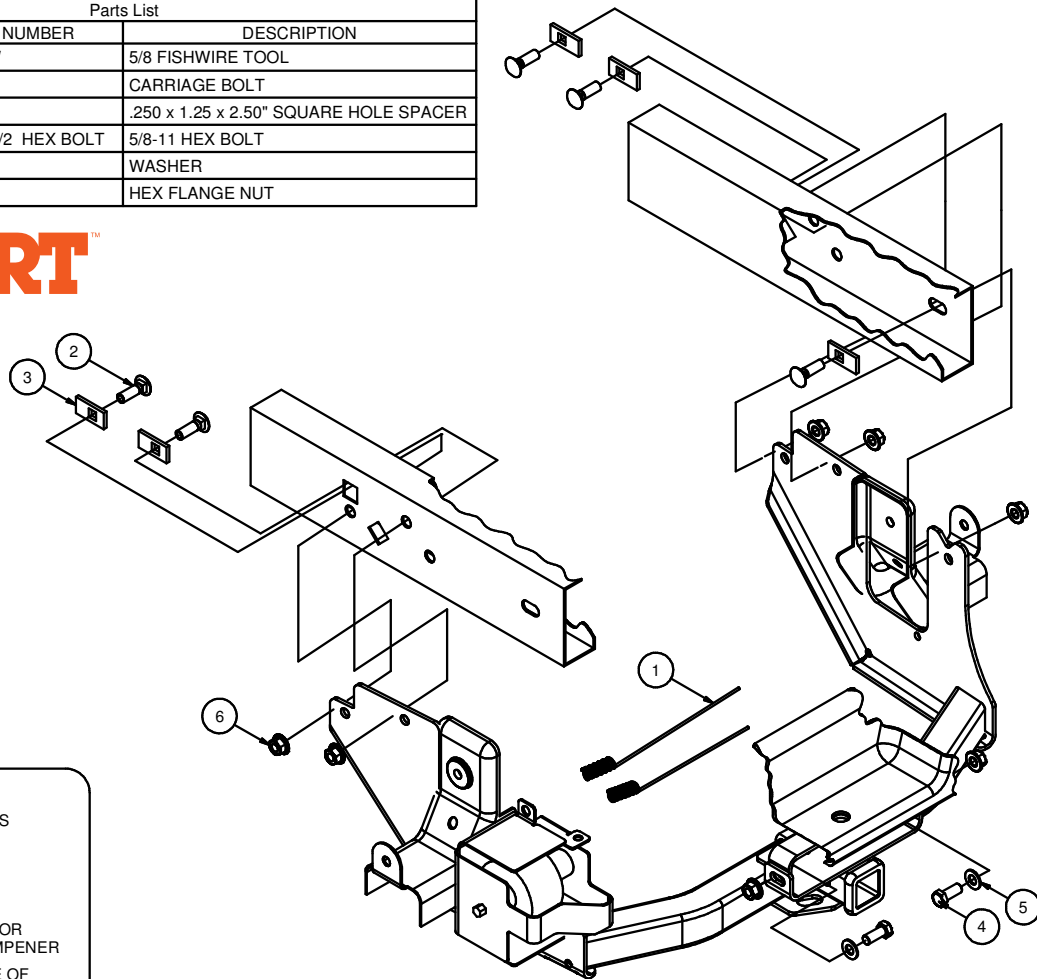


**13357 / RRH13357****04-05 FORD F-150**

GROSS LOAD CAPACITY WHEN USED AS A WEIGHT CARRYING HITCH: 6,000 LBS. TRAILER WEIGHT & 600 LBS. TONGUE WEIGHT.  
 GROSS LOAD CAPACITY WHEN USED AS A WEIGHT DISTRIBUTION HITCH: 10,000 LBS. TRAILER WEIGHT & 1,000 LBS. TONGUE WEIGHT.

**\*\*\*DO NOT EXCEED VEHICLE MANUFACTURER'S RECOMMENDED TOWING CAPACITY.\*\*\***

Parts List			
ITEM	QTY	PART NUMBER	DESCRIPTION
1	2	CM-625-FW	5/8 FISHWIRE TOOL
2	5	5/8-11 x 2	CARRIAGE BOLT
3	5	CM-SP9	.250 x 1.25 x 2.50" SQUARE HOLE SPACER
4	2	5/8-11 x 1 1/2 HEX BOLT	5/8-11 HEX BOLT
5	2	5/8	WASHER
6	7	5/8-11	HEX FLANGE NUT



HITCH WEIGHT: 54 LBS.  
 INSTALL TIME: 30 MINUTES  
 INSTALL NOTES:  
 - NO DRILLING REQUIRED  
 - FISHWIRE HARDWARE  
 - WILL FIT VEHICLES WITH OR WITHOUT VIBRATION DAMPENER  
 - LOWER SPARE FOR EASE OF INSTALLATION

### INSTALLATION STEPS

- 1) Lower exhaust for ease of installation by removing exhaust hanger from frame.
- 2) Raise hitch into position and insert 5/8" hex bolts and washers through factory chain loop holes and holes in top plate of hitch. Secure with 5/8" flange nuts as shown, finger tighten.
- 3) Install 5/8" carriage bolt and spacer into rearmost hole on passenger side frame rail and hitch side plate. Secure with 5/8" flange nut, finger tighten.
- 4) Fishwire remaining 5/8" carriage bolts and spacers through square access holes in frame rails. Pull bolts through holes in frame and out hitch side plate mounting holes, as shown. Secure with 5/8" flange nuts.
- 5) Torque all 5/8" fasteners to 210 lb.-ft.
- 6) Reinstall exhaust lowered in Step 1.

**PERIODICALLY CHECK THIS RECEIVER HITCH TO ENSURE THAT ALL FASTENERS ARE TIGHT AND THAT ALL STRUCTURAL COMPONENTS ARE SOUND.**