

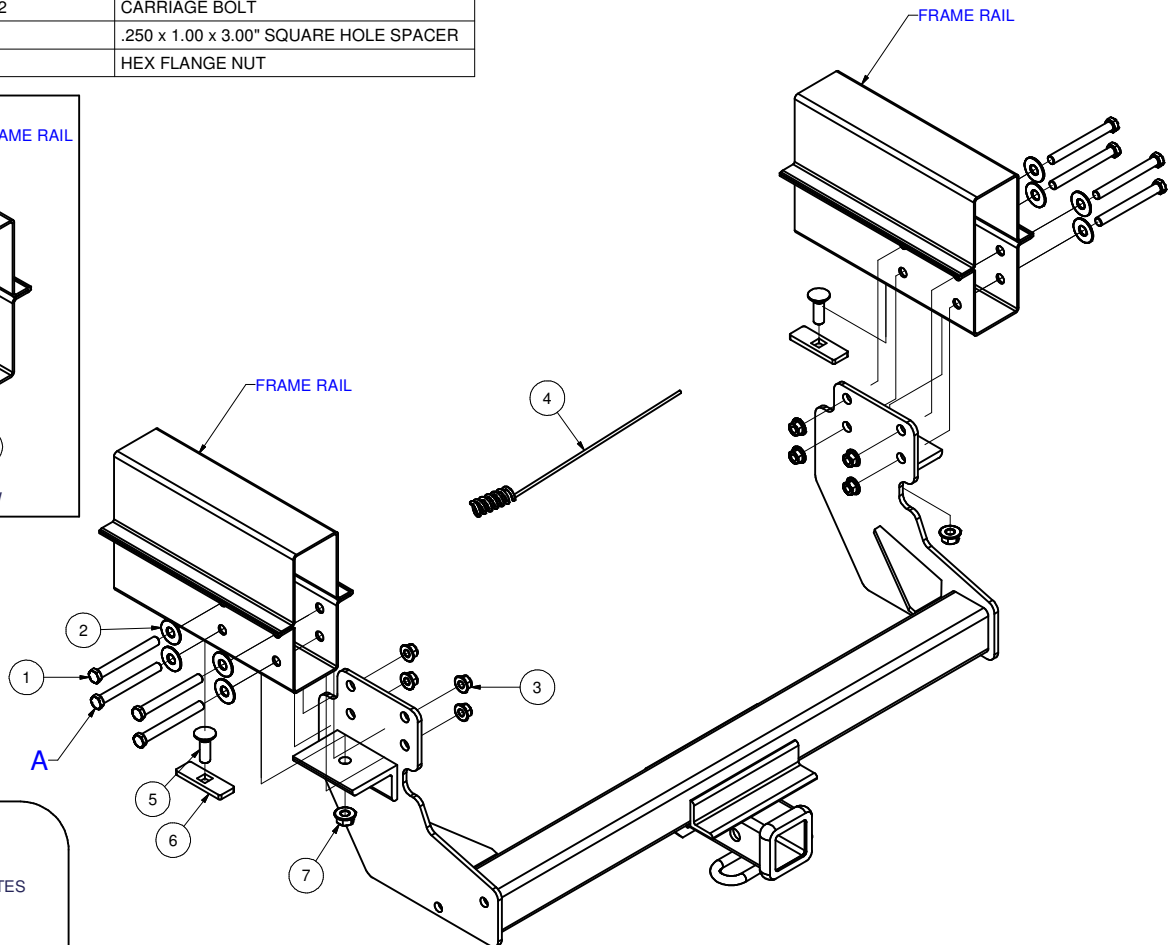
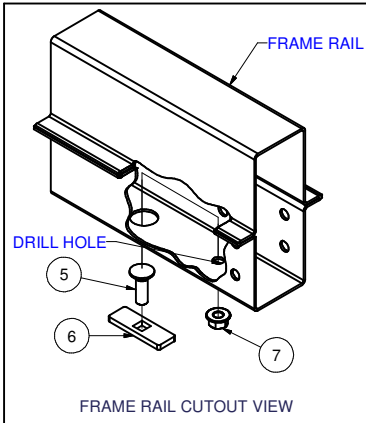
13275

DODGE SPRINTER (CAB & CHASSIS) 170" WB

GROSS LOAD CAPACITY WHEN USED AS A WEIGHT CARRYING HITCH: 6,000 LBS. TRAILER WEIGHT & 600 LBS. TONGUE WEIGHT.
 GROSS LOAD CAPACITY WHEN USED AS A WEIGHT DISTRIBUTION HITCH: 10,000 LBS. TRAILER WEIGHT & 1,000 LBS. TONGUE WEIGHT

DO NOT EXCEED VEHICLE MANUFACTURER'S RECOMMENDED TOWING CAPACITY.

1	8	7_16 - 14 x 4	HEX BOLT
2	8	7/16 WASHER	WASHER
3	8	7/16-14	HEX FLANGE NUT
4	1	1/2"	FISHWIRE TOOL
5	2	1/2-13 x 1 1/2	CARRIAGE BOLT
6	2	CM-SP6	.250 x 1.00 x 3.00" SQUARE HOLE SPACER
7	2	HFN 1213	HEX FLANGE NUT



HITCH WEIGHT: 42 LBS.

INSTALL TIME: 30 MINUTES

INSTALL NOTES:

- DRILLING REQUIRED
- FISHWIRING REQUIRED

INSTALLATION STEPS

- 1) [Raise hitch](#) into position aligning holes.
- 2) Secure to frame using hardware supplied with the exception of bottom front most bolts (A).(TYPICAL BOTH SIDES)
- 3) Using hitch as template, drill holes into bottom of frame.
- 4) Fishwire spacer and carriage bolt through frame.
- 5) Install remaining hardware.
- 6) Torque all 7/16" hardware to 70 lb-ft. and all 1/2" hardware to 110 lb-ft.



PERIODICALLY CHECK THIS RECEIVER HITCH TO ENSURE THAT ALL FASTENERS ARE TIGHT AND THAT ALL STRUCTURAL COMPONENTS ARE SOUND.