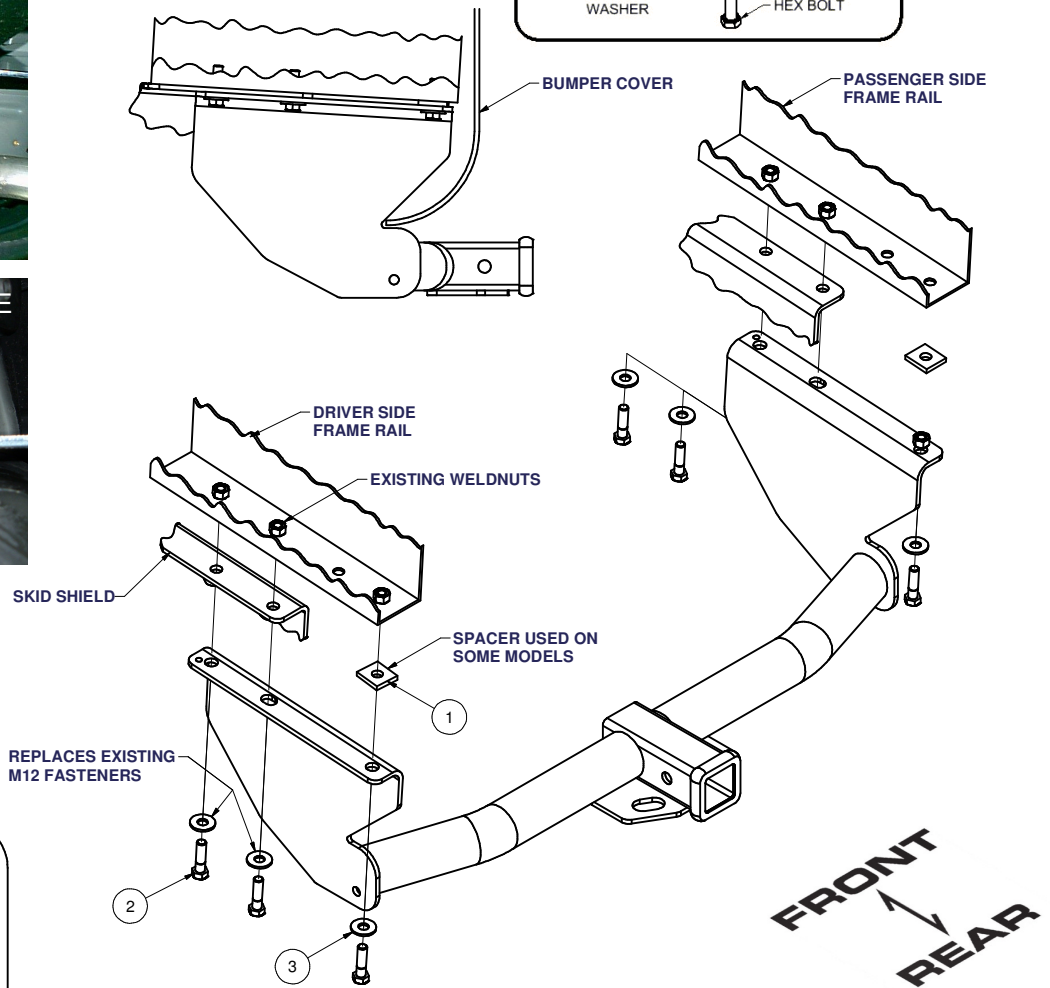
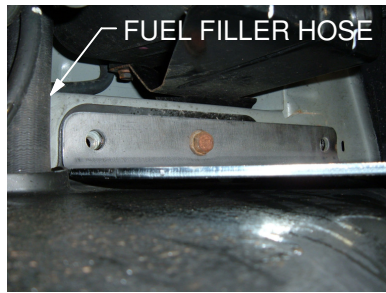
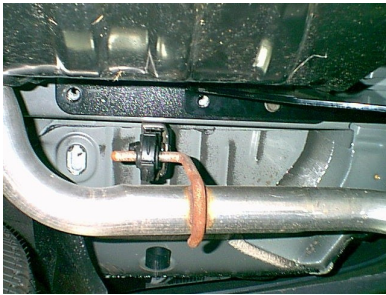
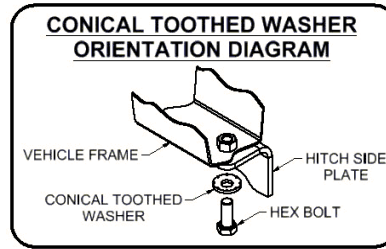


13051 / 78139 / RRH13051

99-04 JEEP GRAND CHEROKEE

GROSS LOAD CAPACITY WHEN USED AS A WEIGHT CARRYING HITCH: 5,000 LBS. TRAILER WEIGHT & 500 LBS. TONGUE WEIGHT.
 GROSS LOAD CAPACITY WHEN USED AS A WEIGHT DISTRIBUTION HITCH: 6,000 LBS. TRAILER WEIGHT & 600 LBS. TONGUE WEIGHT
*****DO NOT EXCEED VEHICLE MANUFACTURER'S RECOMMENDED TOWING CAPACITY.*****

Parts List			
ITEM	QTY	PART NUMBER	DESCRIPTION
1	2	CM-SP25	.250 x 1.38 x 1.50" ROUND HOLE SPACER
2	6	M12-1.75 x 45mm	HEX BOLT
3	6	1/2"	CONICAL TOOTHED WASHER



REPLACES EXISTING M12 FASTENERS

HITCH WEIGHT: 30 LBS.
 INSTALL TIME: 38 MINUTES
 INSTALL NOTES:
 - NO DRILLING REQUIRED

INSTALLATION STEPS

- 1) Remove tow hook if present. Remove the four rearmost M12 fasteners from the vehicle frame leaving the skid shield in place.
- 2) Raise hitch into position and loosely reinstall the four M12 Fasteners that were removed in step 2.
- 3) Place spacers between the frame and hitch before installing the supplied M12 hex bolts and conical washers as shown. Spacers are not required on vehicles equipped with skid shield supports. Remove the support bolts to install hitch.
- 4) With spacers or support bars between hitch and frame Torque all Fasteners to 79 lb.-ft.

PERIODICALLY CHECK THIS RECEIVER HITCH TO ENSURE THAT ALL FASTENERS ARE TIGHT AND THAT ALL STRUCTURAL COMPONENTS ARE SOUND.