

12225

97.5-08 BUICK REGAL, PONTIAC GRAND PRIX

INCLUDING GT AND GTP

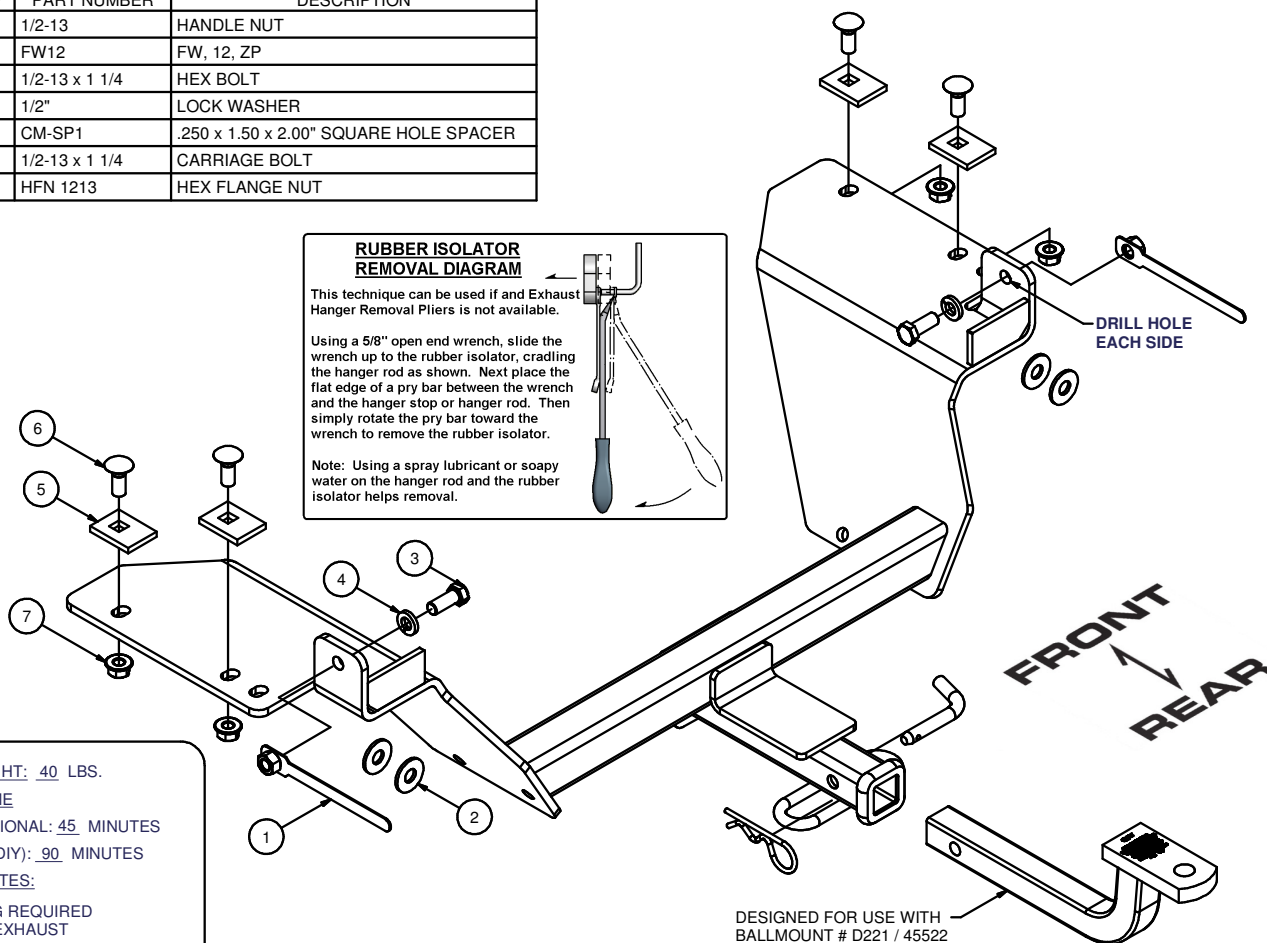
GROSS LOAD CAPACITY WHEN USED AS A WEIGHT CARRYING HITCH: 3500 LBS. TRAILER WEIGHT & 350 LBS. TONGUE WEIGHT.

DO NOT EXCEED VEHICLE MANUFACTURER'S RECOMMENDED TOWING CAPACITY.

WARNING: ALL NON-TRAILER LOADS APPLIED TO THIS PRODUCT MUST BE SUPPORTED BY AUXILIARY STABILIZING STRAPS.

** FAILURE TO PROPERLY SUPPORT NON-TRAILER LOADS WILL VOID PRODUCT WARRANTY**

Parts List			
ITEM	QTY	PART NUMBER	DESCRIPTION
1	2	1/2-13	HANDLE NUT
2	4	FW12	FW, 12, ZP
3	2	1/2-13 x 1 1/4	HEX BOLT
4	2	1/2"	LOCK WASHER
5	4	CM-SP1	.250 x 1.50 x 2.00" SQUARE HOLE SPACER
6	4	1/2-13 x 1 1/4	CARRIAGE BOLT
7	4	HFN 1213	HEX FLANGE NUT



HITCH WEIGHT: 40 LBS.

INSTALL TIME

PROFESSIONAL: 45 MINUTES

NOVICE (DIY): 90 MINUTES

INSTALL NOTES:

- DRILLING REQUIRED
- LOWER EXHAUST

DESIGNED FOR USE WITH BALLMOUNT # D221 / 45522

INSTALLATION STEPS

- 1) Detach (5) rubber exhaust hangers and lower rearward portion of exhaust system.
- 2) Insert carriage bolts and blocks in frame rails through access hole.
- 3) Raise hitch into position and check side to side clearance with frame. Tape 1/2" washers to hitch as necessary to eliminate gap.
- 4) Raise hitch in to position and attach with carriage bolts as shown.
- 5) Using hitch as a template, drill two holes in side of frame rails.
- 6) Insert hex bolt and lock washer through side of frame rail and secure with handle nut inserted through end of frame rail.
- 7) Reinstall exhaust system.
- 8) Torque all 1/2" fasteners to 110 lb.-ft.

PERIODICALLY CHECK THIS RECEIVER HITCH TO ENSURE THAT ALL FASTENERS ARE TIGHT AND THAT ALL STRUCTURAL COMPONENTS ARE SOUND.

