

12112

MAZDA CX-9

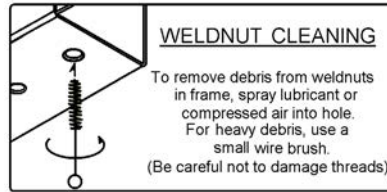
GROSS LOAD CAPACITY WHEN USED AS A WEIGHT CARRYING HITCH: 3500 LBS. TRAILER WEIGHT & 350 LBS. TONGUE WEIGHT.

\*\*\*DO NOT EXCEED VEHICLE MANUFACTURER'S RECOMMENDED TOWING CAPACITY.\*\*\*

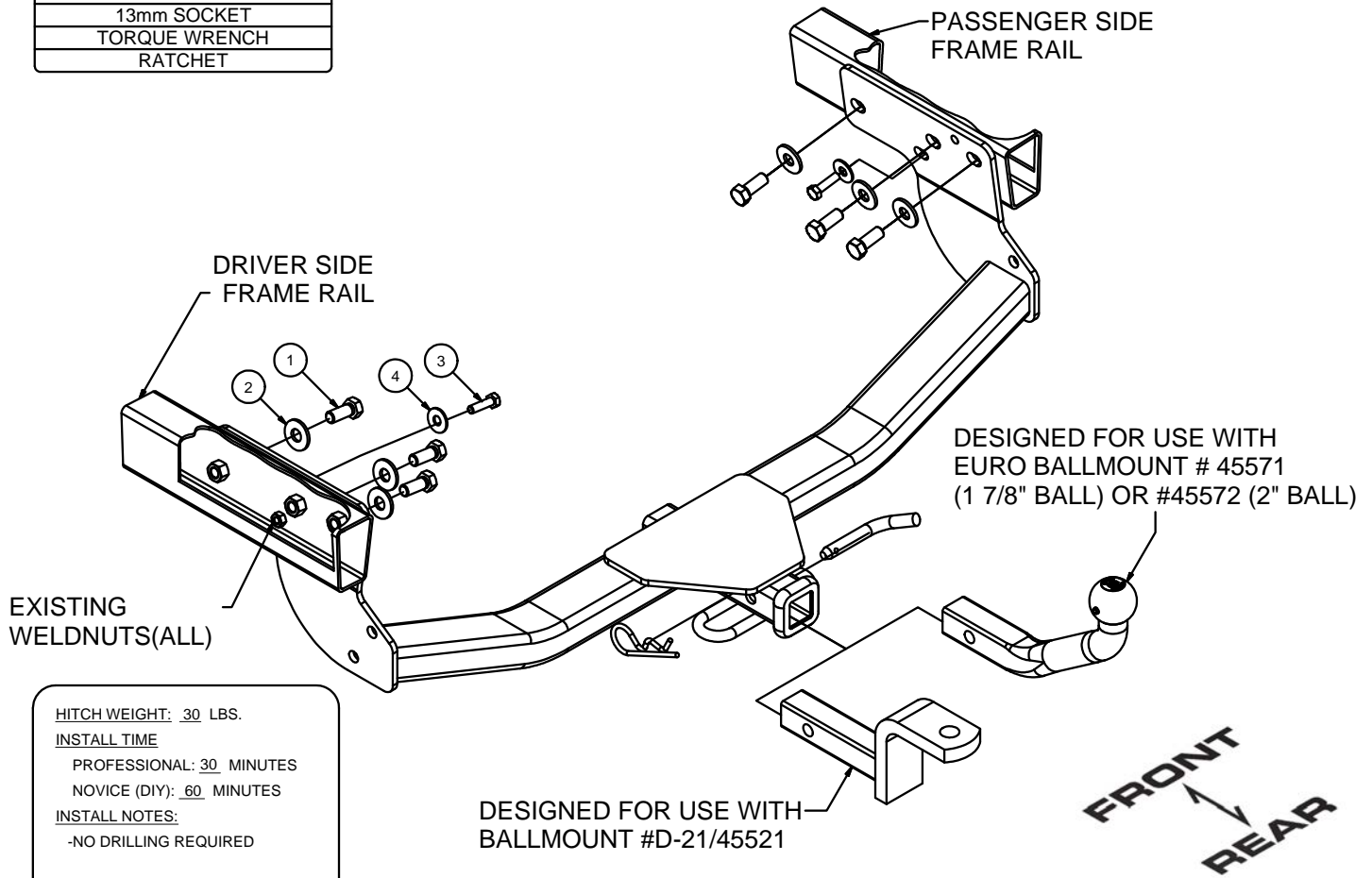
WARNING: ALL NON-TRAILER LOADS APPLIED TO THIS PRODUCT MUST BE SUPPORTED BY 18050 STABILIZING STRAPS.

\*\* FAILURE TO PROPERLY SUPPORT NON-TRAILER LOADS WILL VOID PRODUCT WARRANTY\*\*

Parts List			
ITEM	QTY	PART NUMBER	DESCRIPTION
1	6	M12-1.25 x 30mm	HEX BOLT
2	6	1/2"	CONICAL TOOTHED WASHER
3	2	M8 - 1.25 x 30 HEX BOLT	HEX HEAD BOLT
4	2	3/8"	CONICAL TOOTHED WASHER



TOOLS REQUIRED	
19mm	SOCKET
13mm	SOCKET
TORQUE	WRENCH
RATCHET	



HITCH WEIGHT: 30 LBS.  
 INSTALL TIME  
 PROFESSIONAL: 30 MINUTES  
 NOVICE (DIY): 60 MINUTES  
 INSTALL NOTES:  
 -NO DRILLING REQUIRED

DESIGNED FOR USE WITH BALLMOUNT #D-21/45521



**INSTALLATION STEPS**

- 1) Raise hitch into position.
- 2) Attach, finger tight, with (3) M12 hex bolts and 1/2" conical toothed washers and (1) M8 hex bolt with a 3/8" conical washer per side.
- 3) Torque all M12 hardware to 86 ft-lb and all M8 hardware to 23 ft-lb.

PERIODICALLY CHECK THIS RECEIVER HITCH TO ENSURE THAT ALL FASTENERS ARE TIGHT AND THAT ALL STRUCTURAL COMPONENTS ARE SOUND.



The **FIRST** Name in Towing Products™

Trailer Hitches