

11138

PONTIAC G8, CHEVROLET SS & CAPRICE PPV

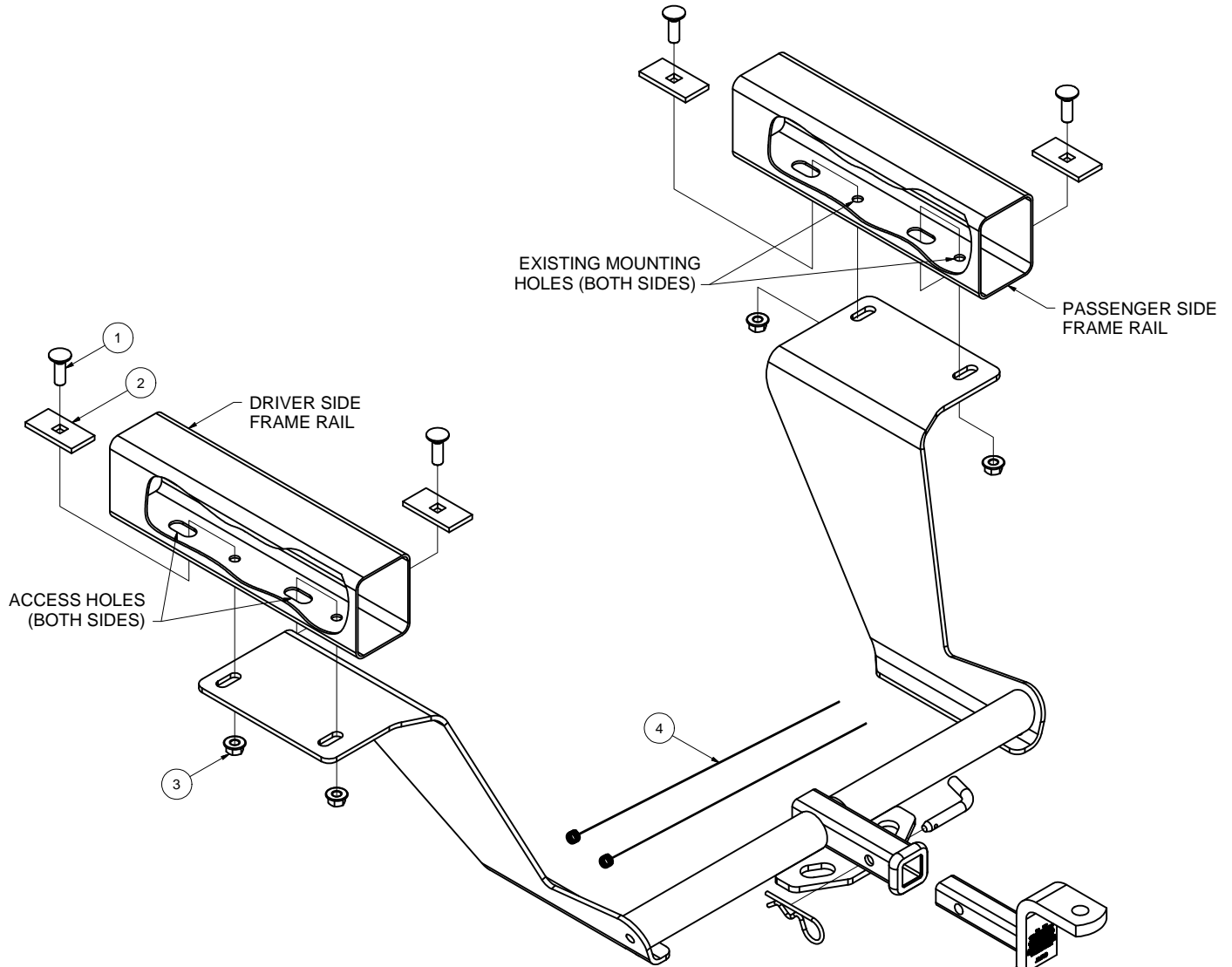
GROSS LOAD CAPACITY WHEN USED AS A WEIGHT CARRYING HITCH: 2,000 LBS. TRAILER WEIGHT & 200 LBS. TONGUE WEIGHT.

DO NOT EXCEED VEHICLE MANUFACTURER'S RECOMMENDED TOWING CAPACITY.

WARNING: ALL NON-TRAILER LOADS APPLIED TO THIS PRODUCT MUST BE SUPPORTED BY AUXILIARY STABILIZING STRAPS.

** FAILURE TO PROPERLY SUPPORT NON-TRAILER LOADS WILL VOID PRODUCT WARRANTY**

Parts List			
ITEM	QTY	PART NUMBER	DESCRIPTION
1	4	1/2-13 x 1 1/2	CARRIAGE BOLT
2	4	CM-SP4	.250 x 1.50 x 3.00" SQUARE HOLE SPACER
3	4	HFN 1213	HEX FLANGE NUT
4	2	1_2 FISHWIRE	1/2" FISHWIRE



HITCH WEIGHT: .38 LBS.
 INSTALL TIME
 PROFESSIONAL: 60 MINUTES
 NOVICE (DIY): 120 MINUTES
 INSTALL NOTES:
 -FISHWIRING REQUIRED
 -LOWER EXHAUST
 -MODIFY HEAT SHIELD
 -REMOVE EXHAUST HANGER BRACKET

FRONT
 ↓
 REAR

PERIODICALLY CHECK THIS RECEIVER HITCH TO ENSURE THAT ALL FASTENERS ARE TIGHT AND THAT ALL STRUCTURAL COMPONENTS ARE SOUND.

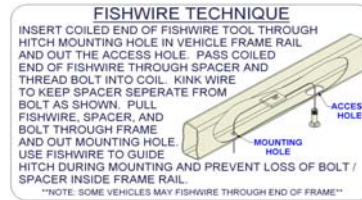
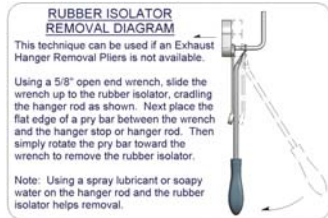


The FIRST Name in Towing Products™

Trailer Hitches

TOOLS REQUIRED

3/4", 10, 13 & 15mm SOCKETS
10" EXTENSION
RATCHET
TORQUE WRENCH
ROTARY TOOL
CARBIDE BIT
CAR RAMPS

**INSTALLATION STEPS**

Note: The receiver tube must pivot below ground level for hitch installation.

- 1) Lower the exhaust by removing the (2) rubber isolators and the (4) fasteners retaining the rear most isolator bracket mounts. (Refer to rubber isolator removal diagram above.)
- 2) Remove the (4) fasteners retaining the frame crossmember and (8) fasteners retaining the heat shields and lower them. (The frame crossmember straddles the drive shaft tunnel and prevents the exhaust from lowering.)
- 3) Using a screwdriver, puncture the heat shield for the fasteners using the existing holes in the frame as a guide.
- 4) Use the rotary tool and carbide bit as required to enlarge the holes to allow the thread of the 1/2"-13 fasteners to pass through them. Fishwire the 1/2" fasteners and spacers through the large slots in the frame rail. (Refer to fishwire technique diagram above.)
- 5) Reinstall the heat shields, taking care not to push the carriage bolts into the frame rails.
- 6) Raise the hitch over the exhaust and into place. Loosely secure the hitch as shown using the 1/2" flange nuts.
- 7) Torque the all 1/2" fasteners to 110 lb. ft.
- 8) Raise exhaust and reinstall the rubber isolators and crossmember.

PERIODICALLY CHECK THIS RECEIVER HITCH TO ENSURE THAT ALL FASTENERS ARE TIGHT AND THAT ALL STRUCTURAL COMPONENTS ARE SOUND.