

INSTALLATION MANUAL

70136

Level of Difficulty

Difficult

Installation difficulty levels are based on time and effort involved and may vary depending on the installer level of expertise, condition of the vehicle and proper tools and equipment.

Installed Attachment Tabs

Height	16"
Width	37.5"

Parts List

Item	Qty	Description
1	1	Tow bar base plate, driver side
2	1	Tow bar base plate, passenger side
3	2	Tow bar mounting tab
4	2	Safety cable, 7,500 lbs.
5	4	Fishwire, 3/8"
6	4	Carriage bolt, 3/8"-16 x 1-1/4", grade 8
7	6	Hex head cap screw, 3/8"-16 x 1-1/4", grade 8
8	4	Serrated-flange nut, 3/8"-16, grade 8
9	6	Nylock nut, 3/8"-16, grade 8
10	4	Square hole spacer, 1/4" x 1" x 2"
11	2	Quick link, 1/2"
12	2	Caplugs

Tools Required

Socket, 7mm	Torx bit, T-15
Socket, 10mm	Torx bit, T-20
Socket, 7/16"	Nut driver, 5/16"
Socket, 9/16"	Hole saw, 2-1/2"
Wrench, 7/16"	Utility knife
Wrench, 9/16"	Tape measure
Torque wrench	Flat screwdriver
Drill	Large clamp
Drill bit, 3/8"	--

⚠ WARNING

Never exceed the vehicle manufacturer's recommended towing capacity.

Product Photo



NOTICE

Before you begin installation, read all instructions thoroughly.

Proper tools will improve the quality of installation and reduce the time required.

This installation requires:

- Temporary removal of bumper cover/grill, washer reservoir and temperature sensor
- Fishwiring
- Trimming
- Drilling

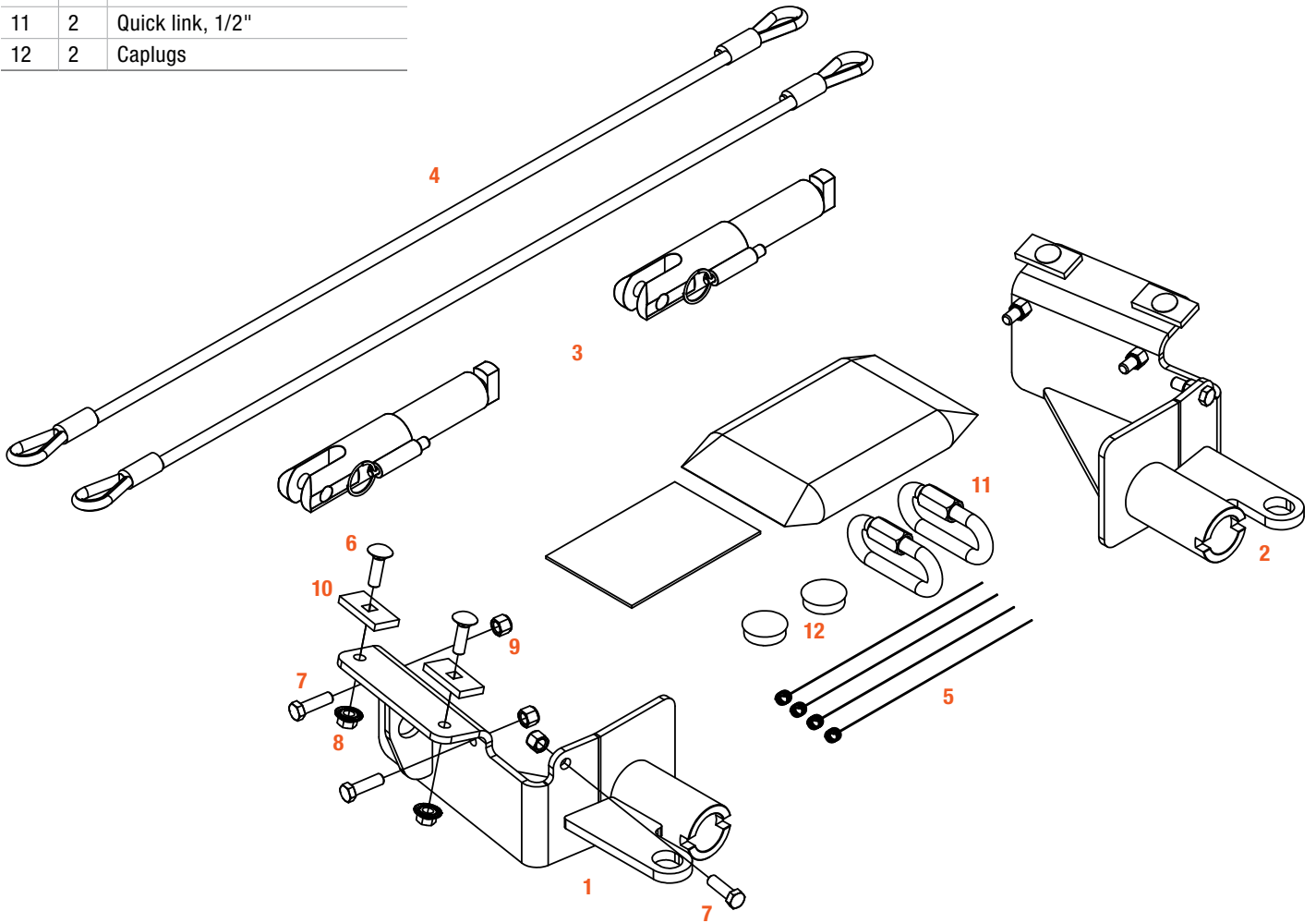
To help prevent damage to the product or vehicle, refer to the specified torque specifications when securing hardware during the installation process.

If equipped, we recommend removing the base plate attachment tabs when not in use.

ASSEMBLY

Parts List

Item	Qty	Description
1	1	Tow bar base plate, driver side
2	1	Tow bar base plate, passenger side
3	2	Tow bar mounting tab
4	2	Safety cable, 7,500 lbs.
5	4	Fishwire, 3/8"
6	4	Carriage bolt, 3/8"-16 x 1-1/4", grade 8
7	6	Hex head cap screw, 3/8"-16 x 1-1/4", grade 8
8	4	Serrated-flange nut, 3/8"-16, grade 8
9	6	Nylock nut, 3/8"-16, grade 8
10	4	Square hole spacer, 1/4" x 1" x 2"
11	2	Quick link, 1/2"
12	2	Caplugs



Step 1

Remove the twelve push fasteners from the radiator cover on the top of the grill, six on each side.

Remove cover and set aside.



Step 2

Use a 7mm socket to remove the six bolts securing the top of the grill to the vehicle.



Step 3

Use a T-15 Torx bit to remove the five bolts along the front edge of both of the front wheel wells.



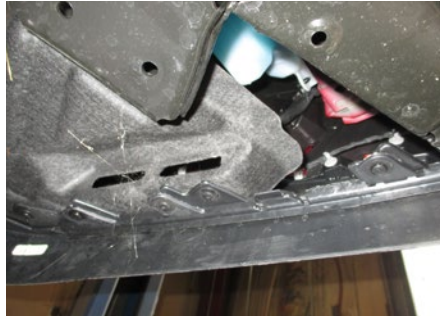
Step 4

Expose the wheel well from behind the liner. Use a 7mm socket to remove the bolt at the bumper cover seam on both sides of the vehicle.



Step 5

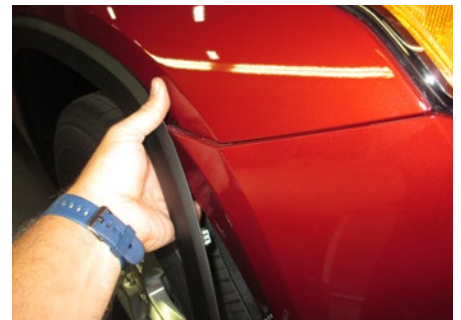
Use a T-15 Torx to remove the eight bolts from the bottom of the bumper cover, two on each side and four in the center.



Step 6

Pull the bumper cover outward working from the wheel wells. Disconnect the temperature sensor on the passenger side by squeezing the red button and pulling down on the tab on the connector.

Remove the bumper cover and carefully set aside.



Step 7

Unclip the wire harness on the driver side of the vehicle and trim the shutter mounting flanges as needed on both sides.



Step 8

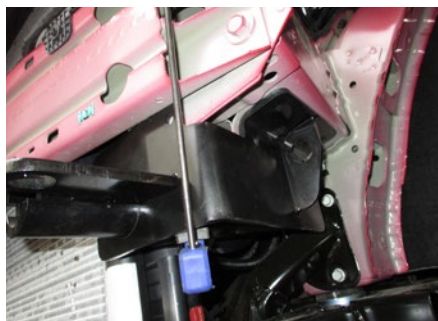
Use a 10mm socket to remove the nut from the top of the washer reservoir on the driver side.

Remove all lines from the reservoir and plug fluid lines. Use a 10mm socket to remove the two bolts from the bottom of the reservoir. Set the reservoir to the side for later.



Step 9

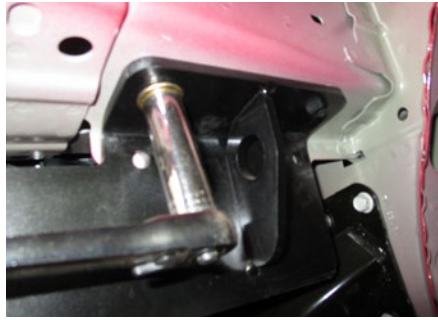
Raise each baseplate weldment (#1, #2) and clamp in place on both sides of the vehicle. Some trimming of the flange on the radiator may be required on the passenger side.



Step 10

Use a 3/8" drill bit to drill the forward-most top holes. Fishwire the 3/8" carriage bolt (#6) and square hole spacer (#10) into the frame and through the baseplate and secure with 3/8" serrated-flange nuts (#8).

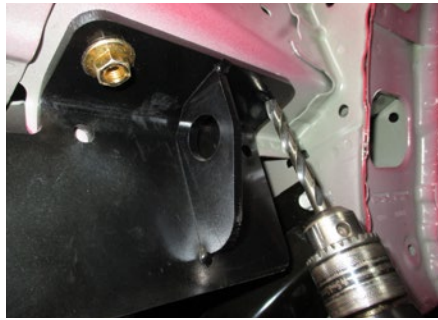
Repeat on the other side of the vehicle and remove clamps.



Step 11

Drill for the remaining four holes and install 3/8" nylock nuts (#9) and 3/8" hex head cap screws (#7) as shown on both sides of the vehicle.

Torque all 3/8" hardware to 37 lb-ft.



Step 12

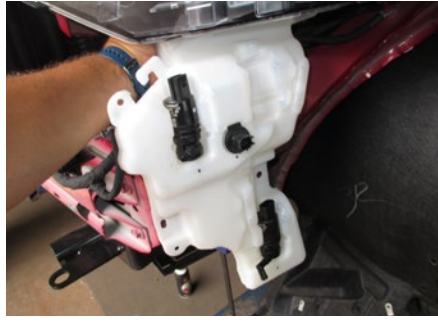
Install the permanent safety cables (#4), looping them around the vehicle frame and linking them to the tow bar base plate (#1, #2). There must be one cable on each side of the vehicle.

Make sure the cables do not pinch or interfere with any hoses, wiring or other components (see Installing the Permanent Base Plate Safety Cables for additional information).



Step 13

Reinstall the washer reservoir removed in step 8.



Step 14

Hold the bumper cover as close to its original position, mark and trim the bumper cover as needed for baseplate clearance. Use the 2-1/2" hole saw to cut the holes for the T-bolt sockets. Reinstall the bumper cover, radiator cover, and reconnect all electrical components.



Final Installed Image

