

INSTALLATION MANUAL

70132

Level of Difficulty

Moderate

Installation difficulty levels are based on time and effort involved and may vary depending on the installer level of expertise, condition of the vehicle and proper tools and equipment.

Installed Attachment Tabs

Height	19.5"
Width	37"

Parts List

Item	Qty	Description
1	1	Tow bar base plate, driver side
2	1	Tow bar base plate, passenger side
3	2	Tow bar mounting tab
4	2	Safety cable, 7,500 lbs.
5	4	Carriage bolt, 1/2"-13, grade 5
6	4	Hex bolt, M10 x 1.25"-40
7	6	Rivet, M6
8	4	Serrated flange nut, 1/2"-13, grade 5
9	4	Conical-toothed washer, 3/8"
10	2	Quick link, 1/2"
11	2	Caplugs # dop-1375

Tools Required

Torque wrench	Ratchet
Socket, 8mm	Flat screwdriver
Socket, 10mm	Drill
Socket, 15mm	Drill bit, 1/4"
Socket, 3/4"	Rivet gun
Socket, 7/16"	Reciprocating saw or Rotary cutting tool

⚠ WARNING

Never exceed the vehicle manufacturer's recommended towing capacity.

Product Photo



NOTICE

Visit www.curtmfg.com for a full-color copy of this instruction manual, as well as helpful videos, guides and much more!

Before you begin installation, read all instructions thoroughly.

Proper tools will improve the quality of installation and reduce the time required.

This installation requires:

- Drilling
- Trimming

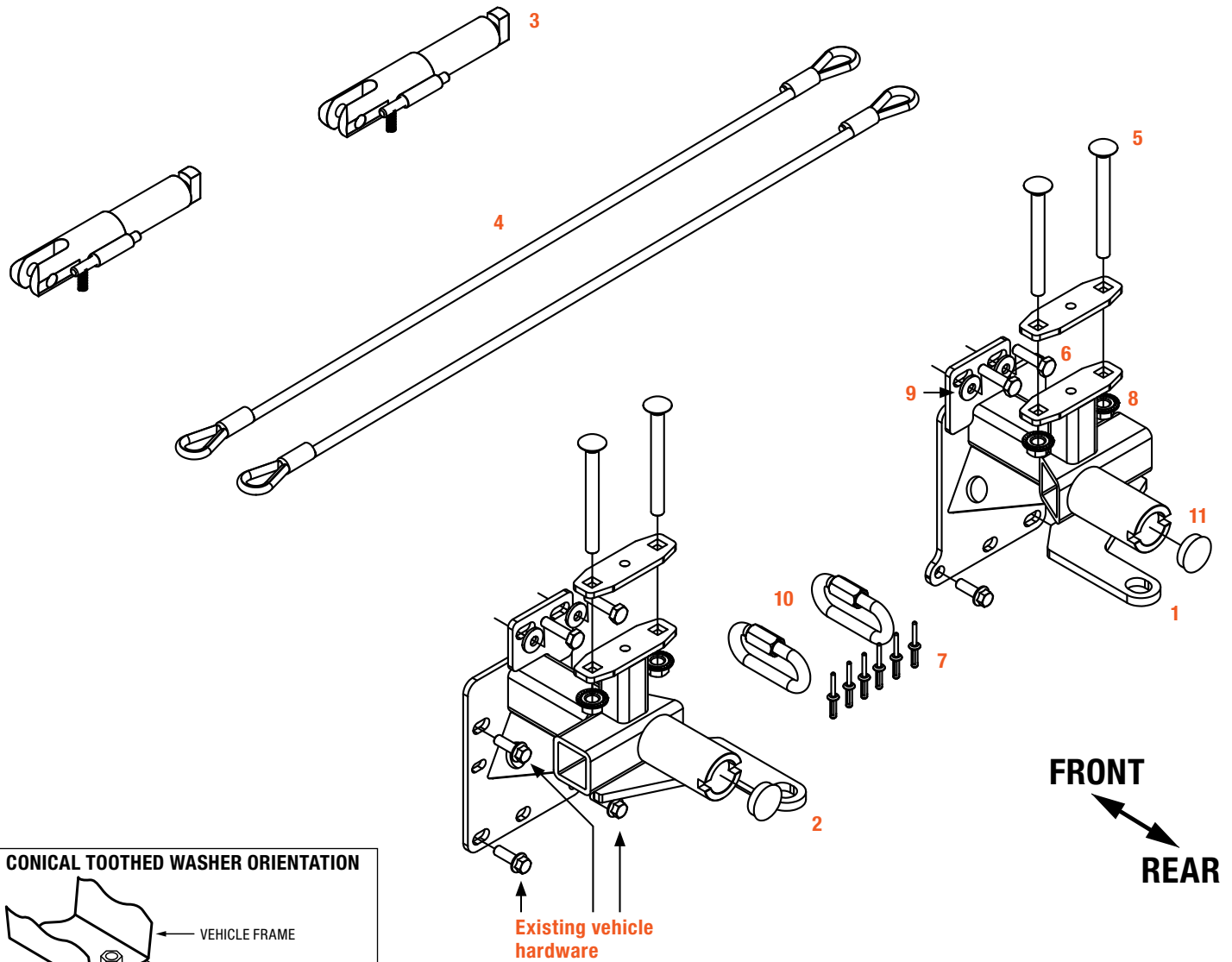
Periodic inspection of your product should be performed to ensure all hardware and / or components remain secure.

To help prevent damage to the product or vehicle, refer to the specified torque specifications when securing hardware during the installation process.

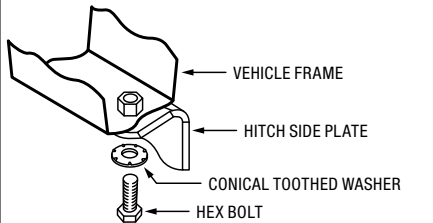
ASSEMBLY

Parts List

Item	Qty	Description
1	1	Tow bar base plate, driver side
2	1	Tow bar base plate, passenger side
3	2	Tow bar mounting tab
4	2	Safety cable, 7,500 lbs.
5	4	Carriage bolt, 1/2"-13, grade 5
6	4	Hex bolt, M10 x 1.25"-40
7	6	Rivet, M6
8	4	Serrated flange nut, 1/2"-13, grade 5
9	4	Conical-toothed washer, 3/8"
10	2	Quick link, 1/2"
11	2	Caplugs # dop-1375

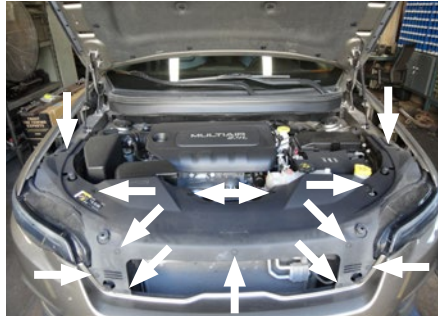


CONICAL TOOTHED WASHER ORIENTATION



Step 1

Remove the thirteen push fasteners from the top edge of the fascia cover. There are six push fasteners on each side and one in the center. Remove the fascia cover and set aside for reinstallation later.



Step 2

Using an 8mm socket, remove the four bolts from the edge of the wheel well. Pull back the wheel well cover. Using a 10mm socket, remove the bolt behind the trim.

Repeat on the other side of the vehicle.



Step 3

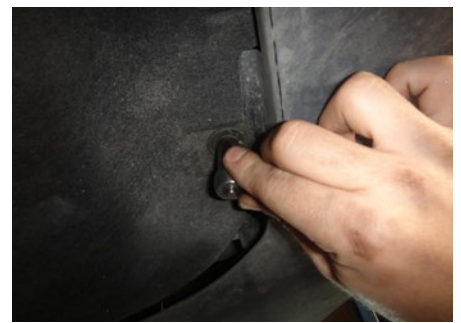
Using a 1/4" drill bit, drill out and remove the three rivets underneath the vehicle in front of the front tire.

Repeat on the other side of the vehicle.



Step 4

Use a 10mm socket to remove the four bolts on the underside of the vehicle.



Step 5

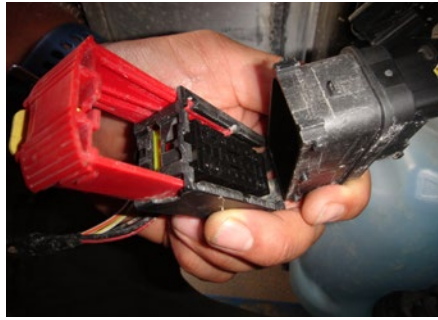
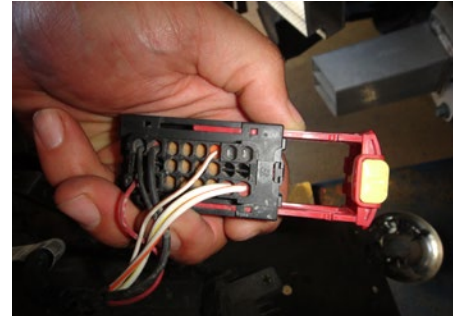
Unclip the wheel well trim from the backside. Pull the fascia outward to remove.

Repeat on the other side of the vehicle.



Step 6

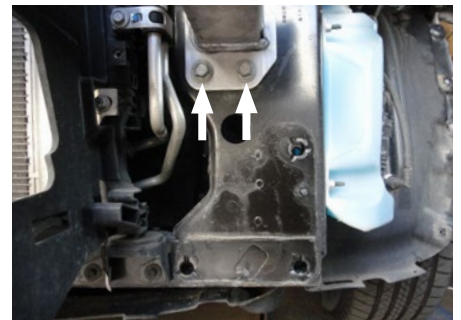
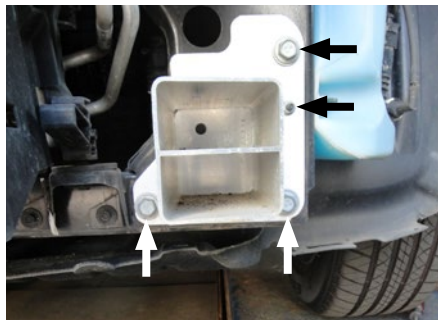
When removing the fascia, unhook the plug located on the driver side by pulling out the yellow piece and pull up on the red part to disconnect. Finish removing fascia and set aside for reinstallation later.



Step 7

Use a 15mm socket to remove the three bolts from the frame extension and two bolts from the bottom side of the bumper. Use a 10mm socket to remove the nut from the frame extension.

Repeat on the other side of the vehicle. Return the frame extensions to the owner, they will not be reinstalled.



Step 8

Slide the baseplate (#1, #2) into place and start the two M10 hex bolts (#6) with 3/8" conical-toothed washers (#9) on the bottom of the bumper. Install the three existing M10 bolts and nut.

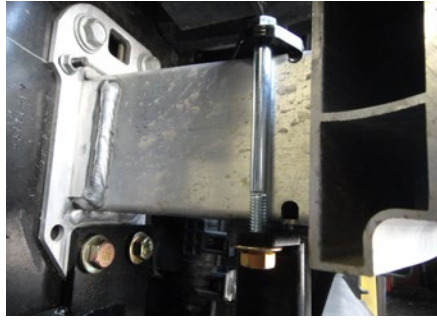
Repeat on the other side of the vehicle.



Step 9

Take the flat top plate and place on top of the bumper as shown. Take two 5" carriage bolts (#5) and insert them through the top plate and baseplate. Secure with two serrated flange nuts (#8).

Repeat on the other side of the vehicle.



Step 10

Torque all hardware.

Torque M10 hardware to 48 ft-lbs
Torque 1/2" hardware to 64 ft-lbs



Step 11

Trim the fascia area using the trim diagrams to the right as reference.

Non Shutter Models: Use a 7mm socket to remove the two bolts from the air dam on the backside of the fascia. Unclip the three clips by pushing down on the inside of the clip. Remove the air dam. Repeat on the other side of the vehicle.

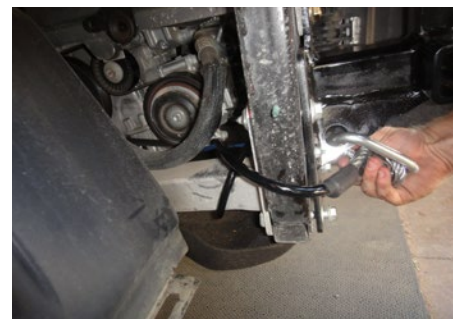
Shutter Models: The plastic surrounding of the outer grill area must be trimmed to expose the grill behind. Follow the protrusion straight down, leaving areas next to the screws intact. Repeat on the other side of the vehicle.



Step 12

Install the permanent safety cables (#4) and quick links (#10), looping them around the vehicle frame and linking them to the tow bar base plate (#1, #2). There must be one cable on each side of the vehicle. Reinstall the bumper and reconnect all electrical wires.

Make sure the cables do not pinch or interfere with any hoses, wiring or other components (see Installing the Permanent Base Plate Safety Cables for additional information).



Step 13

Reinstall the fascia and fascia cover. Replace rivets that were removed in step 3. Be sure to reconnect all electrical connections.

Final Installed Image

