

INSTALLATION MANUAL

70123

Level of Difficulty

Difficult

Installation difficulty levels are based on time and effort involved and may vary depending on the installer level of expertise, condition of the vehicle and proper tools and equipment.

Installed Attachment Tabs

Height	16-1/2"
Width	18"

Parts List

Item	Qty	Description
1	1	Tow bar base plate
2	2	Tow bar mounting tab
3	2	Safety cable, 7,500 lbs.
4	6	Square-hole spacer, 1/4" x 1" x 2"
5	6	Carriage bolt, 3/8"-16 x 1-1/2", grade 8
6	2	Hex bolt, 1/4"-20 x 1", grade 8
7	4	Hex bolt, 3/8"-16 x 1-1/4", grade 8
8	2	Flange nut, 1/4"-20, grade 5
9	6	Serrated-flange nut, 3/8"-16, grade 8
10	4	Nylock nut, 3/8"-16, grade 8
11	2	Quick link, 1/2"
12	2	Socket plug

Tools Required

Torque wrench	Drill
Socket, 9/16"	Drill bit, 1/4"
Socket, 7mm	Drill bit, 13/32"
Socket, 10mm	Hole saw, 1-1/4"
Wrench, 9/16"	Phillips screwdriver
Torx, T-15	Flat head screwdriver
Large vise grip	Tape measure
Fishwire, 3/8" (includes 6)	Utility knife

⚠ WARNING

Never exceed the vehicle manufacturer's recommended gross vehicle weight rating (GVWR).

Product Photo



Not pictured: Safety cables, quick links and socket plugs

⚠ CAUTION

Take care when cutting any plastic or metal as injury may occur if done improperly.

NOTICE

Before you begin installation, read all instructions thoroughly.

Proper tools will improve the quality of installation and reduce the time required.

This installation requires fascia panels, coolant lines and a temperature sensor to be temporarily removed and reinstalled. Some drilling and trimming are also required.

To help prevent damage to the product or vehicle, refer to the specified torque specifications when securing hardware during the installation process.

If equipped, we recommend removing the base plate attachment tabs when not in use.

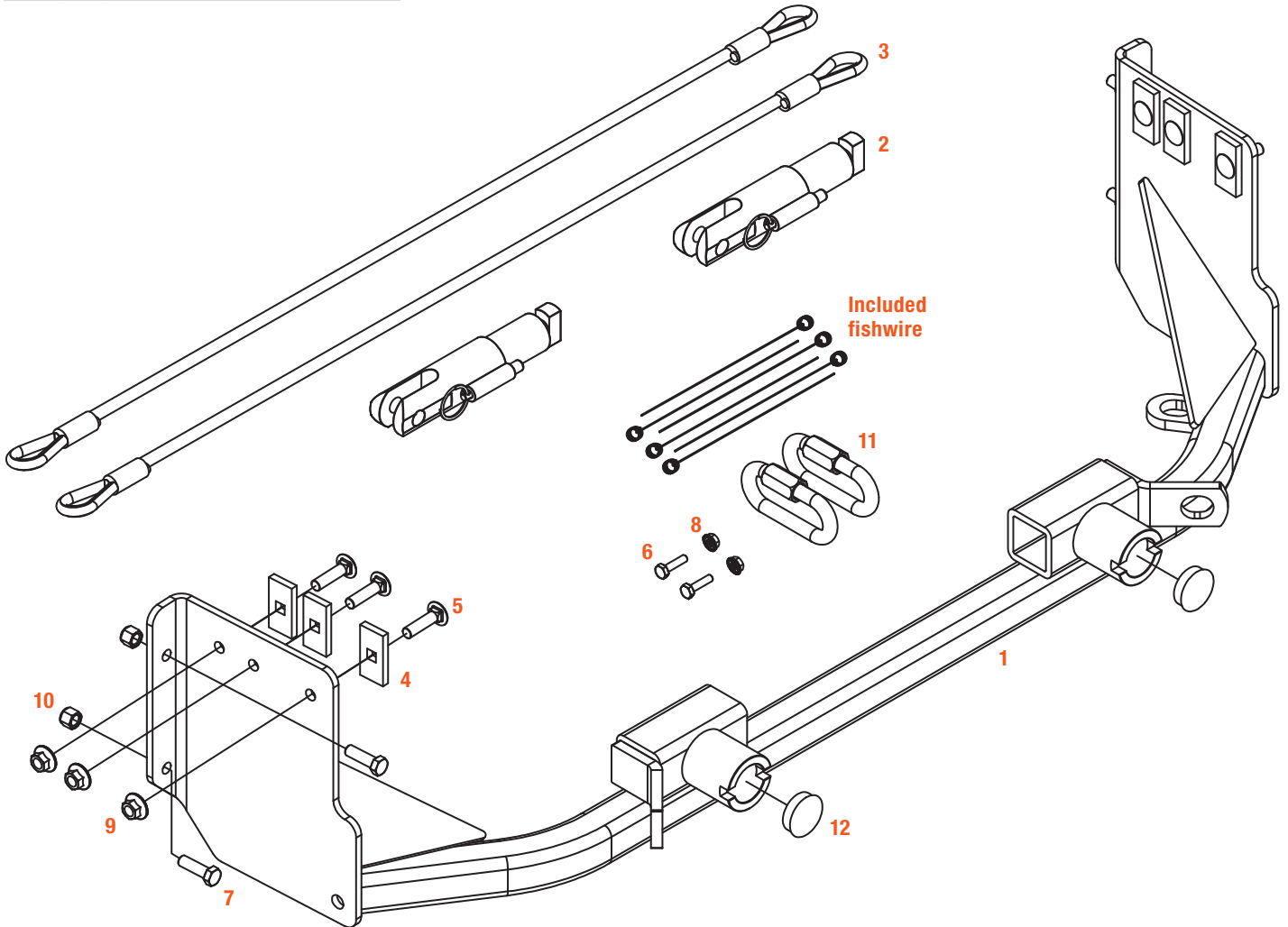
SAFETY INSTRUCTIONS

Safety glasses should be worn at all times while installing this product.

ASSEMBLY

Parts List

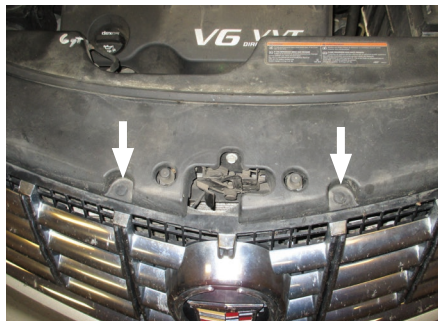
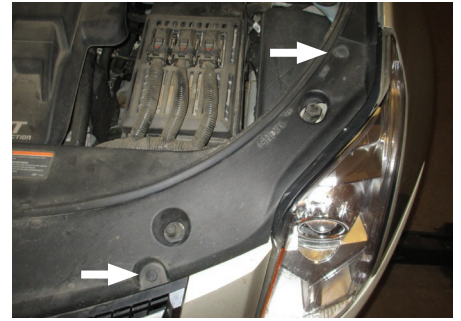
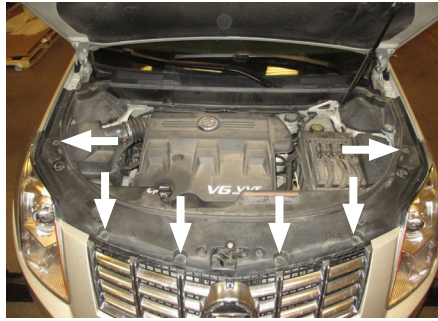
Item	Qty	Description
1	1	Tow bar base plate
2	2	Tow bar mounting tab
3	2	Safety cable, 7,500 lbs.
4	6	Square-hole spacer, 1/4" x 1" x 2"
5	6	Carriage bolt, 3/8"-16 x 1-1/2", grade 8
6	2	Hex bolt, 1/4"-20 x 1", grade 8
7	4	Hex bolt, 3/8"-16 x 1-1/4", grade 8
8	2	Flange nut, 1/4"-20, grade 5
9	6	Serrated-flange nut, 3/8"-16, grade 8
10	4	Nylock nut, 3/8"-16, grade 8
11	2	Quick link, 1/2"
12	2	Socket plug



FASCIA REMOVAL

Step 1

Open the hood and remove the six push pins in the top fascia cover, four across the front and one on each side



Step 2

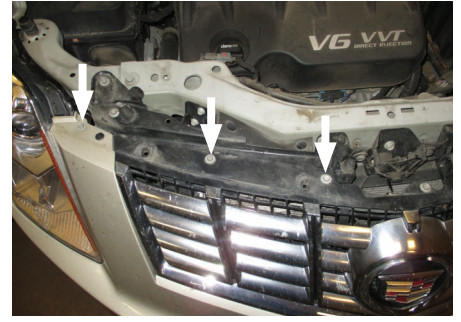
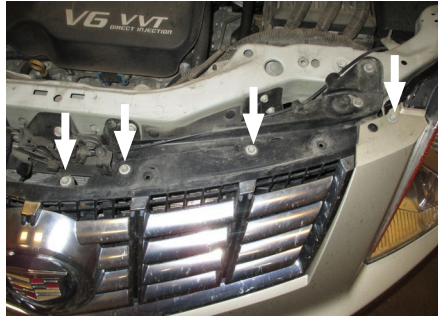
Remove the rubber strip along the top, unhooking it from the radiator cover.

Carefully pull straight up on the radiator cover to release the two clips underneath.



Step 3

Use a 10mm socket to remove the seven bolts along the top edge of the front fascia, three on each side and one in the middle.



Step 4

Use a Phillips screwdriver to remove the four screws along the front edge of the wheel well liner. Repeat on the other side of the vehicle.

2015 models will have T15 Torx screws instead.



Step 5

Pull the wheel well liner back and use a 7mm socket to remove the bolt on the inside edge.

Repeat on the other side of the vehicle.



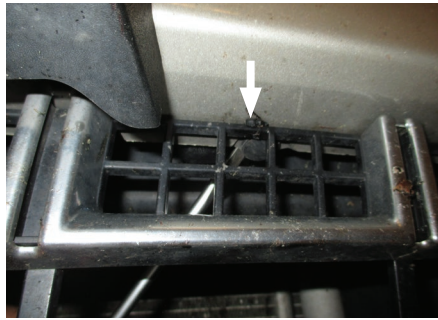
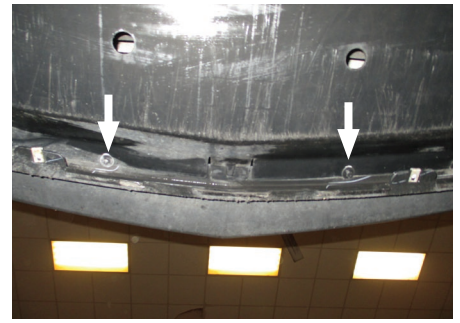
Step 6

Use a 7mm socket to remove the 12 screws along the bottom edge of the front fascia.

For 2010 – 2014 models, remove the two push pins from the bottom edge of the front fascia, one on either side, before removing the fascia.

Then, carefully pull the fascia forward to remove it, and set it aside.

Note: Disconnect the wiring harness on the driver side connected to the bumper cover.



Step 7

Use a 10mm socket to remove the two bolts holding the transmission coolant line loop in place on the bumper. With the coolant loop still attached to the flexible lines, move the loop out of the way (either let it hang or spin it under the vehicle).

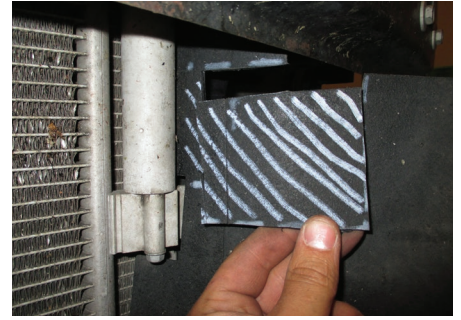
For 2010 - 2014 models, remove the push pin from the back side of the temperature sensor.



Step 8

Use a paint pen to mark the plastic air dam as needed to allow clearance for the base plate. Then, use a utility knife to cut the marked areas.

Repeat on the other side of the vehicle.



Step 9

Make a mark about 1" above the holes of the previously removed coolant line bolts. Then, drill a 1/4" hole at each mark, drilling through the bumper and out the back side.



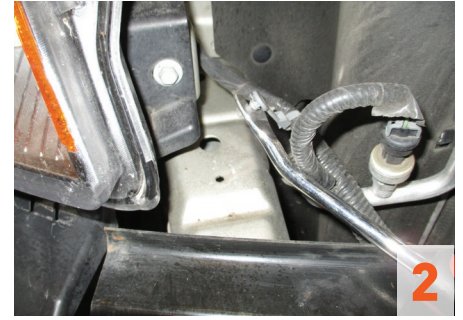
Step 10

Using the new 1/4" holes as a guide, enlarge the holes with a 1-1/4" hole saw or step drill. Then, reattach the coolant line, using the 1/4" back side holes and supplied hardware (#6, #8).



Step 11

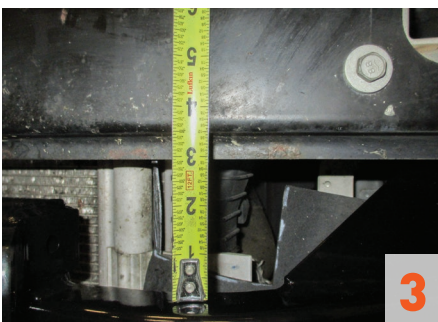
On the top of the passenger-side frame rail remove the clip holding the wiring harness. Then, drill a 1-1/4" hole down through the metal frame rail using a hole saw or step drill. Drill through two layers of metal.



TOW BAR BASE PLATE INSTALLATION

Step 12

Position the tow bar base plate (#1) on the vehicle. There should be a 3-1/2" gap between the bottom of the bumper and the top of the base plate frame tube. With the base plate level, temporarily clamp it onto the frame.

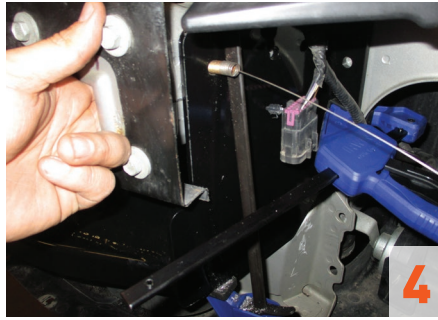
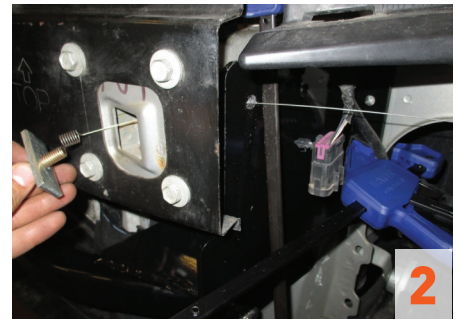
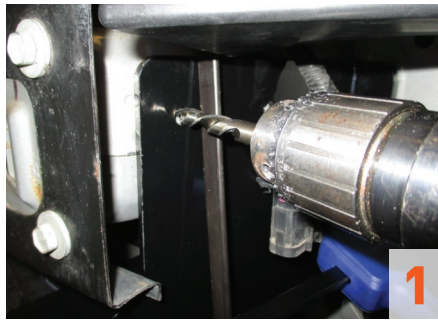


Step 13

Using the top, front hole in the passenger side plate as a guide, drill a 13/32" hole in the vehicle frame.

Then, fishwire a 3/8"-16 carriage bolt (#5) and square hole spacer (#4) through the access holes and secure with a 3/8"-16 serrated-flange nut (#9) outside of the side plate.

Repeat on the driver side of the vehicle, except fishwire through the end of the frame, and torque the hardware to 37 lb-ft.



Step 14

Drill the four remaining holes in the side plate, using a 13/32" bit, two in the upper side plate and two in the pinch flange.

As done in Step 13, fishwire two 3/8"-16 carriage bolts (#5) and square hole spacers (#4) through the upper holes and secure with 3/8"-16 serrated-flange nuts (#9) outside of the side plate.

Install two 3/8" hex bolts (#7) and nylock nuts (#10) through the pinch flange as shown in the diagram on page 2.

Repeat on the other side of the vehicle and torque all hardware to 37 lb-ft.



Step 15

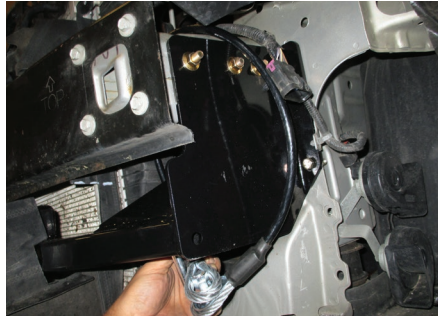
On 2010 – 2014 models, reinstall the temperature sensor, attaching it to the radiator with the included zip tie.

Step 16

Install the permanent safety cables (#3) and quick links (#11), looping them around the vehicle frame and linking them to the tow bar base plate main body (#1). There must be one cable on each side of the vehicle.

Make sure the cables do not pinch or interfere with any hoses, wiring or other components.

See 'Installing the Permanent Base Plate Safety Cables' for additional information.



Step 17

Reinstall the front fascia and fascia cover, making sure to reconnect any electrical harnesses. Some models may require the lower fascia grille to be trimmed to make space for the safety cable loops and attachment tabs.

When ready to tow, install the tow bar mounting tabs (#2). When not towing, insert the socket plugs (#12) into the ends of the tow bar base plate (#1).



Final Installed Image



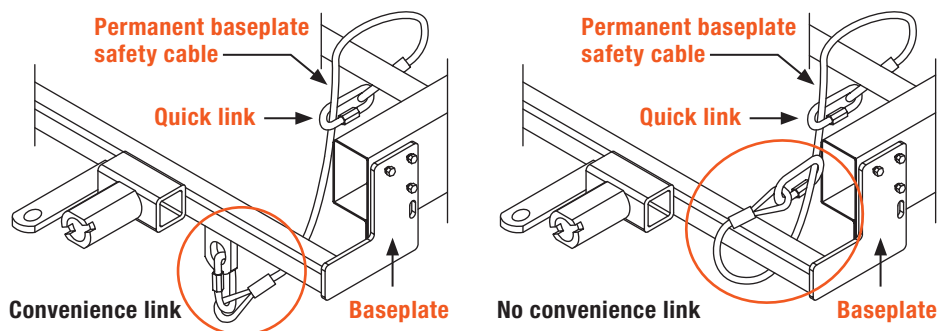
SAFETY CABLE INSTALLATION

Installing the Permanent Base Plate Safety Cables

When dinghy towing a vehicle with a tow bar, base plate safety cables should be used at all times. In the event of a disconnect, the safety cables are designed to help prevent complete vehicle separation. When installing the safety cables, use the illustrations below as a guide.

Installation guidelines

1. The cables must be connected to the base plate and the vehicle frame.
2. Two cables must be installed.
3. Each cable must meet or exceed the gross weight of the towed vehicle.
4. Make sure cables do not pinch or interfere with hoses, wiring or other components.



Note: Base plate safety cables are not a replacement for safety chains connecting the tow vehicle to the towed vehicle.

ADDITIONAL INFORMATION

Towing Tips

Check your equipment

Periodically check the condition of all towing equipment. Ensure all fasteners are tight and that all structural components are sound. Do not tow with worn or damaged parts.

Vehicle manufacturer's recommendations

Review the owner's manual for your towed vehicle and towing vehicle for specific recommendations, capacities and requirements.