

INSTALLATION MANUAL

70119

Level of Difficulty

Difficult

Installation difficulty levels are based on time and effort involved and may vary depending on the installer level of expertise, condition of the vehicle and proper tools and equipment.

Installed Attachment Tabs

Height	22"
Width	24"

Parts List

Item	Qty	Description
1	1	Tow bar base plate, main body
2	1	Tow bar base plate, driver-side mounting plate
3	1	Tow bar base plate, passenger-side mounting plate
4	2	Tow bar mounting tab
5	2	Safety cable, 3,500 lbs.
6	10	Square hole spacer, 1/4" x 1" x 2"
7	2	Carriage bolt, 3/8"-16, 1-1/2", grade 8
8	8	Carriage bolt, 3/8"-16, 2", grade 8
9	10	Flange nut, 3/8"
10	1	Hex head bolt, 1/4"-20, 3/4", grade 8
11	1	Nylock nut, 1/4"
12	1	Flat washer, 1/4"
13	1	Fuse relocation bracket
14	2	Cable tie, 15"
15	2	Quick link, 1/4"
16	2	Socket plug

Tools Required

Torque wrench	Drill
Socket, 7mm	Drill bit, 13/32"
Socket, 8mm	Hole saw, 1-1/4"
Socket, 9/16"	T25 Torx
Wrench, 9/16"	T30 Torx
Tape measure	Phillips screwdriver
Utility knife	Flat head screwdriver
Large vise grip	Reciprocating saw
Fishwire, 3/8" (includes 11)	--

⚠ WARNING

Never exceed the vehicle manufacturer's recommended gross vehicle weight rating (GVWR).

Product Photo



Not pictured: Safety cables, quick links and socket plugs

⚠ CAUTION

Take care when cutting any plastic or metal as injury may occur if done improperly.

NOTICE

Before you begin installation, read all instructions thoroughly.

Proper tools will improve the quality of installation and reduce the time required.

This installation requires the headlights, front fascia panel and windshield washer reservoir to be temporarily removed and reinstalled. Some drilling and trimming are also required.

To help prevent damage to the product or vehicle, refer to the specified torque specifications when securing hardware during the installation process.

If equipped, we recommend removing the base plate attachment tabs when not in use.

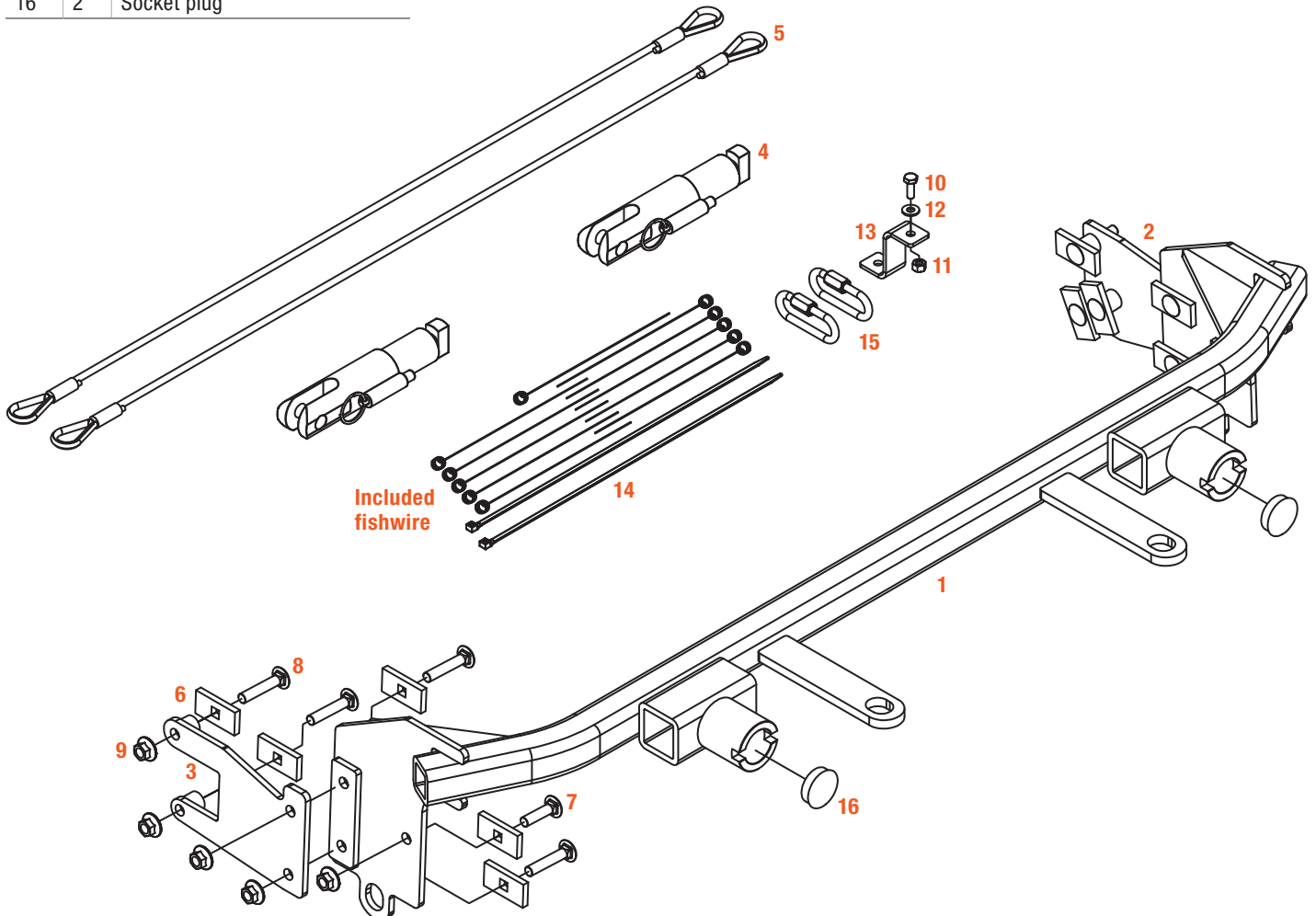
SAFETY INSTRUCTIONS

Safety glasses should be worn at all times while installing this product.

ASSEMBLY

Parts List

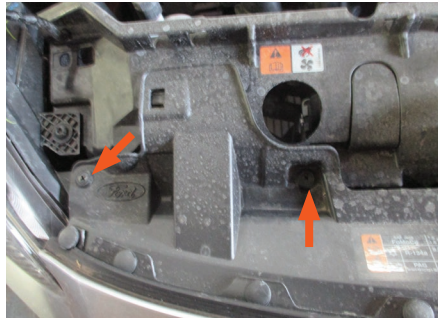
Item	Qty	Description
1	1	Tow bar base plate, main body
2	1	Tow bar base plate, driver-side mounting plate
3	1	Tow bar base plate, passenger-side mounting plate
4	2	Tow bar mounting tab
5	2	Safety cable, 3,500 lbs.
6	10	Square hole spacer, 1/4" x 1" x 2"
7	2	Carriage bolt, 3/8"-16, 1-1/2", grade 8
8	8	Carriage bolt, 3/8"-16, 2", grade 8
9	10	Flange nut, 3/8"
10	1	Hex head bolt, 1/4"-20, 3/4", grade 8
11	1	Nylock nut, 1/4"
12	1	Flat washer, 1/4"
13	1	Fuse relocation bracket
14	2	Cable tie, 15"
15	2	Quick link, 1/4"
16	2	Socket plug



BUMPER FASCIA REMOVAL

Step 1

Open the hood and use a Phillips screwdriver to remove the four push pins in the top of the fascia cover - two on each side.



Step 2

Use a T-25 Torx bit to remove the two screws along the inside edge of the wheel well liner.

Repeat on the other side of the vehicle.



Step 3

Use an 8mm socket to remove the bolt in the bumper fascia joint, near the top of the wheel well.



Step 4

Use a 7mm socket to remove the five screws on the underside of the front fascia, along the outer edge. There are two in each corner and one in the center.



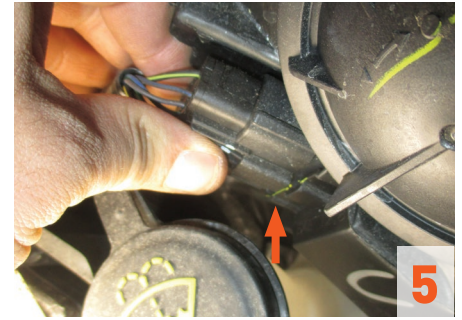
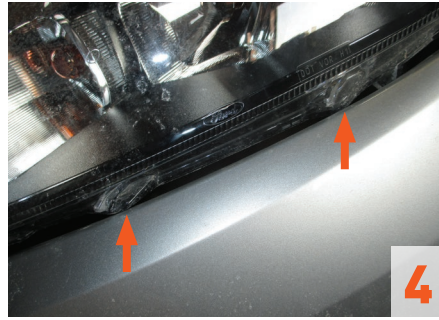
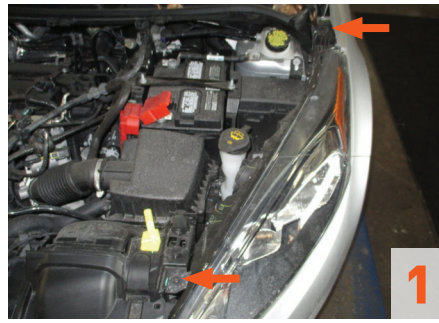
Step 5

Use a T-30 Torx bit to remove the two screws securing the headlight assembly in place. Remove the headlight and set aside.

Note: You may need to shift the headlight assembly side-to-side to dislodge it from the bumper. Take care not to break the tabs shown in image 4.

Disconnect the wiring harness and carefully set the headlight aside.

Repeat on the other side of the vehicle.

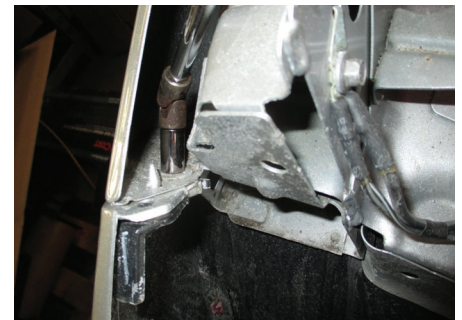
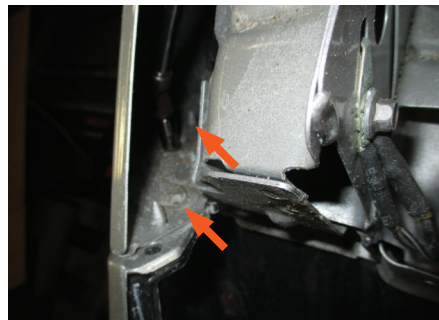


Step 6

Use an 8mm socket to remove the two screws in the fascia joint below the headlight.

Repeat on the other side of the vehicle. Then, remove the front fascia from the vehicle, disconnecting all wiring harnesses.

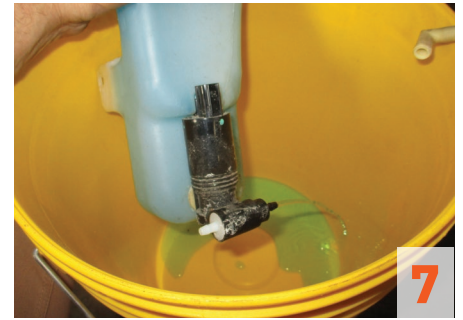
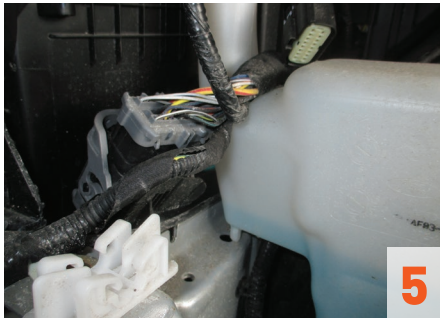
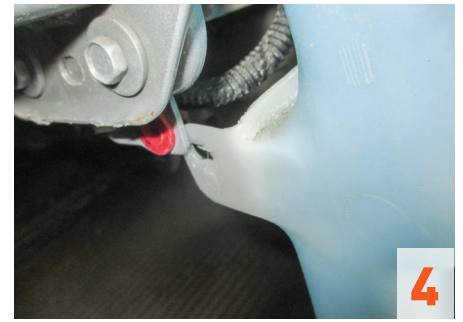
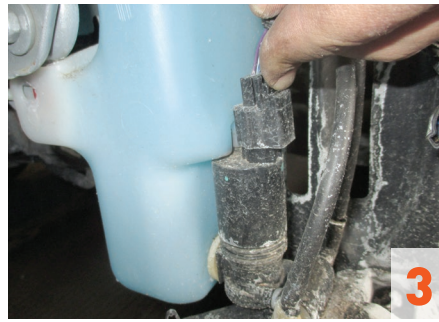
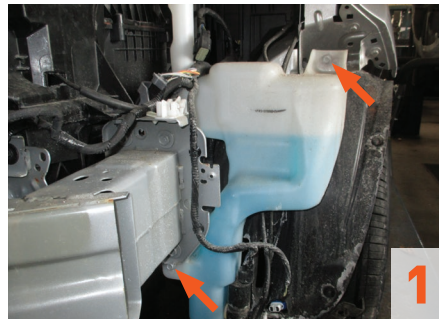
Set the fascia aside.



Step 7

To remove the windshield washer reservoir, disconnect the wiring harness from the frame clip. Then, use a 10mm socket to remove the two mounting screws for the reservoir. Disconnect all fluid lines and set the reservoir aside.

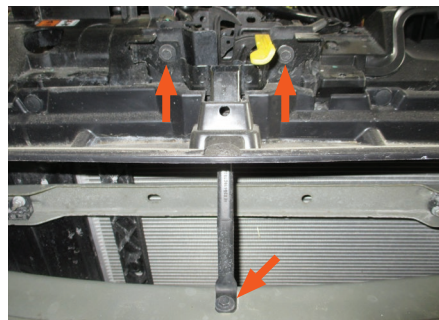
Note: Be sure to have a clean container ready to catch the washer fluid when the lines are disconnected. Set the fluid aside to refill after the installation.



Step 8

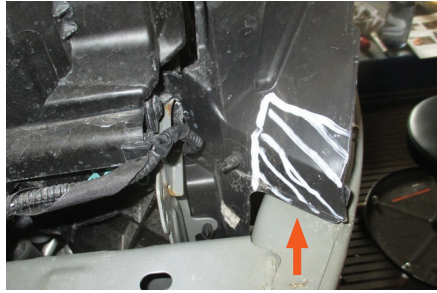
Use a 10mm socket to remove the three screws from the hood latch support brace.

Then, lift the brace up and away from the bumper. Remove it and keep for later reinstallation.



Step 9

For ST / SE models: Use a paint pen to mark the areas on the upper shroud as shown. Then, use a utility knife to cut off the marked areas.



Step 10

For SFE models: Remove the four push pins in the shutter shroud, one on each side and two in the center. Also, remove the temperature sensor on the driver side, and set it aside.

A) Unsnap the two clips on top of the shutter shroud and remove the front portion of the shroud. Then, remove the rear portion of the shroud. The shroud will not be reinstalled.

B) Use a flathead screwdriver to disconnect the back rod from the shutter. Then, cut the bottom supports of the shutter to remove it, making it flush with the base.

C) Lift up on the shutter rod and cut it off, so it is flush with the base.

D) Use an 8mm socket to remove the two screws in the fuse box on the driver side. Carefully remove the fuse box and set it aside.

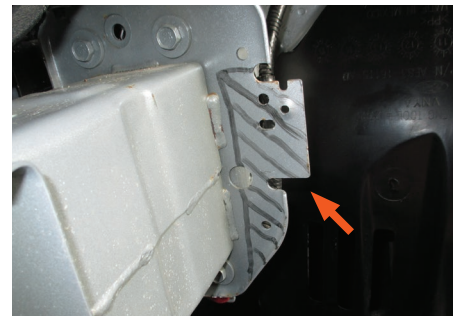
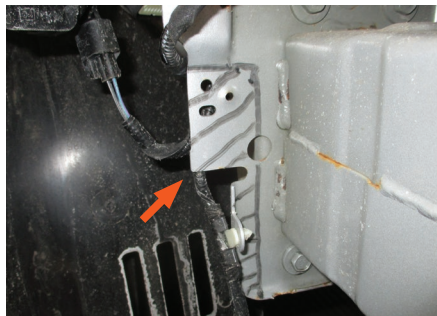


Step 11

Mark the areas on the frame extension that need to be trimmed off as shown.

Then, use a metal-cutting tool (reciprocating saw or cutoff wheel) to cut off the marked areas. Be careful not to cut or damage lines behind the cutting area.

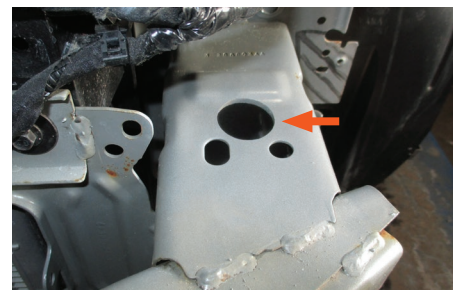
Repeat on the other side of the vehicle.



Step 12

Use a 1-1/4" hole saw to drill an access hole in the top of the bumper as shown.

Repeat on the other side of the vehicle.

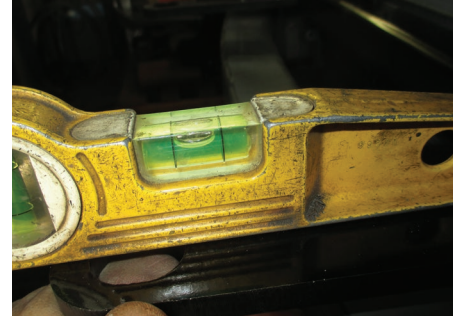


TOW BAR BASE PLATE INSTALLATION

Step 13

Position the tow bar base plate main body (#1) on the vehicle frame, making sure the bottom edge of the side plates is flush with the bottom of the frame.

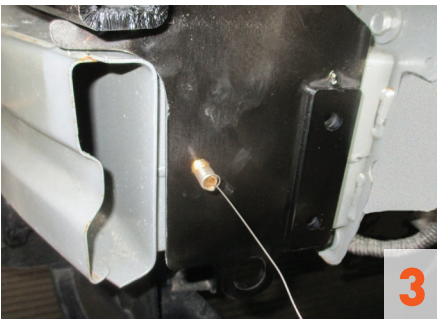
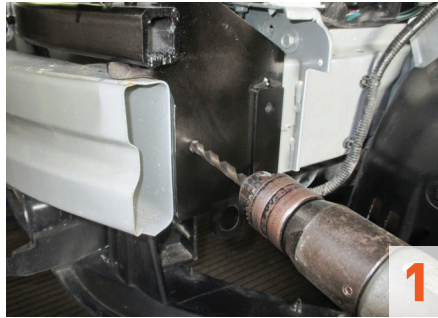
There should be a 1/2" gap between the front edge of the side plates and back edge of the bumper. Make sure the base plate is level and then clamp it into place.



Step 14

With the tow bar base plate level, use the front-most hole as a guide to drill a 13/32" hole in the vehicle frame. Then, fishwire a 3/8" x 1-1/2" carriage bolt (#7) with a square hole spacer (#6) into the frame and secure it with a 3/8" flange nut (#9).

Repeat on the other side of the vehicle. Then, torque all hardware to 37 lb-ft.

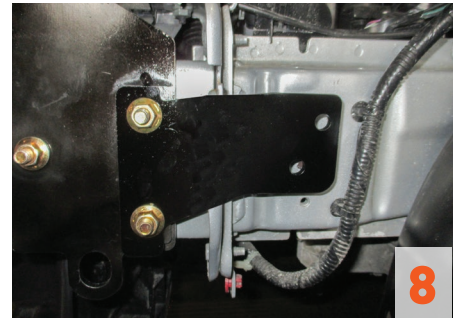
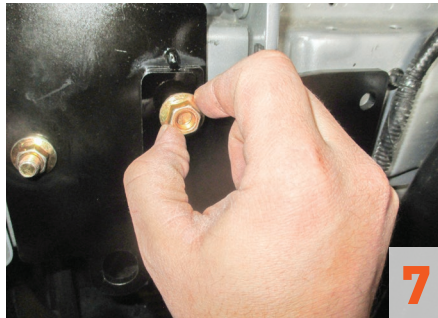
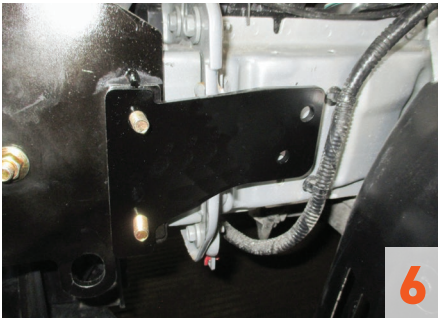
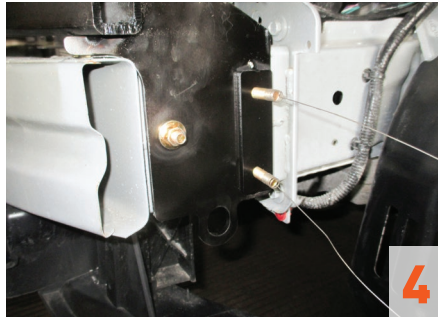


Step 15

Using the two rear holes as a guide, drill 13/32" holes in the vehicle frame. Position the driver-side tow bar base plate mounting bracket (#2) and fishwire two 3/8" x 2" carriage bolts (#8) with square hole spacers (#6) and secure them with 3/8" flange nuts (#9).

Repeat on the other side of the vehicle using the passenger-side mounting bracket (#3).

Torque the hardware to 37 lb-ft.

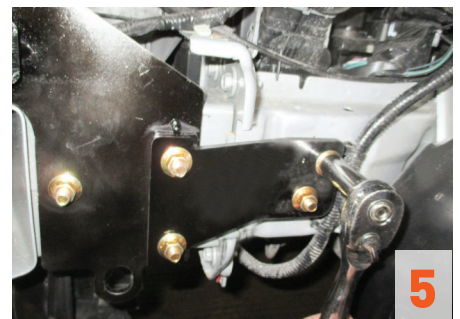
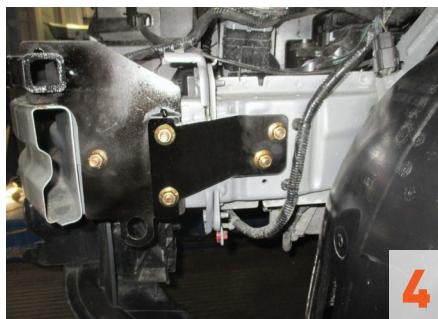
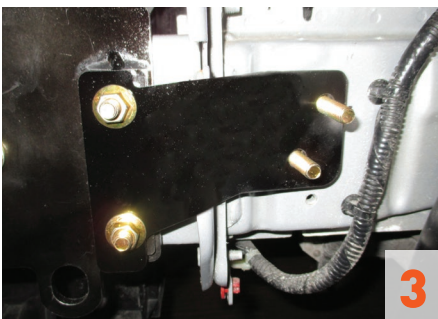
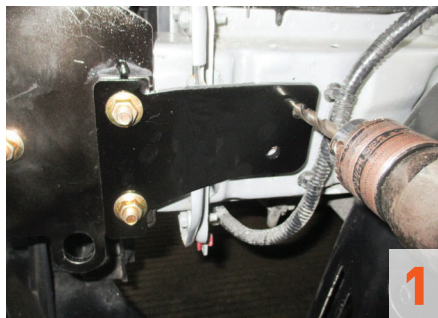


Step 16

Drill out the remaining two rearward holes in the driver-side tow bar base plate mounting bracket (#2) with a 13/32" drill bit. Install the remaining carriage bolts (#8), square hole spacers (#6) and flange nuts (#9).

Repeat on the other side of the vehicle.

Torque the hardware to 37 lb-ft.

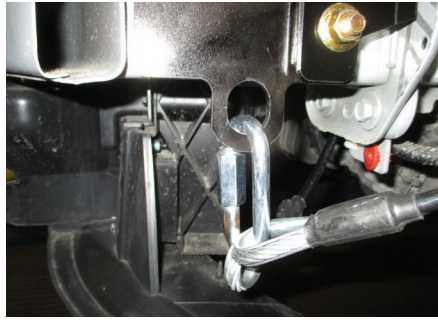
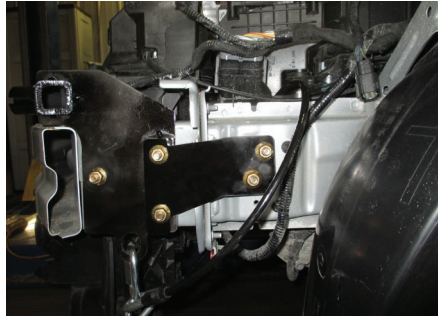


Step 17

Install the permanent safety cables (#5) and quick links (#15), looping them around the vehicle frame and linking them to the tow bar base plate main body (#1). There must be one cable on each side of the vehicle.

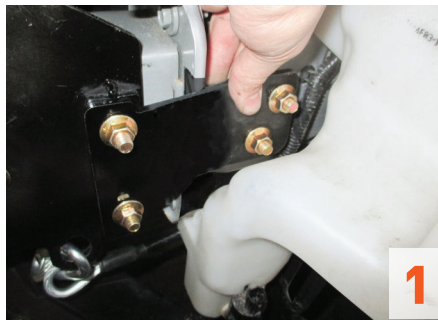
Make sure the cables do not pinch or interfere with any hoses, wiring or other components.

See 'Installing the Permanent Base Plate Safety Cables' for additional information.



Step 18

Reinstall the windshield washer reservoir using the factory hardware. Make sure the reservoir has at least 1/16" of clearance from the base plate.

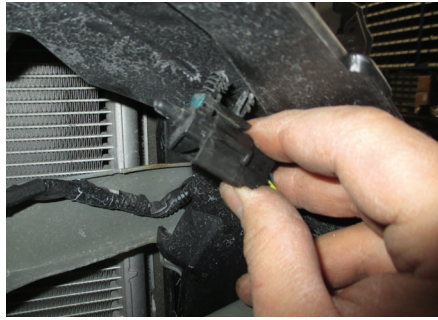
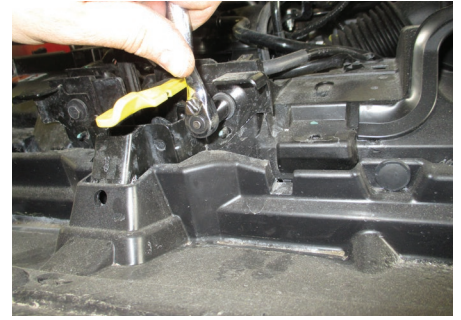
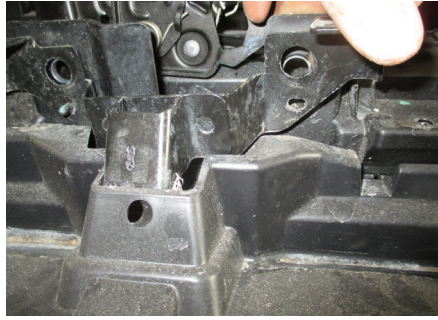


Step 19

Reinstall the hood latch support brace.

For SFE models: Attach the provided driver-side fuse box relocation bracket (#13) to the frame, using the factory hardware. Then, attach the fuse box to the bracket with the supplied 1/4" (#10,#11,#12) and original hardware. Cable ties (#14) are also provided if needed.

If needed, drill two holes in air dam to relocate temperature sensor.



Step 20

On the back side of the front fascia, near the top, mark the area along the outer groove to be trimmed off. Then, use a utility knife to carefully cut off the inner layer only. Be careful not to damage the outer layer.

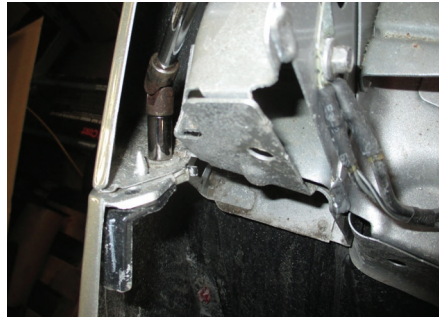
Repeat on the other side of the vehicle.



Step 21

Hold up the front fascia in its original position and mark where it will need to be trimmed to make space for the safety cable loops and attachment tabs. Trim off the marked areas. Then, reinstall the fascia and headlights, making sure to reconnect the electrical harnesses.

When ready to tow, install the tow bar mounting tabs (#4). When not towing, insert the socket plugs (#16) into the ends of the tow bar base plate (#1).



Final Installed Image



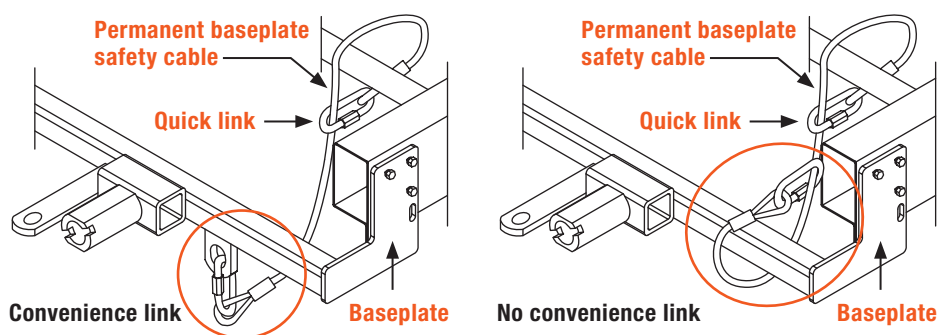
SAFETY CABLE INSTALLATION

Installing the Permanent Base Plate Safety Cables

When dinghy towing a vehicle with a tow bar, base plate safety cables should be used at all times. In the event of a disconnect, the safety cables are designed to help prevent complete vehicle separation. When installing the safety cables, use the illustrations below as a guide.

Installation guidelines

1. The cables must be connected to the base plate and the vehicle frame.
2. Two cables must be installed.
3. Each cable must meet or exceed the gross weight of the towed vehicle.
4. Make sure cables do not pinch or interfere with hoses, wiring or other components.



Note: Base plate safety cables are not a replacement for safety chains connecting the tow vehicle to the towed vehicle.

ADDITIONAL INFORMATION

Towing Tips

Check your equipment

Periodically check the condition of all towing equipment. Ensure all fasteners are tight and that all structural components are sound. Do not tow with worn or damaged parts.

Towing vehicle and trailer manufacturer's recommendations

Review the owner's manual for your towing vehicle and trailer for specific recommendations, capacities and requirements.