

INSTALLATION MANUAL

70111

Level of Difficulty

Difficult

Installation difficulty levels are based on time and effort involved and may vary depending on the installer level of expertise, condition of the vehicle and proper tools and equipment.

Installed Attachment Tabs

Height	17-1/2"
Width	32-1/2"

Parts List

Item	Qty	Description
1	1	Tow bar base plate, driver side
2	1	Tow bar base plate, passenger-side
3	1	Safety cable loop bracket, driver-side
4	1	Safety cable loop bracket, passenger-side
5	2	Tow bar mounting tab
6	2	Safety cable, 7,500 lbs.
7	4	Hex bolt, 1/2"-13 x 5", grade 8
8	4	Conical washer, 1/2"
9	6	Flange nut, 1/2"-13, grade 8
10	2	Carriage bolt, 1/2"-13 x 1-1/4", grade 8
11	2	Quick link, 1/2"
12	2	Socket plug

Tools Required

Torque wrench	Drill
Socket, 3/4"	Drill bit, 17/32"
Socket, 7mm	Flat head screwdriver
Socket, 10mm	Utility knife
Hole saw, 2-1/2" (optional)	Tape measure

⚠ WARNING

Never exceed the vehicle manufacturer's recommended gross vehicle weight rating (GVWR).

Product Photo



Not pictured: Safety cables, quick links and socket plugs

⚠ CAUTION

Take care when cutting any plastic or metal as injury may occur if done improperly.

NOTICE

Before you begin installation, read all instructions thoroughly.

Proper tools will improve the quality of installation and reduce the time required.

This installation requires fascia panels to be temporarily removed and reinstalled. Some drilling and trimming are also required.

To help prevent damage to the product or vehicle, refer to the specified torque specifications when securing hardware during the installation process.

If equipped, we recommend removing the base plate attachment tabs when not in use.

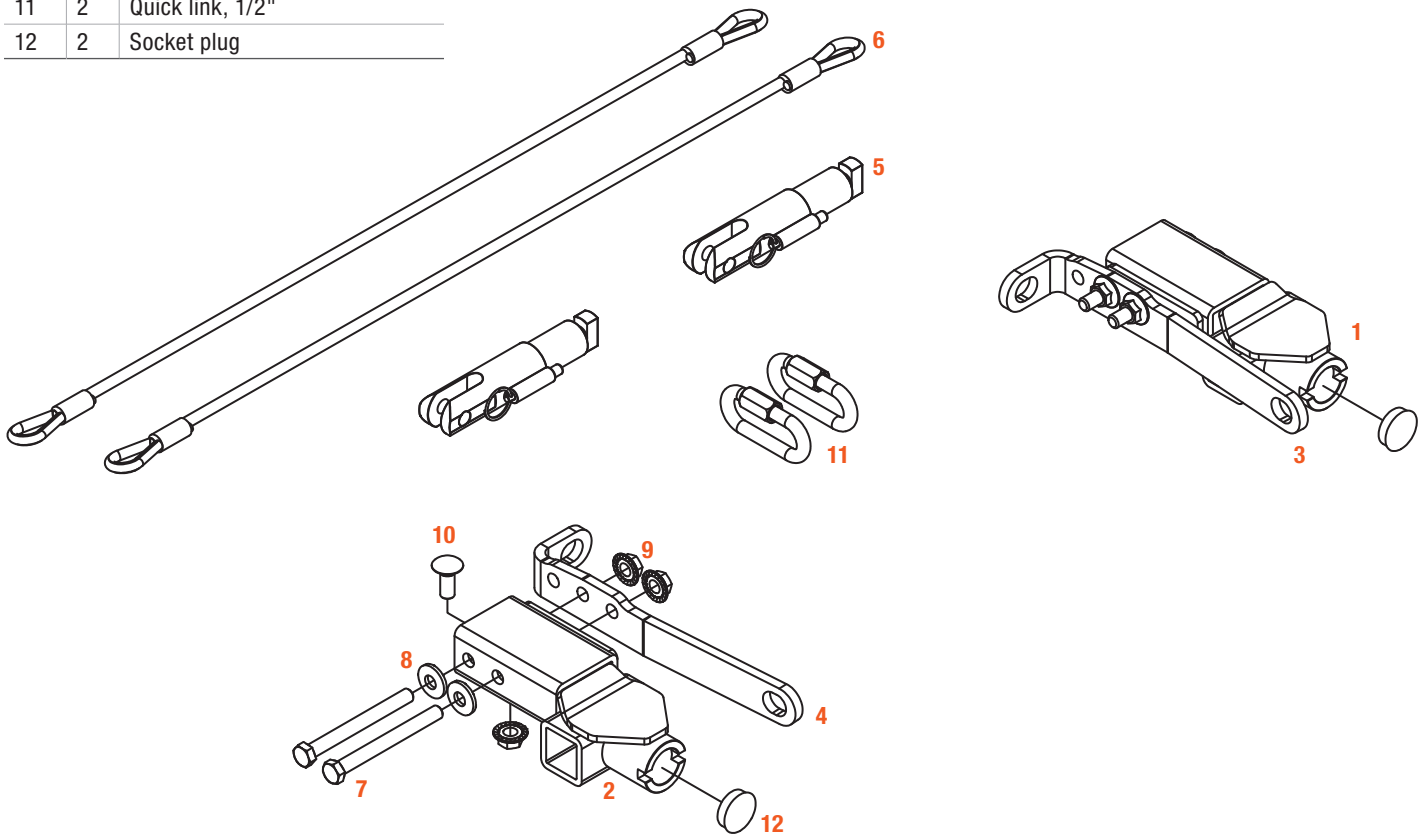
SAFETY INSTRUCTIONS

Safety glasses should be worn at all times while installing this product.

ASSEMBLY

Parts List

Item	Qty	Description
1	1	Tow bar base plate, driver side
2	1	Tow bar base plate, passenger-side
3	1	Safety cable loop bracket, driver-side
4	1	Safety cable loop bracket, passenger-side
5	2	Tow bar mounting tab
6	2	Safety cable, 7,500 lbs.
7	4	Hex bolt, 1/2"-13 x 5", grade 8
8	4	Conical washer, 1/2"
9	6	Flange nut, 1/2"-13, grade 8
10	2	Carriage bolt, 1/2"-13 x 1-1/4", grade 8
11	2	Quick link, 1/2"
12	2	Socket plug



BUMPER REMOVAL

Step 1

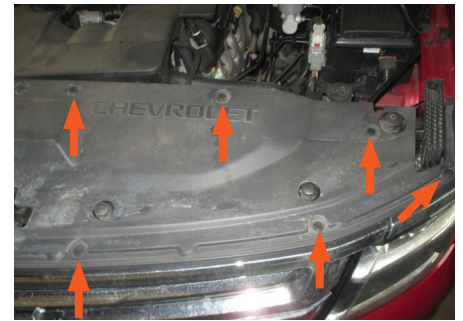
Open the hood and remove the 12 push pins in the top fascia cover. Remove the cover and set it aside.

For GMC Yukon models:

There will only be six push pins.

For Cadillac Escalade models:

There will be 14 push pins.



Step 2

Use a 10mm socket to remove the six bolts along the top edge of the front fascia, three on each side. Then, on the passenger side, unplug the fog light / sensor wiring harness.

For Cadillac Escalade models: There will be eight bolts. Also, there will be two clips holding the wiring harness in place.



Step 3

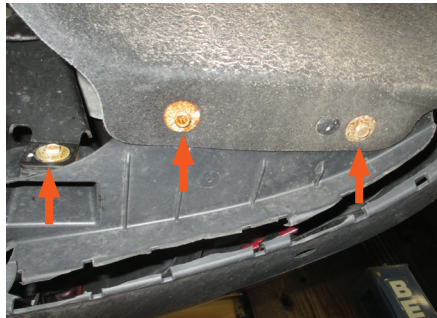
Use a 7mm socket to remove all screws along the inside edge of the wheel well liner (quantity may vary depending on the model).

Repeat on the other side of the vehicle.



Step 4

Use a 10mm socket to remove the eight screws from the underside of the front fascia, three on each side and two in the center. Also, remove the push pin located in front of each tire, one on each side of the vehicle.



Step 5

Starting at the corners, carefully pry the clips holding the front fascia to the fender on each side of the vehicle. Then, unclip the two tabs behind the grille, toward the bottom.



Step 6

Underneath the frame, in front of the tow hook, enlarge the existing hole using a 17/32" drill bit.

Repeat on the other side of the vehicle.



TOW BAR BASE PLATE INSTALLATION

Step 7

Starting on the driver side, slide the tow bar base plates (#1) into the frame and temporarily install the forward-most bolt to help to hold the base plate in position. Then, using the frame and base plate as a template, drill the rearward-most hole for the bolt to pass through the frame (17/32" bit).

Remove the bolts and base plate after drilling.

Repeat on the passenger side (#2).



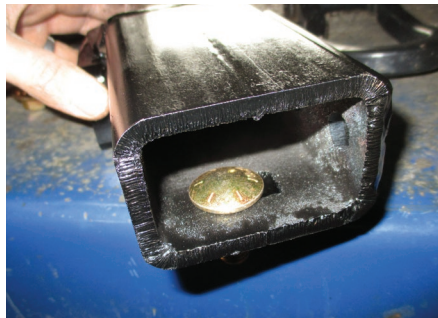
Step 8

Place the 1/2" carriage bolts (#10) into the rectangular slots in the base plates so the head is inside the tube.

Install the driver-side tow bar base plate (#1) into the frame tube and insert the 1/2" hex bolts (#7) with 1/2" conical washers (#8) into the side frame holes. Then, secure the bottom bolt with a 1/2" flange nut (#9) on the outside of the frame.

Torque the bottom hardware to 110 lb-ft. Repeat on the passenger side of the vehicle using the tow bar base plate (#2).

Temporarily remove the 5" long hex bolts.



Step 9

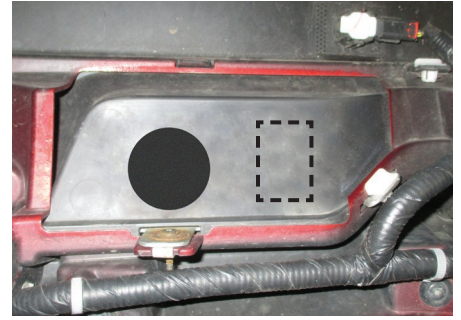
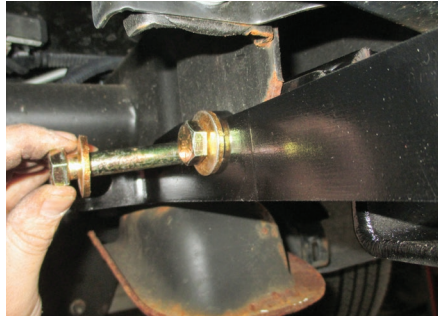
Partially reinstall the front fascia in its original position, temporarily securing it with only a few of the factory screws. Then, press the fascia against the base plates (#1,#2) and mark the areas around each of the base plate receivers. Remove the fascia again and cut out the marked areas, as needed.

For Cadillac Escalade models: The inner layer of plastic behind the fascia will first need to be trimmed out on both sides of the vehicle, before trimming the outer fascia.



Step 10

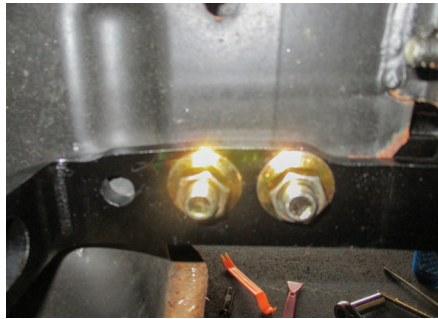
Partially reinstall the fascia again and position the safety cable loop brackets (#3,#4) on the vehicle frame. Mark the areas on the fascia where the loops will pass through. Mark on both sides of the vehicle. Then, remove the fascia and cut out the marked areas.



Step 11

Attach the safety chain loop brackets (#3,#4) onto the vehicle frame, using 1/2" hex bolts (#7) with 1/2" conical washers (#8) and 1/2" hex flange nuts (#9).

Repeat on the other side of the vehicle.
Torque the hardware to 110 lb-ft.



Step 12

Install the permanent safety cables (#6) and quick links (#11), looping them around the vehicle frame and linking them to the safety cable loop brackets (#3,#4). There must be one cable on each side of the vehicle.

Make sure the cables do not pinch or interfere with any hoses, wiring or other components.

See 'Installing the Permanent Base Plate Safety Cables' for additional information.



Step 13

Reinstall the front fascia and top fascia cover.

When ready to tow, install the tow bar mounting tabs (#5). When not towing, insert the socket plugs (#12) into the ends of the tow bar base plates (#1,#2).

Final Installed Image



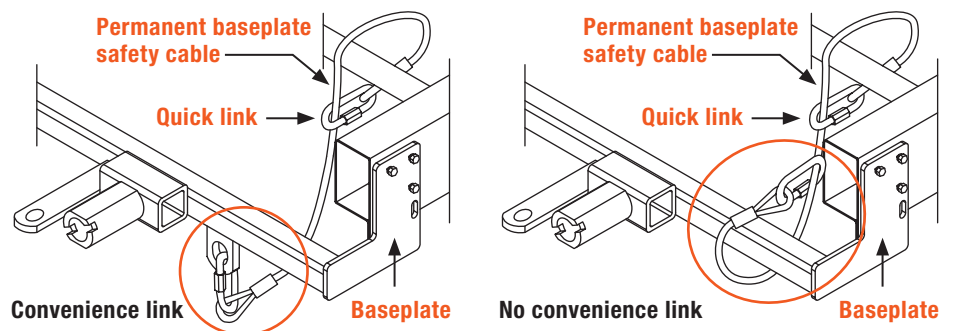
SAFETY CABLE INSTALLATION

Installing the Permanent Base Plate Safety Cables

When dinghy towing a vehicle with a tow bar, base plate safety cables should be used at all times. In the event of a disconnect, the safety cables are designed to help prevent complete vehicle separation. When installing the safety cables, use the illustrations below as a guide.

Installation guidelines

1. The cables must be connected to the base plate and the vehicle frame.
2. Two cables must be installed.
3. Each cable must meet or exceed the gross weight of the towed vehicle.
4. Make sure cables do not pinch or interfere with hoses, wiring or other components.



Note: Base plate safety cables are not a replacement for safety chains connecting the tow vehicle to the towed vehicle.

ADDITIONAL INFORMATION

Towing Tips

Check your equipment

Periodically check the condition of all towing equipment. Ensure all fasteners are tight and that all structural components are sound. Do not tow with worn or damaged parts.

Vehicle manufacturer's recommendations

Review the owner's manual for your towed vehicle and towing vehicle for specific recommendations, capacities and requirements.