

INSTALLATION MANUAL



Level of Difficulty

Easy

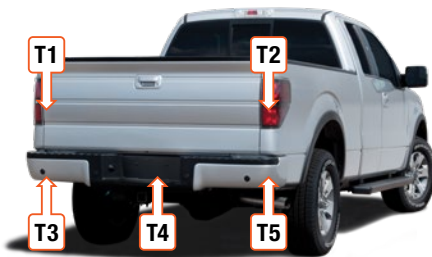
Installation difficulty levels are based on time and effort involved and may vary depending on the installer level of expertise, condition of the vehicle and proper tools and equipment.

Wiring Location(s)

T1 and T2

Wiring Location Guide* for Trucks (T)

T1	Behind driver side taillight housing
T2	Behind passenger side taillight housing
T3	Behind driver side rear bumper
T4	Behind center of rear bumper fascia
T5	Behind passenger side rear bumper



* Representative vehicle shown

Tools Required

Ratchet	Panel trim removal tool
Socket extension	Fish wire
Torx bit, T-25	Cutting tool

⚠ WARNING

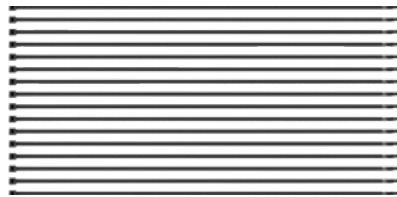
Do not exceed product rating or tow vehicle lamp load rating, whichever is lower.

Be sure not to lay tools across the positive (typically noted with red covers or a red '+' symbol). This can cause a ground to short causing sparks, and / or electrical shocks.

Product Photo



Hardware Photo



NOTICE

Before you begin installation, read all instructions thoroughly.

Proper tools will improve the quality of installation and reduce the time required.

All steps must be followed to ensure the product will function properly. Once installed, test for proper function by using a test light or connecting a properly wired trailer.

Maintenance

Periodic inspection of all wires and connections should be performed to ensure there is no visible damage or loose connections.

Step 1

Locate the vehicle battery(s) and disconnect the negative battery terminal.

Note: Battery will be located on the driver side for gas engines and both sides on diesel engines

Be sure to fasten this wire down and away from the battery while completing the installation process.



Step 2

Lower the tailgate and use a T-25 Torx bit to remove the taillight fasteners on both sides of the vehicle. Remove the taillight by pulling straight back out of the vehicle. Separate the upper connectors taking care not to damage the locking tabs. Set the taillight aside and repeat on the other side.



Step 3

On the driver side of the vehicle, route the yellow wire up from the bottom up to the taillight cavity using a fishwire. Install the custom wiring harness with the yellow wire inbetween the factory harness.

How to Fishwire

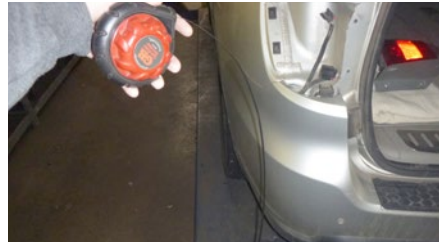
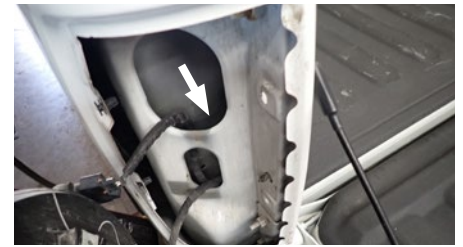
A) Fish wire is a way to push or pull an electrical wire through a blind hole. Make sure the wire is long enough to stick out on the other side.

Insert the fish wire through the blind hole and locate it on the other side.

B) Use tape to secure the harness to the fish wire and pull back up.

The fish wire or harness may get hung up on something, if this happens you may have to push back down, wiggle it around or twist the wire to loosen it from what it's hung up on.

Fish wire could be anything from a cut-up wire hanger, stiff wire, rope or string depending on what is needed for the installation.



Step 4

Route the harness connector with the green wire to the passenger side of the vehicle along the rear bumper. Loosely secure with zip ties, leaving room for adjustments until the harness has been installed to the factory harness.

Repeat step 3 on the passenger side of the vehicle and install the harness into the factory wiring



Step 5

Locate a grounding point such as an existing screw or bolt in the frame of the vehicle or drill a 3/32" pilot hole. The area should be free from rust, dirt, and paint (abrasive pad/paper to remove rust and paint). Secure the white ground wire with the ring terminal on the existing fastener or with the provided ground screw.

⚠ CAUTION

Check for miscellaneous items that may be hidden behind or under any surface before drilling to avoid damage and/or personal injury

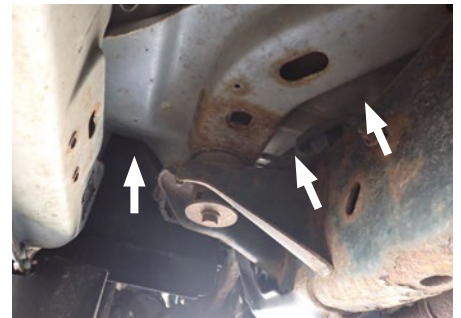
NOTICE

Once the RV harness is installed, verify that the harness is functioning by attaching the 4-flat to any vehicle with functioning trailer lights. The taillights on the tow vehicle should function along with the taillights on the towing vehicle.



Step 6

On the driver side, route the 4-flat along the frame rail up to the rear of the front tire. Loosely secure with zip ties, leaving room for adjustments



Step 7

Once the harness is just behind the driver-side front wheel, route the 4-flat harness to the rear of the driver-side wheel well. Using a fishwire, route the harness down along the inner fender and fire wall. From under the vehicle, pull back the inside of the wheel well lining and the inner fender. Once the wire is at the bottom of the panel, pull the harness up into the engine compartment.



Step 8

Route the 4-flat along the driver-side inner fender. Mount the 4-flat in the front of the vehicle under the hood.



Step 9

Secure any excess wire so that it is not drooping or dangling, but not so tight that it causes unnecessary strain to the wire which could lead to breakage over time. After removing slack from the 4-flat wire, tighten any zip ties and add as needed. Use a zip tie to fasten any excess wire to a solid spot along the driver-side inner fender.

Reinstall all items removed during install. If it was disconnected at the beginning of the installation, reconnect the negative battery terminal. Install the provided 4-flat dust cover to help prevent corrosion.