

# INSTALLATION MANUAL



## Level of Difficulty

Easy

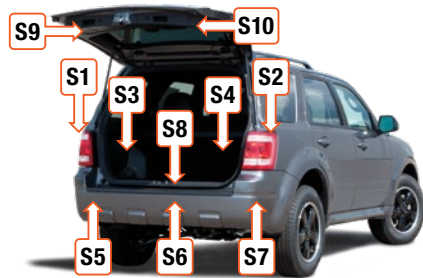
Installation difficulty levels are based on time and effort involved and may vary depending on the installer level of expertise, condition of the vehicle and proper tools and equipment.

## Wiring Location(s)

S1 and S2

## Wiring Location Guide\* for SUVs and Vans (S)

S1	Behind driver side taillight housing
S2	Behind passenger side taillight housing
S3	Behind driver side rear access panel
S4	Behind passenger side rear access panel
S5	Behind driver side rear bumper
S6	Behind center of rear bumper
S7	Behind passenger side rear bumper
S8	Under rear floor panel
S9	Behind driver side rear access panel
S10	Behind passenger side rear access panel



\*Representative vehicle shown

## Tools Required

Ratchet	Panel trim removal tool
Socket, 10mm	Small flathead screwdriver
Socket extension	Phillips screwdriver
Fishwire	Wire cutter

## ⚠ WARNING

Do not exceed product rating or tow vehicle lamp load rating, whichever is lower.

## NOTICE

Before you begin installation, read all instructions thoroughly.

Proper tools will improve the quality of installation and reduce the time required.

All steps must be followed to ensure the product will function properly. Once installed, test for proper function by using a test light or connecting a properly wired trailer.

## Maintenance

Periodic inspection of all wires and connections should be performed to ensure there is no visible damage or loose connections.

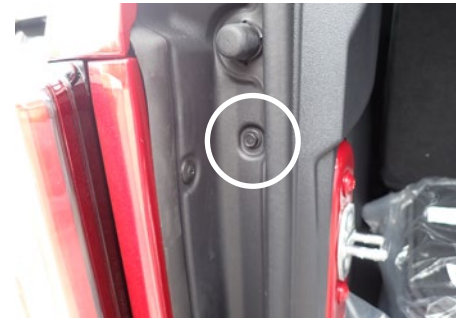
### Step 1

Locate the vehicle battery in the engine compartment on the driver side and disconnect the negative battery terminal. Be sure to fasten this wire down and away from the battery while completing the installation process.



### Step 2

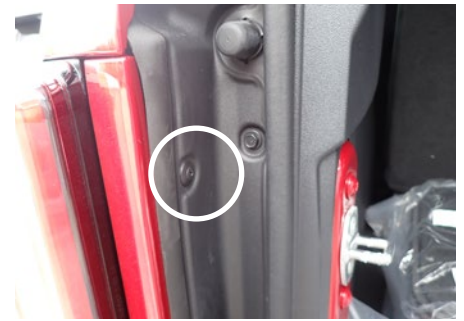
Fully open the tailgate and raise the glass. Use a 10mm socket to remove four bolts, two on each side, securing the taillight trim in place.



### Step 3

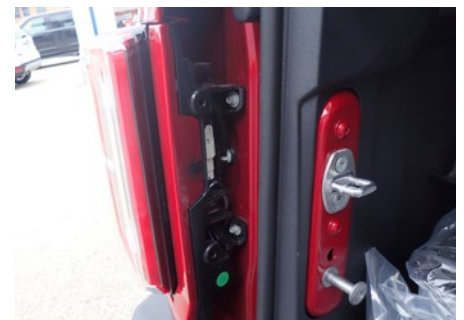
Use a Phillips screwdriver to remove eight screw push fasteners, four on each side securing the taillight trim in place.

**Note:** You may need a small flathead screwdriver to help back out the push fastener screw by adding a little pressure to the backside of the screw.



### Step 4

Remove the taillight panel trim straight out, starting at the bottom and working your way up. Repeat on the other side of the vehicle.



### Step 5

Locate the taillight housing and separate the connectors, taking care not to damage the locking tabs. Repeat this on the other side of the vehicle.



### Step 6

Starting on the driver side, locate the side of the harness with the yellow wire. From underneath the vehicle between the rear tire and the rear bumper, route the wire up between the body and rear bumper (being sure to stay along the inside of the black cloth-taped wire harness in the top left photo to the right).

Route the harness housings up and around the rear bumper and attach to the factory harness and driver-side rear taillight. The yellow wire should route behind the rear door trim removed. Zip tie the harness in place as needed.

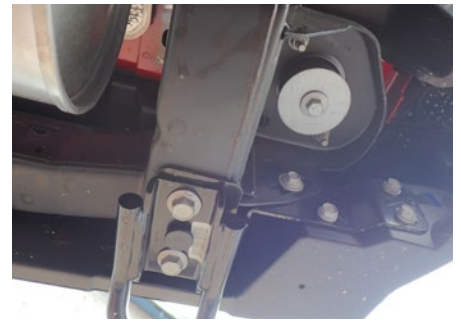
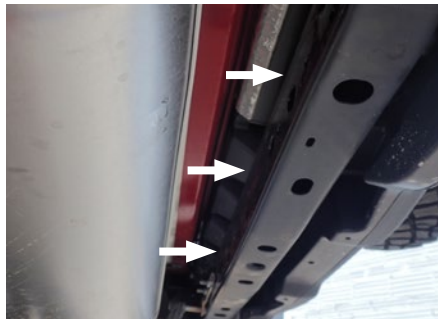




### Step 7

Route the green wire over the vehicle frame on both sides of the vehicle over to the passenger side. Zip tie as needed to the rear bumper.

Repeat step 6 using the green wire.



### Step 8

Locate a grounding point such as an existing screw or bolt in the frame of the vehicle or drill a 3/32" pilot hole. The area should be free from rust, dirt, and paint (abrasive pad/paper to remove rust and paint). Secure the white ground wire with the ring terminal on the existing fastener or with the provided ground screw.

#### **CAUTION**

Check for miscellaneous items that may be hidden behind or under any surface before drilling to avoid damage and/or personal injury

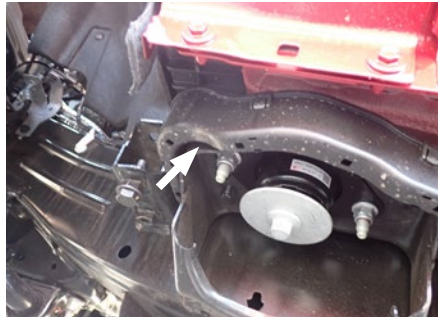
#### **NOTICE**

Once the RV harness is installed, verify that the harness is functioning by attaching the 4-flat to any vehicle with functioning trailer lights. The taillights on the tow vehicle should function along with the taillights on the towing vehicle.



## Step 9

Route the 4-flat along the top of the driver-side frame rail to just behind the driver-side front tire. Loosely secure any excess wire so that it is not drooping or dangling and tighten later.



## Step 10

### How to Fishwire

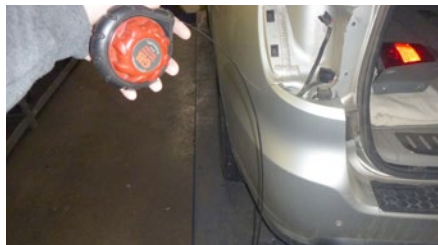
**A)** Fish wire is a way to push or pull an electrical wire through a blind hole. Make sure the wire is long enough to stick out on the other side.

Insert the fish wire through the blind hole and locate it on the other side.

**B)** Use tape to secure the harness to the fish wire and pull back up.

The fish wire or harness may get hung up on something, if this happens you may have to push back down, wiggle it around or twist the wire to loosen it from what it's hung up on.

Fish wire could be anything from a cut-up wire hanger, stiff wire, rope or string depending on what is needed for the installation.



## Step 11

Pull the 4-flat up between the inner and outer fender and route the 4-flat along the driver-side inner fender and to the front of the vehicle.

Secure any excess wire so that it is not drooping or dangling, but not so tight that it causes unnecessary strain to the wire which could lead to breakage over time. After removing slack from the 4-flat wire, tighten any zip ties and add as needed. Use a zip tie to fasten any excess wire to a solid spot along the driver-side inner fender.

Reinstall all items removed during install. If it was disconnected at the beginning of the installation, reconnect the negative battery terminal. Install the provided 4-flat dust cover to help prevent corrosion.

