

# INSTALLATION MANUAL



## Level of Difficulty

Easy

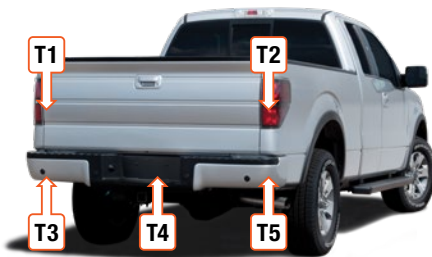
Installation difficulty levels are based on time and effort involved and may vary depending on the installer level of expertise, condition of the vehicle and proper tools and equipment.

## Wiring Location(s)

T1 and T2

## Wiring Location Guide\* for Trucks (T)

T1	Behind driver side taillight housing
T2	Behind passenger side taillight housing
T3	Behind driver side rear bumper
T4	Behind center of rear bumper fascia
T5	Behind passenger side rear bumper



\* Representative vehicle shown

## Tools Required

Ratchet	Fish wire
Socket, 8mm	Drill
Socket extension	3/32" drill bit
Cutting tool	--

## ⚠ WARNING

Do not exceed product rating or tow vehicle lamp load rating, whichever is lower.

Be sure not to lay tools across the positive (typically noted with red covers or a red '+' symbol). This can cause a ground to short causing sparks, and / or electrical shocks.

## Product Photo



## NOTICE

Before you begin installation, read all instructions thoroughly.

Proper tools will improve the quality of installation and reduce the time required.

All steps must be followed to ensure the product will function properly. Once installed, test for proper function by using a test light or connecting a properly wired trailer.

## Maintenance

Periodic inspection of all wires and connections should be performed to ensure there is no visible damage or loose connections.

### Step 1

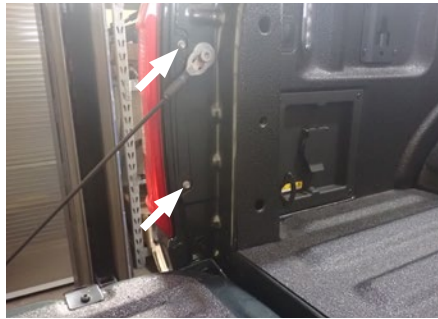
Locate the vehicle battery and disconnect the negative battery terminal. Be sure to fasten this wire down and away from the battery while completing the installation process.



### Step 2

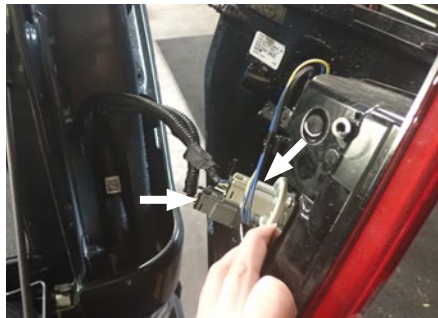
Open the tailgate. Use an 8mm socket to remove two bolts securing the taillights in place.

Repeat on the other side of the vehicle.



### Step 3

Remove the taillight by pulling straight back. Carefully remove the connectors, taking care not to damage the locking tabs on the back. Set the taillight off to the side and repeat on the other side of the vehicle.



## Step 4

Beginning on the driver side of the vehicle, drop a fish wire down inside the box where the taillight was removed. From under the vehicle, attach the yellow wire to the fish wire and pull up into the taillight opening. Attach the RV harness to the taillight. Re-attach the factory harness to the taillight and to the RV harness.

### How to Fishwire

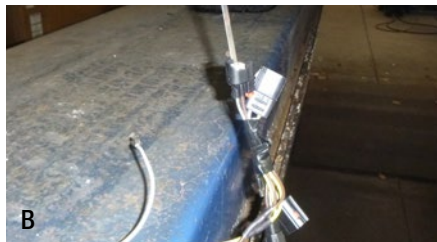
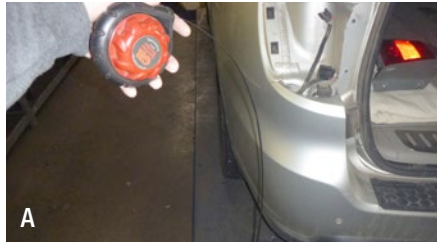
**A)** Fish wire is a way to push or pull an electrical wire through a blind hole. Make sure the wire is long enough to stick out on the other side.

Insert the fish wire through the blind hole and locate it on the other side.

**B)** Use tape to secure the harness to the fish wire and pull back up.

The fish wire or harness may get hung up on something, if this happens you may have to push back down, wiggle it around or twist the wire to loosen it from what it's hung up on.

Fish wire could be anything from a cut-up wire hanger, stiff wire, rope or string depending on what is needed for the installation.



## Step 5

Route the green wire over to the passenger side. Zip tie as needed to the rear bumper.

Repeat step 4 using the green wire.

## Step 6

Locate a grounding point such as an existing screw or bolt in the frame of the vehicle or drill a 3/32" pilot hole. The area should be free from rust, dirt, and paint (abrasive pad/paper to remove rust and paint). Secure the white ground wire with the ring terminal on the existing fastener or with the provided ground screw.

### CAUTION

Check for miscellaneous items that may be hidden behind or under any surface before drilling to avoid damage and/or personal injury

### NOTICE

Once the RV harness is installed, verify that the harness is functioning by attaching the 4-flat to any vehicle with functioning trailer lights. The taillights on the tow vehicle should function along with the taillights on the towing vehicle.



### Step 7

Route the 4-flat harness above the frame and below the bed of the truck and along the driver-side frame rail to the front of the truck.



### Step 8

Once the harness is just behind the driver-side front wheel, route the 4-flat harness to the rear of the driver-side wheel well. Next, route over to the driver-side rear inner wheel well



### Step 9

From the engine compartment on the driver side next to the hood hinge, run a fishwire down between the inner fender and the outer fender. Pull the wheel well panel back and locate the end of the fishwire. Attach the 4-flat to the fishwire and pull to the top of the engine compartment.



### Step 10

Pull the 4-flat up between the inner and outer fender and route the 4-flat along the driver-side inner fender and under the air intake to the front of the truck.

Secure any excess wire so that it is not drooping or dangling, but not so tight that it causes unnecessary strain to the wire which could lead to breakage over time. After removing slack from the 4-flat wire, tighten any zip ties and add as needed. Use a zip tie to fasten any excess wire to a solid spot along the driver-side inner fender.

Reinstall all items removed during install. If it was disconnected at the beginning of the installation, reconnect the negative battery terminal. Install the provided 4-flat dust cover to help prevent corrosion.

