

INSTALLATION MANUAL



Level of Difficulty

Easy

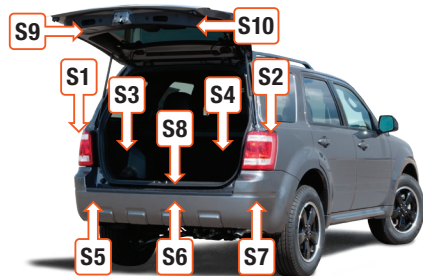
Installation difficulty levels are based on time and effort involved and may vary depending on the installer level of expertise, condition of the vehicle and proper tools and equipment.

Wiring Location(s)

S3 and S4

Wiring Location Guide* for SUVs and Vans (S)

S1	Behind driver side taillight housing
S2	Behind passenger side taillight housing
S3	Behind driver side rear access panel
S4	Behind passenger side rear access panel
S5	Behind driver side rear bumper
S6	Behind center of rear bumper
S7	Behind passenger side rear bumper
S8	Under rear floor panel
S9	Behind driver side rear access panel
S10	Behind passenger side rear access panel



*Representative vehicle shown

Tools Required

Ratchet	Wire crimper
Socket, 7mm	Wire stripper
Socket extension	Electrical tape
Flathead screwdriver	Panel trim removal tool
Cutting tool	

⚠ WARNING

Do not exceed product rating or tow vehicle lamp load rating, whichever is lower.

NOTICE

Before you begin installation, read all instructions thoroughly.

Proper tools will improve the quality of installation and reduce the time required.

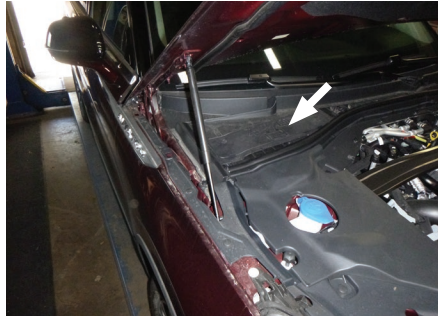
All steps must be followed to ensure the product will function properly. Once installed, test for proper function by using a test light or connecting a properly wired trailer.

Maintenance

Periodic inspection of all wires and connections should be performed to ensure there is no visible damage or loose connections.

Step 1

Locate the vehicle's battery in the engine compartment on the driver side and disconnect the negative battery terminal. Be sure to fasten this wire down and away from the battery while completing the installation process.



Step 2

Open the trunk. Place third row seats in the down position. Remove the floor coverings to expose the spare tire.



Step 3

Using a panel trim removal tool, release the push fasteners securing the skid plate in place. Separate the hatch sensor connector taking care not to damage the locking tabs. Set the skid plate aside.

Use the panel trim removal tool to remove the side panel pockets.



Step 4

Using a small flathead screwdriver, remove the trim covers from the cargo tie-down points.

Use a 7mm socket to remove the cargo tie-downs.



Step 5

Starting on the driver side, use a panel trim removal tool to loosen the sidewall panels. Locate the taillight housing and separate the connectors taking care not to damage the locking tabs. Install the housing with the yellow wire in between the separated connectors. Make sure the connectors are fully inserted with locking tabs in place.



Step 6

Locate a suitable grounding point near the connector such as an existing screw with nut in the vehicle frame or drill a 3/32" pilot hole for the provided screw. The area should be free of rust, dirt and paint. Secure the white ground wire using the ring terminal and provided screw.

WARNING

Check for miscellaneous items that may be hidden behind or under any surface before drilling to avoid damage and / or personal injury.

Step 7

Repeat steps 4 through 5 on the passenger side. Route the green wire along the back of the vehicle to the passenger side. Install the harness in between the main harness and the taillight.

NOTICE

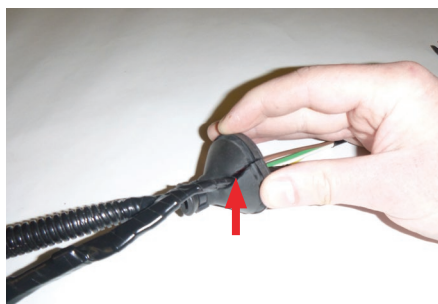
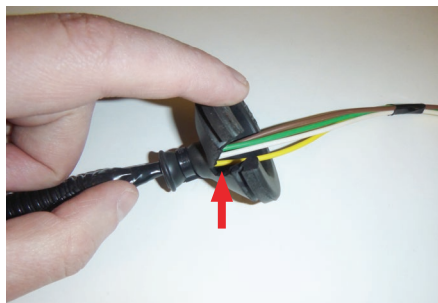
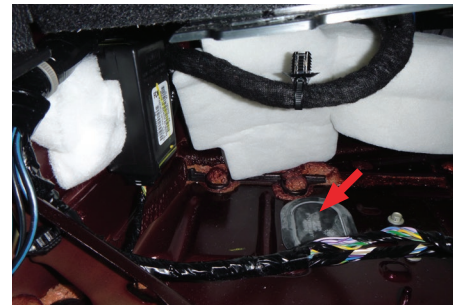
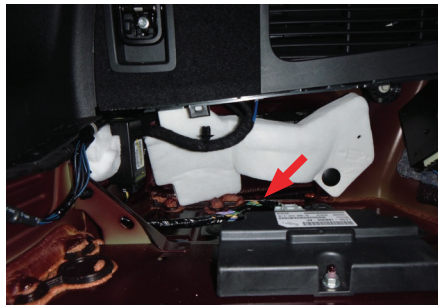
Once the RV harness is installed, verify that the harness is functioning by attaching the 4-way flat to any vehicle with functioning taillights. The taillights on the vehicle to be towed should function along with the taillights on the vehicle that is powering them.

Step 8

Locate the grommet on the driver-side on the floor.

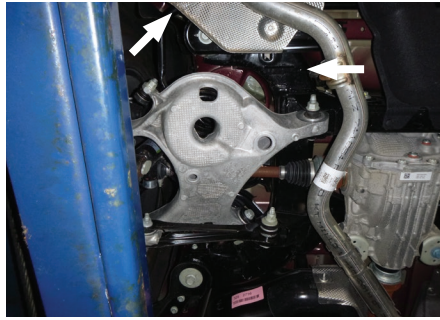
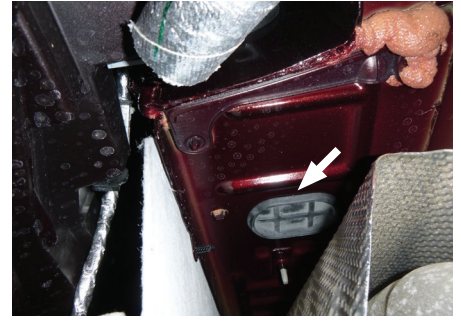
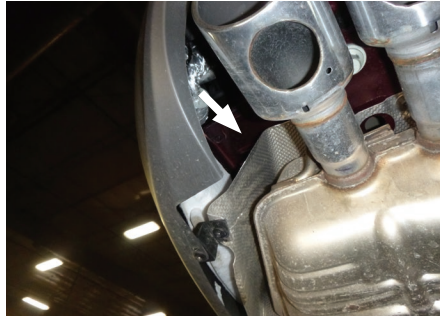
Remove the grommet from the body of the vehicle. Using a wire cutter, make a cut into the grommet big enough to allow the wiring to be placed inside the mounting groove of the grommet. Be careful not to cut any wires.

Reseat the grommet. Use the provided sealant to seal the cut in the grommet and around all the wires. Apply additional sealant as needed once the grommet has been reseated to ensure a tight seal. This will keep the trunk dry and exhaust out of the vehicle.



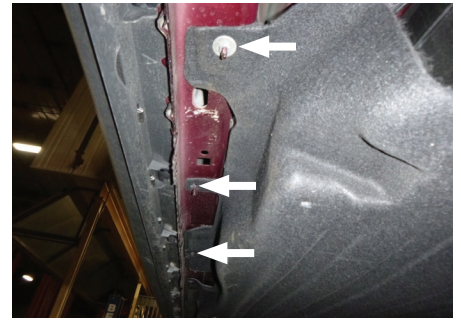
Step 9

The 4-flat will come out just above the driver-side exhaust. Continue to route out behind the muffler, above the rear suspension to the back side of the fuel tank. Route the 4-flat along the edge of the fuel tank.



Step 10

Using a 10mm socket, loosen the fasteners securing the felt skid plates to the rear of the fuel tank to just behind the front tire. Route the 4-flat between the body and the skid plates. Zip tie as needed to secure the wires in place.



Step 11

Route the 4-flat over to the rear of the driver-side front wheel well. Use fish wire to route from the top and down in between the inner and outer fender. Pull the 4-flat up to the engine compartment

How to Fishwire

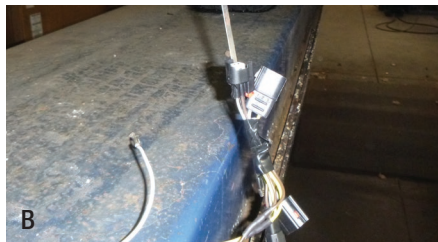
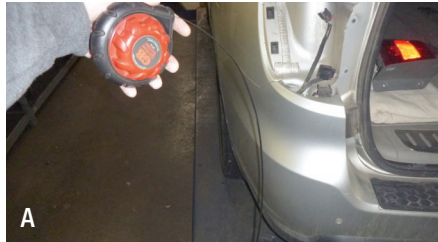
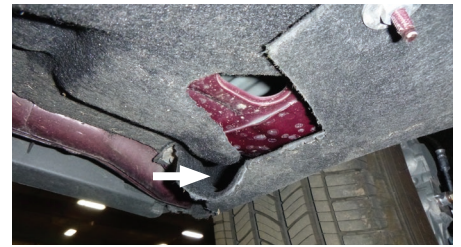
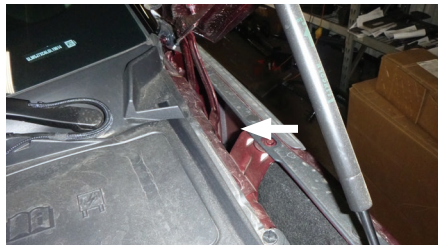
A) Fish wire is a way to push or pull an electrical wire through a blind hole. Make sure the wire is long enough to stick out on the other side.

Insert the fish wire through the blind hole and locate it on the other side.

B) Use tape to secure the harness to the fish wire and pull back up.

The fish wire or harness may get hung up on something, if this happens you may have to push back down, wiggle it around or twist the wire to loosen it from what it's hung up on.

Fish wire could be anything from a cut-up wire hanger, stiff wire, rope or string depending on what is needed for the installation.



Step 12

Route the 4-flat along the driver-side inner fender to the front of the engine compartment



Step 13

Pull all of the excess wire so that it is not loose. Do not pull it too tight, this can cause unnecessary strain on the wire and could cause a breakage over time. After removing all slack from the 4-flat wire, tighten any cable ties and add as needed. Use a cable tie to fasten any excess wire to a solid spot along the driver's side inner fender.

Reinstall all items removed during install. If it was disconnected at the beginning of the installation, reconnect the negative battery terminal. Install the provided 4-flat dust cover to help prevent corrosion.