

INSTALLATION MANUAL



Level of Difficulty

Moderate

WARNING

Do not exceed product rating or tow vehicle lamp load rating, whichever is lower.

Wiring Location(s)

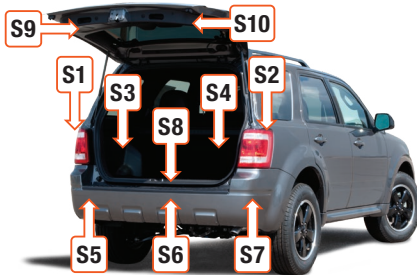
S1 and S2

Product Photo



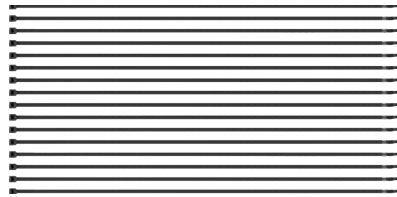
Wiring Location Guide* for SUVs and Vans (S)

S1	Behind driver side taillight housing
S2	Behind passenger side taillight housing
S3	Behind driver side rear access panel
S4	Behind passenger side rear access panel
S5	Behind driver side rear bumper
S6	Behind center of rear bumper
S7	Behind passenger side rear bumper
S8	Under rear floor panel
S9	Behind driver side rear access panel
S10	Behind passenger side rear access panel



* Representative vehicle shown

Hardware Photo



Tools Required

Phillips screwdriver	Panel trim removal tool
Drill	Cutting tool
Drill bit, 3/32"	Electrical tape

NOTICE

Before you begin installation, read all instructions thoroughly.

Proper tools will improve the quality of installation and reduce the time required.

All steps must be followed to ensure the product will function properly. Once installed, test for proper function by using a test light or connecting a properly wired trailer.

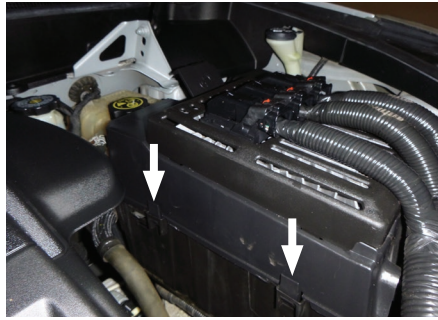
Maintenance

Periodic inspection of all wires and connections should be performed to ensure there is no visible damage or loose connections.

Step 1

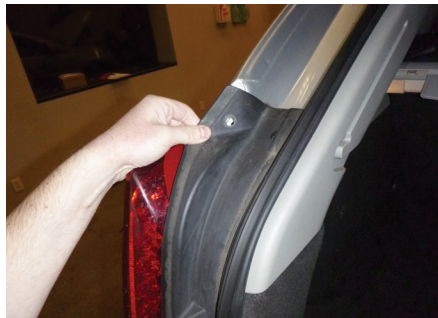
Locate the vehicle battery.
Look up the battery location in
the owner's manual of your vehicle.

Remove the battery cover. Each side has two
tabs that need to be released. Remove the
cover by lifting straight up. Disconnect the
negative battery terminal. Be sure to fasten
this wire down and away from the battery
when completing the installation process.



Step 2

Open the rear hatch. Starting on the driver
side, use a panel trim removal tool to remove
the push fastener. Remove the rubber trim
cover straight back. Remove the pressure
clips securing the trim cover by hand.



Step 3

Remove the two Phillips head screws securing the taillight to the vehicle. Carefully remove the taillight by pulling straight back.

Locate the vehicle taillight wiring connectors. The connectors will be similar to those on your new custom wiring product. Separate the three connectors from the taillight housing taking care not to damage the locking tabs. Set the taillight aside.



Step 4

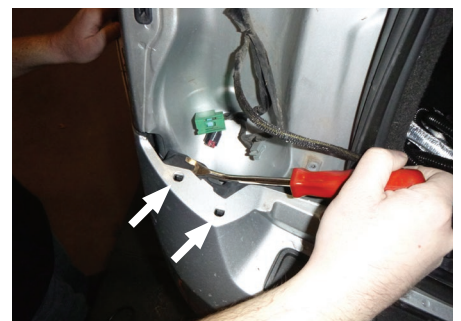
⚠ CAUTION

This step should not be done in cold conditions. Let the vehicle sit in a warm area to prevent cracking of paint or breaking of plastic.

Remove the two Phillips head screws in the rear wheel well liner. Use your fingers to gently pull outward from the vehicle on the bumper cover, separating it from the body of the vehicle.

Work your way around to the rear of the vehicle, applying some pressure to the bumper cover in the taillight pocket with a panel trim removal tool to completely release the whole corner of the bumper cover.

Repeat steps 2 through 4 on the passenger side of the vehicle.



Step 5

Locate the custom RV harness end with the yellow wire and feed the harness in behind the bumper cover from behind the edge loosened just behind the rear tire.

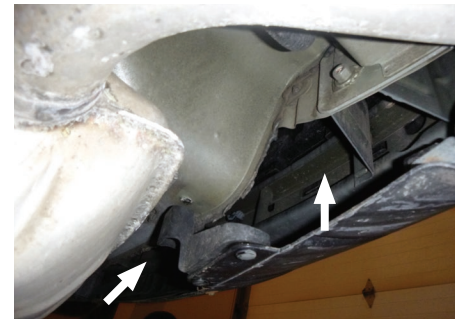
Route the wire into the groove where the factory harness comes up behind the bumper cover. Connect the custom harness to the factory harness, making sure the connectors are fully inserted with the locking tabs in place.



Step 6

Route the harness so that it drops down just above the driver-side exhaust tip. Locate the harness end with the green wire and route it along the rear bumper. Loosely zip tie in place.

Once routed to the passenger side, repeat step 6 on the passenger side of the vehicle.



Step 7

Locate a grounding point near the box such as an existing screw or bolt in the frame of the vehicle or drill a 3/32" pilot hole. The area should be free from rust, dirt, and paint (abrasive pad/paper to remove rust and paint). Secure the white ground wire with the ring terminal on the existing fastener or with the provided ground screw.

CAUTION

Check for miscellaneous items that may be hidden behind or under any surface before drilling to avoid damage and/or personal injury

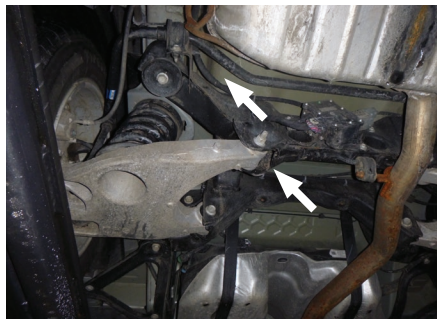
NOTICE

Once the custom wiring harness is installed, verify that the harness is functioning by attaching the 4-flat to any vehicle with functioning trailer lights. The taillights on the tow vehicle should function along with the taillights on the towing vehicle.

Step 8

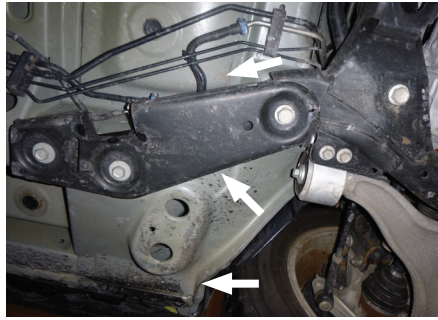
Route the 4-flat wires on the driver side above the rear suspension. Zip tie as needed to keep the 4-flat away from hot spots, pinch points or moving objects.

Route the 4-flat between the driver-side sub frame and the fuel tank.



Step 9

At the front of the fuel tank, find the hard fuel and brake lines. Route the 4-flat along these lines to the rear of the front wheel. Once you have reached the front wheel, route the 4-flat between the vehicle body and the front suspension mount.



Step 10A

Use a fish wire to feed the wire down in between the body and the driver-side front fender. From under the vehicle, pull back the inner wheel well, locate the fish wire and attach to the 4-flat. Pull the 4-flat between the vehicle body and the front fender.



Step 10B - How to use fish wire

A) Fish wire is a way to push or pull an electrical wire through a blind hole. Make sure the wire is long enough to stick out on the other side.

Insert the fish wire through the blind hole and locate it on the other side.

B) Use tape to secure the harness to the fish wire and pull back up.

The fish wire or harness may get hung up on something, if this happens you may have to push back down, wiggle it around or twist the wire to loosen it from what it's hung up on.

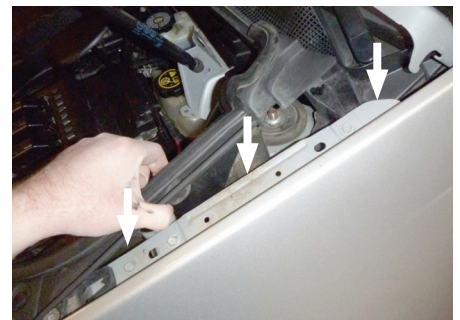
Fish wire could be anything from a cut-up wire hanger, stiff wire, rope or string depending on what is needed for the installation.



Step 11

Use the panel trim removal tool to remove the push fastener in the engine compartment weather stripping. Route the 4-flat under the weather stripping and along the driver-side inner fender. Once you're past the windshield washer fluid tank, route the 4-flat down under the trim and mount near the battery, just behind the headlight in the engine compartment.

Replace the weather stripping and push fastener and zip tie as needed to the front of the vehicle. Route to just behind the passenger-side headlight and mount to the inner fender.



Step 12

Secure any excess wire so that it is not drooping or dangling, but not so tight that it causes unnecessary strain to the wire which could lead to breakage over time. After removing slack from the 4-flat wire, tighten any zip ties and add as needed. Use a zip tie to fasten any excess wire to a solid spot along the driver-side inner fender.

Reinstall all items removed during install. If it was disconnected at the beginning of the installation, reconnect the negative battery terminal. Install the provided 4-flat dust cover to help prevent corrosion.