

# INSTALLATION MANUAL



## Level of Difficulty

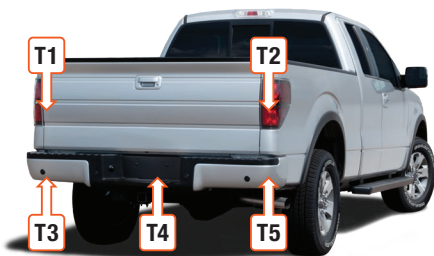
Easy

## Wiring Location(s)

T4

## Wiring Location Guide\* for Trucks (T)

|    |   |
|----|---|
| T1 | Behind driver side taillight housing    |
| T2 | Behind passenger side taillight housing |
| T3 | Behind driver side rear bumper          |
| T4 | Behind center of rear bumper fascia     |
| T5 | Behind passenger side rear bumper       |



\* Representative vehicle shown

## Tools Required

|              |                         |
|--------------|-------------------------|
| Cutting tool | Panel trim removal tool |
| Fish wire    |                         |

## ⚠ WARNING

Do not exceed product rating or tow vehicle lamp load rating, whichever is lower.

## NOTICE

Before you begin installation, read all instructions thoroughly.

Proper tools will improve the quality of installation and reduce the time required.

All steps must be followed to ensure the product will function properly. Once installed, test for proper function by using a test light or connecting a properly wired trailer.

## Maintenance

Periodic inspection of all wires and connections should be performed to ensure there is no visible damage or loose connections.

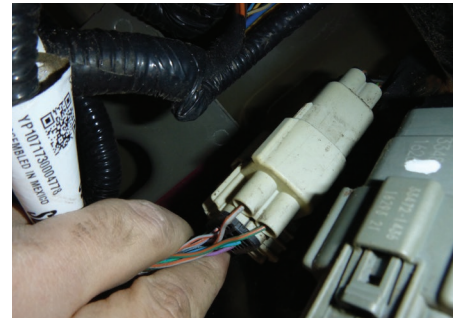
### Step 1

Locate the vehicle battery. Look up the battery location in the owner's manual of your vehicle. Disconnect the negative battery terminal. Be sure to fasten this wire down and away from the battery when completing the installation process.



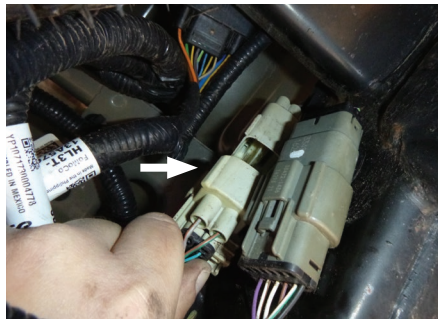
### Step 2

On the rear driver side between the frame rail and the spare tire, locate the harness. The harness will be similar to your new RV harness product. Separate the harness from the mating housing by releasing the locking tabs.



### Step 3

Install the custom RV harness in between the factory wiring.



### Step 4

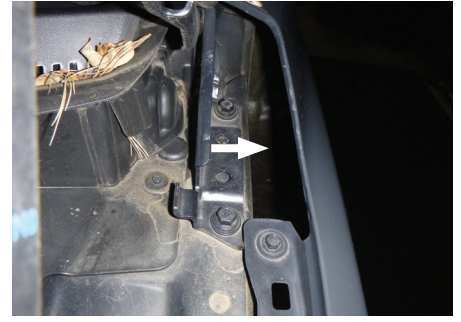
Route the 4 flat wire above the frame rail on the driver side to the front of the vehicle.

Use the provided cable ties to loosely secure the wire along the frame rail as needed.



### Step 5

Once the 4-flat has reached just behind the front tire, use a fish wire between the inner and outer fender to route through to where the fender and wheel well meet.



### Step 6 - How to use fish wire

**A)** Fish wire is a way to push or pull an electrical wire through a blind hole. Make sure the wire is long enough to stick out on the other side.

Insert the fish wire through the blind hole and locate it on the other side.

**B)** Use tape to secure the harness to the fish wire and pull back up.

The fish wire or harness may get hung up on something, if this happens you may have to push back down, wiggle it around or twist the wire to loosen it from what it's hung up on.

Fish wire could be anything from a cut-up wire hanger, stiff wire, rope or string depending on what is needed for the installation.



### Step 7

Attach the 4-flat to the fish wire and pull up to the top of the engine compartment. Finish routing the 4-flat wire around the body mount and above the sub frame, out of the way of any possible road debris, and up in between the inner and outer fender.





### Step 8

Route the 4-flat wire along the driver-side inner fender, and under the air box mount. Mount the 4-flat just behind the driver-side headlight.



### Step 9

Secure any excess wire so that it is not drooping or dangling, but not so tight that it causes unnecessary strain to the wire which could lead to breakage over time. After removing slack from the 4-flat wire, tighten any zip ties and add as needed. Use a zip tie to fasten any excess wire to a solid spot along the driver-side inner fender.

Reinstall all items removed during install. If it was disconnected at the beginning of the installation, reconnect the negative battery terminal. Install the provided 4-flat dust cover to help prevent corrosion.