

# INSTALLATION MANUAL

## Level of Difficulty

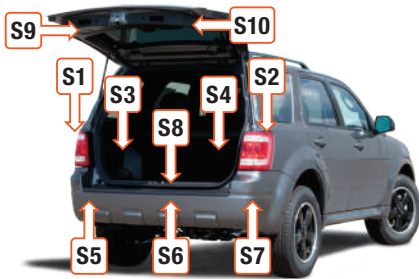
Moderate

## Wiring Location(s)

S1 and S2

## Wiring Location Guide\* for SUVs and Vans (S)

S1	Behind driver side taillight housing
S2	Behind passenger side taillight housing
S3	Behind driver side rear access panel
S4	Behind passenger side rear access panel
S5	Behind driver side rear bumper
S6	Behind center of rear bumper
S7	Behind passenger side rear bumper
S8	Under rear floor panel
S9	Behind driver side rear access panel
S10	Behind passenger side rear access panel



\* Representative vehicle shown

## Tools Required

Socket, 1/4"	Ratchet
Socket, 10 mm	Torx bit, T-27
Socket, 13 mm	Fish wire
Socket extension	Electrical tape

## Step 1

Locate the vehicle battery. Look up the battery location in the owner's manual of your vehicle. Disconnect the negative battery terminal. Be sure to fasten this wire down and away from the battery when completing the installation process.



## ⚠ WARNING

Do not exceed product rating or tow vehicle lamp load rating, whichever is lower.

## NOTICE

Before you begin installation, read all instructions thoroughly.

Proper tools will improve the quality of installation and reduce the time required.

All steps must be followed to ensure the product will function properly. Once installed, test for proper function by using a test light or connecting a properly wired trailer.

## Maintenance

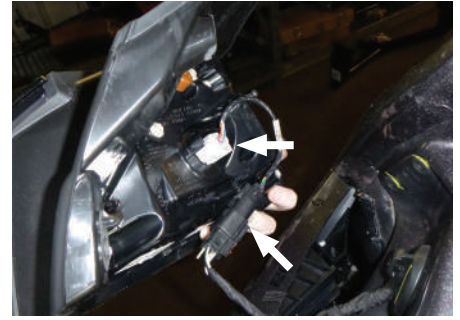
Periodic inspection of all wires and connections should be performed to ensure there is no visible damage or loose connections.

## Step 2

Open the rear door of the vehicle. Use a Torx T-27 bit to loosen the two screws securing the taillight in place. Remove the taillight by pulling straight back.

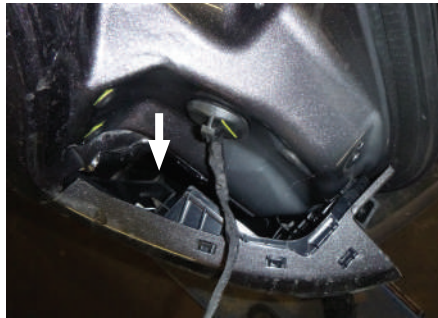
Separate the connectors, taking care not to damage the locking tabs. Set the taillight aside.

Repeat on the other side of the vehicle.



## Step 3

Starting on the driver side, run a fish wire down between the body and the bumper cover. From under the vehicle locate the side of the custom RV harness with the yellow wire. Attach the yellow wire to the fish wire and pull the harness up to the factory harness.



## Step 4 - How to use fish wire

**A)** Fish wire is a way to push or pull an electrical wire through a blind hole. Make sure the wire is long enough to stick out on the other side.

Insert the fish wire through the blind hole and locate it on the other side.

**B)** Use tape to secure the harness to the fish wire and pull back up.

The fish wire or harness may get hung up on something, if this happens you may have to push back down, wiggle it around or twist the wire to loosen it from what it's hung up on.

Fish wire could be anything from a cut-up wire hanger, stiff wire, rope or string depending on what is needed for the installation.



## Step 5

Once you reach the taillight opening, insert the custom wiring harness into the factory wiring. Make sure the connectors are fully inserted with the locking tabs in place. Install the taillight back into the taillight housing.



### Step 6

From under the vehicle, route the harness with the green wire along the backside of the bumper to the passenger side of the vehicle. Secure any loose wires with the provided cable ties.

Repeat steps 3 and 4 with the green wire of the harness.



### Step 7

Locate a grounding point near the box such as an existing screw or bolt in the frame of the vehicle or drill a 3/32" pilot hole. The area should be free from rust, dirt, and paint (Use abrasive pad/paper to remove rust and paint). Secure the white ground wire with the ring terminal on the existing fastener or with the provided ground screw.

#### **WARNING**

Check for miscellaneous items that may be hidden behind or under any surface before drilling to avoid damage and / or personal injury.

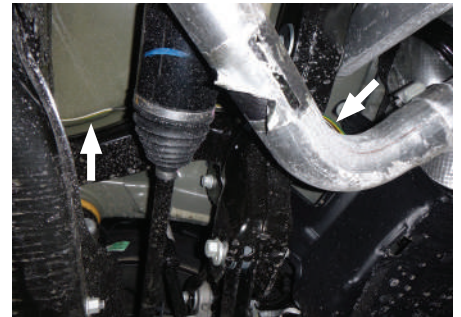
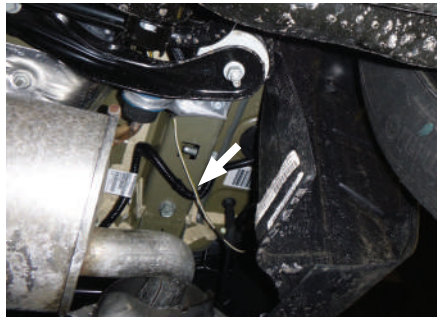
#### **NOTICE**

Once the custom wiring harness is installed, verify that the harness is functioning by attaching the 4-flat to any vehicle with functioning trailer lights. The taillights on the tow vehicle should function along with the taillights on the towing vehicle.

Install your vehicle RV wiring harness add-on, allowing your RV harness to also act as a trailer light harness.

### Step 8

Route the 4-flat wire in between the rear drive line mounts and the body. Use the provided cable ties to secure the wires away from moving and hot objects.



### Step 9

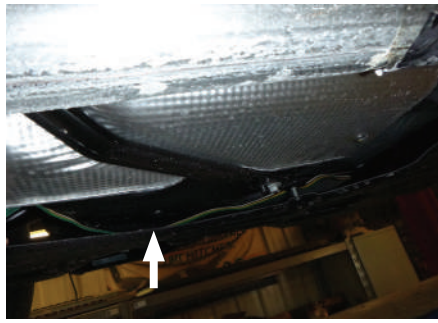
Once to the front side of the transaxle, locate the plastic skid plate. Remove the four 10 mm bolts, one 10 mm nut, and one 13mm bolt.



### Step 10

Route the 4-flat wire under the skid plate and along the brake lines until you reach the rear of the front tire.

Use the provided zip ties as needed to secure any loose wire.



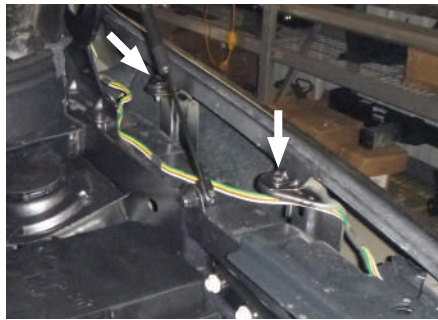
### Step 11

From the driver-side engine compartment, use the fish wire between the inner fender and the exterior fender to route the 4-flat up to the engine compartment. Locate the end of the fish wire just behind the inner fender/ wheel well, and attach to the fish wire and pull to the top side of the engine compartment.



### Step 12

Route the 4-flat along the driver side outer fender. Be sure to route under the two fender mounts. Route the 4-flat under the plastic shroud covering the driver-side front head lights. Mount to the front core support between the windshield washer fluid reservoir and the coolant reservoir.



### Step 13

Secure any excess wire so that it is not drooping or dangling, but not so tight that it causes unnecessary strain to the wire which could lead to breakage over time. After removing slack from the 4-flat wire, tighten any zip ties and add as needed. Use a zip tie to fasten any excess wire to a solid spot along the driver-side inner fender.

Reinstall all items removed during install. If it was disconnected at the beginning of the installation, reconnect the negative battery terminal. Install the provided 4-flat dust cover to help prevent corrosion.