

RV TOW Harness Wiring Kit

INSTALLATION INSTRUCTIONS

Fits: Fiat 500

- Kit Includes:
- (1) Wiring Harness with 4-Flat Connector
 - (1) 48" 4-Flat Extension
 - (20) 15" Cable Tie
 - (1) 4-Flat Bracket
 - (2) Adhesive Cable Tie Pad
 - (3) #8 Self-Tapping Ground Screw

RV TOW HARNESS INSTALLATION INSTRUCTIONS

1. Read instructions thoroughly before beginning.
2. Open rear hatch and using a 11mm socket remove screws holding taillights on driver and passenger side shown in **Figure 1**. Gently pull taillights away from vehicle taking care not to damage the alignment tabs.

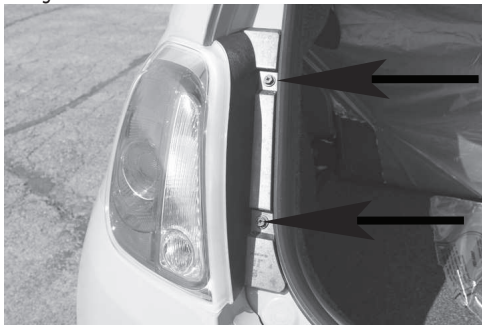


Figure 1

3. Locate vehicle's factory wiring harness connectors shown in **Figure 2**. The connectors will be similar to those on RV harness. Separate connectors from both sides and set aside. Inspect connectors for dirt and debris and clean if necessary.

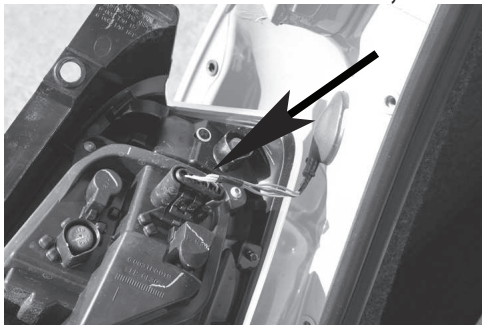


Figure 2

4. Starting on driver's side position RV harness connector ends containing Yellow wires between separated vehicle harness connectors shown in **Figure 3**. Press connectors firmly into vehicle connectors until they lock into place. Pull on connectors to ensure locks are engaged.
5. Locate a clean and accessible mounting location on the vehicle near the RV harness ends within reach of white wire and ring terminal. Remove any debris or undercoating to expose a clean metal surface and drill a 3/32" hole.

Caution: Take care not to drill through the body or any exposed surface.

Attach ring terminal on White wire using ground screw provided.

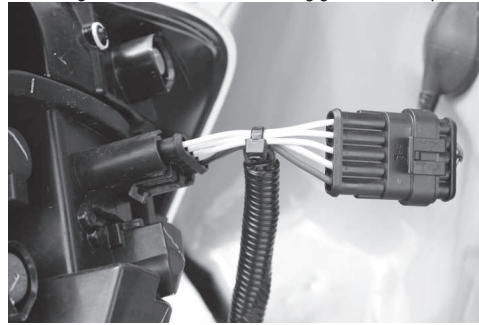


Figure 3

6. Route portion of RV Harness with connectors containing **Green** wires down taillight opening. Route behind bumper to passenger side securing to factory wire harness with cable ties provided shown in **Figure 4**. On passenger side route a fish tape through taillight opening. Secure RV harness ends to fish tape and pull through taillight opening and repeat Step 4 for connector plugging.

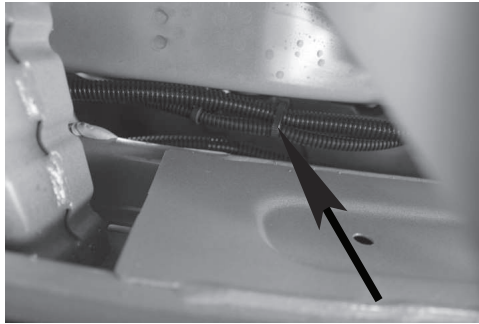


Figure 4

7. Cut the cable ties on 4-Flat portion of harness. Route the 4-Flat portion of the RV harness down taillight opening. Remove push clip on front side of driver's rear wheel well shown in **Figure 5**. Starting on left side of wheel well route fish tape up and over wheel well to right side. Secure 4-Flat to fish tape and pull through wheel well.



Figure 5

8. Route fish tape along splash guard shown in **Figure 6**. Secure 4-flat to fish tape and pull through plastic splash guard.



Figure 6

9. Continue routing 4-Flat to front of vehicle underneath the vehicle until you reach driver's side front wheel well. Secure 4-Flat to vehicle with cable tie pads provided.

Caution: Make sure to avoid areas that contain moving parts or could cut, pinch or burn the wires when routing the 4-flat harness towards the front of the vehicle.

Also avoid routing harness near the fuel lines as it may cause the fuel to ignite. Failure to follow these warnings may cause property damage, personal injury or loss of life.

10. At front driver's side wheel well remove 2 bolts using a 8mm socket shown in **Figure 7**. Remove access cover from driver's side wheel well shown in **Figure 8**. Route fish tape up and over wheel well and secure 4-Flat and pull through wheel well area.

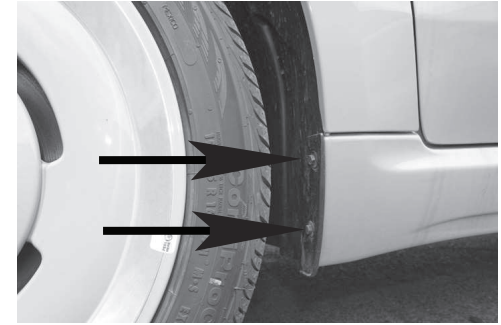


Figure 7

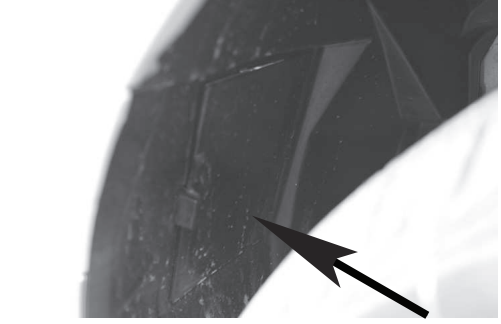


Figure 8

11. From inside engine compartment route fish tape through opening on side of battery down through access panel opening. Secure fish tape to 4-Flat and pull up into engine compartment.

12. Locate a suitable position to mount the 4-Flat bracket shown in **Figure 9**. Using the bracket as a template mark the two holes and drill two 3/32" holes and attach the bracket using the two remaining screws.

Caution: Take care not to drill through the body or any exposed surface.



Figure 9

13. With the 4-flat extension plugged into the RV harness on one end and the motorhome on the other, test that the functions work on the Fiat 500. These functions will only work on the brake/tail combination lamp.

4-Flat Harness Color Code:
 White - Ground
 Brown - Tail Lights
 Green - Right Turn and Brake Signal
 Yellow - Left Turn and Brake Signal

When not in use store the 4-flat extension in the vehicles glove box.

14. At the rear of the vehicle secure any loose wires using cable ties provided. Re-install taillights and any other items removed during installation.