

INSTALLATION MANUAL

Level of Difficulty

Easy

Installation difficulty levels are based on time and effort involved and may vary depending on the installer level of expertise, condition of the vehicle and proper tools and equipment.

Electrical Ratings

Signal circuits	5.0-amps per side
Tail / Running Circuits	7.5-amps total

Check vehicle owner's manual or contact the vehicle manufacturer for more information.

Wiring Location(s)

P3 and P4

Wiring Location Guide* for Passenger Cars (P)

P1	Behind driver side taillight housing, outside of trunk
P2	Behind passenger side taillight housing, outside of trunk
P3	Behind driver side taillight housing, inside of trunk
P4	Behind passenger side taillight housing, inside of trunk
P5	Behind driver side rear bumper
P6	Behind center of rear bumper
P7	Behind passenger side rear bumper



* Representative vehicle shown

Tools Required

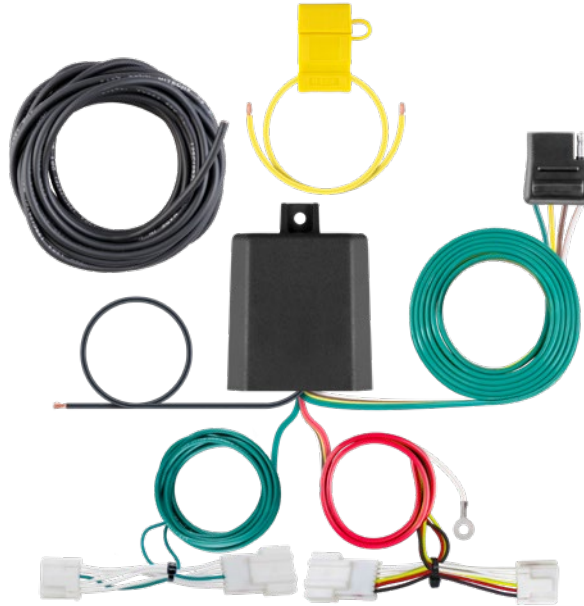
Flathead screwdriver	Cutting tool
Panel trim removal tool	Wire crimper
Electrical tape	Wire stripper

⚠ WARNING

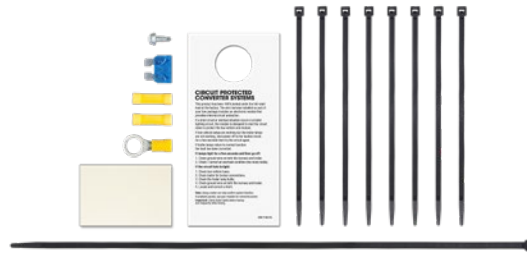
Do not exceed product rating or tow vehicle lamp load rating, whichever is lower.

The battery connection must be fuse-protected, 15-amp max. Exceeding the product rating can cause loss of warranty, overheating and potential fire.

Product Photo



Hardware Photo



NOTICE

Before you begin installation, read all instructions thoroughly.

Proper tools will improve the quality of installation and reduce the time required.

All steps must be followed to ensure the product will function properly. Once installed, test for proper function by using a test light or connecting a properly wired trailer.

Maintenance

Periodic inspection of all wires and connections should be performed to ensure there is no visible damage or loose connections.

Step 1

Locate the vehicle battery in the engine compartment on the driver side of the vehicle and disconnect the negative battery terminal. Be sure to fasten this wire down and away from the battery while completing the installation process.



Step 2

Open the trunk and remove the floor covering exposing the spare tire. Using a large flathead screwdriver, remove the two fasteners in the threshold, one on each side.

Using a panel trim removal tool, loosen the push fasteners in the trunk threshold. Lift and slide off the threaded bolt.



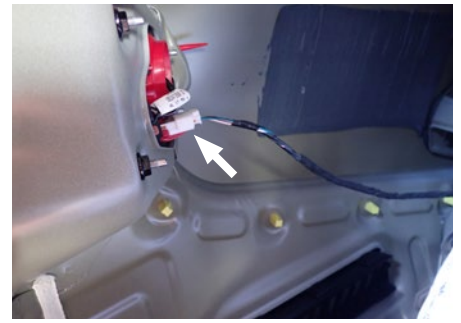
Step 3

Using a panel trim removal tool, loosen the push fasteners in the side wall, two per side, and pull back the felt liner exposing the taillight electrical harness. Repeat this process on the other side of the vehicle.



Step 4

Starting on the driver side of the vehicle, pull back the sidewall panels. Locate the taillight housing and separate the connectors, taking care not to damage the locking tabs. Install the custom wiring harness end with the yellow wire inbetween the separated connectors. Make sure the connectors are fully inserted with locking tabs in place.



Step 5

Locate a flat spot on the driver side of the vehicle behind the felt trunk liner. Adhere the black converter box using the provided double-sided tape.

Step 6

Locate a grounding point such as an existing screw or bolt in the frame of the vehicle or drill a 3/32" pilot hole. The area should be free from rust, dirt, and paint (abrasive pad/paper to remove rust and paint). Secure the white ground wire with the ring terminal on the existing fastener or with the provided ground screw.

CAUTION

Check for miscellaneous items that may be hidden behind or under any surface before drilling to avoid damage and/or personal injury



Step 7

Route the green wire along the back of the trunk below the threshold to the passenger side of the vehicle. Zip tie in place as needed. Locate the taillight housing and separate the connectors, taking care not to damage the locking tabs. Install the housing with the green wire inbetween the separated connectors. Make sure the connectors are fully inserted with locking tabs in place.

Step 8

Route the black power wire and ground wire from the vehicle battery as shown on the last page of this manual.

NOTICE

Once 12 volt power wire is connected to the harness verify that the harness is functioning by attaching the battery and testing with a test light, 4-flat tester or a functioning trailer.

Reinstall all items removed during install. If it was disconnected at the beginning of the installation, reconnect the negative battery terminal. Install the provided 4-flat dust cover to help prevent corrosion.

When in use, route the 4-flat with the center of the vehicle, and out of the hatch to the trailer be sure to stay clear of the hatches latching mechanism. When not in use roll up and store in a convenient, out of the way location. Secure any loose wires with provided cable ties.

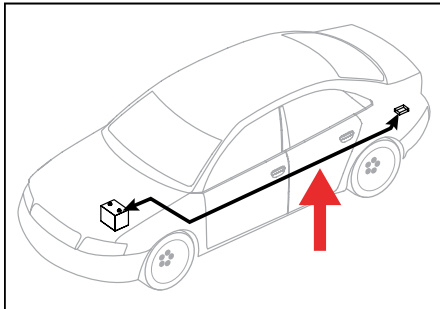
POWERED CONVERTER LEAD INSTRUCTION SHEET

NOTICE

Illustrations are for reference only. Battery location may differ depending on the vehicle.

WARNING

To avoid personal injury or property damage, check for miscellaneous items that may be behind or under any surface before drilling.



NOTICE

1. This converter system is to be used only on 12 volt negative ground systems.
2. Secure power wire to vehicle chassis using cable ties provided.
3. When passing the power wire through sheet metal, use an existing grommet, add a grommet or use silicone to protect the power wire from sharp edges.
4. Overall T-connector design may differ from illustration. The illustration should be used for power lead instruction only. Illustration is not to scale.

WARNING

Route 12 GA wire to vehicle battery location, taking care to avoid any pinch points and hot or rotating components.

Vehicle battery

