

INSTALLATION MANUAL



Level of Difficulty

Easy

Installation difficulty levels are based on time and effort involved and may vary depending on the installer level of expertise, condition of the vehicle and proper tools and equipment.

Electrical Ratings

Signal circuits	3.0-amps per side
Tail / Running Circuits	6.0-amps total

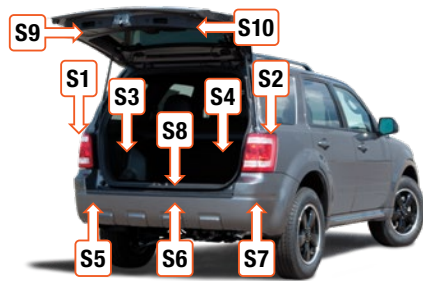
Check vehicle owner's manual or contact the vehicle manufacturer for more information.

Wiring Location(s)

S1 and S2

Wiring Location Guide* for SUVs and Vans (S)

S1	Behind driver side taillight housing
S2	Behind passenger side taillight housing
S3	Behind driver side rear access panel
S4	Behind passenger side rear access panel
S5	Behind driver side rear bumper
S6	Behind center of rear bumper
S7	Behind passenger side rear bumper
S8	Under rear floor panel
S9	Behind driver side rear access panel
S10	Behind passenger side rear access panel



* Representative vehicle shown

Tools Required

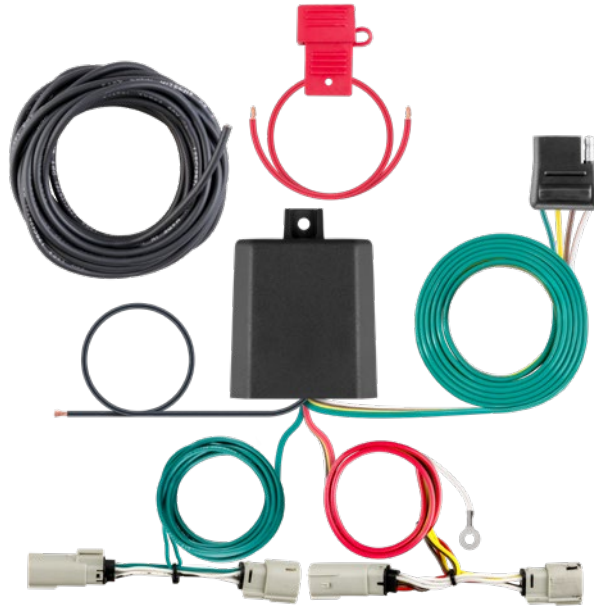
Ratchet	Panel trim removal tool
Socket, 10mm	Small flathead screwdriver
Socket extension	Phillips screwdriver

⚠ WARNING

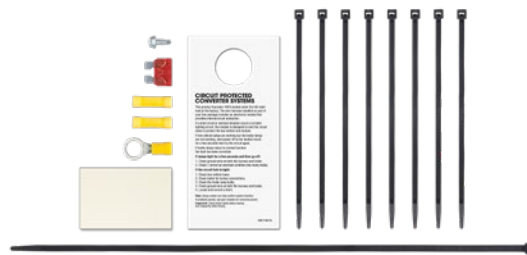
Do not exceed product rating or tow vehicle lamp load rating, whichever is lower.

The battery connection must be fuse-protected, 10-amp max. Exceeding the product rating can cause loss of warranty, overheating and potential fire.

Product Photo



Hardware Photo



NOTICE

Before you begin installation, read all instructions thoroughly.

Proper tools will improve the quality of installation and reduce the time required.

All steps must be followed to ensure the product will function properly. Once installed, test for proper function by using a test light or connecting a properly wired trailer.

Maintenance

Periodic inspection of all wires and connections should be performed to ensure there is no visible damage or loose connections.

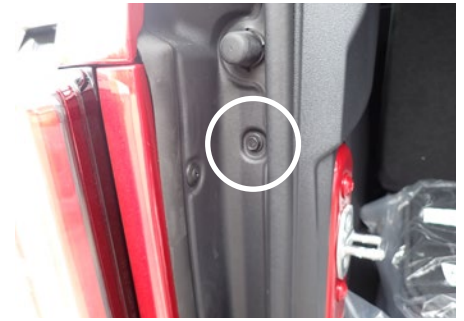
Step 1

Locate the vehicle battery and disconnect the negative battery terminal. Be sure to fasten this wire down and away from the battery while completing the installation process.



Step 2

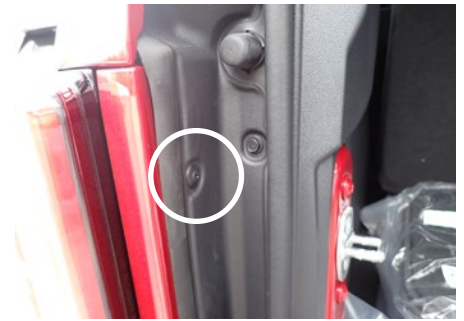
Open the tailgate all the way and raise the glass window in the open position. Use a 10mm socket to remove the four bolts, two on each side, securing the taillight trim in place.



Step 3

Use a Phillips screwdriver to remove eight screw push fasteners, four on each side securing the taillight trim in place.

Note: You may need a small flathead screwdriver to help back out the push fastener screw. Adding a little pressure to the backside of the screw will help the screw back out.



Step 4

Remove the taillight trim straight out, starting at the bottom and working your way up.

Repeat on the other side of the vehicle.



Step 5

Locate the vehicle taillight wiring connectors. The connectors will be similar to those on your new custom wiring product. Separate the connectors from the taillight housing taking care not to damage the locking tabs.

Repeat on the other side of the vehicle.



Step 6

Starting on the driver side, locate the custom wiring end with the yellow wire. Route the yellow wire behind the taillight wiring and wrap the wire around the rear bumper so that the connectors are above the bumper and the black converter box is below the bumper.

Insert the custom wiring end with yellow wire between the separated connectors. Make sure the connectors are fully inserted with locking tabs in place.

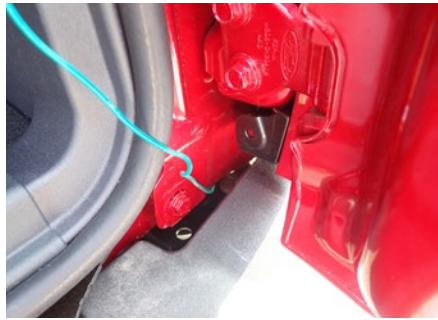
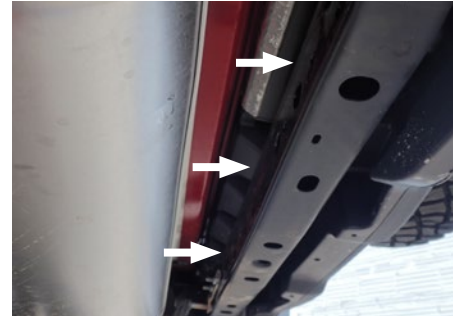
Route the wires up and behind the rear door seals that were removed in steps 4 and 5.



Step 7

Route the green wire over the driver-side frame rail and along the bumper. Next, route the green wire over the passenger-side frame rail. Zip tie as needed.

Repeat step 6 using the wire with the green wire to attach to the passengers side tail light.



Step 8

Adhere the black converter box using the provided double-sided tape and cable ties (on the top side of the frame). Secure any loose wires with the provided cable ties.



Step 9

Locate a grounding point such as an existing screw or bolt in the frame of the vehicle or drill a 3/32" pilot hole. The area should be free from rust, dirt, and paint (abrasive pad/paper to remove rust and paint). Secure the white ground wire with the ring terminal on the existing fastener or with the provided ground screw.

CAUTION

Check for miscellaneous items that may be hidden behind or under any surface before drilling to avoid damage and/or personal injury



Step 10

Route the 4-flat along the rear bumper and zip tie as needed. Mount the 4-flat close to the receiver tube.

NOTICE

Once the custom wiring harness is installed, verify that the harness is functioning by attaching the 4-flat to any vehicle with functioning trailer lights. The taillights on the tow vehicle should function along with the taillights on the towing vehicle.



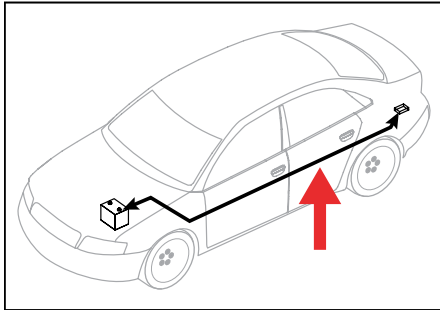
Step 11

Reinstall all items removed during install. If it was disconnected at the beginning of the installation, reconnect the negative battery terminal. Install the provided 4-flat dust cover to help prevent corrosion.

POWERED CONVERTER LEAD INSTRUCTION SHEET

NOTICE

Illustrations are for reference only. Battery location may differ depending on the vehicle.



WARNING

To avoid personal injury or property damage, check for miscellaneous items that may be behind or under any surface before drilling.

NOTICE

1. This converter system is to be used only on 12 volt negative ground systems.
2. Secure power wire to vehicle chassis using cable ties provided.
3. When passing the power wire through sheet metal, use an existing grommet, add a grommet or use silicone to protect the power wire from sharp edges.
4. Overall T-connector design may differ from illustration. The illustration should be used for power lead instruction only. Illustration is not to scale.

WARNING

Route 12 GA wire to vehicle battery location, taking care to avoid any pinch points and hot or rotating components.

