

INSTALLATION MANUAL



Level of Difficulty

Easy

Installation difficulty levels are based on time and effort involved and may vary depending on the installer level of expertise, condition of the vehicle and proper tools and equipment.

Electrical Ratings

Signal circuits	5.0-amps per side
Tail / Running Circuits	7.5-amps total

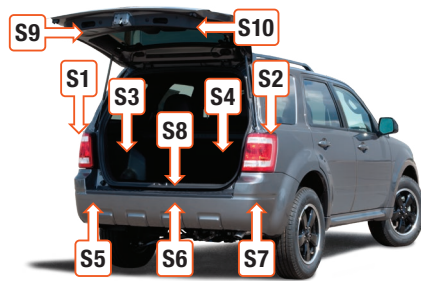
Check vehicle owner's manual or contact the vehicle manufacturer for more information.

Wiring Location(s)

S3 and S4

Wiring Location Guide* for SUVs and Vans (S)

S1	Behind driver side taillight housing
S2	Behind passenger side taillight housing
S3	Behind driver side rear access panel
S4	Behind passenger side rear access panel
S5	Behind driver side rear bumper
S6	Behind center of rear bumper
S7	Behind passenger side rear bumper
S8	Under rear floor panel
S9	Behind driver side rear access panel
S10	Behind passenger side rear access panel



* Representative vehicle shown

Tools Required

Ratchet	Cutting tool
Socket, 7mm	Wire crimper
Socket extension	Wire stripper
Flathead screwdriver	Panel trim removal tool
Electrical tape	

⚠ WARNING

Do not exceed product rating or tow vehicle lamp load rating, whichever is lower.

The battery connection must be fuse-protected, 15-amp max. Exceeding the product rating can cause loss of warranty, overheating and potential fire.

NOTICE

Before you begin installation, read all instructions thoroughly.

Proper tools will improve the quality of installation and reduce the time required.

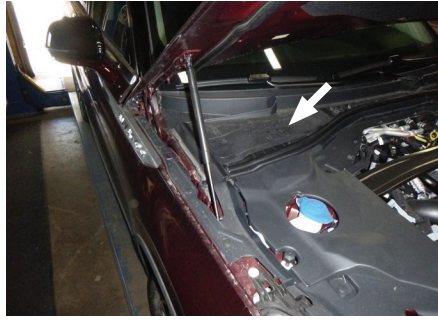
All steps must be followed to ensure the product will function properly. Once installed, test for proper function by using a test light or connecting a properly wired trailer.

Maintenance

Periodic inspection of all wires and connections should be performed to ensure there is no visible damage or loose connections.

Step 1

Locate the vehicle's battery in the engine compartment on the driver side and disconnect the negative battery terminal. Be sure to fasten this wire down and away from the battery while completing the installation process.



Step 2

Open the trunk. Place third row seats in the down position. Remove the floor coverings to expose the spare tire.



Step 3

Using a panel trim removal tool, release the push fasteners securing the skid plate in place. Separate the hatch sensor connector taking care not to damage the locking tabs. Set the skid plate aside.

Use the panel trim removal tool to remove the side panel pockets.



Step 4

Using a small flathead screwdriver, remove the trim covers from the cargo tie-down points.

Use a 7mm socket to remove the cargo tie-downs.



Step 5

Starting on the driver side, use a panel trim removal tool to loosen the sidewall panels. Locate the taillight housing and separate the connectors taking care not to damage the locking tabs. Install the housing with the yellow wire in between the main harness and the taillight. Make sure the connectors are fully inserted with locking tabs in place.



Step 6

Locate a flat spot inside the vehicle, near the taillight where the yellow wire is routed. Adhere the black converter box using the provided double-sided tape.



Step 7

Locate a suitable grounding point near the connector such as an existing screw with nut in the vehicle frame or drill a 3/32" pilot hole for the provided screw. The area should be free of rust, dirt and paint. Secure the white ground wire using the ring terminal and provided screw.

⚠ WARNING

Check for miscellaneous items that may be hidden behind or under any surface before drilling to avoid damage and / or personal injury.

Step 8

Repeat steps 4 through 5 on the passenger side. Route the green wire along the back of the vehicle to the passenger side. Install the harness in between the main harness and the taillight.

Step 9

Route the black power wire from the vehicle battery as shown on the provided 'Powered Converter Lead Instruction Sheet'.

NOTICE

Once 12 volt power wire is connected to the harness verify that the harness is functioning by attaching the battery and testing with a test light, 4-flat tester or a functioning trailer.

Step 10

When in use, route the 4-flat to the center of the vehicle. When not in use, roll up and store in a convenient, out of the way location. Secure any loose wires with the provided cable ties.

Reinstall all items removed during install. If it was disconnected at the beginning of the installation, reconnect the negative battery terminal. Install the provided 4-flat dust cover to help prevent corrosion.

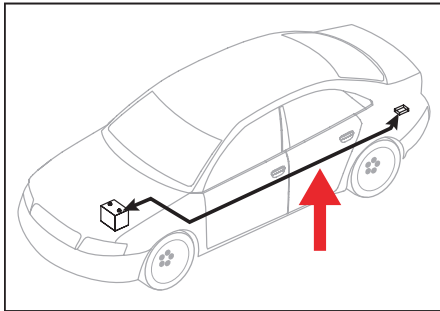
POWERED CONVERTER LEAD INSTRUCTION SHEET

NOTICE

Illustrations are for reference only. Battery location may differ depending on the vehicle.

WARNING

To avoid personal injury or property damage, check for miscellaneous items that may be behind or under any surface before drilling.



NOTICE

1. This converter system is to be used only on 12 volt negative ground systems.
2. Secure power wire to vehicle chassis using cable ties provided.
3. When passing the power wire through sheet metal, use an existing grommet, add a grommet or use silicone to protect the power wire from sharp edges.
4. Overall T-connector design may differ from illustration. The illustration should be used for power lead instruction only. Illustration is not to scale.

WARNING

Route 12 GA wire to vehicle battery location, taking care to avoid any pinch points and hot or rotating components.

Vehicle battery

