

INSTALLATION MANUAL



Level of Difficulty

Moderate

Electrical Ratings

Signal circuits	5.0-amps per side
Tail / Running Circuits	7.5-amps total

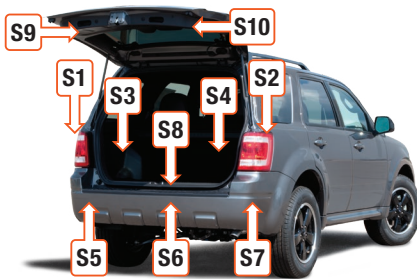
Check vehicle owner's manual or contact the vehicle manufacturer for more information.

Wiring Location(s)

S1 and S2

Wiring Location Guide* for SUVs and Vans (S)

S1	Behind driver side taillight housing
S2	Behind passenger side taillight housing
S3	Behind driver side rear access panel
S4	Behind passenger side rear access panel
S5	Behind driver side rear bumper
S6	Behind center of rear bumper
S7	Behind passenger side rear bumper
S8	Under rear floor panel
S9	Behind driver side rear access panel
S10	Behind passenger side rear access panel



* Representative vehicle shown

Tools Required

Ratchet	Cutting tool
Socket extension	Wire crimper
Torx bit, T-25	Wire stripper
Small flathead screwdriver	Panel trim removal tool
Flathead screwdriver	--

⚠ WARNING

Do not exceed product rating or tow vehicle lamp load rating, whichever is lower.

The battery connection must be fuse-protected, 15-amp max. Exceeding the product rating can cause loss of warranty, overheating and potential fire.

NOTICE

Before you begin installation, read all instructions thoroughly.

Proper tools will improve the quality of installation and reduce the time required.

All steps must be followed to ensure the product will function properly. Once installed, test for proper function by using a test light or connecting a properly wired trailer.

Maintenance

Periodic inspection of all wires and connections should be performed to ensure there is no visible damage or loose connections.

Step 1

Locate the vehicle battery on the driver side in the engine compartment and disconnect the negative terminal. Fasten this wire down and away from the battery during the installation.



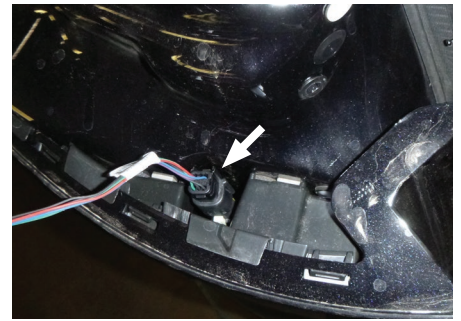
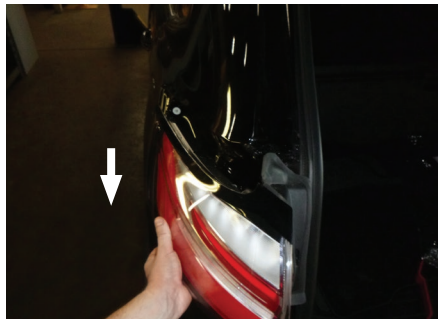
Step 2

Open the tailgate with a small flathead screwdriver. Remove the plastic cover in the taillight using a large flathead screwdriver or a T-25 Torx bit. Remove the fastener behind this cover.



Step 3

Using a pry tool, being careful not to dent or scratch the vehicle, loosen the taillight and pull rearward to remove. Behind the taillight, locate the vehicle taillight wiring harness connectors. Disconnect the housing by releasing the locking tabs. Set the taillight to the side.



Step 4

Using a pry tool, starting from the side of the vehicle working towards the back hatch, gently release the bumper cover from the vehicle bumper. Run a fish wire down from the taillight pocket between the bumper cover and the vehicle body. See step 5 for correct use of fish wire.

Repeat steps 2 through 4 on the other side.



Step 5 - How to use fish wire

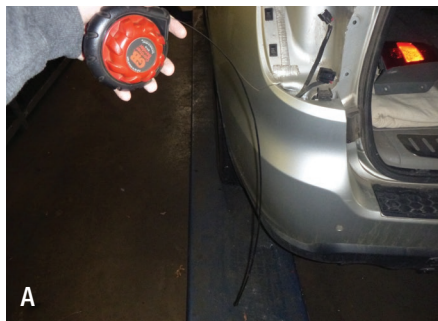
A) Fish wire is a way to push or pull an electrical wire through a blind hole. Make sure the wire is long enough to stick out on the other side.

Insert the fish wire through the blind hole and locate it on the other side.

B) Use tape to secure the harness to the fish wire and pull back up.

The fish wire or harness may get hung up on something, if this happens you may have to push back down, wiggle it around or twist the wire to loosen it from what it's hung up on.

Fish wire could be anything from a cut-up wire hanger, stiff wire, rope or string depending on what is needed for the installation.



Step 6

On the driver side under the vehicle, find the fish wire and secure the T-connector end with the yellow wire and pull the T-connector end up to the taillight pocket. Install the connector onto the factory wiring to keep it from falling down. Make sure the connectors are fully inserted with locking tabs in place.



Step 7

Locate a flat clean surface that is out of the path of spray and debris from the rear wheels and road. Adhere the black converter box using the provided double-sided tape. Failure to mount the box in a protected area can cause loss of warranty, product failure, overheating and potential fire.

Locate a suitable grounding point near the connector such as an existing screw with nut in the vehicle frame or drill a 3/32" pilot hole for the provided screw. The area should be free of rust, dirt and paint. Secure the white ground wire using the ring terminal and provided screw.



CAUTION

Check for miscellaneous items that may be hidden behind or under any surface before drilling to avoid damage and/or personal injury

Step 8

Route the green wire to the passenger side, up and out of the way. Repeat step 5 to route the green wire to the passenger-side taillight pocket. Route the trailer 4-flat to the center of the vehicle and mount near the hitch. Secure any loose wires with the provided zip ties.

Route the black power wire from the vehicle battery as shown on the last page of this manual.

NOTICE

Once 12 volt power wire is connected to the harness verify that the harness is functioning by attaching the battery and testing with a test light, 4-flat tester, or a functioning trailer.

Reinstall all items removed during harness install, and reconnect the negative battery terminal. Install the provided 4 flat dust cover to help prevent corrosion.



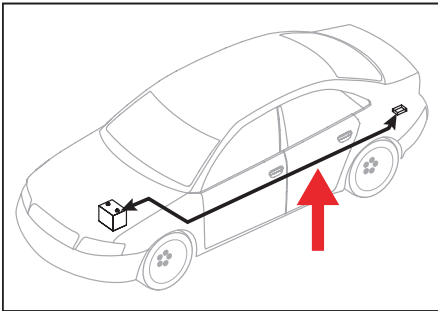
POWERED CONVERTER LEAD INSTRUCTION SHEET

NOTICE

Illustrations are for reference only. Battery location may differ depending on the vehicle.

WARNING

To avoid personal injury or property damage, check for miscellaneous items that may be behind or under any surface before drilling.



NOTICE

1. This converter system is to be used only on 12 volt negative ground systems.
2. Secure power wire to vehicle chassis using cable ties provided.
3. When passing the power wire through sheet metal, use an existing grommet, add a grommet or use silicone to protect the power wire from sharp edges.
4. Overall T-connector design may differ from illustration. The illustration should be used for power lead instruction only. Illustration is not to scale.

WARNING

Route 12 GA wire to vehicle battery location, taking care to avoid any pinch points and hot or rotating components.

