

INSTALLATION MANUAL



Level of Difficulty

Easy

Electrical Ratings

Signal circuits	5.5-amps per side
Tail / Running Circuits	7.5-amps total

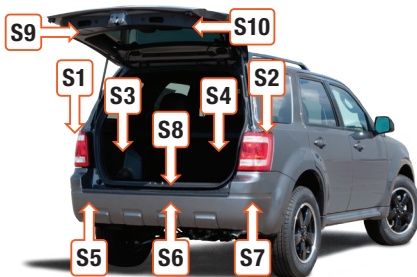
Check vehicle owner's manual or contact the vehicle manufacturer for more information.

Wiring Location(s)

S3 and S4

Wiring Location Guide* for SUVs and Vans (S)

S1	Behind driver side taillight housing
S2	Behind passenger side taillight housing
S3	Behind driver side rear access panel
S4	Behind passenger side rear access panel
S5	Behind driver side rear bumper
S6	Behind center of rear bumper
S7	Behind passenger side rear bumper
S8	Under rear floor panel
S9	Behind driver side rear access panel
S10	Behind passenger side rear access panel



* Representative vehicle shown

Tools Required

Ratchet	Panel trim removal tool
Socket, 1/4., 10mm	Cutting tool
Socket extension	Wire crimper
Torx bit, T-15, T-20, T25	Wire stripper
Phillips screwdriver	Allen wrench, 3mm

⚠ WARNING

Do not exceed product rating or tow vehicle lamp load rating, whichever is lower.

The battery connection must be fuse-protected, 15-amp max. Exceeding the product rating can cause loss of warranty, overheating and potential fire.

NOTICE

Before you begin installation, read all instructions thoroughly.

Proper tools will improve the quality of installation and reduce the time required.

All steps must be followed to ensure the product will function properly. Once installed, test for proper function by using a test light or connecting a properly wired trailer.

Maintenance

Periodic inspection of all wires and connections should be performed to ensure there is no visible damage or loose connections.

Step 1

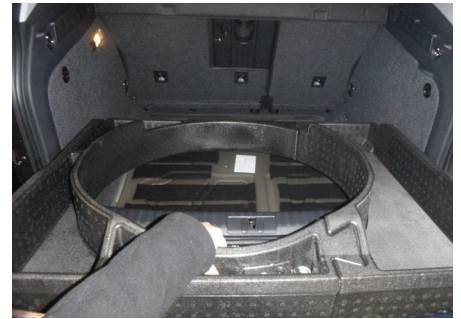
Locate the vehicle battery. Look up the battery location in the owner's manual of your vehicle. Disconnect the negative battery terminal. Be sure to fasten this wire down and away from the battery when completing the installation process.



Step 2

Open the vehicle hatch. Remove all trunk floor coverings, exposing the spare tire.

Remove the spare tire by loosening the spare tire hold down. Remove the foam cubbies by pulling straight up and sliding out.



Step 3

Using the 3mm Allen wrench, remove the fasteners securing the rear scuff panel. Remove the scuff panel by pulling out on the bottom and then up. Take care not to damage the alignment tabs on the back.



Step 4

Using the T-15 Torx head, remove the two screws that are securing the side panel to the body of the vehicle (just below the scuff plate).

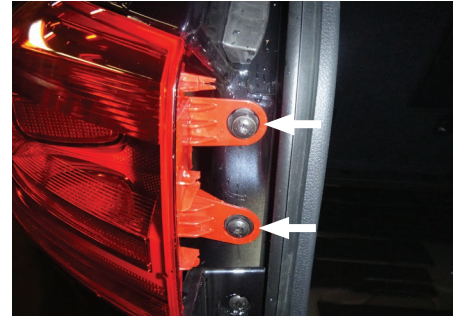
Using the T-20 Torx head, remove the screw securing the cargo tie downs on both sides. Remove both interior side panels (the locks on the panel turn 90 degrees) and set all these items aside.



Step 5

Remove the taillight trim cover using a panel trim removal tool to expose the two fasteners securing the taillight in place. Take care not to damage any clips.

Use the T-25 Torx bit, remove the taillight fasteners and set aside.



Step 6

Remove the taillight and disconnect by pulling back on the red locking tab and pressing down on the top side tab. Take care not to damage the locking tabs.

Repeat steps 4 through 6 on the other side.



Step 7

On the passenger side inside of the removed side panel, route the green wire to the passenger-side taillight.

Insert the harness into the factory wiring and connect the taillight. Make sure the connectors are fully inserted with locking tabs in place.



Step 8

Locate a flat clean surface that is out of the path of spray and debris from the rear wheels and road. Adhere the black converter box using the provided double-sided tape. Failure to mount the box in a protected area can cause loss of warranty, product failure, overheating and potential fire.

Locate a grounding point near the box such as an existing screw or bolt in the frame of the vehicle or drill a 3/32. pilot hole. The area should be free from rust, dirt, and paint (abrasive pad/paper to remove rust and paint). Secure the white ground wire with the ring terminal on the existing fastener or with the provided ground screw.

CAUTION

Check for miscellaneous items that may be hidden behind or under any surface before drilling to avoid damage and/or personal injury

Step 9

Route the yellow wire along the body just below the skid plate to the driver side.

Repeat steps 7 on the driver side using the wiring end with the yellow wire. Secure any loose wires with the provided cable ties.

Step 10

Route the black power wire from the vehicle battery as shown on the last page of this manual. You may need to run the power wire from the bottom of the trunk pan through the rubber grommet. Use a drill bit the same size as the wire and feed through the opening.

NOTICE

Once the 12 volt power wire is connected to the harness verify that the harness is functioning by attaching the battery and testing with a test light, 4-flat tester, or a functioning trailer.



Step 11

When in use, route the 4-flat to the center of the vehicle and out of the trunk.
When not in use, roll up and store in a convenient, out of the way location inside the trunk. Secure any loose wires with the provided cable ties.

Reinstall all items removed during install. If it was disconnected at the beginning of the installation, reconnect the negative battery terminal. Install the provided 4-flat dust cover to help prevent corrosion.

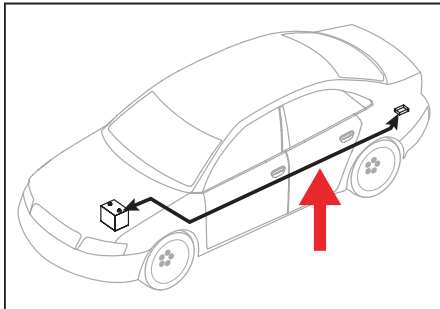
POWERED CONVERTER LEAD INSTRUCTION SHEET

NOTICE

Illustrations are for reference only. Battery location may differ depending on the vehicle.

WARNING

To avoid personal injury or property damage, check for miscellaneous items that may be behind or under any surface before drilling.



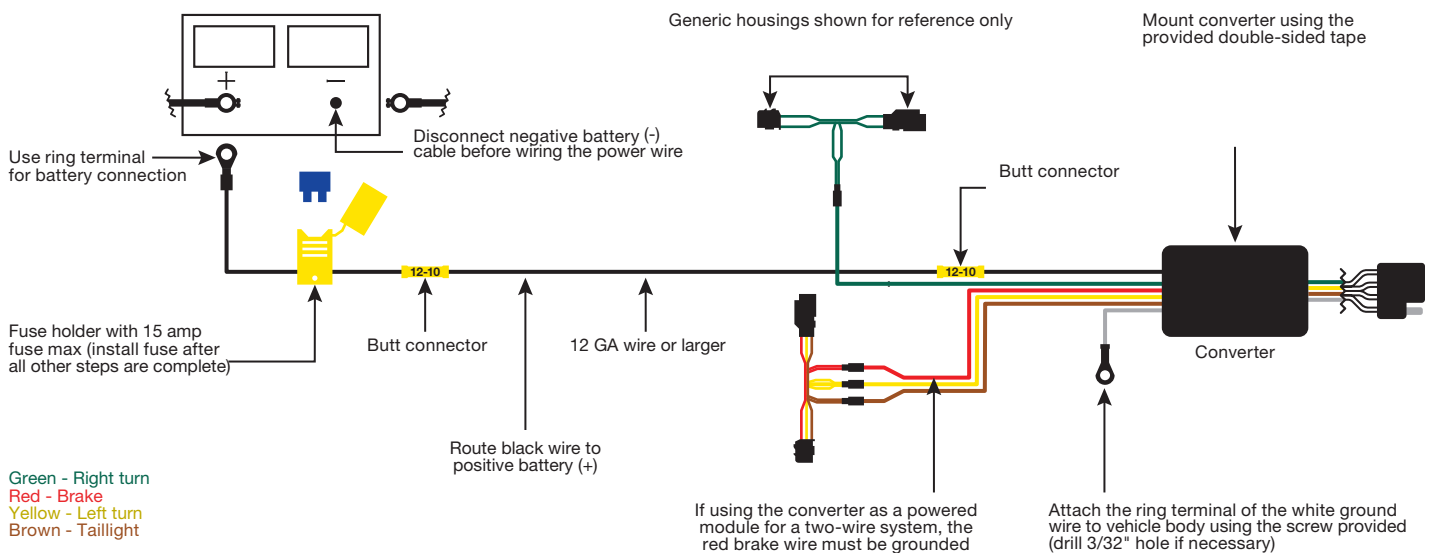
NOTICE

1. This converter system is to be used only on 12 volt negative ground systems.
2. Secure power wire to vehicle chassis using cable ties provided.
3. When passing the power wire through sheet metal, use an existing grommet, add a grommet or use silicone to protect the power wire from sharp edges.
4. Overall T-connector design may differ from illustration. The illustration should be used for power lead instruction only. Illustration is not to scale.

WARNING

Route 12 GA wire to vehicle battery location, taking care to avoid any pinch points and hot or rotating components.

Vehicle battery



Vert - Clignotant droit
Rouge - Frein
Jaune - Clignotant gauche
Brun - Feu arrière

Verde - Giro a la derecha
Rojo - Freno
Amarillo - Giro a la izquierda
Marrón - Luces traseras