

INSTALLATION MANUAL



Level of Difficulty

Easy

Electrical Ratings

Signal circuits	3.0-amps per side
Tail / Running Circuits	6.0-amps total

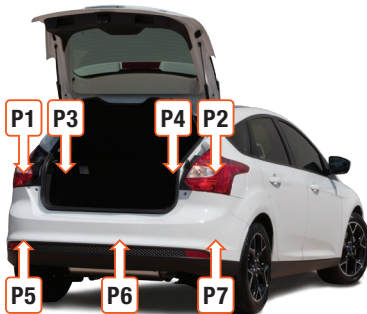
Check vehicle owner's manual or contact the vehicle manufacturer for more information.

Wiring Location(s)

P3 and P4

Wiring Location Guide* for Passenger Cars (P)

P1	Behind driver side taillight housing, outside of trunk
P2	Behind passenger side taillight housing, outside of trunk
P3	Behind driver side taillight housing, inside of trunk
P4	Behind passenger side taillight housing, inside of trunk
P5	Behind driver side rear bumper
P6	Behind center of rear bumper
P7	Behind passenger side rear bumper



* Representative vehicle shown

Tools Required

Ratchet	Cutting tool
Socket, 10 mm	Electrical tape
Wire crimper	Panel trim removal tool
Wire stripper	

⚠ WARNING

Do not exceed product rating or tow vehicle lamp load rating, whichever is lower.

The battery connection must be fuse-protected, 10-amp max. Exceeding the product rating can cause loss of warranty, overheating and potential fire.

NOTICE

Before you begin installation, read all instructions thoroughly.

Proper tools will improve the quality of installation and reduce the time required.

All steps must be followed to ensure the product will function properly. Once installed, test for proper function by using a test light or connecting a properly wired trailer.

Maintenance

Periodic inspection of all wires and connections should be performed to ensure there is no visible damage or loose connections.

Step 1

Locate the vehicle battery. Look up the battery location in the owner's manual of your vehicle. Disconnect the negative battery terminal. Be sure to fasten this wire down and away from the battery when completing the installation process.



Step 2

Open the vehicle trunk. Remove all trunk floor coverings to expose the spare tire.



Step 3

Use the panel trim removal tool to remove the four push fasteners (shown with red arrows) and the two cargo hook fasteners (shown with green arrows). To remove the cargo hooks, press in on the center of the cargo hook and pull out.



Step 4

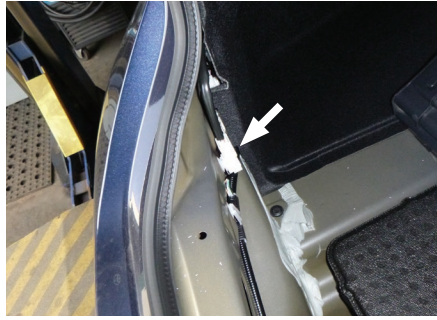
Use the panel trim removal tool to remove the fasteners securing the rear scuff panel. Remove the scuff panel by pulling straight up. Take care not to damage the alignment tabs on the back.



Step 5

Starting on the driver side, locate the vehicle taillight wiring connectors. The connectors will be similar to those on your new custom wiring product. Separate the connectors from the taillight housing taking care not to damage the locking tabs.

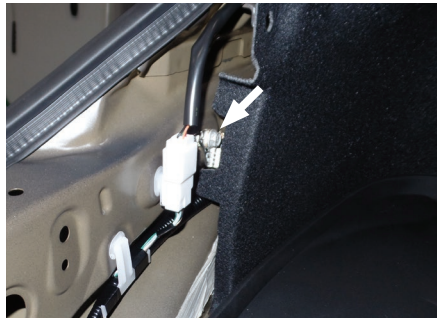
Insert the custom wiring end with yellow wire between the separated connectors. Make sure the connectors are fully inserted with locking tabs in place.



Step 6

Locate a flat clean surface behind the trunk liner. Adhere the black converter box using the provided double-sided tape. Failure to mount the box in a protected area can cause loss of warranty, product failure, overheating and potential fire.

Between the driver-side taillight housing and the side wall is a ground bolt for factory wiring. Use a 10mm socket to loosen the bolt. Add the ground wire from the converter box with the ring terminal to this bolt and re-install the ground bolt. Be sure that the factory grounds haven't fallen off the bolt.



Step 7

Route the custom wiring harness end with the green wire to the passenger side behind the removed scuff panel. Repeat Step 5 on the passenger side with the green wire.



Step 8

Route the black power wire from the vehicle battery as shown on the last page of this manual.

NOTICE

Once the 12 volt power wire is connected to the harness verify that the harness is functioning by attaching the battery and testing with a test light, 4-flat tester, or a functioning trailer.

When in use, route the 4-flat to the center of the vehicle and out of the trunk. When not in use, roll up and store in a convenient, out of the way location inside the trunk. Secure any loose wires with the provided cable ties.

Reinstall all items removed during install. If it was disconnected at the beginning of the installation, reconnect the negative battery terminal. Install the provided 4-flat dust cover to help prevent corrosion.

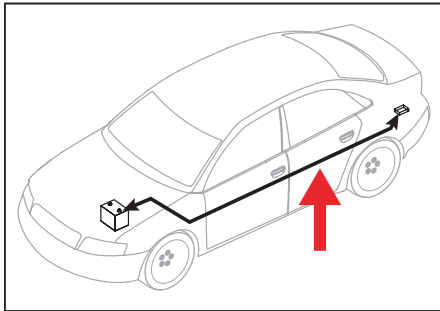
POWERED CONVERTER LEAD INSTRUCTION SHEET

NOTICE

Illustrations are for reference only. Battery location may differ depending on the vehicle.

WARNING

To avoid personal injury or property damage, check for miscellaneous items that may be behind or under any surface before drilling.



NOTICE AVIS / AVISO

1. This converter system is to be used only on 12 volt negative ground systems.
2. Secure power wire to vehicle chassis using cable ties provided.
3. When passing the power wire through sheet metal, use an existing grommet, add a grommet or use silicone to protect the power wire from sharp edges.
4. Overall T-connector design may differ from illustration. The illustration should be used for power lead instruction only. Illustration is not to scale.

WARNING

Route 12 GA wire to vehicle battery location, taking care to avoid any pinch points and hot or rotating components.

Vehicle battery

