

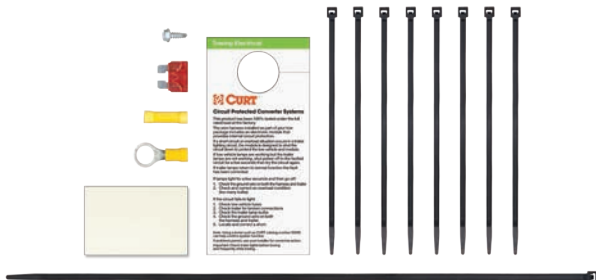
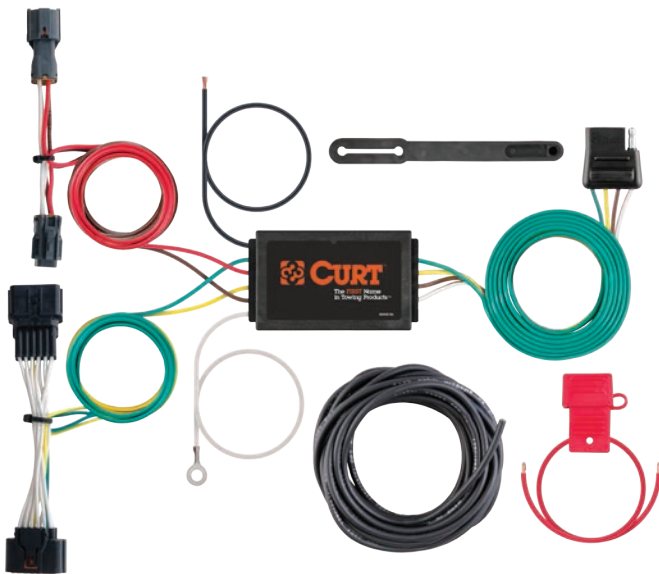
# INSTALLATION INSTRUCTIONS

**⚠ WARNING: DO NOT EXCEED PRODUCT RATING OR TOW VEHICLE LAMP LOAD RATING, WHICHEVER IS LOWER**

## 56321 APPLICATIONS

Make	Model
Kia	Sportage

## VEHICLE-TO-TRAILER WIRING HARNESS



## WIRING LOCATION GUIDE

### SUVS, MINI & FULL-SIZED VANS (S)

Representative vehicle shown below

**S1** - Behind driver side taillight housing

**S5** - Behind driver side rear bumper



## NOTICE

All steps must be followed to ensure the CURT wiring harness will function properly. Once installed, test for proper function by using a test light or connecting a properly wired trailer.

## TOOLS NEEDED

- 10mm socket
- Ratchet
- Panel trim removal tool
- Phillips screwdriver
- Flat blade screwdriver
- Wire stripper
- Crimping tool
- Cutting tool
- Grommet sealant

## ⚠ WARNING

The battery connection must be fuse protected, 10 amp max. Exceeding the product rating can cause loss of warranty, overheating and potential fire. Do not exceed product rating or tow vehicle lamp load rating, whichever is lower.

Signal Circuits - 7.5 amps per side  
Tail / Running Circuits - 7.5 amps total

# INSTALLATION / SAFETY INSTRUCTIONS

## Step 1

Locate vehicle battery on the driver side under the hood and disconnect the negative battery terminal.

## Step 2

Starting on the driver side, underneath the vehicle, behind the rear tire, locate the four plastic clips (A,B). Remove the clips and plastic cover.

## Step 3

Locate the vehicle 12-pin connectors (C). The connectors will be similar to those on the CURT wiring harness. Separate the connectors taking care not to damage the locking tabs (O).

## Step 4

Locate the grommet in the floor pan where the vehicle taillight wiring passes through from inside the cabin to the 12-pin connector (E). Remove the grommet from the floor pan.

## Step 5

Open the vehicle tailgate. Remove all trunk floor coverings (F).

## Step 6

Remove the fasteners securing the rear scuff panel (G,H). Remove the scuff panel by pulling out on the bottom and then up. Take care not to damage the alignment tabs on the back (I).

## Step 7

On the driver side, remove the fasteners and cargo tie down from the side trim panel (J,K,L). Pull back on the side trim panel to locate the removed grommet in the floor pan. Take care not to damage the alignment tabs on the back of the panel.

## Step 8

On the outside of the vehicle, remove the two fasteners securing the taillight in place (N). Remove the taillight by gently pulling rearward.

## Step 9

On the back of the taillight locate the vehicle taillight wiring harness connectors. The connectors will be similar to those on the CURT wiring harness. Separate the connectors from the taillight housing taking care not to damage the locking tabs (O).

## Step 10

Locate the grommet behind the taillight where the vehicle taillight wiring passes through from inside the cabin to the taillight (P). Remove the grommet and cut a slit large enough to route the CURT wiring harness end with the 4-pin connector and red wire through (Q,R).

## Step 11

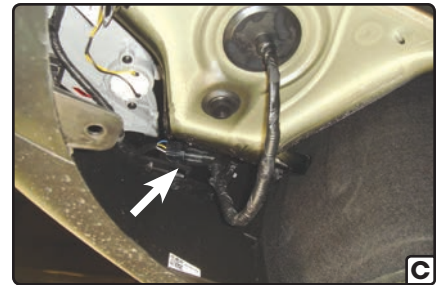
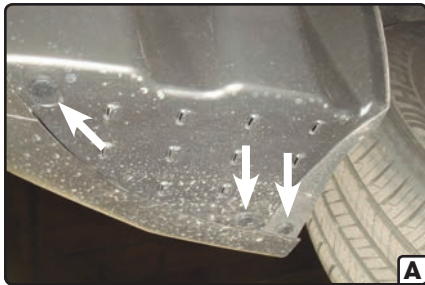
Route the CURT wiring harness end with the red wire out through the grommet opening and through the slit in the grommet. Insert the wiring harness end with red wire between the separated connectors. Make sure the connectors are fully inserted with locking tabs in place.

## Step 12

Reseat the grommet and use sealant (not provided) to seal the cut in the grommet and around all the wires.

## Step 13

Reinstall the taillight.



# INSTALLATION / SAFETY INSTRUCTIONS

## Step 14

On the inside of the hatch, behind the side trim panel, locate the removed floor pan grommet. Cut a slit large enough to route the CURT wiring harness end with the 12-pin connectors and yellow wire though (R).

## Step 15

Route the CURT wiring harness end with the yellow wire out through the grommet opening and through the slit in the grommet. Insert the wiring harness end with yellow wire between the separated connectors. Make sure the connectors are fully inserted with locking tabs in place.

## Step 16


Route the black power wire from the vehicle battery as shown on the included CME-PCL-INS sheet.

## Step 17

Reseat the grommet in the floor pan and use sealant (not provided) to seal the cut in the grommet and around all the wires.

## Step 18

Locate a suitable grounding point near the connector such as an existing screw with nut in the vehicle frame or drill a 3/32" pilot hole for the provided screw. The area should be free of rust, dirt and paint. Secure the white ground wire using the ring terminal and provided screw.

 **WARNING:** Check for miscellaneous items that may be hidden behind or under any surface before drilling to avoid damage and / or personal injury.

## Step 19

Locate a flat spot inside the vehicle, near the taillight. Adhere the black converter box using the provided double-sided tape.

## Step 20

When in use, route the 4-flat to the center of the vehicle. When not in use, roll up and store in a convenient, out of the way location. Secure any loose wires with the provided cable ties.

## Step 21

Reinstall all items removed during install and reconnect negative battery terminal. Install the provided 4-flat dust cover to help prevent corrosion.

