

INSTALLATION MANUAL



Level of Difficulty

Easy

Installation difficulty levels are based on time and effort involved and may vary depending on the installer level of expertise, condition of the vehicle and proper tools and equipment.

Wiring Location(s)

Driver-side door trim panel

Tools Required

| | |
|-------------------------|----|
| Panel trim removal tool | -- |
|-------------------------|----|

⚠ WARNING

Do not exceed product rating or tow vehicle lamp load rating, whichever is lower.

Product Photo



NOTICE

Before you begin installation, read all instructions thoroughly.

Proper tools will improve the quality of installation and reduce the time required.

All steps must be followed to ensure the product will function properly. Once installed, test for proper function by using a test light or connecting a properly wired trailer.

Maintenance

Periodic inspection of all wires and connections should be performed to ensure there is no visible damage or loose connections.

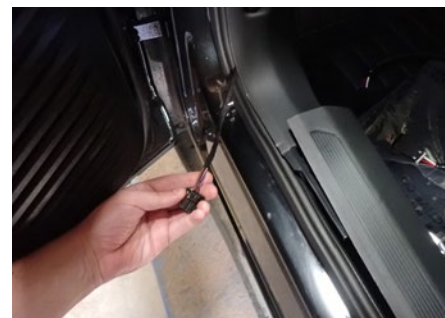
Step 1

Open the driver-side door. Use a panel trim removal tool to pry up and release the push fasteners on the door jam trim.



Step 2

Locate the quick plug and route to the inside of the kick panel.



Step 3

Attach the custom wiring harness to the quick plug and route up and behind the kick panel.

At the top of the kick panel route to a convenient location for easy access.

