

INSTALLATION MANUAL

40246

Level of Difficulty

Easy

Weight Capacity

Gross trailer weight (GTW)	3,500 lbs.
Tongue weight (TW)	350 lbs.

Parts List

Item	Qty	Description
1	1	Trailer ball assembly
2	1	Anti-rotation base plate
3	1	Lock washer, 3/4"
4	1	Hex nut, 3/4"

Ball mount sold separately

Tools Required

Torque wrench	Socket
---------------	--------

Torque Specifications

3/4" bolt	160 ft-lbs.
-----------	-------------

Use above torque setting unless otherwise noted

NOTICE

Before you begin installation, read all instructions thoroughly.

Proper tools will improve the quality of installation and reduce the time required.

Ensure the trailer ball shank diameter corresponds with the ball mount hole size.

Ensure the trailer ball size matches the trailer coupler. If they do not, the trailer could become uncoupled.

To help prevent damage to the product or vehicle, refer to the specified torque specifications when securing hardware during the installation process.

⚠ WARNING

Never exceed the vehicle manufacturer's recommended towing capacity. The ratings of the trailer ball are intended to represent the capability of the product and in no way reflect the ratings or capacity of the towing system it is being used with. The consumer or operator are strongly advised to know the ratings of the various components of the towing system and never exceed the limits of the lowest rated component being used.

Use of any pin other than what is provided by the manufacturer could be a serious safety hazard and will void the warranty.

Ensure that the safety chains operate freely around the trailer ball system and do not become entangled in the trailer ball system.

If the ball is ever able to move with minimal force by hand more than five degrees from the vertical position, the product must be replaced. Use of a heavily worn or damaged trailer ball assembly may result in the trailer becoming separated from the vehicle. Consult CURT Product Support if you have any questions.

Periodically check the hex nut and ensure it is tightened to the correct torque specifications.

Before every use, be sure the snap ring on the pivot pin of the trailer ball assembly is in place and properly seated.



Immediately discontinue product use if the snap ring is missing on the end of the trailer ball pivot pin or if the trailer ball pin has backed partially out of the trailer ball assembly.

Do not use the trailer ball on ball mounts that do not have a flat mounting surface. The trailer ball assembly and anti-rotation base plate must fully contact the ball mount when the hex nut is torqued to the listed specification.

Product Photo



ASSEMBLY

Parts List

Item	Qty	Description
1	1	Trailer ball assembly
2	1	Anti-rotation base plate
3	1	Lock washer, 3/4"
4	1	Hex nut, 3/4"

Ball mount sold separately

Step 1

Place the anti-rotate base plate (#2) over the trailer ball shank (#1). The trailer ball must be mounted so that the ball articulation is in the same direction as vehicle travel.

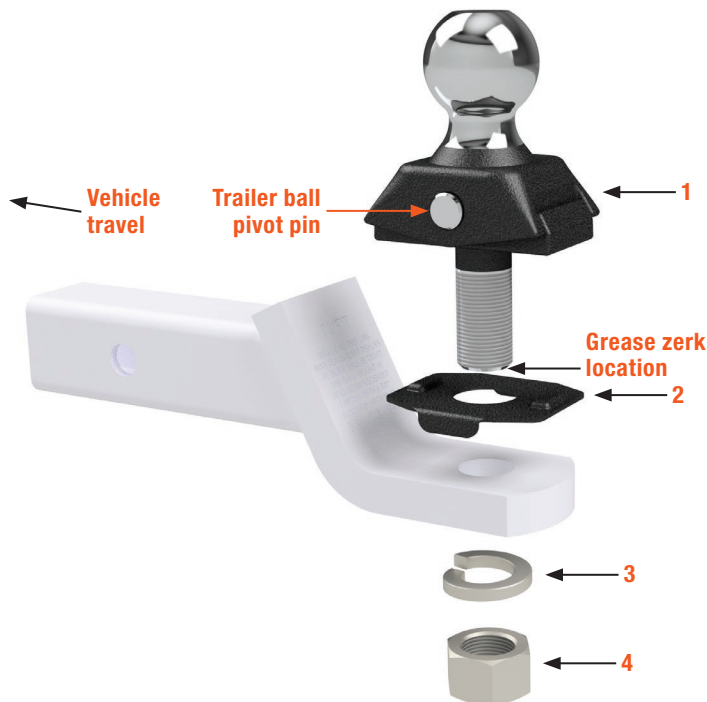
Place the lock washer (#3) over the trailer ball shank and secure with the provided hex nut (#4).

⚠ WARNING

The anti-rotation base plate must be used in the orientation shown or serious injury or death may result.

⚠ WARNING

The anti-rotation base plate tabs must fit freely over the width of the ball mount tongue or serious injury or death may result.



Step 2

Tighten the hex nut (#4) to 160 ft-lbs. The threaded shank must extend beyond the nut when tightened.

⚠ WARNING

Failure to tighten hardware to the specified torque can result in serious injury or death.

Step 3

Grease the trailer ball assembly, using the grease zerk located on the bottom of the shank, before initial use and periodically, with a high-quality molybdenum-based grease.

⚠ WARNING

Failure to grease the trailer ball assembly may lead to failure and can result in serious injury or death.