



Safety glasses should be worn at all times while installing this product.

YEARS: 2018-PRESENT

MAKE: JEEP

MODEL: WRANGLER

STYLE: SUV

**WARNING: NEVER EXCEED YOUR VEHICLE MANUFACTURER'S RECOMMENDED TOWING CAPACITY**

**WEIGHT CARRYING:**  
 TRAILER WEIGHT: 3,500 LBS.  
 TONGUE WEIGHT: 350 LBS.

**GROSS LOAD CAPACITY WHEN USED AS A STRAIGHT LINE PULL:  
 9,000 LBS MAX.**

**PRO INSTALL TIME: 45 MIN.**  
**NOVICE INSTALL TIME: 90 MIN.**

*IF YOU ARE HESITANT TO UNDERTAKE THIS TASK ON YOUR OWN, CONTACT AN AUTHORIZED CURT INSTALLER FOR ADDITIONAL ASSISTANCE.*

**INSTALLATION TIPS:**

- BEFORE YOU BEGIN INSTALLATION, READ ALL INSTRUCTIONS THOROUGHLY.
- TO EASE INSTALLATION, 2 PEOPLE MAY BE REQUIRED.
- USING PROPER TOOLS WILL GREATLY IMPROVE THE QUALITY OF THE INSTALL AND REDUCE THE TIME REQUIRED.



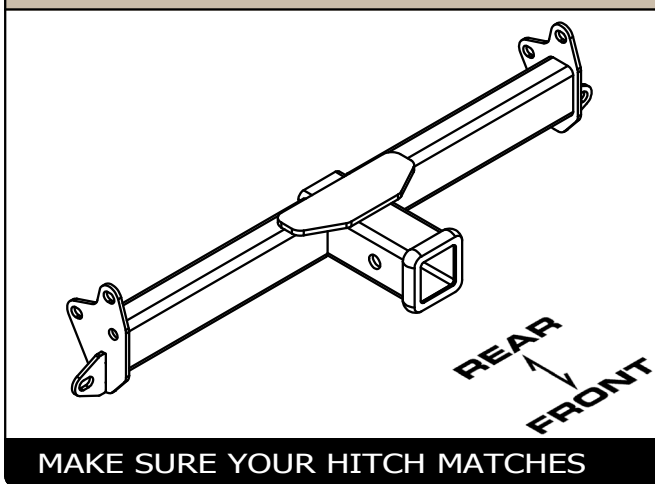
**INSTALLATION REQUIRES:**

RATCHET	11/16" 8mm 16mm 17mm SOCKET	TORQUE WRENCH
TAPE MEASURE	AVIATION SHEARS	MASKING TAPE
SAFETY GLASSES	SCREW DRIVER	

**LEVEL OF DIFFICULTY: EASY**

EASY	MODERATE	CHALLENGING
NO DRILLING REQUIRED		
PART REMOVAL	REMOVE LOWER FASCIA REMOVE AND RETURN SHIELD	
TRIM	TRIM LOWER PLASTIC FASCIA PANEL	

**HITCH ILLUSTRATION:**

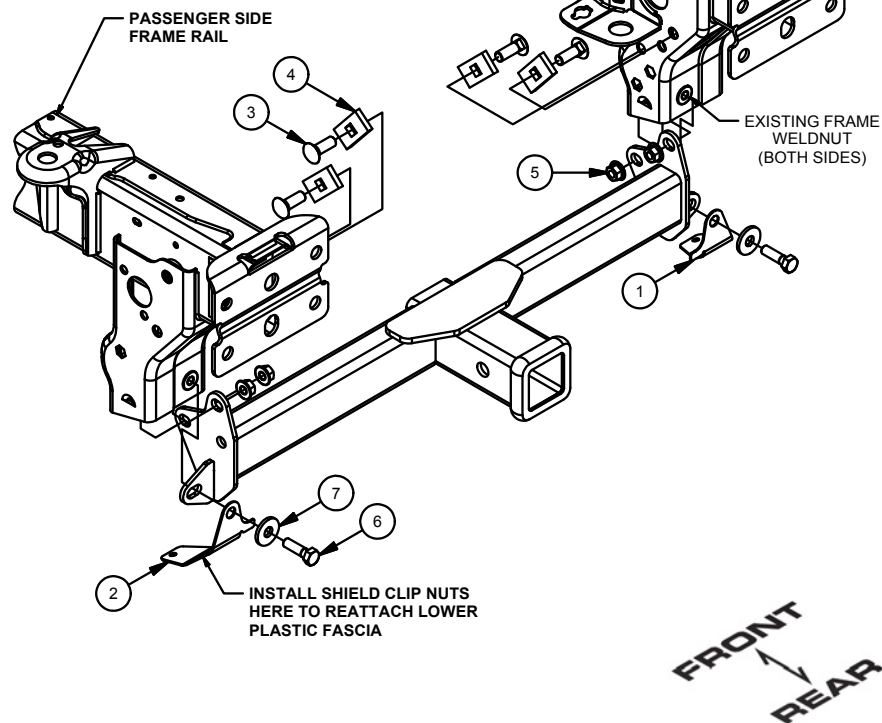
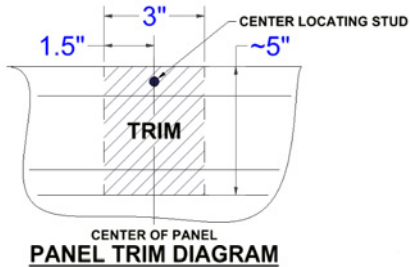


**PERIODICALLY CHECK THIS RECEIVER HITCH TO ENSURE ALL FASTENERS ARE TIGHT AND ALL STRUCTURAL COMPONENTS ARE SOUND**

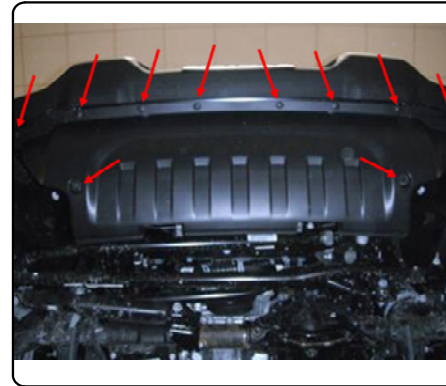
CURT Manufacturing LLC. warrants this product to be free of defects in material and/or workmanship at the time of retail purchase by the original purchaser. If the product is found to be defective, CURT Manufacturing LLC. may repair or replace the product at their option, when the product is returned, prepaid, with proof of purchase. Alteration to, misuse of, or improper installation of this product voids the warranty. CURT Manufacturing LLC.'s liability is limited to repair or replacement of products found to be defective, and specifically excludes liability for incidental or consequential loss or damage.

## INSTALLATION WALKTHROUGH:

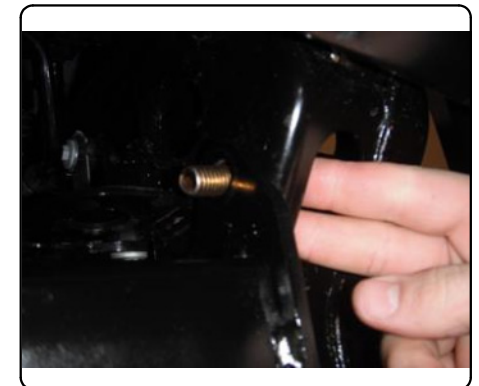
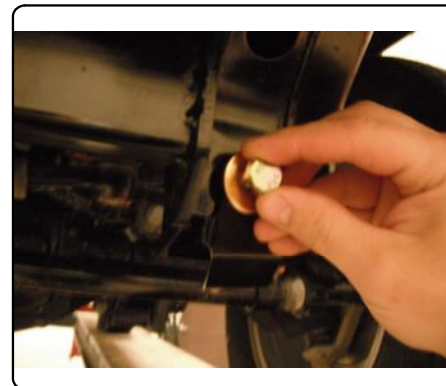
Parts List			
ITEM	QTY	PART NUMBER	DESCRIPTION
1	1	31086-DSFT	DRIVER SIDE FACIA TAB
2	1	31086-PSFT	PASSENGER SIDE FACIA TAB
3	4	7_16 - 14 x 1 1_4 CARRIAGE (GRADE 8)	CARRIAGE BOLT
4	4	CM-SP7	.250 x 1.00 x 2.00" SQUARE HOLE SPACER
5	4	7/16-14	HEX FLANGE NUT
6	2	M10 - 1.5 x 35mm	HEX TAP BOLT
7	2	7/16"	CONICAL TOOTHED WASHER



- 1) Remove 8 plastic push fasteners from the upper edge of the lower front fascia. Using an 8mm socket, remove the (2) 5mm screws holding the lower edge of the plastic fascia. Using a 16mm socket, remove the (2) 10mm bolts holding the steel shield. Return bolts and shield to vehicle owner, but keep the (2) clip nuts for later reinstallation.



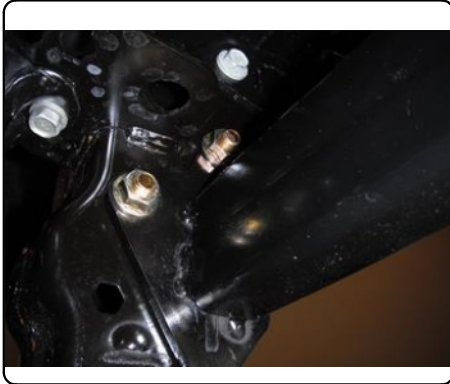
- 2) Raise hitch into position and loosely install the supplied fascia tabs, 10mm bolts and conical washers as shown above. Install the (4) 7/16" carriage bolts and spacers into the remaining mounting holes as shown above by inserting through the closest access hole.



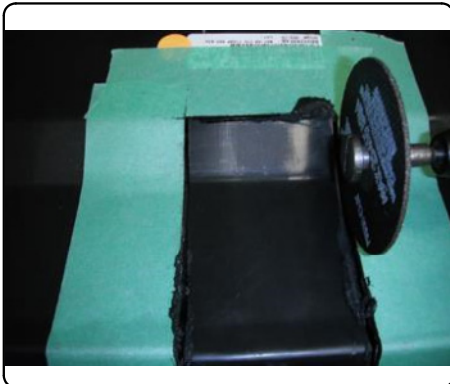
## INSTALLATION WALKTHROUGH:

- 3) Loosely install the supplied 7/16" hex flanges nuts. Torque the 10mm fasteners to 45 lb.-ft. and all 7/16" fasteners to 60 lb.-ft.

**Note:** The small holes in the fascia tabs should be about 31.25" apart to line up with the fascia panel mounting holes.



- 4) Trim the lower plastic fascia as shown in the [Panel Trim Diagram](#) to reinstall around the receiver tube of the hitch. Reinstall lower plastic fascia with original fasteners.



**31086****JEEP WRANGLER****3/8/2018**

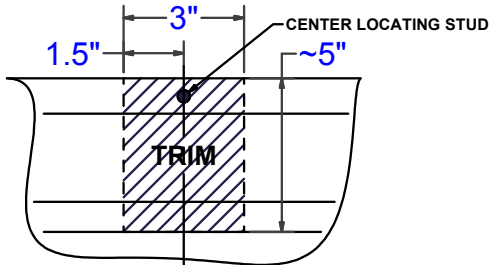
GROSS LOAD CAPACITY WHEN USED AS A WEIGHT CARRYING HITCH: 3,500 LBS. TRAILER WEIGHT & 350 LBS. TONGUE WEIGHT.  
 GROSS LOAD CAPACITY WHEN USED AS A STRAIGHT LINE PULL: 9,000 LBS. MAX. LINE PULL.



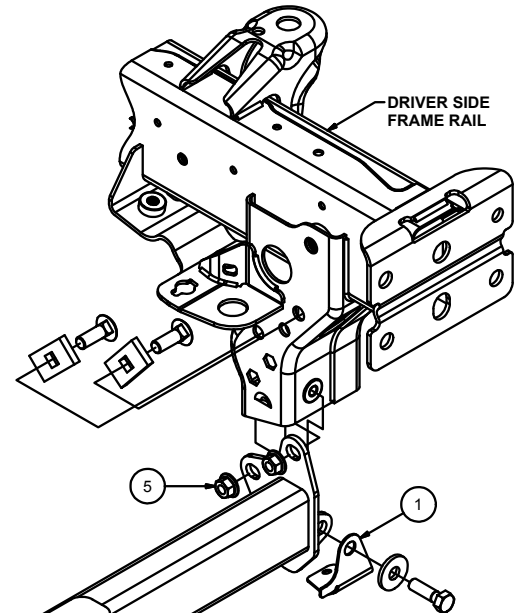
**WARNING: \*\*\* DO NOT EXCEED VEHICLE MANUFACTURER'S RECOMMENDED TOWING CAPACITY. \*\*\***



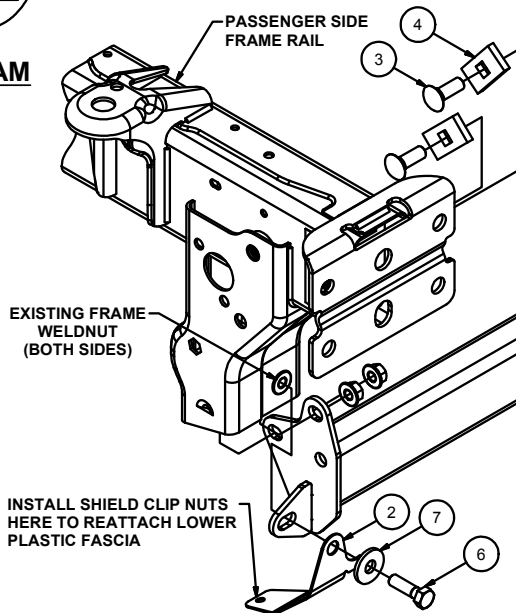
Parts List			
ITEM	QTY	PART NUMBER	DESCRIPTION
1	1	31086-DSFT	DRIVER SIDE FACIA TAB
2	1	31086-PSFT	PASSENGER SIDE FACIA TAB
3	4	7_16 - 14 x 1_4 CARRIAGE (GRADE 8)	CARRIAGE BOLT
4	4	CM-SP7	.250 x 1.00 x 2.00" SQUARE HOLE SPACER
5	4	7/16-14	HEX FLANGE NUT
6	2	M10 - 1.5 x 35mm	HEX TAP BOLT
7	2	7/16"	CONICAL TOOTHED WASHER



CENTER OF PANEL  
**PANEL TRIM DIAGRAM**



TOOLS REQUIRED
RATCHET
TORQUE WRENCH
SAFETY GLASSES
STRAIGHT SCREW DRIVER
AVIATOR SHEARS
8mm, 16mm, 17mm SOCKETS
11/16" SOCKET
TAPE MEASURE
MASKING TAPE



HITCH WEIGHT: 16 LBS.

**INSTALL TIME**

PROFESSIONAL: 45 MINUTES

NOVICE (DIY): 90 MINUTES

**INSTALL NOTES:**

- REMOVE SKID SHIELD
- REMOVE LOWER FASCIA PANEL
- NO DRILLING REQUIRED
- TRIM LOWER FASCIA PANEL

## INSTALLATION STEPS

- 1) Remove (8) plastic push fasteners from the upper edge of the lower front fascia. Using an 8mm socket, remove the (2) 5mm screws holding the lower edge of the plastic fascia. Using a 16mm socket, remove the (2) 10mm bolts holding the steel shield. Return bolts and shield to vehicle owner, but keep the (2) clip nuts for later reinstallation.
  - 2) Raise hitch into position and loosely install the supplied fascia tabs, 10mm bolts and conical washers as shown above. Install the (4) 7/16" carriage bolts and spacers into the remaining mounting holes as shown above by inserting through the closest access hole.
  - 3) Loosely install the supplied 7/16" hex flanges nuts. Torque the 10mm fasteners to 45 lb.-ft. and all 7/16" fasteners to 60 lb.-ft.
- Note:** The small holes in the fascia tabs should be about 31.25" apart to line up with the fascia panel mounting holes.
- 4) Trim the lower plastic fascia as shown in the Panel Trim Diagram to reinstall around the receiver tube of the hitch. Reinstall lower plastic fascia with original fasteners.

**PERIODICALLY CHECK THIS RECEIVER HITCH TO ENSURE THAT ALL FASTENERS ARE TIGHT AND THAT ALL STRUCTURAL COMPONENTS ARE SOUND.**

CURT Manufacturing LLC., warrants this product to be free of defects in material and/or workmanship at the time of retail purchase by the original purchaser. If the product is found to be defective, CURT Manufacturing LLC., may repair or replace the product, at their option, when the product is returned, prepaid, with proof of purchase. Alteration to, misuse of, or improper installation of this product voids the warranty. CURT Manufacturing LLC.'s liability is limited to repair or replacement of products found to be defective, and specifically excludes liability for incidental or consequential loss or damage.

# JEEP WRANGLER

**\*\*\*DO NOT EXCEED VEHICLE MANUFACTURER'S RECOMMENDED TOWING CAPACITY\*\*\*.**

## FRONT MOUNTED ACCESSORIES

1) Do not exceed front axle Gross Weight Rating (GAWR). Consult owners manual or specification plate located on driver's door frame. Measure gross front axle weight by placing front wheels of loaded vehicle on a scale.

**WARNING:** Exceeding GAWR may overload the front axle and/or suspension. This could result in **accident, property damage and personal injury.**

- 2) Reposition front mounted license plate if obstructed.
- 3) Do not obstruct vehicle lights.
- 4) Allow free air flow into grille opening.
- 5) Rear wheel traction may be reduced. This could effect handling. Reduce speed and drive with caution.
- 6) Accessories extend front of vehicle. This may reduce approach angle. Use caution when parking and maneuvering.
- 7) Do not obstruct driver view.

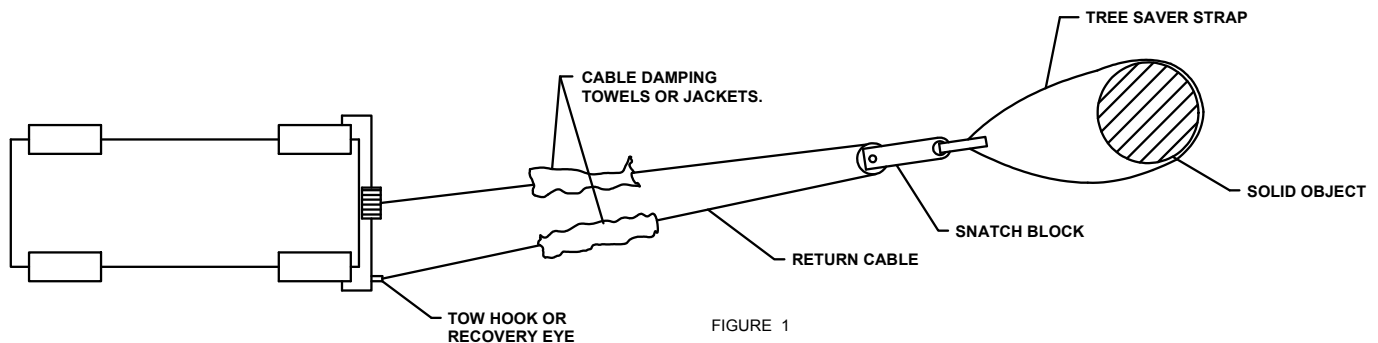
## VEHICLE RECOVERY AND WINCHING TIPS

1) Use OEM tow hooks, recovery eyes or a clevis mount for attachment of a tow strap or winch cable.

**WARNING:** NEVER use a ball and/or ball mount as an anchor point for tow strap or winch cable. Severe personal injury or death could result.

- 2) Observe winch manufacturer's recommendations, cautions and warnings.
- 3) Attach return cable to tow hook or recovery eye when using a snatch block (See figure 1).

**CAUTION:** Do not attach return cable to winch mount. This may overload winch mount and/or front mounted receiver.

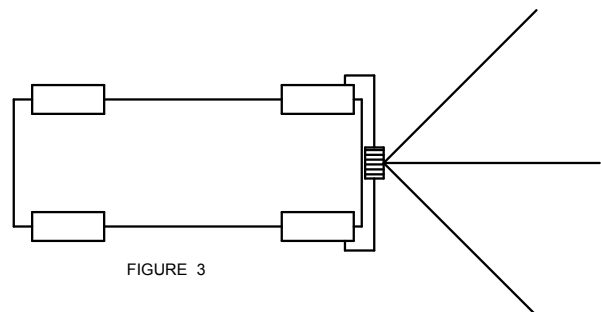
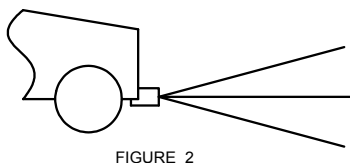


## RATING

For **Maximum** line pull rating, winch cable must not exceed:

- 15 degree angle up or down from horizontal (See Figure 2).
- 45 degree angle left or right from straight ahead (See Figure 3).

**CAUTION:** Exceeding the maximum line pull rating may over load winch, winch mount, and/or front mounted receiver.



CURT Manufacturing LLC., warrants this product to be free of defects in material and/or workmanship at the time of retail purchase by the original purchaser. If the product is found to be defective, CURT Manufacturing LLC., may repair or replace the product, at their option, when the product is returned, prepaid, with proof of purchase. Alteration to, misuse of, or improper installation of this product voids the warranty. CURT Manufacturing LLC.'s liability is limited to repair or replacement of products found to be defective, and specifically excludes liability for incidental or consequential loss or damage.