

INSTALLATION MANUAL

18088

Level of Difficulty

Easy

Installation difficulty levels are based on time and effort involved and may vary depending on the installer level of expertise, condition of the vehicle and proper tools and equipment.

Weight Carrying Capacity

1 bike	65 lbs.
2 bikes	130 lbs.

Parts List

Item	Qty	Description
1	2	Tray assembly
2	1	Shank assembly
3	2	Tire / frame hook assembly
4	2	Wheel basket
5	2	Tray spacer
6	2	Wheel strap sleeve
7	2	Key
8	1	Clevis pin, 1/2"
9	2	Button head cap screw, M6-1.0 x 10mm
10	4	Button head cap screw, M8-1.25 x 35mm
11	4	Nylock nut, M8-1.25
12	4	Carriage bolt, 3/8"-16 x 4"
13	4	Flat washer, 3/8"
14	4	Nylock nut, 3/8"-16

Tools Required

Torx wrench, T-27 (included)	Box wrench, 13mm / 14mm (included)
Hex drive wrench, 5mm (included)	--

⚠ WARNING

Never exceed the vehicle manufacturer's recommended towing capacity.

Never exceed the product's weight capacity.

Do not modify or use this accessory for purposes other than for which it was designed.

It is the user's responsibility to adhere to all state and federal laws regarding obstruction of vehicle lighting (i.e. brake lights, taillights, turn signals and backup lights) and license plate when using this accessory.

Product Photo



⚠ CAUTION

This product is not designed for off-road use.

Do not install this product on a trailer or towed vehicle.

When transporting heavier bikes such as e-bikes and tilting the rack for rear vehicle access is necessary, a team lift may be required to prevent injury and / or product damage.

Always be mindful of accessories extending beyond vehicle when operating.

NOTICE

Before you begin installation, read all instructions thoroughly.

Proper tools will improve the quality of installation and reduce the time required.

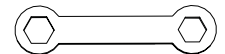
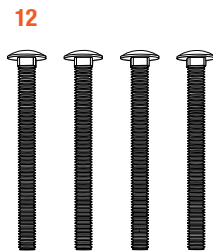
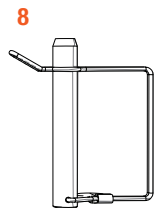
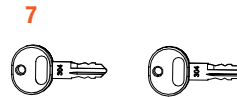
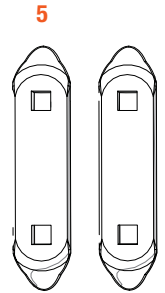
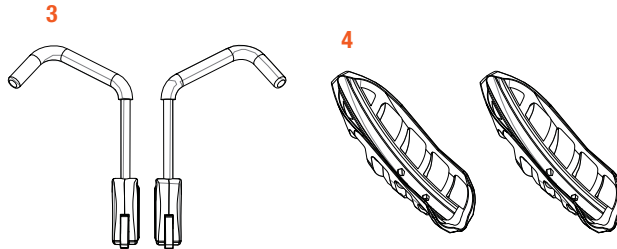
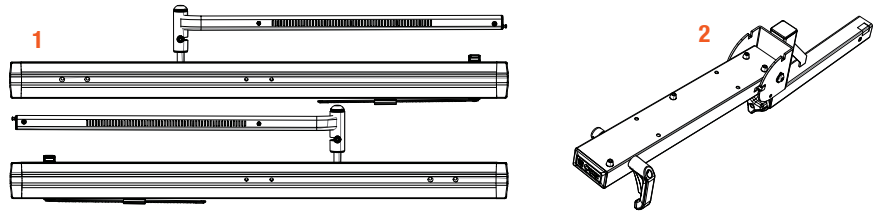
Remove this accessory before entering automatic car washes.

Periodic inspection of your product should be performed to ensure all hardware and / or components remain secure.

ASSEMBLY

Parts List

Item	Qty	Description
1	2	Tray assembly
2	1	Shank assembly
3	2	Tire / frame hook assembly
4	2	Wheel basket
5	2	Tray spacer
6	2	Wheel strap sleeve
7	2	Key
8	1	Clevis pin, 1/2"
9	2	Button head cap screw, M6-1.0 x 10mm
10	4	Button head cap screw, M8-1.25 x 35mm
11	4	Nylock nut, M8-1.25
12	4	Carriage bolt, 3/8"-16 x 4"
13	4	Flat washer, 3/8"
14	4	Nylock nut, 3/8"-16



Torx wrench,
T-27

Hex drive
wrench, 5mm

Box wrench,
13mm / 14mm

Step 1

Place an M8 nylock nut (#11) into each hex-shaped hole on one of the wheel baskets (#4) as shown.

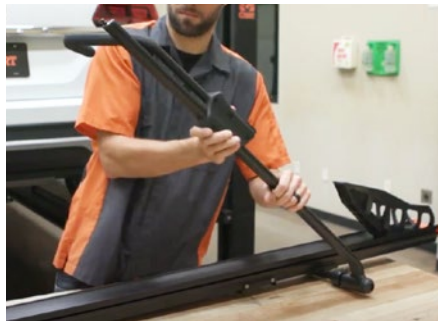
Place the wheel basket (#4) onto one of the tray assemblies (#1), aligning the wheel basket holes with those in the tray. Ensure the tallest portion of the wheel basket is positioned towards the center of the tray assembly. Secure the wheel basket with M8 button head cap screws (#10) using the provided 5mm hex drive wrench. Tighten the M8 hardware firmly without crushing the tray.



Step 2

Align and slide a tire / frame hook assembly (#3) onto the arm of the tray assembly (#1) as shown. Ensure the hook is facing inward toward the tray and the release button is facing upwards.

Thread an M6 button head cap screw (#9) into the hole at the end of the tray assembly arm as shown. Tighten firmly with the provided T-27 Torx wrench.



Step 3

Align and slide a wheel strap sleeve (#6) over the tray assembly (#1) wheel strap as shown.

Repeat steps 1 through 3 for the other tray assembly.



Step 4

Orientate the tray assembly with the CURT logo onto the shank assembly (#2) as shown. Align the tray holes with those in the shank assembly. Place a tray spacer (#5) onto the tray, aligning its holes with those in the tray. Insert two 3/8" carriage bolts (#12) through the spacer, tray and shank assembly. Place a 3/8" flat washer (#13) and 3/8" nylock nut (#14) onto each bolt.

Tighten each nut firmly with the provided M14 wrench without crushing the shank assembly tube.



Step 5

Orientate the remaining tray assembly onto the shank assembly (#2) as shown, aligning the holes in each. Proceed to assemble with hardware (#5, #12, #13 and #14) as completed in step 4.



INSTALLATION AND USE

Step 6

Insert the shank into a 2" receiver, aligning the holes of the shank with the holes of the receiver. Insert a 1/2" clevis pin (#8) and latch.

Rotate the anti-rattle knob clockwise until there is firm resistance to turning.

To discourage theft, insert the key (#7) under the rubber cover and turn a 1/2-turn clockwise. The knob is now disengaged and cannot be tightened or loosened.



Step 7

To adjust the rack between vertical, horizontal and tilted positions, squeeze the trigger on the handle and rotate clockwise. Adjust the rack position and release the handle. A 'click' will be heard when the rack reaches its horizontal or vertical position.

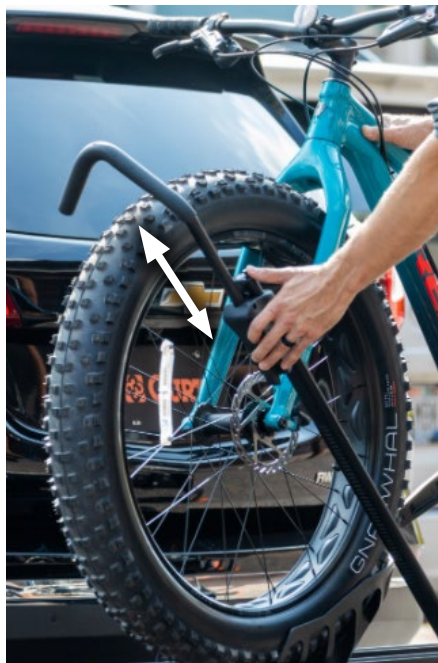


Step 8

With the rack positioned horizontally, place a bike onto one of the trays with the front tire nested into the wheel basket. Raise the arm with the hook assembly into position over the tire and frame. Depress and hold the hook assembly lever while sliding the hook assembly along the arm if adjustment is necessary for positioning. Push the hook downward into position firmly as shown.

NOTICE

For bikes equipped with a fork-mounted brake caliper, take care not to damage the caliper with excessive force.



Step 9

To discourage theft, pull the locking cable from the arm and pull through the bike frame. Press the tip of the cable firmly into the locking mechanism hole until a 'click' is heard.

To remove the cable, insert the key, turn and hold while pulling the cable from the lock. Feed the cable back inside the arm and push the cable end firmly until it snaps into place.



Step 10

Position the wheel strap to be centered on the bike's rear wheel. Insert the strap into the latch as shown. Adjust the wheel strap sleeve (#6) over the wheel and pull the strap firmly through the latch.

To remove the strap, press and hold the release lever while pulling the strap from the latch.



Step 11

To allow rear-vehicle access, the rack can be tilted away from the vehicle. Support the rack while rotating the release handle clockwise allowing the rack to stop at its lowest position.

WARNING

When transporting heavier bikes such as e-bikes, a team lift may be required when changing rack positions to prevent injury and / or product damage.

Do not transport the rack in the lowest position as this may cause damage to the product or cargo.



Step 12

When transporting the rack with an empty tray or trays, the rack components must be secured as shown. Place the tire / frame hook beneath the tray. Slight downward pressure on the arm may be necessary while sliding the hook inward. Ensure the wheel strap is buckled and the cable is inserted fully into the arm.

When unloaded, the rack may be transported in the vertical position.

