

14048

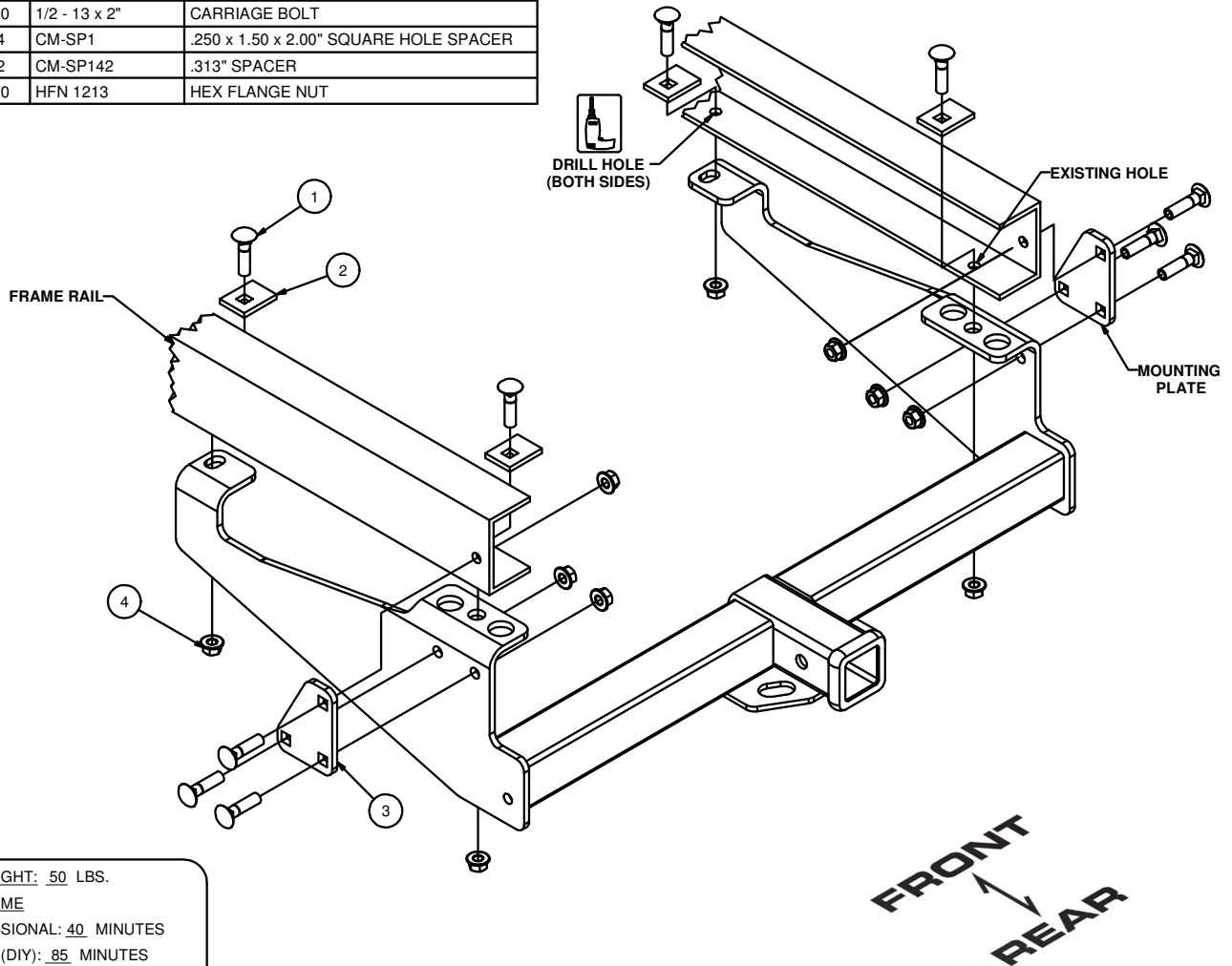
1999-CURRENT FORD F-350, F-450, F-550, & F-650

6/13/2012

GROSS LOAD CAPACITY WHEN USED AS A WEIGHT CARRYING HITCH: 10,000 LBS. TRAILER WEIGHT & 1,000 LBS. TONGUE WEIGHT.
 GROSS LOAD CAPACITY WHEN USED AS A WEIGHT DISTRIBUTION HITCH: 12,000 LBS. TRAILER WEIGHT & 1,200 LBS. TONGUE WEIGHT

DO NOT EXCEED VEHICLE MANUFACTURER'S RECOMMENDED TOWING CAPACITY.

| Parts List | | | | |
|------------|-----|---------------|--|--|
| ITEM | QTY | PART NUMBER | DESCRIPTION | |
| 1 | 10 | 1/2 - 13 x 2" | CARRIAGE BOLT | |
| 2 | 4 | CM-SP1 | .250 x 1.50 x 2.00" SQUARE HOLE SPACER | |
| 3 | 2 | CM-SP142 | .313" SPACER | |
| 4 | 10 | HFN 1213 | HEX FLANGE NUT | |



HITCH WEIGHT: 50 LBS.

INSTALL TIME

PROFESSIONAL: 40 MINUTES

NOVICE (DIY): 85 MINUTES

INSTALL NOTES:

DRILLING REQUIRED

INSTALLATION STEPS

- 1) Raise hitch into position and clamp in place. Use the rivet clearance holes in the side plates for proper alignment.
- 2) With the hitch in place, mark the rearmost hole for drilling. When you have the drill location marked, use a 9/16" drill bit to make the required mounting hole.
- 3) Fasten the hitch to the frame as shown, fastening to the holes in the back of the frame first and then to the drilled holes in the front.
- 4) Attach the mounting plates to the hitch and then fasten to the truck as shown.
- 5) Torque all hardware to 110 lb.-ft.

PERIODICALLY CHECK THIS RECEIVER HITCH TO ENSURE THAT ALL FASTENERS ARE TIGHT AND THAT ALL STRUCTURAL COMPONENTS ARE SOUND.

