

INSTALLATION MANUAL

14019

Level of Difficulty

Moderate

Installation difficulty levels are based on time and effort involved and may vary depending on the installer level of expertise, condition of the vehicle and proper tools and equipment.

Weight Carrying Capacity

Gross trailer weight (GTW)	10,000 lbs.
Tongue weight (TW)	1,000 lbs.

Weight Distribution Capacity

Weight distribution (WD)	12,000 lbs.
WD tongue weight (WDTW)	1,200 lbs.

Parts List

Item	Qty	Description
1	1	Flat head socket cap screw, 3/4"-10 x 3-1/4", grade 8

Tools Required

Ratchet	Torque wrench
Hex bit socket, 1/2"	Socket extension, 6"
Socket, 10mm	Adjustable wrench
Socket, 15mm	Socket, 7/8"
Socket, 21mm	Safety glasses

* For a tools reference guide visit curtmfg.com/trailer-hitch-installation

⚠ WARNING

Never exceed the vehicle manufacturer's recommended towing capacity.

Product Photo



NOTICE

Before you begin installation, read all instructions thoroughly.

Proper tools will improve the quality of installation and reduce the time required.

This installation requires:

- Lowering of the exhaust (if applicable)
- Use of existing hardware
- No trimming
- No drilling
- Some models may require adjustment to the factory safety chain loops to provide clearance for the hitch pin. Use an adjustable wrench to bend the loops upward as needed.

Periodic inspection of the trailer hitch should be performed to ensure all mounting hardware remains tight and structural components are secure.

To help prevent damage to the product or vehicle, refer to the specified torque specifications when securing hardware during the installation process.

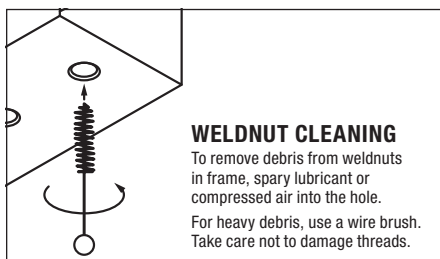
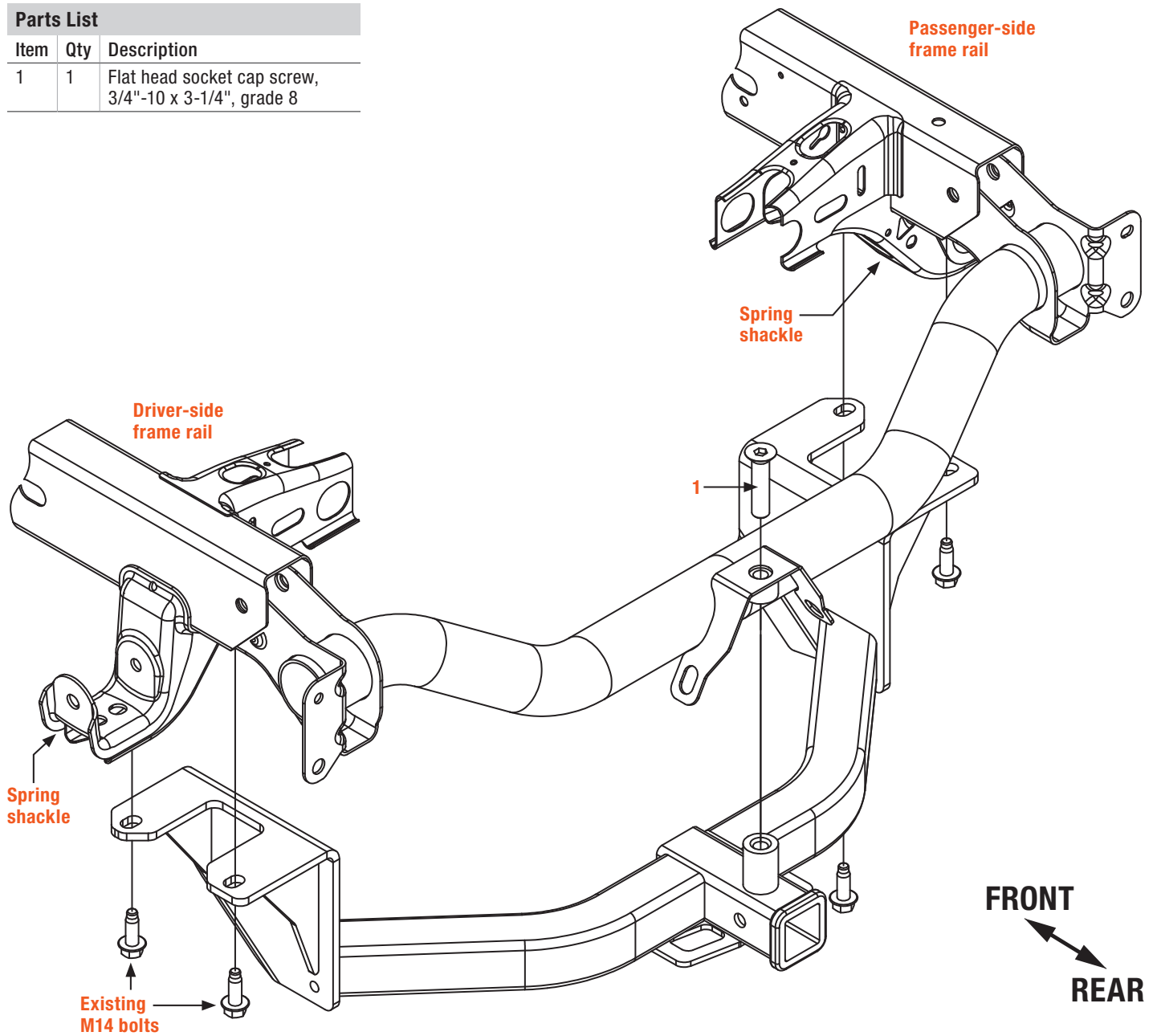
SAFETY INSTRUCTIONS

Safety glasses should be worn at all times while installing this product.

ASSEMBLY

Parts List

Item	Qty	Description
1	1	Flat head socket cap screw, 3/4"-10 x 3-1/4", grade 8



Before You Begin

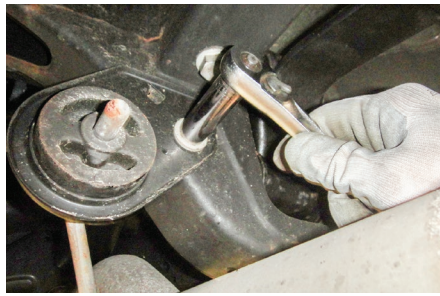
Some models may require adjustment to the factory safety chain loops to provide clearance for the hitch pin. Use an adjustable wrench to bend the loops upward as needed.



Step 1 - Vehicles With A Dual Exhaust System Only

If your vehicle does not have dual exhaust skip to Step 3.

Using a 15mm socket, remove the exhaust hanger bracket on the driver side. Remove the passenger side exhaust hanger bracket hardware, but leave the bracket on the exhaust hanger.



Step 2 - Vehicles With A Dual Exhaust System Only

Using a 10mm socket, locate and remove the three hex bolts securing the driver side exhaust bezel. Set aside for reinstallation.



Step 3 - All Vehicles

Remove the two existing hex bolts from the frame on both sides of the vehicle.



Step 4 - All Vehicles

Remove the factory 7-way connector and cover for the spare tire removal access by squeezing the clips and pushing outward.



Step 5 - All Vehicles

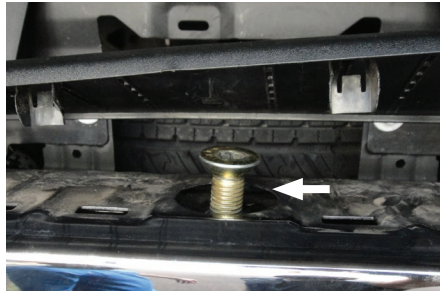
Remove top plastic cover from the rear bumper by carefully prying up on an outside edge and working towards the middle of the vehicle, pushing on the retainers when reachable.



Step 6 - All Vehicles

Raise the trailer hitch into position. Loosely secure the side plates to the frame using the factory hardware and the provided flat head socket cap screw (#1).

Note: If the exhaust is in the way you can move it at this time.



Step 7 - All Vehicles

Torque the factory hardware to 126 lb-ft. and 3/4" hardware to 320 lb-ft.

If applicable, reinstall the exhaust hanger brackets removed in Step 1 and the exhaust bezel removed in Step 2.

Reinstall the plastic panel removed in Step 5 and the 7-way factory connector and cover removed in Step 4.

