

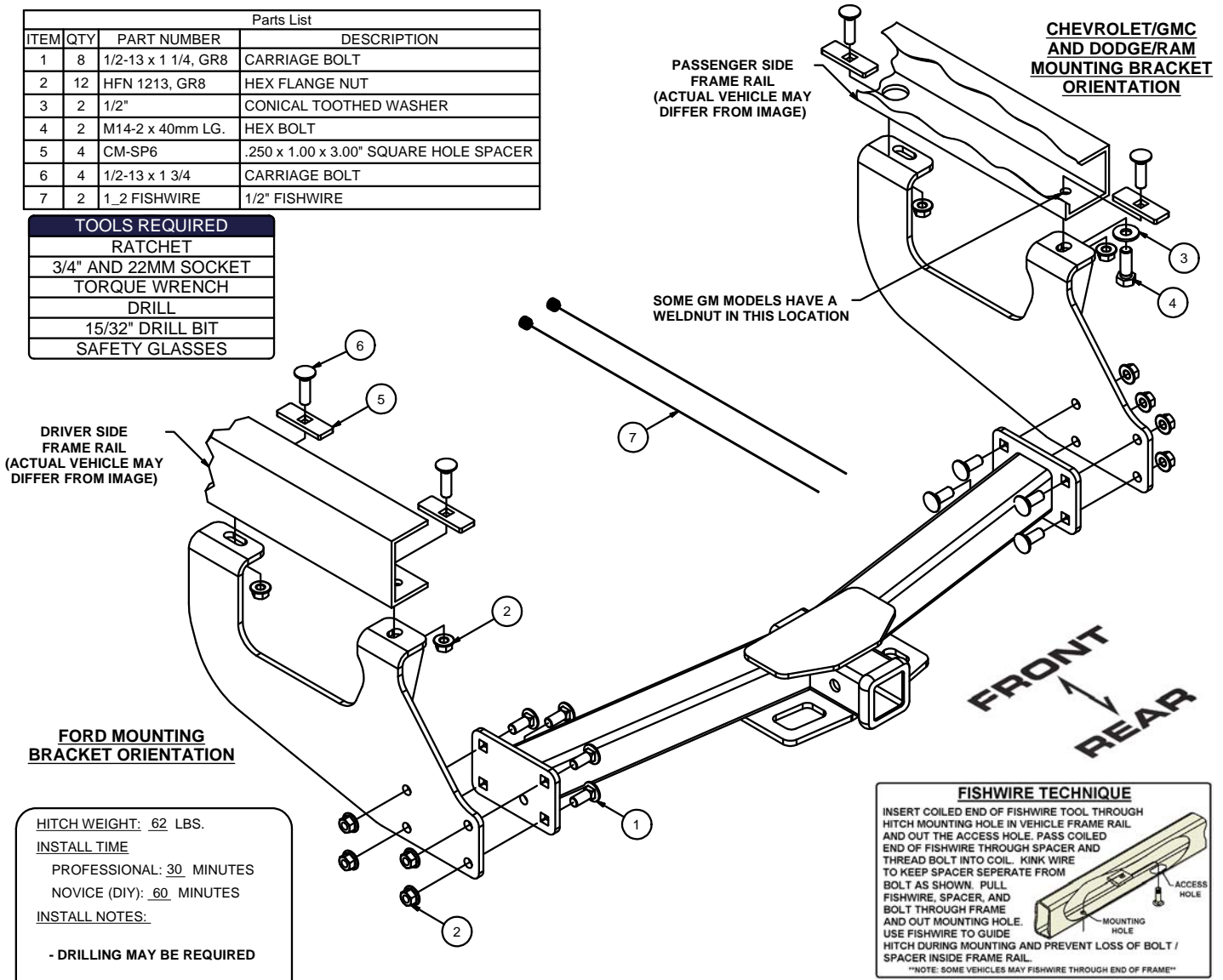
13902 DODGE / RAM / FORD / CHEVROLET / GMC MULTI-FIT

GROSS LOAD CAPACITY WHEN USED AS A WEIGHT CARRYING HITCH: 8,000 LBS. TRAILER WEIGHT & 800 LBS. TONGUE WEIGHT.
 GROSS LOAD CAPACITY WHEN USED AS A WEIGHT DISTRIBUTION HITCH: 12,000 LBS. TRAILER WEIGHT & 1,200 LBS. TONGUE WEIGHT



Parts List			
ITEM	QTY	PART NUMBER	DESCRIPTION
1	8	1/2-13 x 1 1/4, GR8	CARRIAGE BOLT
2	12	HFN 1213, GR8	HEX FLANGE NUT
3	2	1/2"	CONICAL TOOTHED WASHER
4	2	M14-2 x 40mm LG.	HEX BOLT
5	4	CM-SP6	.250 x 1.00 x 3.00" SQUARE HOLE SPACER
6	4	1/2-13 x 1 3/4	CARRIAGE BOLT
7	2	1_2 FISHWIRE	1/2" FISHWIRE

TOOLS REQUIRED	
RATCHET	
3/4" AND 22MM SOCKET	
TORQUE WRENCH	
DRILL	
15/32" DRILL BIT	
SAFETY GLASSES	



HITCH WEIGHT: 62 LBS.
INSTALL TIME
 PROFESSIONAL: 30 MINUTES
 NOVICE (DIY): 60 MINUTES
INSTALL NOTES:
 - DRILLING MAY BE REQUIRED

FISHWIRE TECHNIQUE
 INSERT COILED END OF FISHWIRE TOOL THROUGH HITCH MOUNTING HOLE IN VEHICLE FRAME RAIL AND OUT THE ACCESS HOLE. PASS COILED END OF FISHWIRE THROUGH SPACER AND THREAD BOLT INTO COIL. KINK WIRE TO KEEP SPACER SEPARATE FROM BOLT AS SHOWN. PULL FISHWIRE, SPACER, AND BOLT THROUGH FRAME AND OUT MOUNTING HOLE. USE FISHWIRE TO GUIDE HITCH DURING MOUNTING AND PREVENT LOSS OF BOLT / SPACER INSIDE FRAME RAIL.
NOTE: SOME VEHICLES MAY FISHWIRE THROUGH END OF FRAME

INSTALLATION STEPS

1. Place supplied fasteners into position on vehicle where possible without drilling, per application. Fishwiring may be required for some applications. (see fishwire technique above)
2. Mount side plates to frame rails as shown above (Ford in, Chevy/GMC and Dodge/RAM out). Raise center section into position and loosely secure to side plates.
3. Drill remaining holes if necessary. ('03-'04 Ford trucks)
4. Install remaining fasteners.
5. Torque all 7/16" fasteners to 70 lb-ft, all 1/2" fasteners to 110 lb-ft, and all 14mm fasteners to 126 lb-ft.

PERIODICALLY CHECK THIS RECEIVER HITCH TO ENSURE THAT ALL FASTENERS ARE TIGHT AND THAT ALL STRUCTURAL COMPONENTS ARE SOUND.

Scan for more information

CURT Manufacturing LLC., warrants this product to be free of defects in material and/or workmanship at the time of retail purchase by the original purchaser. If the product is found to be defective, CURT Manufacturing LLC., may repair or replace the product, at their option, when the product is returned, prepaid, with proof of purchase. Alteration to, misuse of, or improper installation of this product voids the warranty. CURT Manufacturing LLC.'s liability is limited to repair or replacement of products found to be defective, and specifically excludes liability for incidental or consequential loss or damage.