

INSTALLATION MANUAL

13504

Level of Difficulty

Moderate

Installation difficulty levels are based on time and effort involved and may vary depending on the installer level of expertise, condition of the vehicle and proper tools and equipment.

Weight Carrying Capacity

Gross trailer weight (GTW)	4,000 lbs.
Tongue weight (TW)	600 lbs.

Weight Distribution Capacity

Weight distribution (WD)	4,000 lbs.
WD tongue weight (WDTW)	600 lbs.

Parts List

Item	Qty	Description
1	2	Carriage bolt, 7/16"-14 UNC, 1-3/4"
2	4	Hex head cap screw, M12 x 1.75", 40
3	2	Serrated flange nut, 7/16"-14 UNC
4	4	Conical-toothed washer, 1/2"
5	2	Fishwire, 7/16"
6	2	Square hole spacer, .250" x .88" x 2.25"

Tools Required

Ratchet	Socket, 19mm
Torque wrench	Socket, 11/16"
Socket, 7mm	Paint marker
Socket, 10mm	Utility Knife / aviation shears
Socket, 18mm	Tape measure

⚠ WARNING

Never exceed the vehicle manufacturer's recommended towing capacity.

Product Photo



NOTICE

Before you begin installation, read all instructions thoroughly.

Proper tools will improve the quality of installation and reduce the time required.

This installation requires:

- Trimming or removal of bumper panel insert
- Trimming of underbody panel
- Reverse fishwiring
- Exhaust relocation onto hitch

Periodic inspection of the trailer hitch should be performed to ensure all mounting hardware remains tight and structural components are secure.

To help prevent damage to the product or vehicle, refer to the specified torque specifications when securing hardware during the installation process.

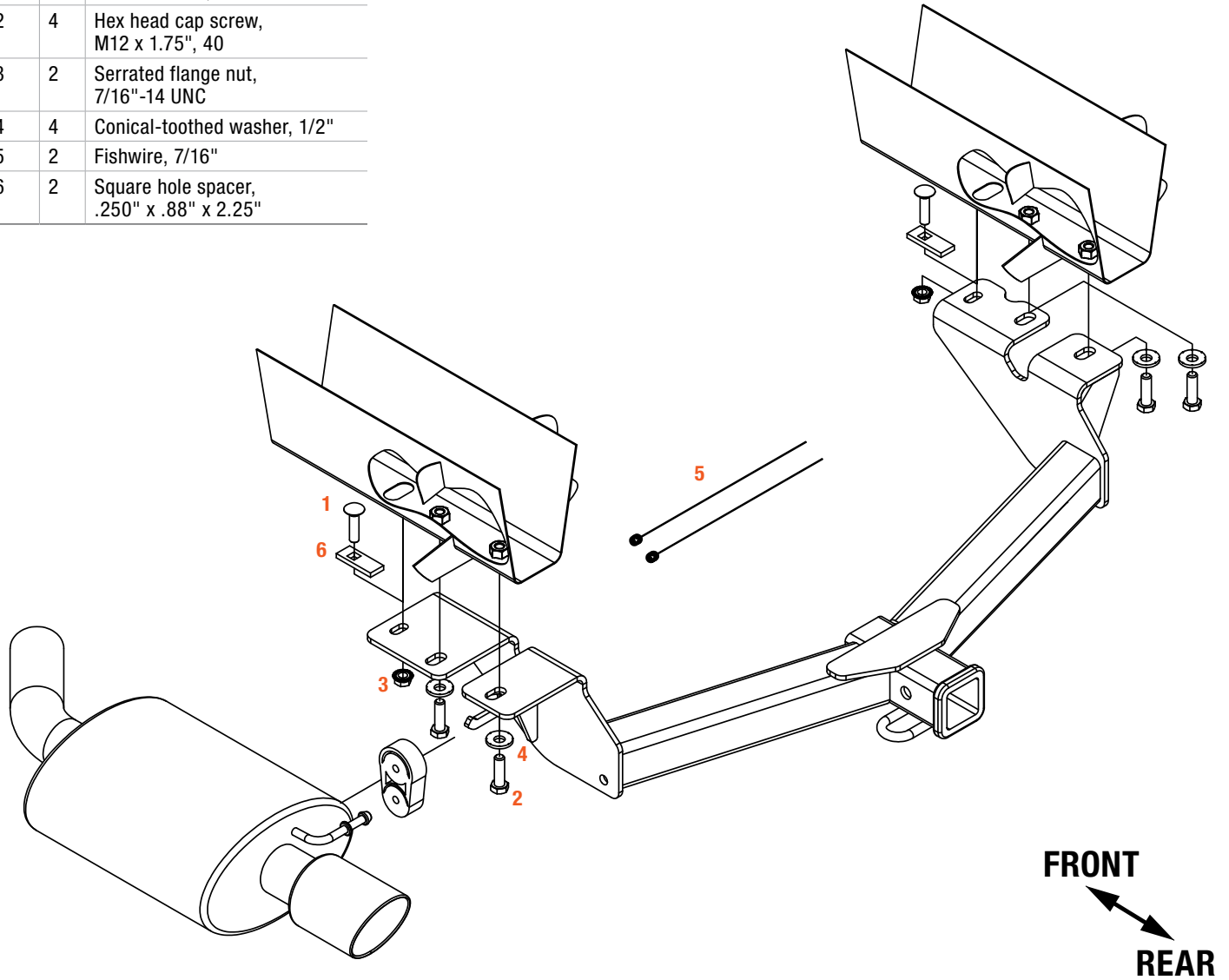
SAFETY INSTRUCTIONS

Safety glasses should be worn at all times while installing this product.

ASSEMBLY

Parts List

Item	Qty	Description
1	2	Carriage bolt, 7/16"-14 UNC, 1-3/4"
2	4	Hex head cap screw, M12 x 1.75", 40
3	2	Serrated flange nut, 7/16"-14 UNC
4	4	Conical-toothed washer, 1/2"
5	2	Fishwire, 7/16"
6	2	Square hole spacer, .250" x .88" x 2.25"

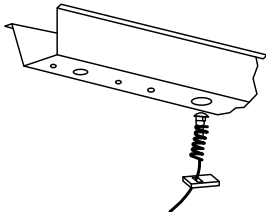


REVERSE PULL FISHWIRE TECHNIQUE

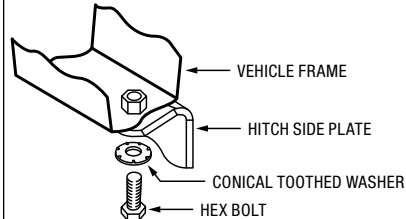
Attach the fishwire to the carriage bolt and slide the spacer onto the fishwire.

Push the bolt through the hole followed by the spacer, as shown.

Pull the bolt back into position, protruding from the frame.



CONICAL TOOTHED WASHER ORIENTATION



Step 1

Lower the exhaust by unhooking three rubber hangers, two by the muffler and one by the exhaust tip.

Be sure to support the exhaust so as not to damage it.



Step 2

Using a 7mm socket, remove the eight screws from the underbody panel. Remove the plastic push pin to remove the underbody panel and set aside for later reinstallation.



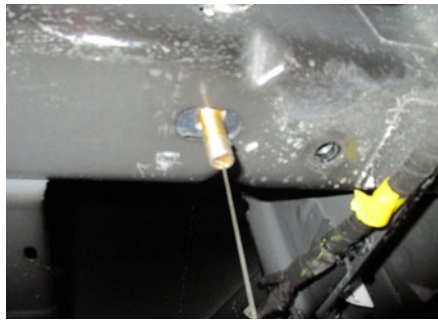
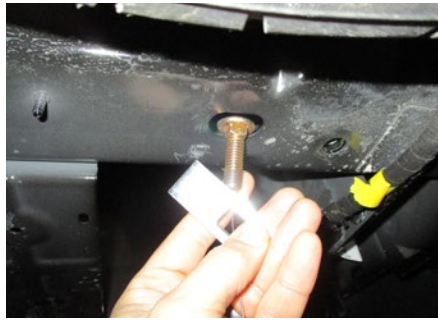
Step 3

Remove the two factory bolts in the bottom of the frame using an 18mm socket. Next, remove the two factory bolts securing the rearward exhaust hanger bracket with a 10mm socket.



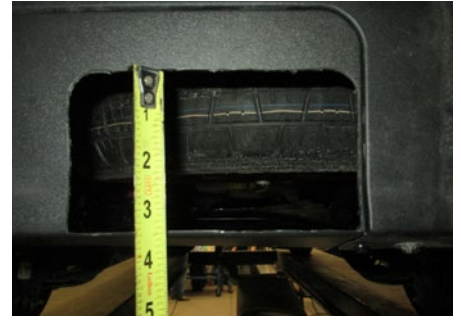
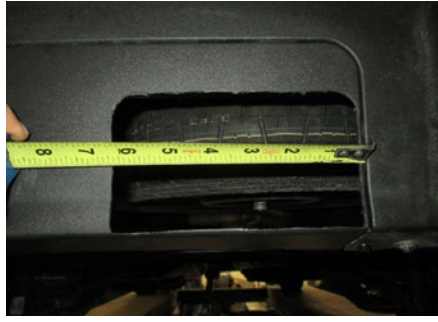
Step 4

Reverse fishwire the supplied 7/16" carriage bolts (#1) and spacers (#6) into the forward mounting points. Leave the fish wires attached.



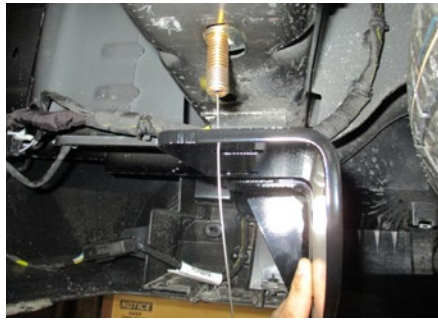
Step 5

Using the tape measure and utility knife / aviation shears, mark and trim the bumper insert panel as shown. The panel may be removed if trimming is not desired by removing the two rivets at the bottom of the panel.



Step 6

Raise the hitch into position, threading the fish wires into the mounting holes and loosely installing the supplied M12 hex head cap screws (#2) and conical washers (#4). Remove the fish wires and install the 7/16" flange nuts (#3).



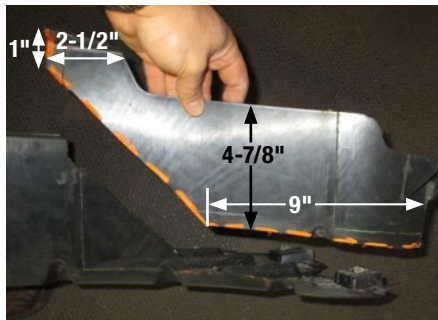
Step 7

Torque all M12 fasteners to 79 ft-lbs.
and all 7/16" fasteners to 59 ft-lbs.



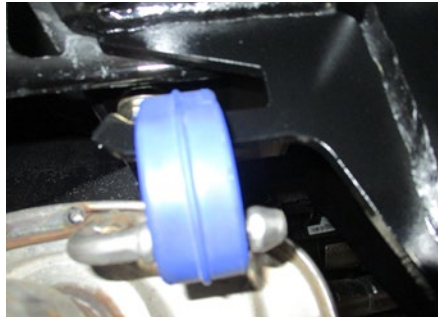
Step 8

Using the diagram as a reference, mark and trim the underbody panel that was removed during step 3. Reinstall the panel.



Step 9

Raise the exhaust back into position and reattach the three rubber hangers. The rearward most rubber hanger will be secured to the post on the hitch.



Step 10

Return the left over hardware and bracket to the vehicle owner.



Final Installed Image

